

REINFORCING BARS SCHEDULE					
TYPE	QUANTITY PER INLET	DIMENSIONS		SIZE	APPROX. WT. OF BARS IN INLET
		A	B		
A	2	3'-4"	2'-4"	#5	16.7

**INLET NOTES**

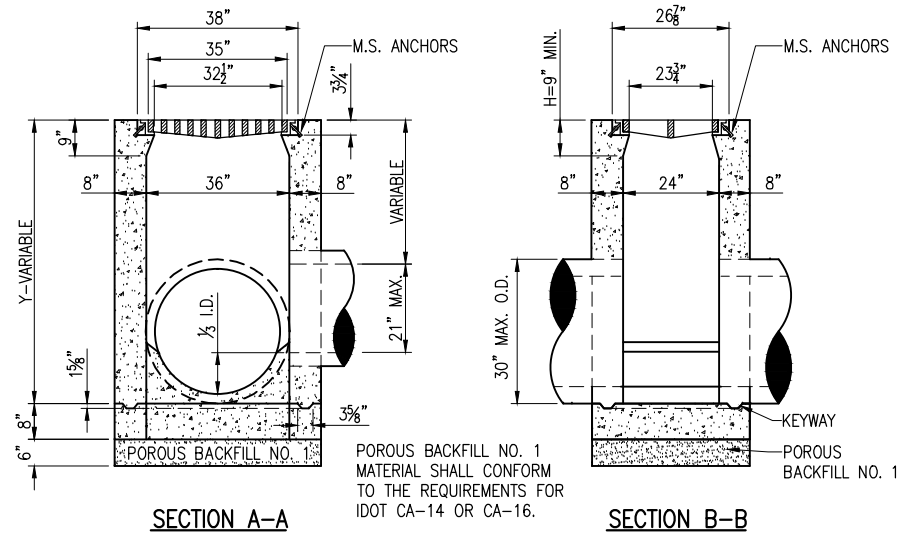
INLET TO BE CONSTRUCTED OF STRUCTURAL P.C. CONCRETE. THE CONTRACT UNIT PRICE PER INLET SHALL INCLUDE THE FRAME, GRATE AND STEPS IN PLACE AND COMPLETE PER UNIT.

1/2" CHAMFER TO BE USED ON ALL EXPOSED CORNERS OF INLETS. BARS TO BE INSTALLED 2" FROM FACE OF WALLS.

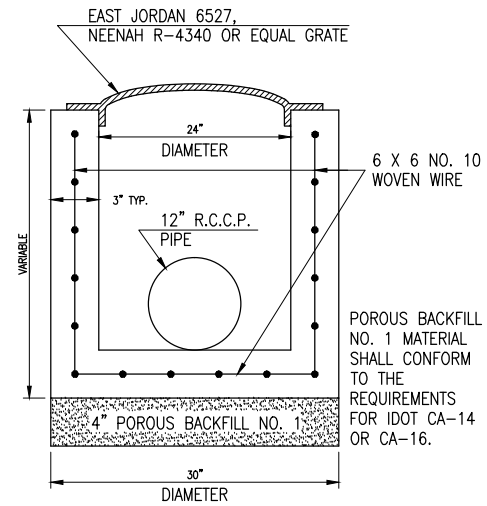
THE FRAME AND GRATE SHALL BE NEENAH R-3475-A, DEETER 2425-E.

"H" SHALL BE EQUAL TO THE PROPOSED PAVEMENT THICKNESS AND NOT LESS THAN THE ATTACHED MINIMUMS. TYPE A \_\_\_\_\_ 9" MINIMUM.

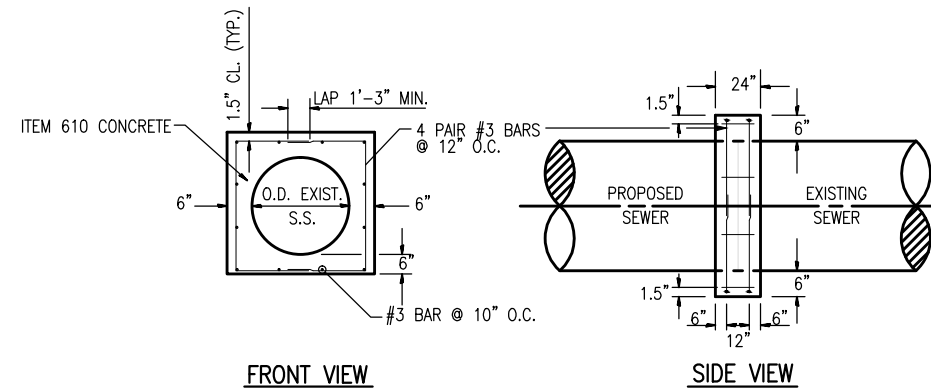
INLET STEPS SHALL BE NEENAH R-1980-1. 12" TO 15" C.C. STEPS TO BE INSTALLED WHEN Y IS GREATER THAN 5' COST. THE COST OF THE STEPS SHALL BE INCLUDED IN THE CONTRACT UNIT PRICE FOR EACH INLET.



**TYPE A INLET**



**TYPE D INLET**  
IDOT STANDARD 1538-6



**CONNECTION NOTES:**

PIPE CONNECTION DETAIL, IF REQUIRED FOR CONSTRUCTION.

ALL WORK AND MATERIAL REQUIRED FOR CONNECTION TO EXISTING STORM SEWER OR STRUCTURES SHALL BE INCIDENTAL.

**CONCRETE COLLAR FOR SEWER CONNECTION**

DATE	REVISION	BY

**JOLIET REGIONAL AIRPORT  
JOLIET PARK DISTRICT  
JOLIET, ILLINOIS**

IL. PROJ.: JOT-4043 A.I.P. PROJ.: 3-17-0056-B6

Hanson Project No. 09A0152D_0001	FILENAME: C-501-DRN.DWG	DATE: 5/14/12
Scale: NOT TO SCALE	LAYOUT: KBS	DRAWN: KBS
DATE: 5/14/12	REVIEWED: RAW	DATE: 4/20/12

Hanson Professional Services Inc.  
1525 South Sixth Street  
Springfield, Illinois 62766  
Offices Nationwide

REHAB RUNWAY 13-31, REPLACE APRON, CONSTRUCT TAXIWAY A1

**DRAINAGE AND EROSION CONTROL DETAILS**