

06-15-2018 LETTING ITEM 030

STATE OF ILLINOIS  
DEPARTMENT OF TRANSPORTATION

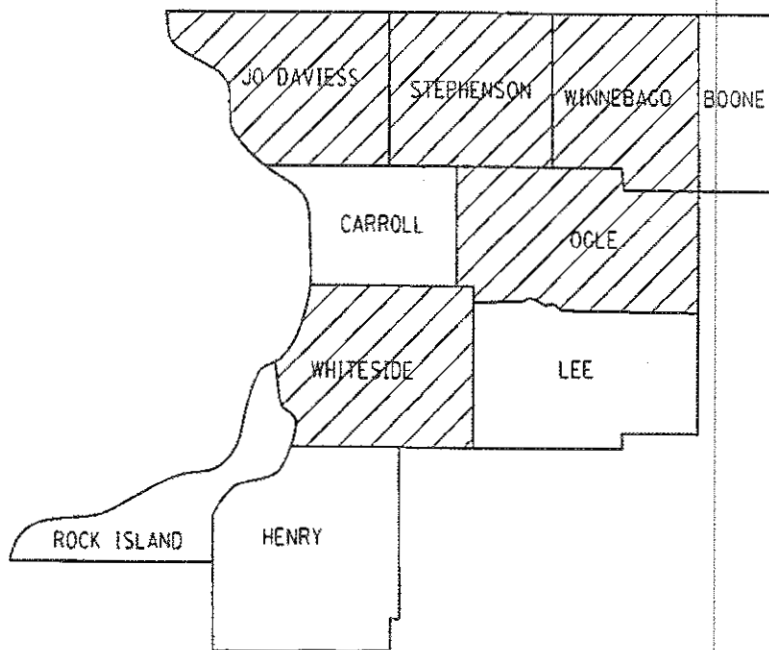
F.A. STATE	SECTION	COUNTY	TOTAL SHEETS	SHEET NO.
VAR.	D2 BC 2018-2	VARIOUS	9	1
ILLINOIS			CONTRACT NO. 64M67	

FOR INDEX OF SHEETS, SEE SHEET NO. 2  
FOR STATE STANDARDS, SEE SHEET NO. 2

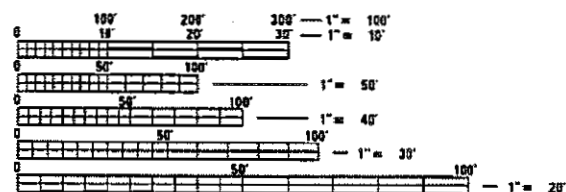
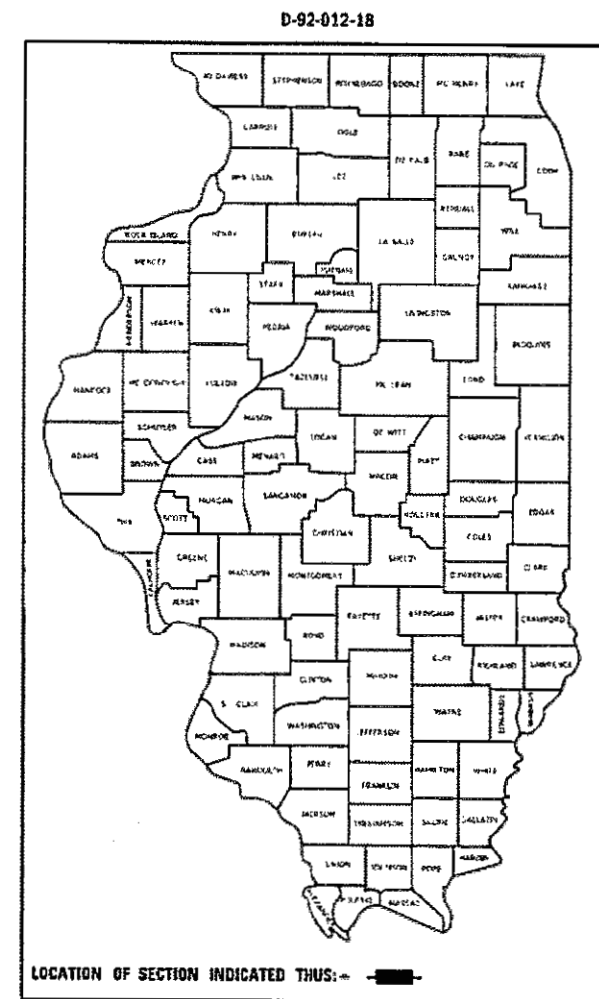
# PROPOSED HIGHWAY PLANS

VARIOUS ROUTES  
SECTION D2 BC 2018-2  
TYPE of IMPROVEMENT  
VARIOUS COUNTIES

C-92-016-18



LOCATION OF SECTION INDICATED THIS:



FULL SIZE PLANS HAVE BEEN PREPARED USING STANDARD ENGINEERING SCALES. REDUCED SIZED PLANS WILL NOT CONFORM TO STANDARD SCALES. IN MAKING MEASUREMENTS ON REDUCED PLANS, THE ABOVE SCALES MAY BE USED.

J.U.L.I.E.  
JOINT UTILITY LOCATION INFORMATION FOR EXCAVATION  
1-800-892-0123  
OR 811

PROJECT ENGINEER: DAVID DOSS (815) 284-5416  
PROJECT MANAGER: MAHMOUD ETEMADI (815) 284-5393

CONTRACT NO. 64M67

STATE OF ILLINOIS  
DEPARTMENT OF TRANSPORTATION

SUBMITTED March 13, 2018

Maubel  
REGIONAL ENGINEER

May 11, 2018  
ENGINEER OF DESIGN AND ENVIRONMENT

May 10, 2018  
DIRECTOR OF HIGHWAYS PROJECT IMPLEMENTATION 3

PRINTED BY THE AUTHORITY  
OF THE STATE OF ILLINOIS

# INDEX OF SHEETS

- 1 COVER SHEET
- 2 INDEX OF SHEETS & STATE STANDARDS
- 3 SUMMARY OF QUANTITIES
- 4 SCHEDULE OF QUANTITIES
- 5 LOCATION MAP JO DAVIESS COUNTY
- 6 LOCATION MAP OGLE COUNTY
- 7 LOCATION MAP STEPHENSON COUNTY
- 8 LOCATION MAP WHITESIDE COUNTY
- 9 LOCATION MAP WINNEBAGO COUNTY

# STATE STANDARDS

- 701006-05 OFF-ROAD OPERATIONS, 2L, 2W, 15'(4.5m) TO 24" (600mm) FROM PAVEMENT EDGE
- 701101-05 OFF-ROAD OPERATIONS, MULTILANE, 15'(4.5m) TO 24"(600mm) FROM PAVEMENT EDGE
- 701201-04 LANE CLOSURE, 2L, 2W, DAY ONLY, FOR SPEEDS, > 45 MPH
- 701301-04 LANE CLOSURE, 2L, 2W, SHORT TIME OPERATIONS
- 701400-09 APPROACH TO LANE CLOSURE, FREEWAY/EXPRESSWAY
- 701406-11 LANE CLOSURE, FREEWAY/EXPRESSWAY, DAY OPERATIONS ONLY
- 701501-06 URBAN LANE CLOSURE, 2L, 2W, UNDIVIDED
- 701601-09 URBAN LANE CLOSURE, MULTILANE, 1W OR 2W WITH NONTRAVERSABLE MEDIAN
- 701801-06 SIDEWALK, CORNER OR CROSSWALK CLOSURE
- 701901-07 TRAFFIC CONTROL DEVICES
- 720011-01 METAL POSTS FOR SIGNS, MARKERS AND DELINEATORS
- 728001-01 TELESCOPING STEEL SIGN SUPPORT
- 729001-01 APPLICATIONS OF TYPES A & B METAL POSTS (FOR SIGNS & MARKERS)

MODEL: Default  
 FILE NAME: \\s:\libra\BID\NTEG\Illinois.gov\PWIDOT\Documents\MDOT\_Offices\District 2\Projects\Operations\Bridges\_Section\Bridges\_Contracts\2018\64M67\_Bridge\_Washing\_Various\_Locations\_ID\_structures\CADD\2018\64M67-sht-cover.dgn

USER NAME = d0ssid	DESIGNED - _____	REVISED - _____
	DRAWN - _____	REVISED - _____
PLOT SCALE = 100.0000' / in.	CHECKED - _____	REVISED - _____
PLOT DATE = Mar-13-2018 11:15:25 AM	DATE - _____	REVISED - _____

**STATE OF ILLINOIS  
DEPARTMENT OF TRANSPORTATION**

**INDEX OF SHEETS &  
STATE STANDARDS**

SCALE: \_\_\_\_\_ SHEET \_\_\_\_\_ OF \_\_\_\_\_ SHEETS STA. \_\_\_\_\_ TO STA. \_\_\_\_\_

F.A. RTE.	SECTION	COUNTY	TOTAL SHEETS	SHEET NO.
VAR.	D2 BC 2018-2	VARIOUS	9	2
CONTRACT NO. 64M67				
ILLINOIS   FED. AID PROJECT				

# SUMMARY OF QUANTITIES

Paycode	Description	Units	Quantity		Total
			0047		
			State Funds		
			Urban	Rural	
59200101	BRIDGE WASHING NO. 1	EACH		1	1
59200102	BRIDGE WASHING NO. 2	EACH	1		1
59200103	BRIDGE WASHING NO. 3	EACH		1	1
59200104	BRIDGE WASHING NO. 4	EACH		1	1
59200105	BRIDGE WASHING NO. 5	EACH		1	1
59200106	BRIDGE WASHING NO. 6	EACH		1	1
59200107	BRIDGE WASHING NO. 7	EACH	1		1
59200108	BRIDGE WASHING NO. 8	EACH	1		1
59200109	BRIDGE WASHING NO. 9	EACH		1	1
59200110	BRIDGE WASHING NO. 10	EACH	1		1
67100100	MOBILIZATION	L SUM	0.40	0.60	1
70102620	TRAFFIC CONTROL AND PROTECTION, STANDARD 701501	L SUM	.75	.25	1
70100450	TRAFFIC CONTROL AND PROTECTION, STANDARD 701201	L SUM		1	1
70100700	TRAFFIC CONTROL AND PROTECTION, STANDARD 701406	L SUM		1	1
70102630	TRAFFIC CONTROL AND PROTECTION, STANDARD 701601	L SUM	1		1
70102640	TRAFFIC CONTROL AND PROTECTION, STANDARD 701801	L SUM	.80	.20	1
Z0048665	RAILROAD PROTECTIVE LIABILITY INSURANCE	L SUM		1	1

17

MODEL: Defaul  
 FILE NAME: G:\11084\BID\NTEC\_11084\p\FWID\DOT\Documents\DOT\_Offices\District\_2\Projects\Operations\Bridges\Section\Bridges\_Washing\_Contracts\211846467\_Bridge\_Washing\_Various\_Locations\_ID\_structures\CA0702\_64467\_311-cover.dgn

# SCHEDULE OF QUANTITIES

Pay Item	Location	SN	Facility Carried	Feature Crossed	Bridge Location	Traffic Control Standard					
						701201	701400	701406	701501	701601	701801
BRIDGE WASHING NO.1	1	0430043	US 20 AND IL 84	GALENA RIV AND ICGRR	IN GALENA				X		X
BRIDGE WASHING NO.2	2	0710040	ILL 72	ROCK RIVER	S. EDGE OF BYRON				X		X
BRIDGE WASHING NO.3	3	0890042	US ROUTE 20 EB	PECATONICA RIVER	NE OF FREEPORT		X	X			
BRIDGE WASHING NO.4		0890081	US ROUTE 20 WB	PECATONICA RIVER	NE OF FREEPORT		X	X			
BRIDGE WASHING NO.5	4	0890045	US ROUTE 20 EB	PECATONICA RIVER	2.5 MI W OF IL 26		X	X			
BRIDGE WASHING NO.6		0890082	US ROUTE 20 WB	PECATONICA RIVER	2.5 MI W OF IL 26		X	X			
BRIDGE WASHING NO.7	5	0980051	AVE "G"	N BR ROCK RIVER	IN STERLING				X		X
BRIDGE WASHING NO.8		0980052	AVE "G"	S BR ROCK RIVER	IN STERLING				X		X
BRIDGE WASHING NO.9	6	0980100	IL 78	ROCK RIVER	N EDGE PROPHETSTOWN	X					
BRIDGE WASHING NO.10	7	1016133	CHESTNUT ST	ROCK RIVER	0.1 MI E OF MAIN ST					X	X

MODEL: Default  
 FILE NAME: p:\u\0466610\DOT Documents\DOT - Offices\District 2\Projects\Operations\Bridges System\Bridges Washing Contracts\2018\64M67 Bridge Washing Various Locations (10 structures)\CAD\07-64M67-sh-covers.dgn

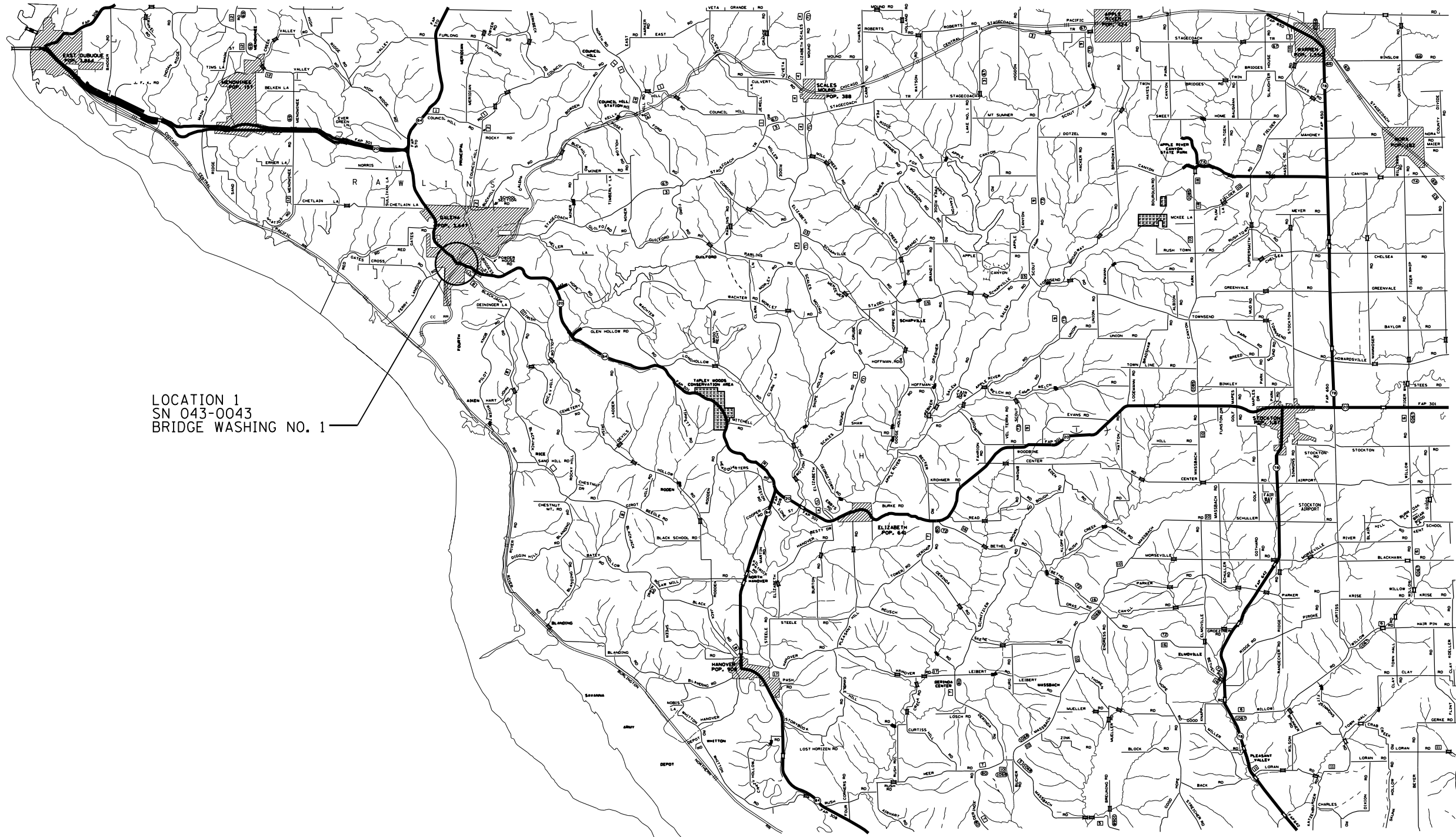
USER NAME = dossed	DESIGNED - _____	REVISED - _____
	DRAWN - _____	REVISED - _____
PLOT SCALE = 100.0000' / in.	CHECKED - _____	REVISED - _____
PLOT DATE = May-21-2018 10:26:02 AM	DATE - _____	REVISED - _____

**STATE OF ILLINOIS**  
**DEPARTMENT OF TRANSPORTATION**

<b>SCHEDULE OF QUANTITIES</b>	
SCALE: _____	SHEET _____ OF _____ SHEETS STA. _____ TO STA. _____

F.A. RTE.	SECTION	COUNTY	TOTAL SHEETS	SHEET NO.
VAR.	D2 BC 2018-2	VARIOUS	9	4
CONTRACT NO. 64M67				
ILLINOIS FED. AID PROJECT				

# JO DAVIESS COUNTY



LOCATION 1  
SN 043-0043  
BRIDGE WASHING NO. 1

MODEL: Default  
 FILE NAME: P:\IL\B&E\IDNT\EC\Illinois\gov\PWD\DOT\Documents\DOT\_Offices\District 2\Projects\Operations\Bridges\_Section\Bridges\_Washing\_Various Locations (10\_structures)\CADD\02-64M67-sh-cover.dgn

USER NAME = dossed	DESIGNED - _____	REVISED - _____
	DRAWN - _____	REVISED - _____
PLOT SCALE = 100,000' / in.	CHECKED - _____	REVISED - _____
PLOT DATE = Feb-26-2018 02:08:11 PM	DATE - _____	REVISED - _____

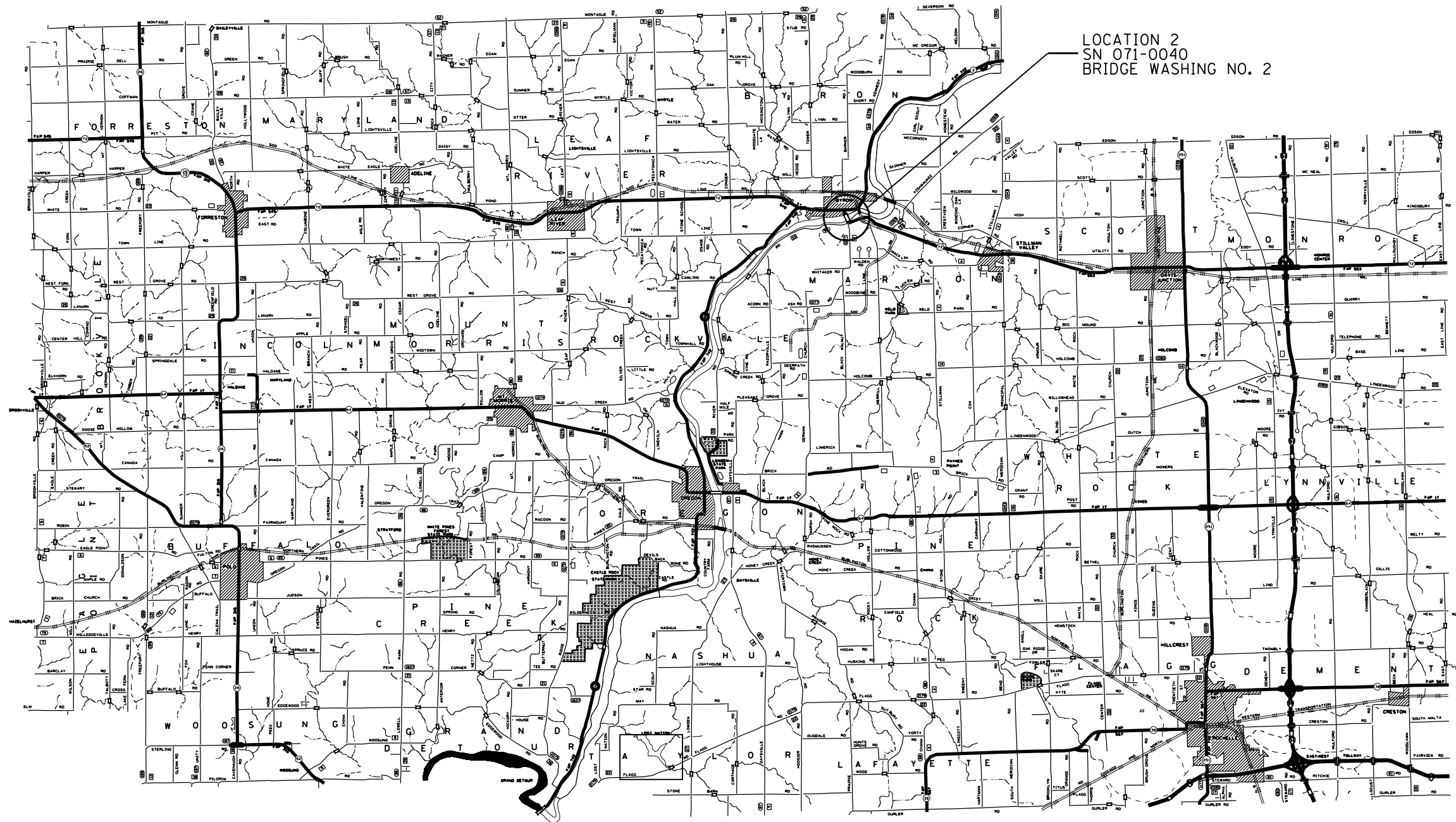
**STATE OF ILLINOIS  
DEPARTMENT OF TRANSPORTATION**

**JO DAVIESS COUNTY  
LOCATION MAP**

SCALE: \_\_\_\_\_ SHEET \_\_\_\_\_ OF \_\_\_\_\_ SHEETS STA. \_\_\_\_\_ TO STA. \_\_\_\_\_

F.A. RTE.	SECTION	COUNTY	TOTAL SHEETS	SHEET NO.
VAR.	D2 BC 2018-2	VARIOUS	9	5
			CONTRACT NO. 64M67	
		ILLINOIS FED. AID PROJECT		

# OGLE COUNTY



LOCATION 2  
SN 071-0040  
BRIDGE WASHING NO. 2

MODEL: Default  
 FILE: \\mhc\p\ul\B&E\ID\ITC\Illinois\poc\RW\DOT\Documents\DOT - Offices\District 2\Projects\Operations\Bridges - Section\Bridges - Washings - Contracts\3019\64M67 - Bridge - Washings - Various Locations (10 - Structures)\CADD\02-24\64M67-sh-covers.dgn

USER NAME = dossdd	DESIGNED - _____	REVISED - _____
	DRAWN - _____	REVISED - _____
PLOT SCALE = 100,0000' / in.	CHECKED - _____	REVISED - _____
PLOT DATE = Feb-26-2018 02:08:19 PM	DATE - _____	REVISED - _____

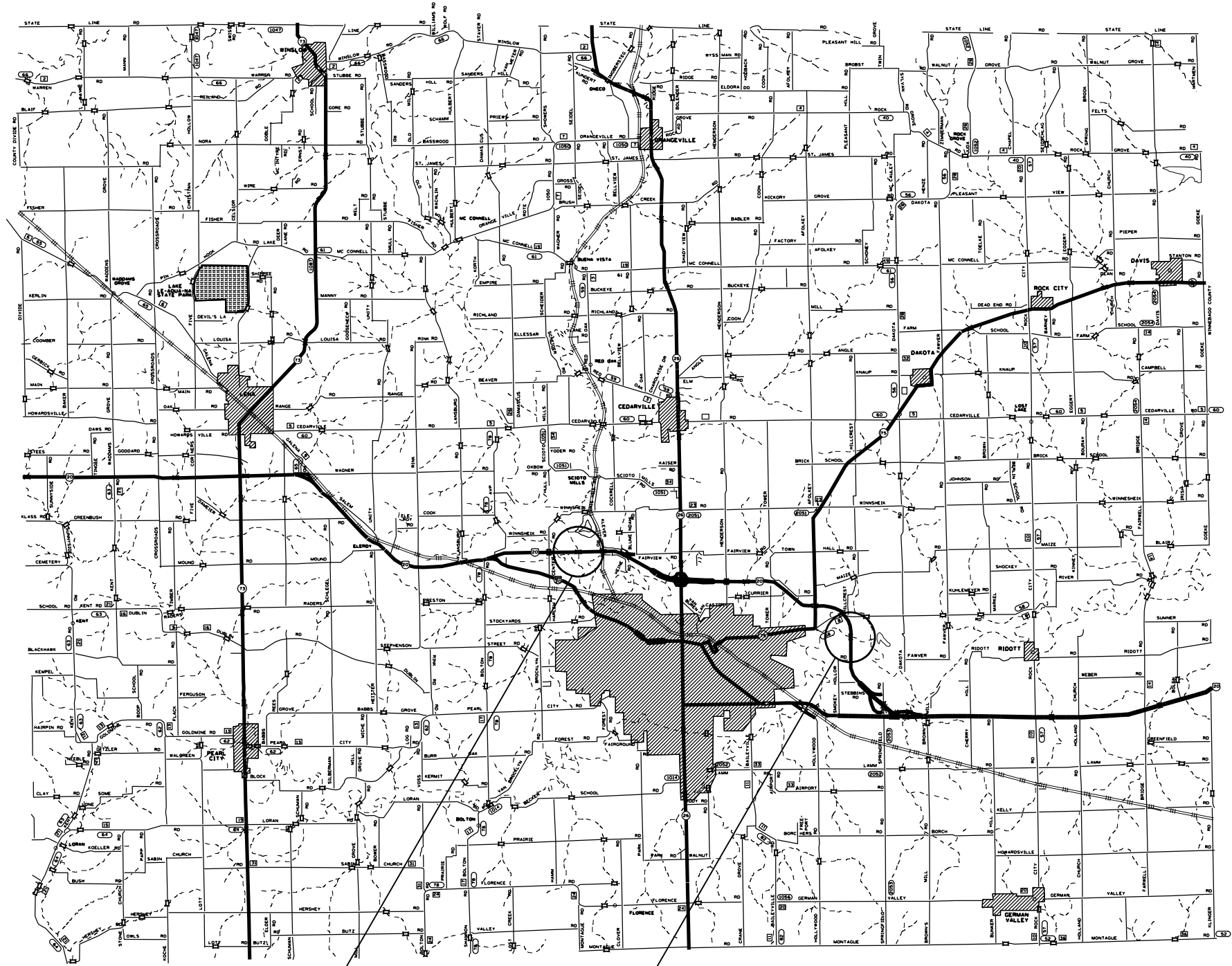
**STATE OF ILLINOIS  
DEPARTMENT OF TRANSPORTATION**

**OGLE COUNTY  
LOCATION MAP**

SCALE: \_\_\_\_\_ SHEET \_\_\_\_\_ OF \_\_\_\_\_ SHEETS STA. \_\_\_\_\_ TO STA. \_\_\_\_\_

F.A. RTE.	SECTION	COUNTY	TOTAL SHEETS	SHEET NO.
VAR.	D2 BC 2018-2	VARIOUS	9	6
			CONTRACT NO. 64M67	
ILLINOIS FED. AID PROJECT				

# STEPHENSON COUNTY



LOCATION 4  
 SN 089-0045 BRIDGE WASHING NO. 5  
 SN 089-0082 BRIDGE WASHING NO. 6

LOCATION 3  
 SN 089-0081 BRIDGE WASHING NO. 4  
 SN 089-0042 BRIDGE WASHING NO. 3

MODEL: Default  
 FILE: A:\mfc\_p\110848EID\NITEC\Illinois\poc\RW\DOT\Documents\DOT\_Offices\District 2\Projects\Operations\Bridges\_Section\Bridges\_Washing\_Contract\301864M67\_Bridges\_Washing\_Valleys\_Locations\110\_structures\CAADD\02-64M67-shr-cover.dgn

USER NAME = dossed	DESIGNED - _____	REVISED - _____
	DRAWN - _____	REVISED - _____
PLOT SCALE = 100,0000' / in.	CHECKED - _____	REVISED - _____
PLOT DATE = Feb-26-2018 02:08:28 PM	DATE - _____	REVISED - _____

**STATE OF ILLINOIS  
 DEPARTMENT OF TRANSPORTATION**

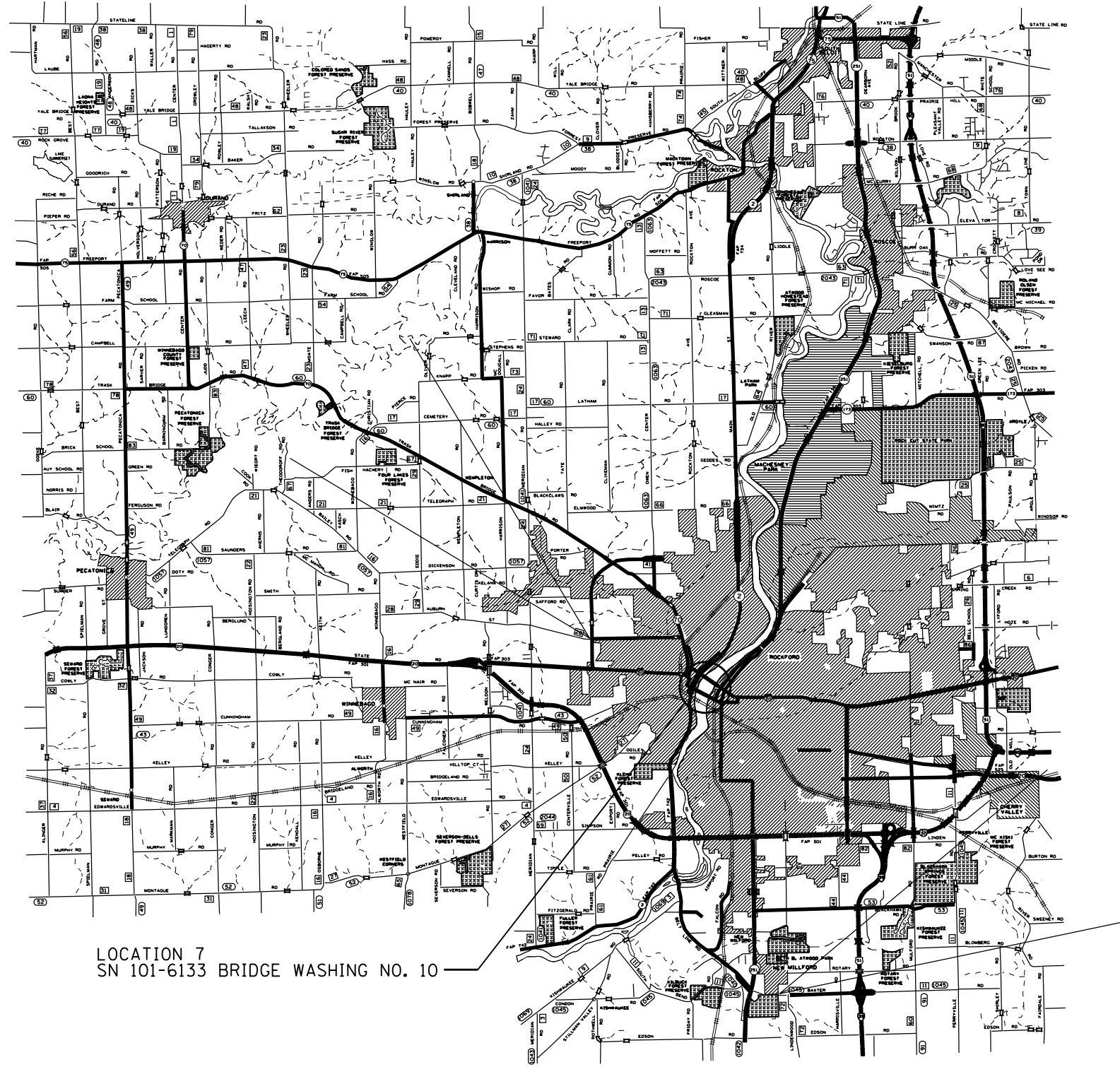
<b>STEPHENSON COUNTY LOCATION MAP</b>	
SCALE: _____	SHEET _____ OF _____ SHEETS STA. _____ TO STA. _____

F.A. RTE.	SECTION	COUNTY	TOTAL SHEETS	SHEET NO.
VAR.	D2 BC 2018-2	VARIOUS	9	7
CONTRACT NO. 64M67				
ILLINOIS FED. AID PROJECT				





# WINNEBAGO COUNTY



LOCATION 7  
SN 101-6133 BRIDGE WASHING NO. 10

MODEL: Default  
 FILE: \\nas01c:\pub\lba\ED\INT\EG\_IL\work\proj\WID\DOT\Documents\DOT\_Offices\District 2\Projects\Operations\Bridges\_Section\Bridges\_Washing\_Various\_Locations (10\_structures)\CADD\02-64M67-shr-cover.dgn

USER NAME = dossed	DESIGNED - _____	REVISED - _____
	DRAWN - _____	REVISED - _____
PLOT SCALE = 100,000' / in.	CHECKED - _____	REVISED - _____
PLOT DATE = Feb-26-2018 02:08:43 PM	DATE - _____	REVISED - _____

**STATE OF ILLINOIS  
DEPARTMENT OF TRANSPORTATION**

<b>WINNEBAGO COUNTY LOCATION MAP</b>	
SCALE: _____	SHEET _____ OF _____ SHEETS
STA. _____	TO STA. _____

F.A. RTE.	SECTION	COUNTY	TOTAL SHEETS	SHEET NO.
VAR.	D2 BC 2018-2	VARIOUS	9	9
			CONTRACT NO. 64M67	
ILLINOIS FED. AID PROJECT				