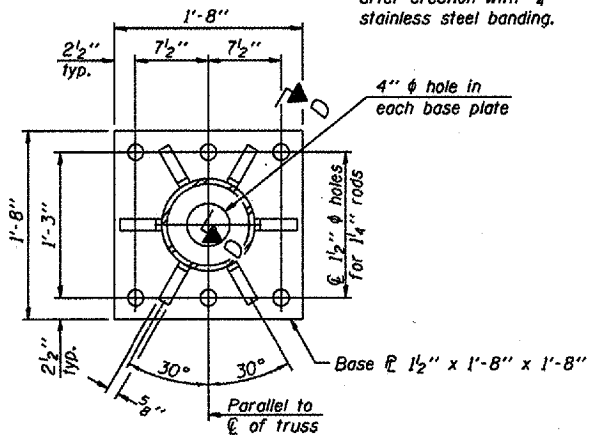
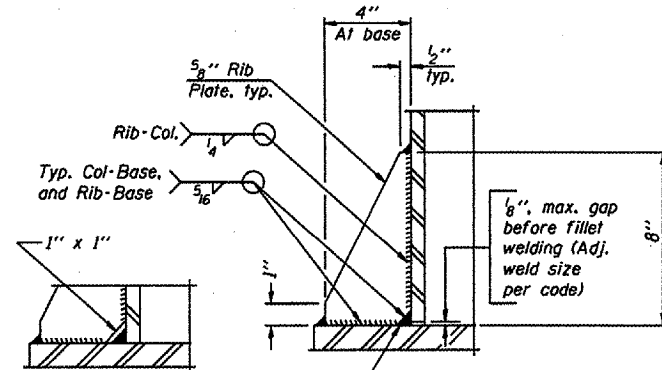


DETAIL B

Ribs shall be cut to fit slope of pipe.

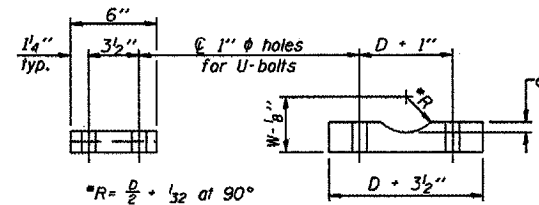


SECTION B-B



\*\* Alternate detail if welding col. to base plate first, then snip inside corner of ribs. Terminate weld on rib 1/4" from snip.

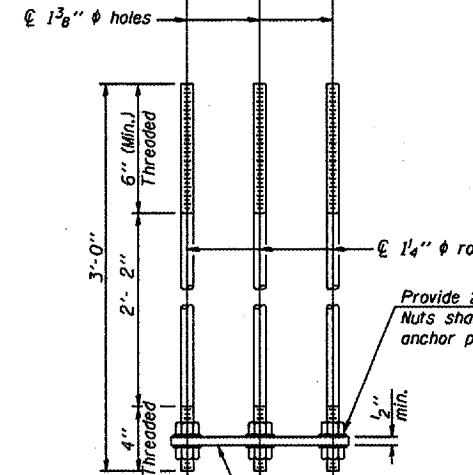
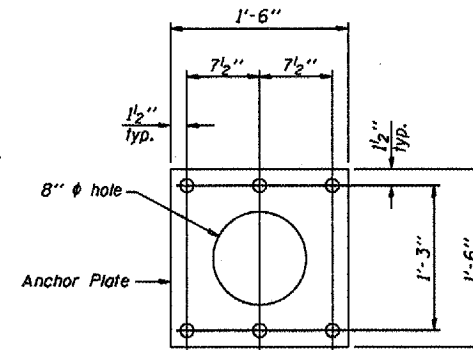
SECTION D-D



SADDLE SHIM DETAIL

ASTM B26 Alloy 356-F  
or  
ASTM B209 Alloy 6061-T651  
(4 required per sign truss)

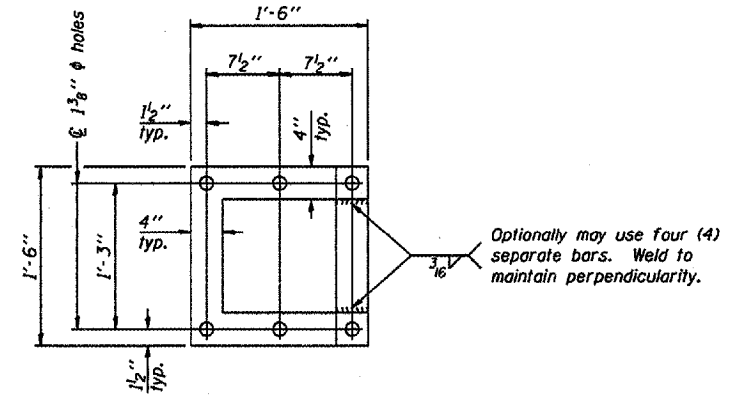
Truss Chord Nominal Dia.	a
5"	3/4"
5 1/2"	7/8"
6"	1"
6 1/2"	1 1/8"
7"	1 1/4"



ANCHOR ROD DETAIL

Anchor Rod Details apply to Structure No. 5S0921074R214.0 Only.

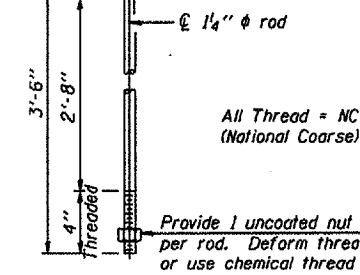
Anchor rods shall conform to AASHTO M314 Grade 36 or 50 and meet Charpy V-Notch (CVN) energy of 15 lb.-ft. at 40° F. Galvanize upper 12" per AASHTO M232. No welding shall be permitted on rods.



POSITIONING PLATE(S)

At each location, provide 1/4" thick positioning plate(s) and six (6) additional nuts to be used with leveling nuts to maintain anchor bolts position during concrete placement.

1/4" plate and extra nuts become Contractor's property. Cost included in Drilled Shaft Concrete Foundations.



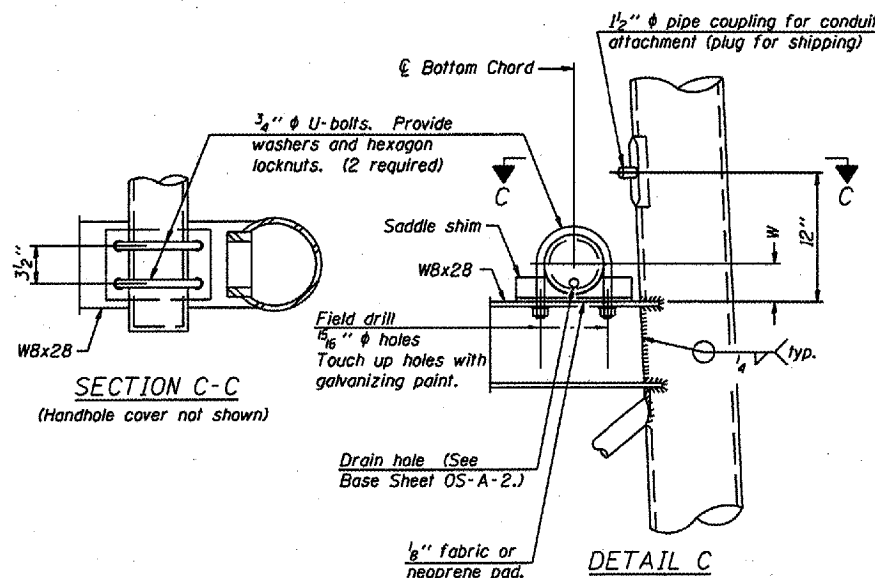
ANCHOR ROD DETAIL

Drilled Shaft Foundation

NUMBER	REVISION	DATE

DESIGNED		20
CHECKED		
DRAWN		
CHECKED		
EXAMINED		
PASSED		

OS-A-6A 1-7-05



SECTION C-C

(Handhole cover not shown)

10"  $\phi$  PIPE SUPPORT FRAME DETAILS

NOTES: Structure No. 5S0101074R178.7

1. New End Supports to be installed on existing concrete foundations with existing anchor bolts. Provide new anchor bolt nuts and washers as necessary.
2. The Contractor and the Engineer shall field verify the existing end support dimensions and the existing anchor bolt dimensions prior to fabrication of the new end supports.

OVERHEAD SIGN STRUCTURES  
SUPPORT FRAME DETAILS ALUMINUM TRUSS

District 5  
Overhead Sign Structure  
Repair and Replacement