

F.A.S. RTE.	SECTION	COUNTY	TOTAL SHEETS	SHEET NO.
2402	(113B-2)I	PEORIA	55	1

STATE OF ILLINOIS
DEPARTMENT OF TRANSPORTATION
DIVISION OF HIGHWAYS
**PROPOSED
HIGHWAY PLANS**

FAS ROUTE 2402 (US 150)
SECTION (113B-2)I
PROJECT BRS-2402(101)
PEORIA COUNTY
C-94-069-00

D94-058-00



INDEX OF SHEETS

- 1 COVER SHEET
- 2 GENERAL NOTES
- 3-5 SUMMARY OF QUANTITIES
- 6 TYPICAL SECTIONS
- 7-8 SCHEDULE OF QUANTITIES
- 9 REMOVAL ITEMS
- 10 PROPOSED PLAN AND PROFILE
- 11 STAGE CONSTRUCTION PLAN
- 12-22 STRUCTURE PLANS
- 23-26 BRIDGE APPROACH PAVEMENT (SPECIAL)
- 27-28 SHOULDER INLET DETAIL
- 29-31 SCOUR COUNTERMEASURE DETAILS
- 32-48 DISTRICT CADD STANDARDS
- 49-55 CROSS SECTIONS
HIGHWAY STANDARDS

LIST OF STANDARDS

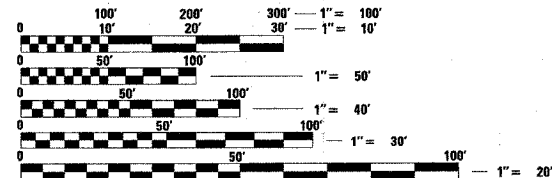
- 000001-04 635011-01
- 280001-02 701001-01
- 420401-05 701011-01
- 515001-02 701006-02
- 542301 701301-02
- 542401 701311-02
- 609001-02 701321-08
- 609006-02 701326-02
- 630001-06 702001-06
- 630301-03 704001-02
- 631031-05 780001-01
- 631032-02 781001-02
- 635006-02

DESIGN DESIGNATION

MAJOR COLLECTOR
(NON-URBAN)
ADT (2005) = 3650
PV = 3520
SU = 100
MU = 30

QC/QA BITUMINOUS
SUPERPAVE PROJECT

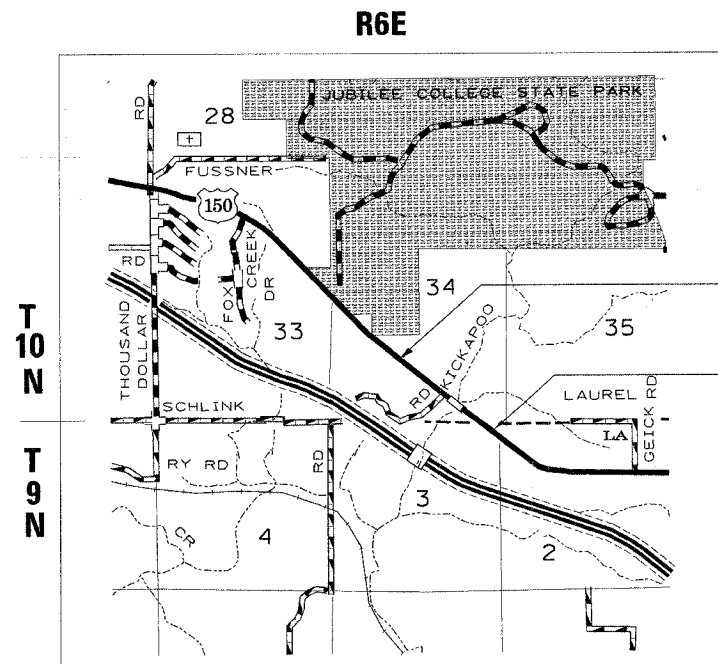
SCALES



FULL SIZE PLANS HAVE BEEN PREPARED USING STANDARD ENGINEERING SCALES. REDUCED SIZED PLANS WILL NOT CONFORM TO STANDARD SCALES. IN MAKING MEASUREMENTS ON REDUCED PLANS, THE ABOVE SCALES MAY BE USED.

J.U.L.I.E.
JOINT UTILITY LOCATION INFORMATION FOR EXCAVATION
1-800-892-0123

CONTRACT NO. 68072
CATALOG NO. 031898-04D



BEGIN PROJECT
STA. 308 + 00
END PROJECT
STA. 315 + 30

GROSS LENGTH OF IMPROVEMENT = 670.00 FEET = .127 MILES
NET LENGTH OF IMPROVEMENT = 670.00 FEET = .127 MILES

PROJECT ENGINEER: TOM LACY (309) 671-3453

DESIGN BY: NICHOLAS JACK (309) 671-3466

JOB DESCRIPTION

BRIDGE DECK REPLACEMENT OVER
KICKAPOO CREEK (SN 072-0033),
3 MILES WEST OF KICKAPOO

STATE OF ILLINOIS
DEPARTMENT OF TRANSPORTATION
DIVISION OF HIGHWAYS

SUBMITTED *March 31, 2006*

[Signature]
DISTRICT ENGINEER

May 12, 2006
Mike Hine
ENGINEER OF DESIGN AND ENVIRONMENT

May 12, 2006
Milton R. Sosa, P.E.
DIRECTOR, DIVISION OF HIGHWAYS

PRINTED BY THE AUTHORITY
OF THE STATE OF ILLINOIS