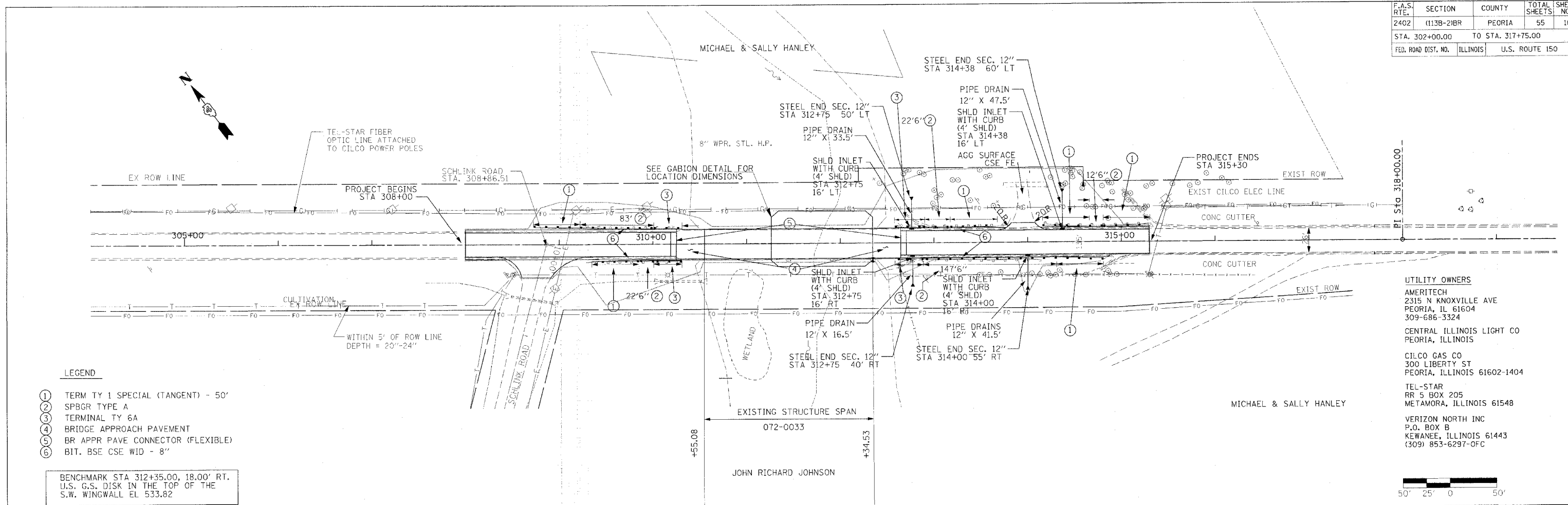


F.A.S. RTE.	SECTION	COUNTY	TOTAL SHEETS	SHEET NO.
2402	(113B-2)BR	PEORIA	55	10
STA. 302+00.00		TO STA. 317+75.00		
FED. ROAD DIST. NO.		ILLINOIS	U.S. ROUTE 150	

DATE	
BY	
REVISION	
NO. 1	DATE
NO. 2	DATE
NO. 3	DATE
NO. 4	DATE
NO. 5	DATE
NO. 6	DATE
NO. 7	DATE
NO. 8	DATE
NO. 9	DATE
NO. 10	DATE



- LEGEND**
- ① TERM TY 1 SPECIAL (TANGENT) - 50'
 - ② SPBGR TYPE A
 - ③ TERMINAL TY 6A
 - ④ BRIDGE APPROACH PAVEMENT
 - ⑤ BR APPR PAVE CONNECTOR (FLEXIBLE)
 - ⑥ BIT. BSE CSE WID - 8"

BENCHMARK STA 312+35.00, 18.00' RT.
U.S. G.S. DISK IN THE TOP OF THE
S.W. WINGWALL EL 533.82

- UTILITY OWNERS**
- AMERITECH
2315 N KNOXVILLE AVE
PEORIA, IL 61604
309-686-3324
 - CENTRAL ILLINOIS LIGHT CO
PEORIA, ILLINOIS
 - CILCO GAS CO
300 LIBERTY ST
PEORIA, ILLINOIS 61602-1404
 - TEL-STAR
RR 5 BOX 205
METAMORA, ILLINOIS 61548
 - VERIZON NORTH INC
P.O. BOX B
KEWANEE, ILLINOIS 61443
(309) 853-6297-0FC

STATION	305+00	306+00	307+00	308+00	309+00	310+00	311+00	312+00	313+00	314+00	315+00	316+00	317+00
535.60													
535.60													
535.65													
535.67													
535.72													
535.69													
535.75													
535.66													
535.74													
535.65													
535.75													
535.76													
535.61													
535.74													
535.59													
535.75													
535.58													
535.75													
535.64													
535.83													
535.84													
536.03													
535.95													
536.14													
536.12													
536.31													
536.16													
536.35													
536.18													
536.37													
536.25													
536.44													
536.38													
536.57													
536.58													
536.77													
536.87													
537.04													
537.24													
537.40													
537.64													
537.77													
538.08													
538.19													
538.64													
538.74													
539.22													
539.30													
539.88													
539.94													
540.57													
540.61													
541.38													
541.40													
542.32													
542.32													

PROPOSED PLAN