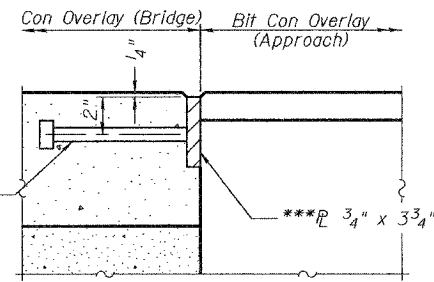


STATE OF ILLINOIS  
DEPARTMENT OF TRANSPORTATION

|                       |         |                   |           |             |
|-----------------------|---------|-------------------|-----------|-------------|
| ROUTE NO.             | SECTION | COUNTY            | SHEET NO. | SHEET NO. 5 |
|                       |         | Peoria            | 16        | 11 SHEETS   |
| FED. ROAD DIST. NO. 7 | BLINDS  | FED. AID PROJECT- |           |             |

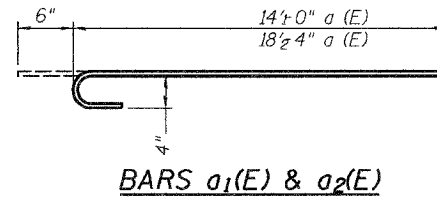
Contract Number: 68072

3/4" φ x 8" granular or solid flux filled headed studs conforming to Article 1006.32 of the Standard Specifications automatically end welded at 12" ctrs. (34 Req'd at each Abutment)

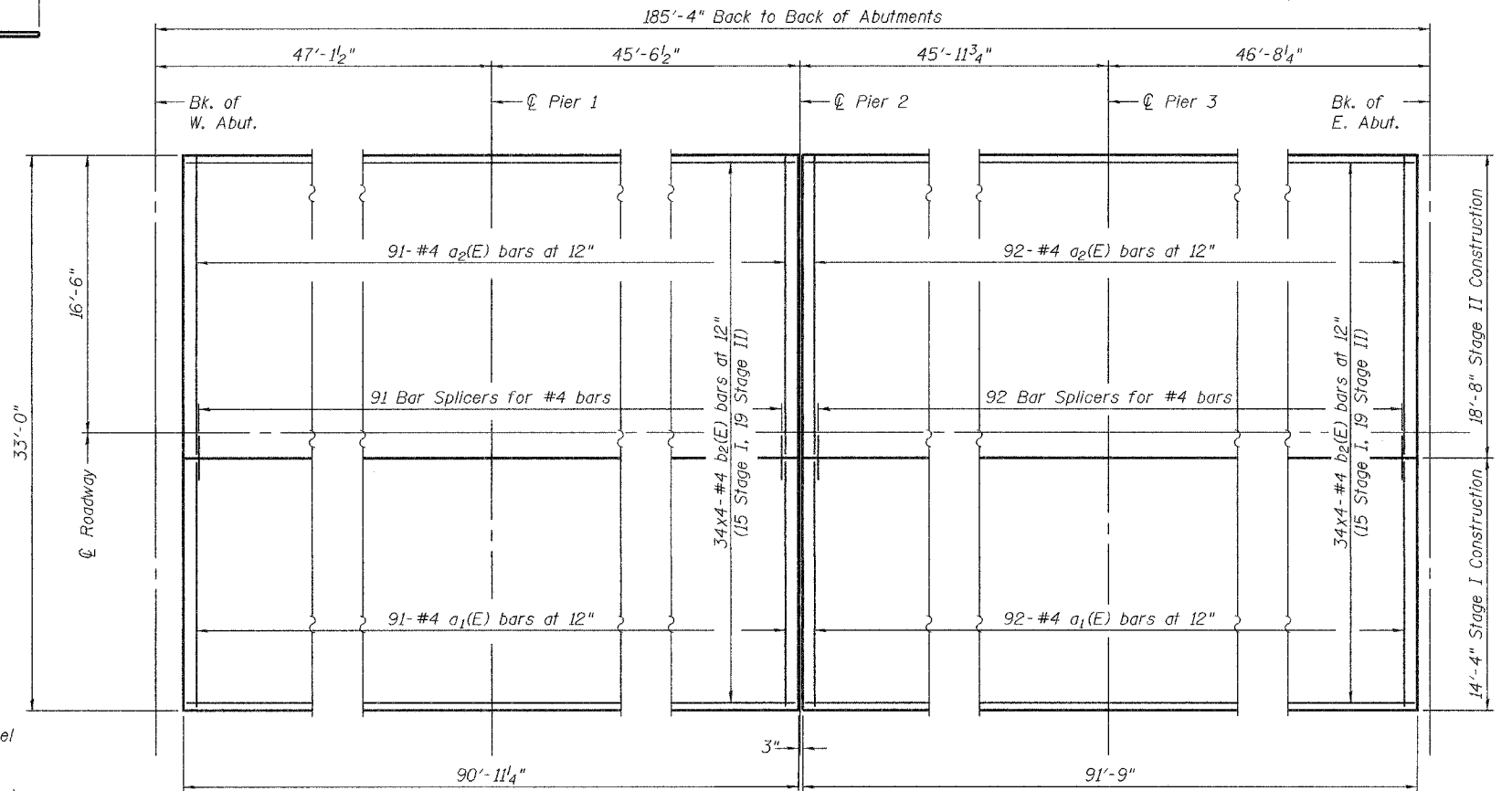


**DETAIL B**

\*\*\*After fabrication the assembly shall be galvanized according to AASHTO M111 and ASTM A385. Assembly shall not be painted. Seal space between plates with silicone sealant suitable for Structural Steel. Cost of is included with Furnishing and Erecting Structural Steel.

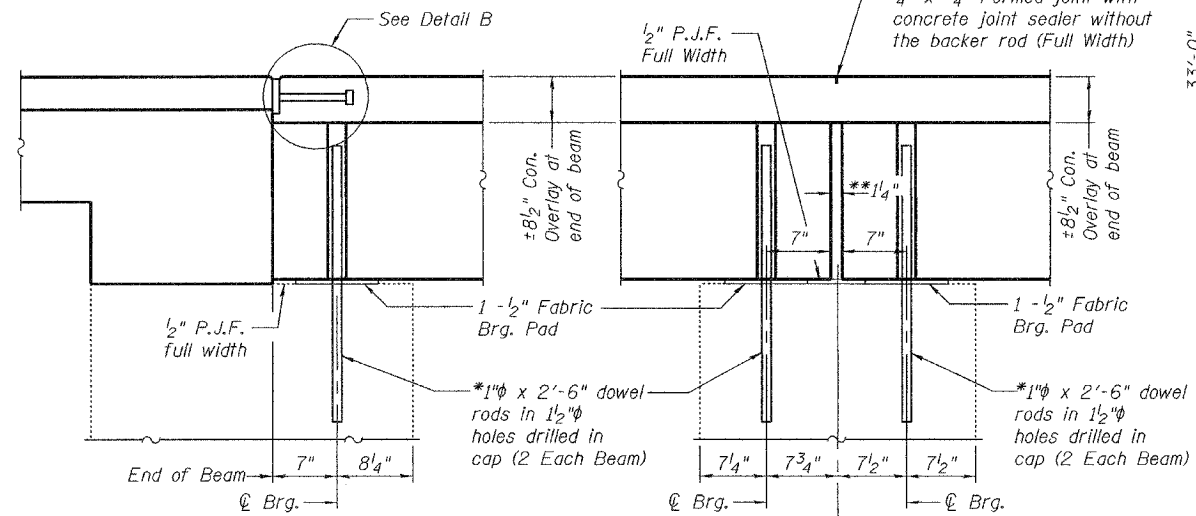


**BARS a<sub>1</sub>(E) & a<sub>2</sub>(E)**



**OVERLAY PLAN**

Note:  
Concrete wearing surface to be poured after grouting keys.



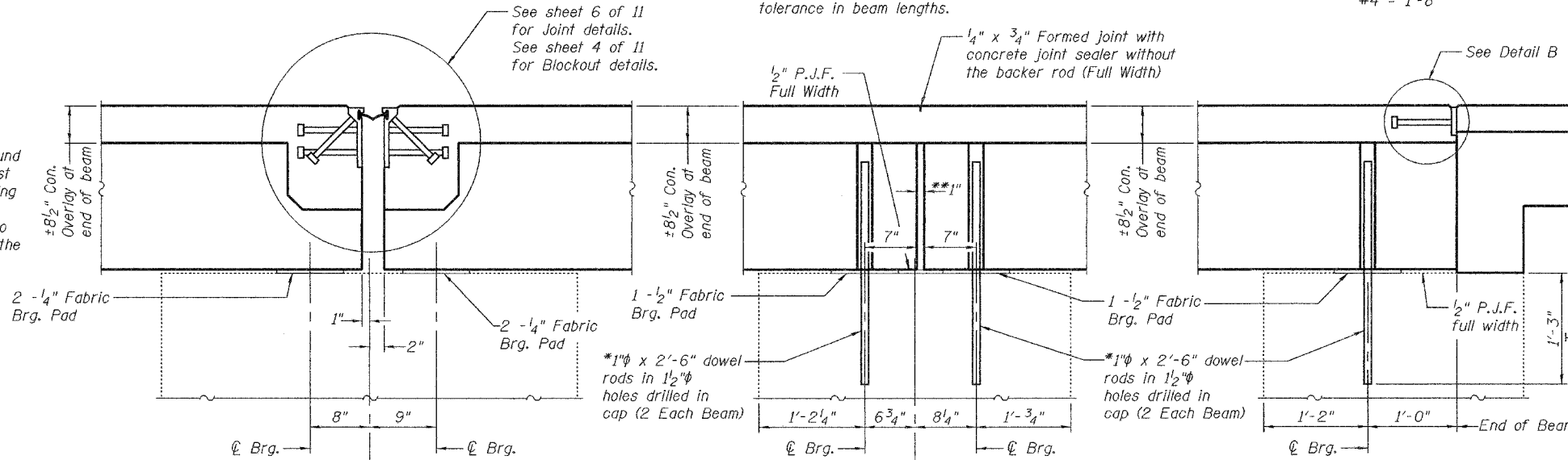
**TYPICAL WEST ABUTMENT SECTION**  
(Near  $\varnothing$  Roadway)

**TYPICAL PIER 1 SECTION**  
(Near  $\varnothing$  Roadway)

\*\*Joint shall be filled with non-shrink grout. Dimension may vary to accommodate tolerance in beam lengths.

**MIN. BAR LAP**  
#4 = 1'-8"

\*Existing Dowel Rods shall be cut off and ground flush with the top of the existing concrete. Cost to be Included in the cost of Removal of Existing Superstructures. New Dowel Rods shall be grouted after beams are in place and allowed to cure a minimum of 24 hours prior to grouting the shear keys.



**TYPICAL PIER 2 SECTION**  
(Near  $\varnothing$  Roadway)

**TYPICAL PIER 3 SECTION**  
(Near  $\varnothing$  Roadway)

**TYPICAL EAST ABUTMENT SECTION**  
(Near  $\varnothing$  Roadway)

**BILL OF MATERIAL**

| Bar                              | No.     | Size | Length  | Shape |
|----------------------------------|---------|------|---------|-------|
| a <sub>1</sub> (E)               | 183     | #4   | 14'-6"  | C     |
| a <sub>2</sub> (E)               | 183     | #4   | 18'-10" | C     |
| a <sub>3</sub> (E)               | 6       | #5   | 14'-0"  |       |
| a <sub>4</sub> (E)               | 6       | #5   | 18'-4"  |       |
| b <sub>2</sub> (E)               | 272     | #4   | 24'-3"  |       |
| Bar Splicers                     | Each    |      | 183     |       |
| Reinforcement Bars, Epoxy Coated | Pound   |      | 8,680   |       |
| Concrete Wearing Surface, 5"     | Sq. Yd. |      | 670     |       |

Reinforcement bars designated (E) shall be epoxy coated.  
Bars indicated thus 1 x 2-#5 etc. indicates 1 line of bars with 2 lengths per line.

**OVERLAY DETAILS AND TYPICAL SECTIONS**  
**US 50 / KICKAPOO CREEK**  
**PEORIA COUNTY**  
**SN 072-0033**

|          |                  |
|----------|------------------|
| DESIGNED | A.T.H.           |
| CHECKED  | S.J.B.           |
| DRAWN    | Drew Christopher |
| CHECKED  | A.T.H. S.J.B.    |

|                |                                    |
|----------------|------------------------------------|
| EXAMINED       | April 26, 2006                     |
| John A. Morris | ENGINEER OF STRUCTURAL SERVICES    |
| PASSED         | Ralph E. Anderson                  |
|                | ENGINEER OF BRIDGES AND STRUCTURES |