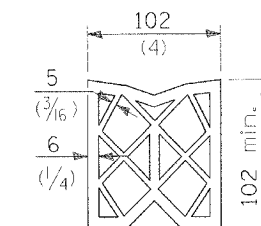
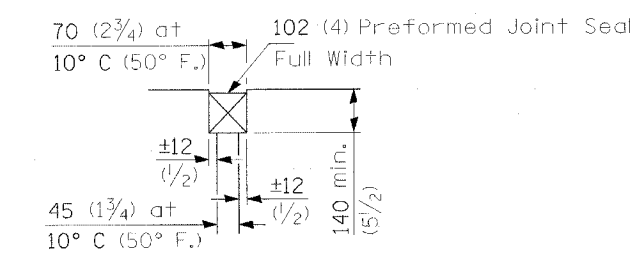


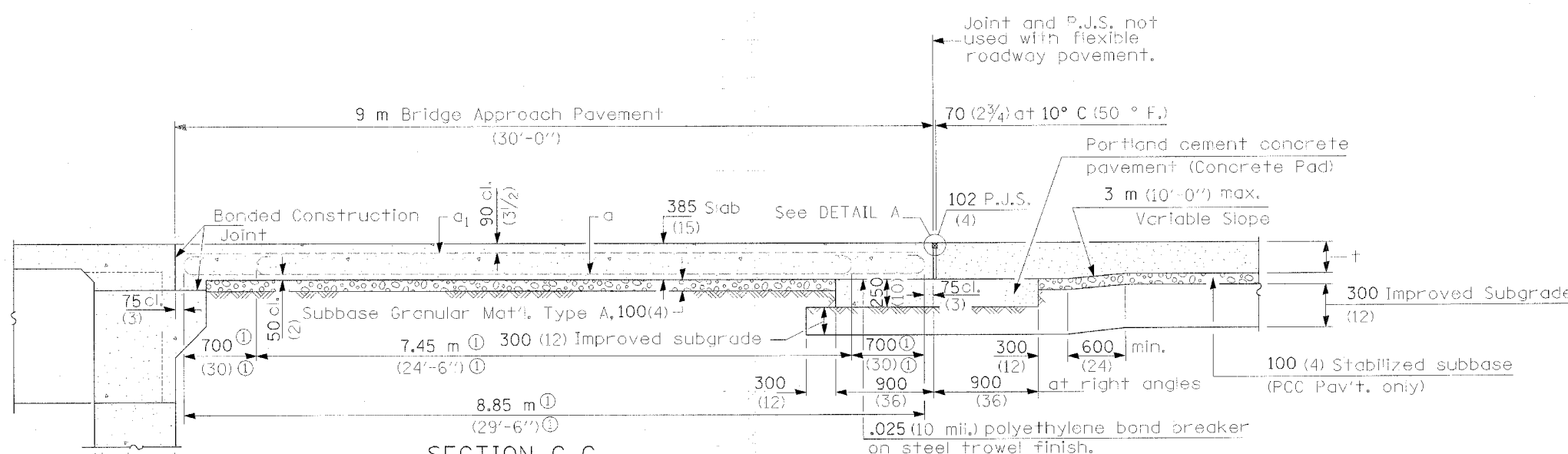
F.A.S. RTE.	SECTION	COUNTY	TOTAL SHEETS	SHEET NO.
2402	(113B-2)	PEORIA	55	25
STA.	TO STA.			
FED. ROAD DIST. NO.	ILLINOIS FED. AID PROJECT			



PREFORMED JOINT SEAL

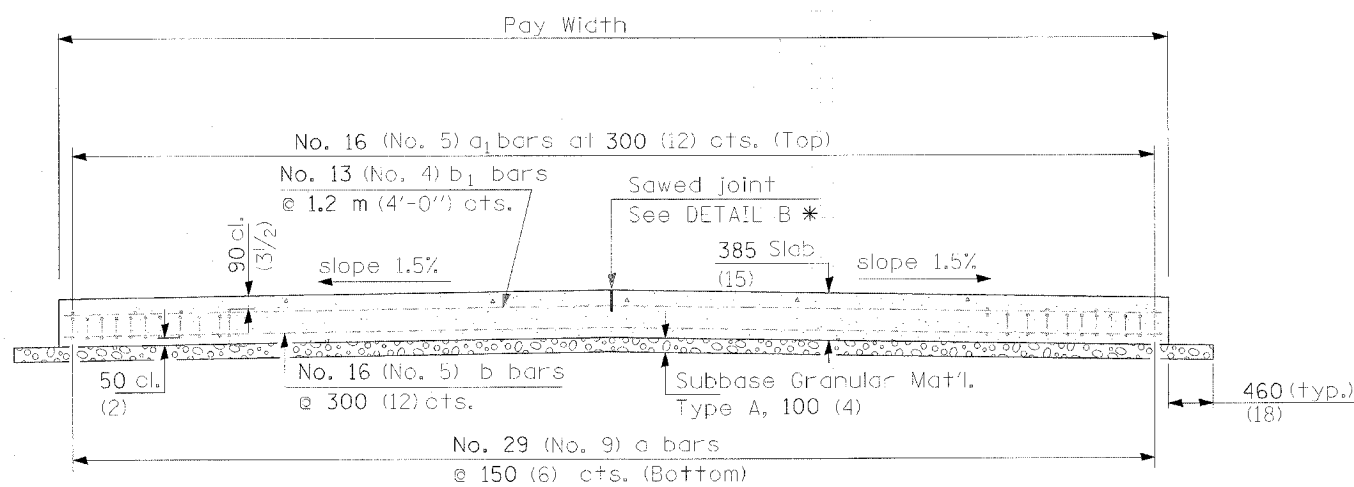


DETAIL A



SECTION C-C

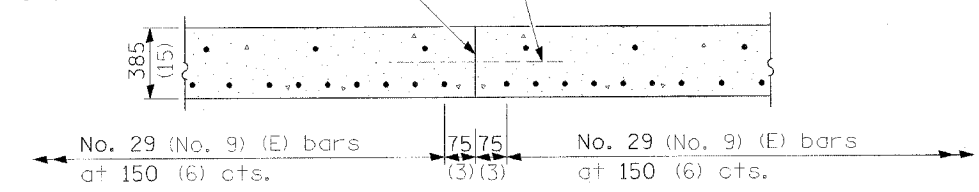
Ⓛ Stagger No. 29 (No. 9) a bars as shown on plan - full width



SECTION D-D

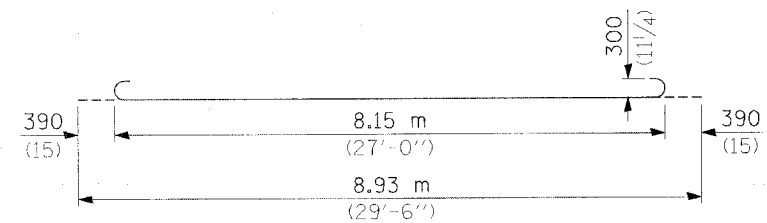
(See Plan for Dimensions not shown)  
All reinforcement bars shall be epoxy coated.

Longitudinal Construction Joint in accordance with details shown on Standard 420001.

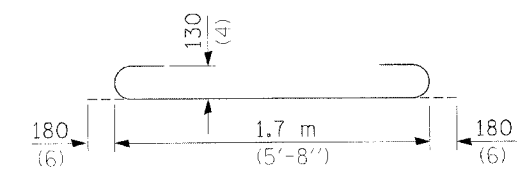


OPTIONAL LONGITUDINAL CONSTRUCTION JOINT

As approved by the Engineer, the Contractor may elect to reduce the widths of pour by use of the Optional Longitudinal Construction Joint shown. Joints shall be located at the edge of a traffic lane.

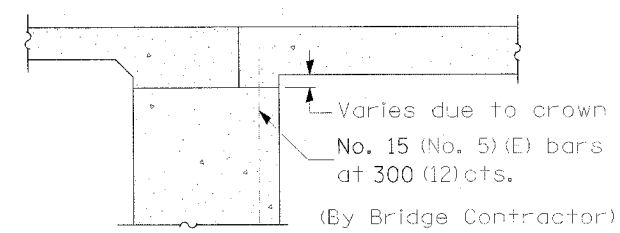


BAR a

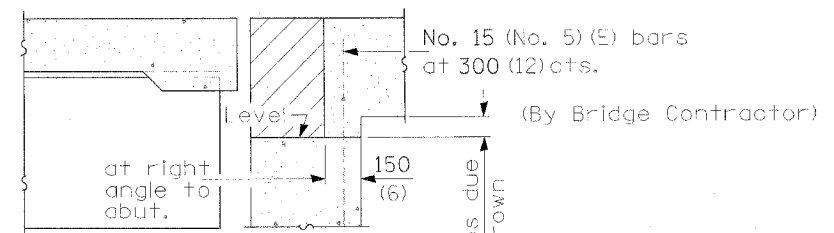


BAR a2

All dimensions are in millimeters (Inches) unless otherwise shown.



SECTION E-E (Integral Abutments)



SECTION E-E (Jointed Abutments)

DESIGN STRESSES  
 $f_y = 400 \text{ MPa (60,000 p.s.i.)}$   
 $f'_c = 24 \text{ MPa (3,500 p.s.i.)}$   
 $n = 8.5$

BRIDGE APPROACH PAVEMENT (SPECIAL)  
 (Sheet 3 of 4)