

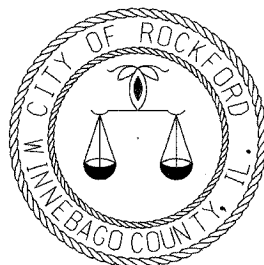
F.A.P. RTE.	SECTION	COUNTY	TOTAL SHEETS	SHEET NO.
303	03-00520-00-WR	WINNEBAGO	252	1

STATE OF ILLINOIS
 DEPARTMENT OF TRANSPORTATION
 DIVISION OF HIGHWAYS
**PROPOSED
 HIGHWAY PLANS**

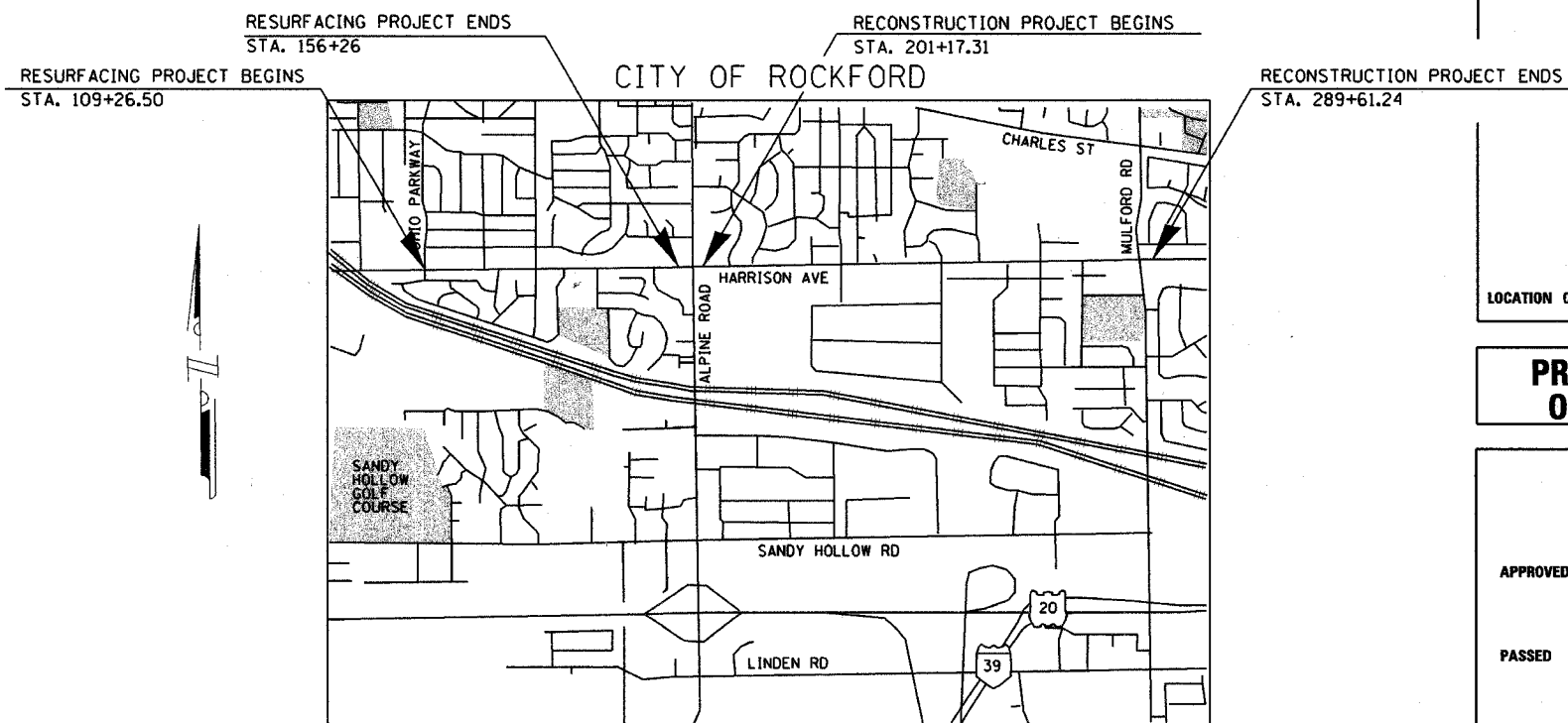
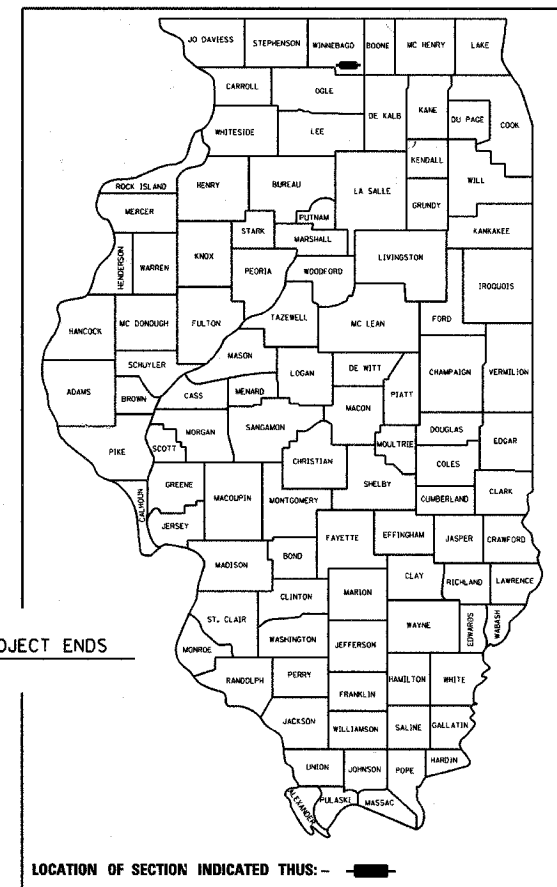
F.A. ROUTE 525
 SECTION 03-00520-00-WR
 PROJECT ACF-525(107)
 WINNEBAGO COUNTY
 C-92-082-05

UTILITY NOTE

THE LOCATIONS OF THOSE BURIED AND ABOVE GROUND UTILITIES SHOWN ARE APPROXIMATE, ARE SHOWN FOR CONTRACTOR INFORMATIONAL USE ONLY, AND ARE NOT TO BE REFERENCED FOR CONSTRUCTION PURPOSES. THE IMPLIED PRESENCE OR ABSENCE OF UTILITIES IS NOT TO BE CONSTRUED BY THE OWNER, ENGINEER, CONTRACTOR, OR SUBCONTRACTORS TO BE AN ACCURATE AND COMPLETE REPRESENTATION OF UTILITIES THAT MAY OR MAY NOT EXIST ON THE CONSTRUCTION SITE. BURIED AND ABOVE GROUND UTILITY LOCATION, IDENTIFICATION, AND MARKING ARE THE SOLE RESPONSIBILITY OF THE CONTRACTOR. REROUTING, DISCONNECTION, PROTECTION, ETC. OF ANY UTILITY MUST BE COORDINATED BETWEEN THE CONTRACTOR, UTILITY COMPANY AND OWNER. SITE SAFETY, INCLUDING THE AVOIDANCE OF HAZARDS ASSOCIATED WITH BURIED AND ABOVEGROUND UTILITIES, REMAINS THE SOLE RESPONSIBILITY OF THE CONTRACTOR.



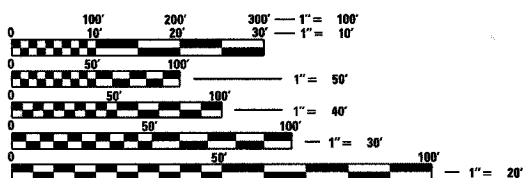
INDEX OF SHEETS	
SHT NO	TITLE
1	COVER SHEET
2	HIGHWAY STANDARDS
3-11	SUMMARY OF QUANTITIES
12-14	GENERAL NOTES AND COMMITMENTS
15-21	TYPICAL SECTIONS
22-25	HORIZONTAL AND VERTICAL CONTROL
26-40	SCHEDULE OF QUANTITIES
41-71	STAGING PLANS
72-82	REMOVAL PLANS
83-107	PLAN AND PROFILE SHEETS
108-127	DRAINAGE PLANS
128-137	EROSION CONTROL PLANS
138-143	PAVEMENT JOINTS
144-151	INTERSECTION PAVEMENT ELEVATIONS
152-167	PAVEMENT MARKING
168-171	OMITTED
173-189	TRAFFIC SIGNAL PLANS / LIGHTING PLANS
190-200	SPECIAL DETAILS
201-254	CROSS SECTIONS



PROJECT LENGTH = 13790.26 FEET / 2.612 MILES
 NET LENGTH = 13543.43 FEET / 2.565 MILES

LOCATION MAP

ADT : 30200
 RTE CLASS : PRINCIPAL ARTERIAL
 DESIGN SPEED : 50 MPH



FULL SIZE PLANS HAVE BEEN PREPARED USING STANDARD ENGINEERING SCALES. REDUCED SIZED PLANS WILL NOT CONFORM TO STANDARD SCALES. IN MAKING MEASUREMENTS ON REDUCED PLANS, THE ABOVE SCALES MAY BE USED.

J.U.L.I.E.
 JOINT UTILITY LOCATION INFORMATION FOR EXCAVATION
 1-800-892-0123

"MISSMAN, STANLEY & ASSOCIATES (MISSMAN) HAS ADOPTED SAFETY PROCEDURES FOR ITS EMPLOYEES WHO PROVIDE PROFESSIONAL ENGINEERING AND SURVEYING SERVICES. A COPY OF THESE PROCEDURES IS AVAILABLE FROM THE SAFETY OFFICER. MISSMAN PERSONNEL ARE NOT TRAINED IN CONTRACTOR (CONSTRUCTION) SAFETY AND COMPLIANCE PROCEDURES. THE METHODS & MEANS TO COMPLY WITH CONSTRUCTION SITE SAFETY ARE THE SOLE RESPONSIBILITY OF THE CONTRACTOR."

CONTRACT NO. 85390

PRINTED BY THE AUTHORITY
 OF THE STATE OF ILLINOIS

STATE OF ILLINOIS
 DEPARTMENT OF TRANSPORTATION

APPROVED April 20 20 06
Bud T. Molberg
 CITY ENGINEER, CITY OF ROCKFORD

PASSED April 26 20 06
Tom F. John
 DISTRICT ENGINEER LOCAL ROADS AND STREETS

APPROVED FOR BIDDING April 26 20 06
Gregory L. Montagna
 DISTRICT ENGINEER

I HEREBY CERTIFY THAT THESE PLANS WERE PREPARED BY ME OR UNDER MY DIRECT SUPERVISION AND THAT I AM A DULY REGISTERED PROFESSIONAL ENGINEER UNDER THE LAWS OF THE STATE OF ILLINOIS.

Frank J. Hodina
 FRANK J. HODINA DATE April 29, 2006
 REG. NO. 062-041838 RENEWAL DATE 11/30/2006