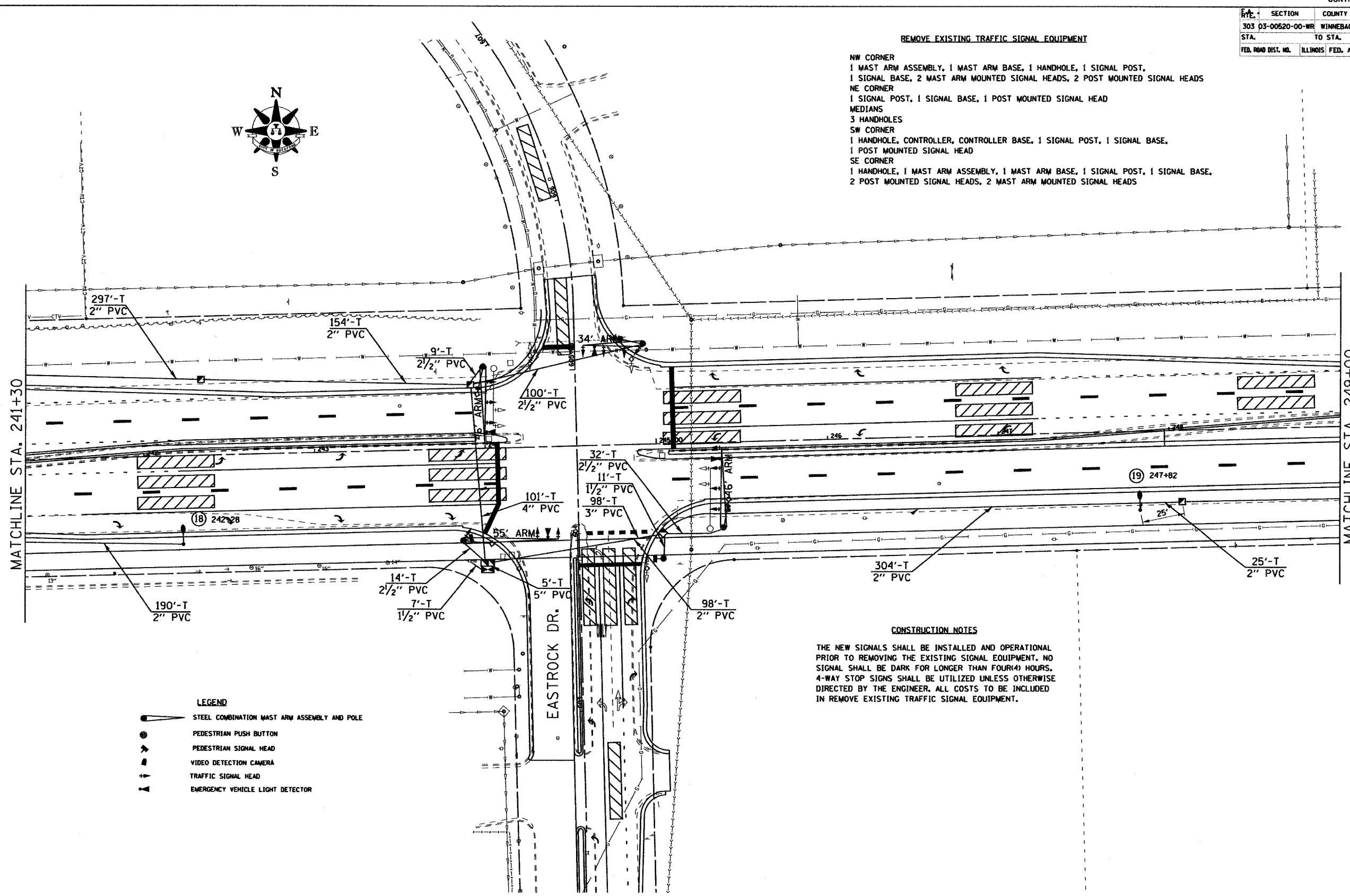


ROUTE	SECTION	COUNTY	TOTAL SHEETS	SHEET NO.
303	03-00520-00-WR	WINNEBAGO	254	182
STA. TO STA.				
FED. ROAD DIST. NO.		ILLINOIS FED. AID PROJECT		

REMOVE EXISTING TRAFFIC SIGNAL EQUIPMENT

- NW CORNER
- 1 MAST ARM ASSEMBLY, 1 MAST ARM BASE, 1 HANDHOLE, 1 SIGNAL POST,
- 1 SIGNAL BASE, 2 MAST ARM MOUNTED SIGNAL HEADS, 2 POST MOUNTED SIGNAL HEADS
- NE CORNER
- 1 SIGNAL POST, 1 SIGNAL BASE, 1 POST MOUNTED SIGNAL HEAD
- MEDIANS
- 3 HANDHOLES
- SW CORNER
- 1 HANDHOLE, CONTROLLER, CONTROLLER BASE, 1 SIGNAL POST, 1 SIGNAL BASE,
- 1 POST MOUNTED SIGNAL HEAD
- SE CORNER
- 1 HANDHOLE, 1 MAST ARM ASSEMBLY, 1 MAST ARM BASE, 1 SIGNAL POST, 1 SIGNAL BASE,
- 2 POST MOUNTED SIGNAL HEADS, 2 MAST ARM MOUNTED SIGNAL HEADS



- LEGEND**
- STEEL COMBINATION MAST ARM ASSEMBLY AND POLE
  - PEDESTRIAN PUSH BUTTON
  - PEDESTRIAN SIGNAL HEAD
  - VIDEO DETECTION CAMERA
  - TRAFFIC SIGNAL HEAD
  - EMERGENCY VEHICLE LIGHT DETECTOR

CONSTRUCTION NOTES

THE NEW SIGNALS SHALL BE INSTALLED AND OPERATIONAL PRIOR TO REMOVING THE EXISTING SIGNAL EQUIPMENT. NO SIGNAL SHALL BE DARK FOR LONGER THAN FOUR(4) HOURS. 4-WAY STOP SIGNS SHALL BE UTILIZED UNLESS OTHERWISE DIRECTED BY THE ENGINEER. ALL COSTS TO BE INCLUDED IN REMOVE EXISTING TRAFFIC SIGNAL EQUIPMENT.