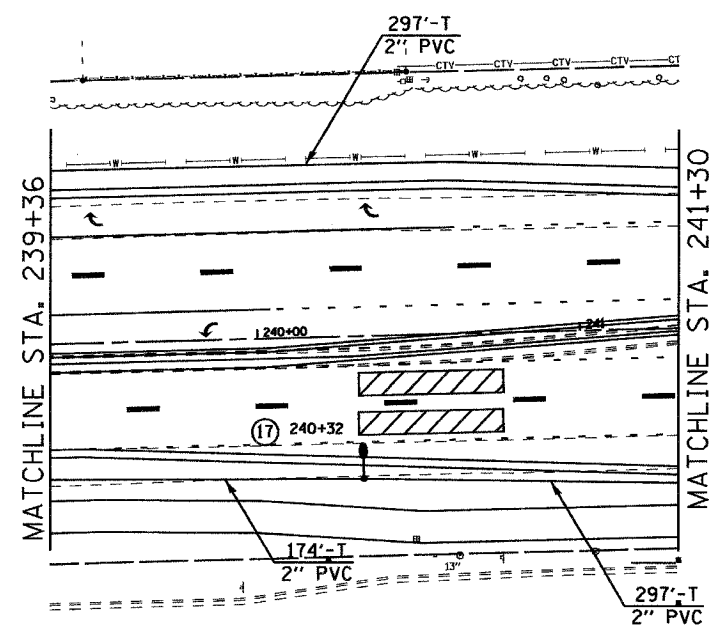
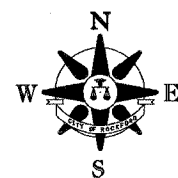
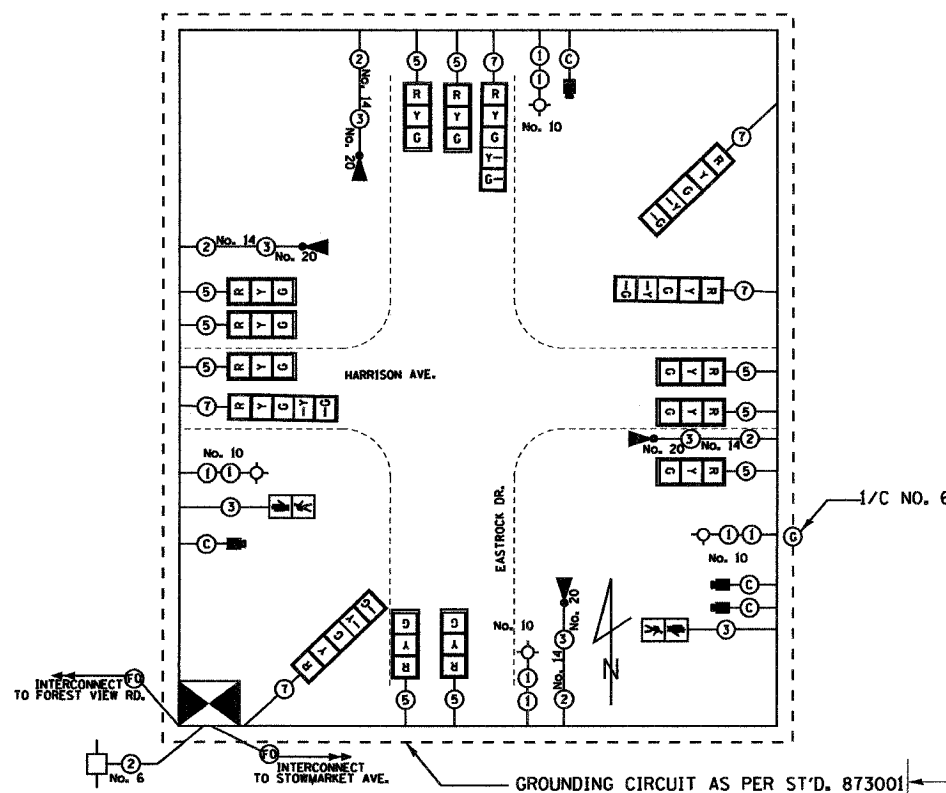


STATE	SECTION	COUNTY	TOTAL SHEETS	SHEET NO.
303	03-00520-00-WR	WINNEBAGO	264	183
STA.	TO STA.			
	ILLINOIS		FED. AID PROJECT	



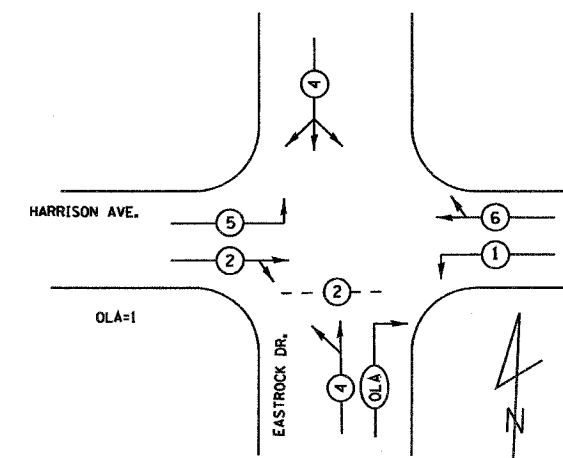
- LEGEND**
- STEEL COMBINATION MAST ARM ASSEMBLY AND POLE
 - PEDESTRIAN PUSH BUTTON
 - PEDESTRIAN SIGNAL HEAD
 - VIDEO DETECTION CAMERA
 - TRAFFIC SIGNAL HEAD
 - EMERGENCY VEHICLE LIGHT DETECTOR

WIRING DIAGRAM

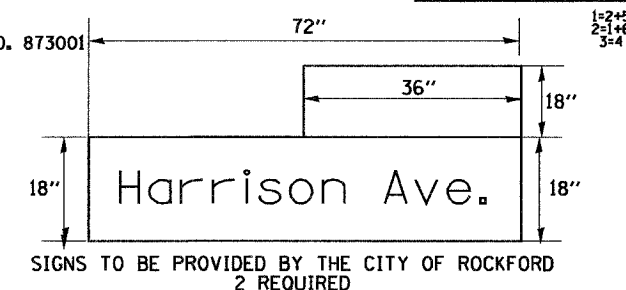


- LEGEND**
- NO. OF CONDUCTORS IN SIGNAL CABLE
 - TRAFFIC SIGNAL HEAD W/BACKPLATE
 - EMERGENCY PREEMPT LIGHT DETECTOR AND CONFIRMATION BEACON
 - PEDESTRIAN PUSH BUTTON
 - PEDESTRIAN SIGNAL HEAD
 - LUMINAIRE, SODIUM VAPOR 250 W, HPS

PHASE DESIGNATION DIAGRAM



PROPOSED EMERGENCY VEHICLE PREEMPTORS			
EMERGENCY VEHICLE PREEMPTOR	1	2	3
MOVEMENT			



NOTE: RELOCATE EXISTING "EASTROCK DR." STREET NAME SIGNS TO NEW MAST ARM ASSEMBLIES. COST INCLUDED IN STEEL COMBINATION MAST ARM ASSEMBLY AND POLE.