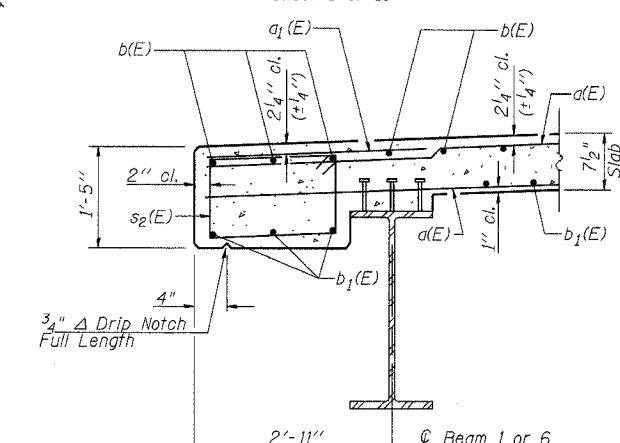
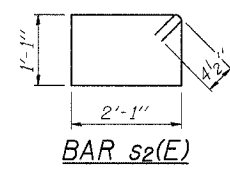
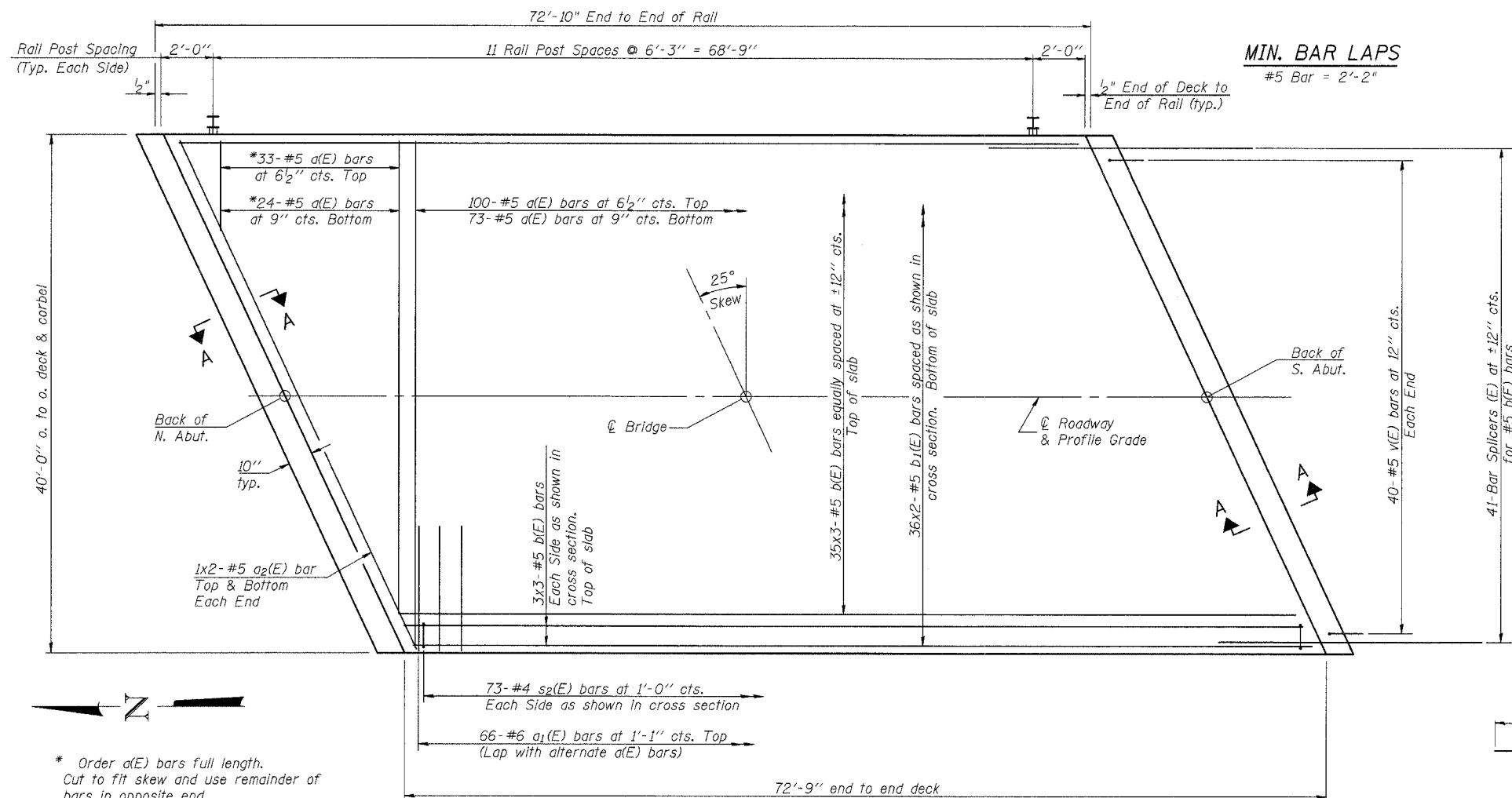


ROUTE NO.	SECTION	COUNTY	TOTAL SHEETS	SHEET NO.
FAS 622	04-00077-01-BR	SANGAMON	22	10
ILLINOIS PROJECT				

CONTRACT NO. 93414
Sheet 5 of 13

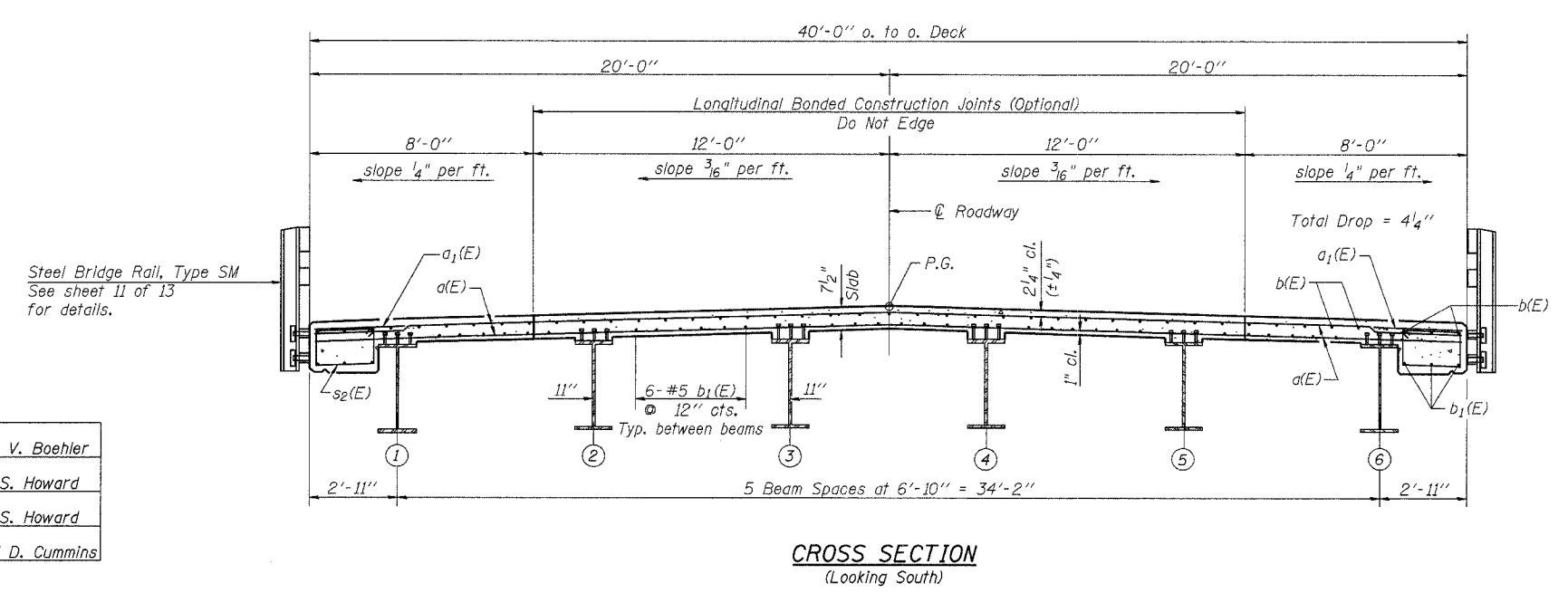
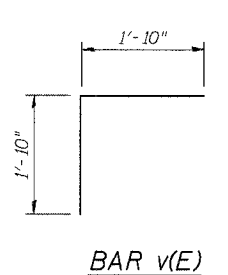
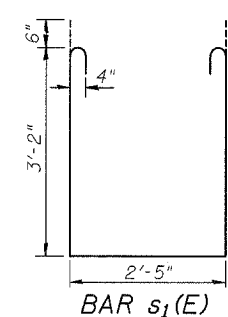
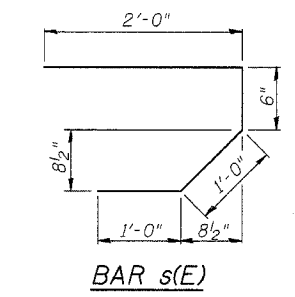


* Order a(E) bars full length. Cut to fit skew and use remainder of bars in opposite end.

PLAN

SUPERSTRUCTURE
BILL OF MATERIAL

Bar	No.	Size	Length	Shape	
a(E)	230	#5	39'-8"	—	
a ₁ (E)	132	#6	4'-6"	—	
a ₂ (E)	8	#5	23'-0"	—	
b(E)	123	#5	25'-7"	—	
b ₁ (E)	72	#5	37'-5"	—	
m(E)	20	#6	23'-3"	—	
m ₁ (E)	24	#6	9'-8"	—	
m ₂ (E)	10	#6	7'-2"	—	
m ₃ (E)	4	#6	2'-10"	—	
s(E)	82	#5	4'-6"	U	
s ₁ (E)	72	#4	9'-9"	U	
s ₂ (E)	146	#4	7'-1"	U	
v(E)	80	#5	3'-8"	L	
Concrete Superstructure				Cu. Yd.	106
Reinforcement Bars, Epoxy Coated				Pound	19720
Bar Splacers				Each	82



CROSS SECTION
(Looking South)

DESIGNED	Ruben V. Boehler
CHECKED	Tim S. Howard
DRAWN	Tim S. Howard
CHECKED	Michael D. Cummins

Notes:
Reinforcement bars designated (E) shall be epoxy coated.
Bars indicated thus 35 x 3-#5 etc. indicates 35 lines of bars with 3 lengths per line.
See Sheet 6 of 13 for diaphragm details and Section A-A.

SUPERSTRUCTURE
C.H. 15 OVER LITTLE SPRING CREEK
SECTION 04-00077-01-BR
SANGAMON COUNTY
STA. 45+35
S.N. 084-3407
CUMMINS ENGINEERING CORPORATION
JOB #: 2157
FILE #: 2157SUPER
DATE: 10/13/05