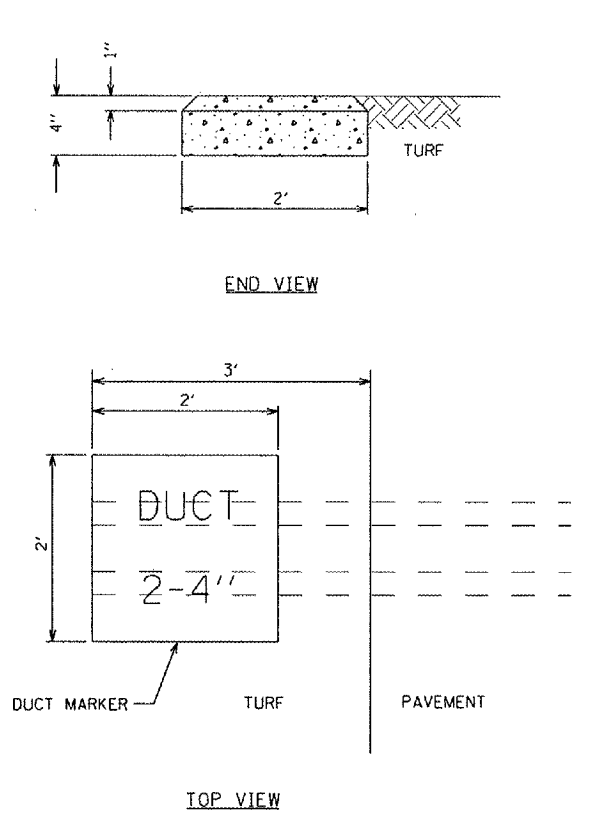


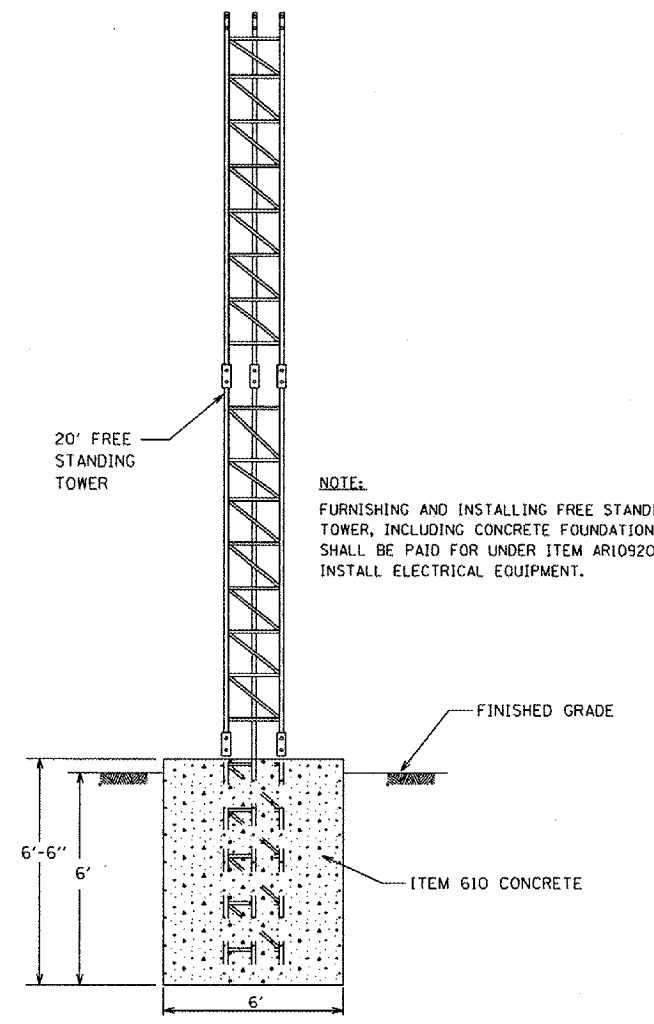
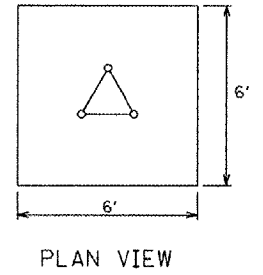
- NOTES**
1. THE CONCRETE FOUNDATION SHALL BE TROWEL FINISHED WITH A 45° BEVELED EDGE WITH THE SURFACE TO DRAIN.
  2. THE PRIMARY CABLE CONNECTOR JOINTS SHALL BE WRAPPED WITH ONE LAYER OF RUBBER TAPE (SCOTCH NO. 63) AND ONE LAYER OF PLASTIC TAPE (SCOTCH NO. 88), ONE-HALF LAPPED, EXTENDING 1/2" EACH SIDE OF JOINT AND COVERED WITH HEAT SHRINK TUBING
  3. A MINIMUM OF THREE FOOT OF CABLE SLACK SHALL BE LEFT AT THE BASE CAN. THIS REQUIRED SLACK WILL BE LEFT ON THE CABLE SIDE OF ALL PRIMARY CONNECTORS AND SPLICES. THIS REQUIRED SLACK WILL BE CONSIDERED INCIDENTAL TO THE CONTRACT.
  4. ALL MOUNTING BOLTS SHALL BE COATED WITH AN ANTI-SIEZING LUBRICANT.
  5. CONTRACTOR SHALL INSTALL HEAT SHRINK TUBING AT ALL TERMINATION OF UNIT DUCT (TYPICAL).

L-806 WIND CONE AND FOUNDATION DETAIL  
NOT TO SCALE



- NOTES**
1. LETTERS 4" HIGH, 3" WIDE WITH WIDTH OF STROKE 1/2" AND 1/4" DEEP. ALL LETTERS, NUMBERS AND ARROWS TO BE IMPRESSED. SCRATCHED FIGURES WILL NOT BE ACCEPTABLE.
  2. WHEN THE PAVEMENT IS CONSTRUCTED OF CONCRETE, THE LETTER "D" SHALL BE IMPRESSED IN THE PAVEMENT 4' FROM EACH EDGE OF PAVEMENT DIRECTLY ABOVE THE CENTER LINE OF THE DUCT BANK. THE LETTER SHALL BE FORMED AS DESCRIBED IN NOTE 1. THE IMPRESSED "D" SHALL BE REQUIRED IN ADDITION TO THE CONCRETE DUCT MARKER.
  3. DUCT MARKERS SHALL BE CONSIDERED INCIDENTAL TO THE CONTRACT.

CONCRETE DUCT MARKER DETAIL  
NOT TO SCALE



FREE STANDING TOWER DETAIL (20' HEIGHT)  
NOT TO SCALE

**NOTE:**  
FURNISHING AND INSTALLING FREE STANDING TOWER, INCLUDING CONCRETE FOUNDATION, SHALL BE PAID FOR UNDER ITEM ARI09200 INSTALL ELECTRICAL EQUIPMENT.

DATE	REVISION

GREATER BEARDSTOWN MUNICIPAL AIRPORT  
CITY OF BEARDSTOWN, BEARDSTOWN, ILLINOIS

FILENAME	Electrical Details.dgn
SCALE	NO SCALE
DATE	MARCH 20, 2006
SHEET 9 OF 10 SHEETS	
LAYOUT	MCM 03/07/06
DRAWN	MCM 03/07/06
REVIEWED	RHB 03/07/06



BENTON & ASSOCIATES, INC.  
1970 W. LAFAYETTE AVE., JACKSONVILLE IL 62650  
(217) 245-4146 (217) 245-4149 FAX  
KIRKSVILLE MISSOURI  
MACOMB ILLINOIS  
ST. LOUIS MISSOURI

ELECTRICAL DETAILS	
ILL. PROJ. NO. K06-3439	A.I.P. PROJ. NO. 3-17-0004-B8

Job No. 06E1688  
9  
SHEET 9 OF 10