

MODEL: Default
 FILE NAME: C:\Users\13081.IDOT - DIST 4 - P19 201.033\Work\Order 13 - FY 2023 Parking Lots\19 Transportation\CADD Sheets\Peoria Facility\003-4 Summary Quant Sht.dgn
 DATE: 5/30/23 10:52:42 AM

CODE NO.	ITEM	UNIT	TOTAL QUANTITY	CONSTRUCTION CODE			
				PEORIA COUNTY			
				100% STATE 0044 URBAN			
20200100	EARTH EXCAVATION	CU YD	705	705			
21001000	GEOTECHNICAL FABRIC FOR GROUND STABILIZATION	SQ YD	485	485			
21101505	TOPSOIL EXCAVATION AND PLACEMENT	CU YD	10	10			
28000400	PERIMETER EROSION BARRIER	FOOT	200	200			
28000510	INLET FILTERS	EACH	1	1			
35101800	AGGREGATE BASE COURSE, TYPE B 6"	SQ YD	485	485			
35102000	AGGREGATE BASE COURSE, TYPE B 8"	SQ YD	2623	2623			
40600275	BITUMINOUS MATERIALS (PRIME COAT)	POUND	590	590			
40602978	HMA BINDER COURSE, IL 9.5, N50	TON	367	367			
40604050	HMA SURFACE COURSE, MIX C, IL 9.5, N50	TON	220	220			
42000401	PORTLAND CEMENT CONCRETE PAVEMENT 9" (JOINTED)	SQ YD	485	485			
44000100	PAVEMENT REMOVAL	SQ YD	550	550			
44200050	WELDED WIRE REINFORCEMENT	SQ YD	485	485			
60255700	MANHOLES TO BE ADJUSTED WITH NEW TYPE 1 FRAME & GRATE, OPEN LID	EACH	2	2			
60603800	COMBINATION CONCRETE CURB AND GUTTER, TYPE B-6.12	FOOT	82	82			
60600605	CONCRETE CURB, TYPE B	FOOT	550	550			

1

KLINGNER & ASSOCIATES, P.C.
 Engineers • Architects • Surveyors
 www.klingner.com
 Galesburg, Illinois

USER NAME = mrich	DESIGNED - MCR	REVISED -
PLOT SCALE = 100.0000' / in.	DRAWN - MCR	REVISED -
PLOT DATE = 5/17/2023	CHECKED - MCL	REVISED -
	DATE -	REVISED -

**STATE OF ILLINOIS
DEPARTMENT OF TRANSPORTATION**

SUMMARY OF QUANTITIES





SCALE: NONE	SHEET 1 OF 2 SHEETS	STA. N/A	TO STA. N/A
-------------	---------------------	----------	-------------

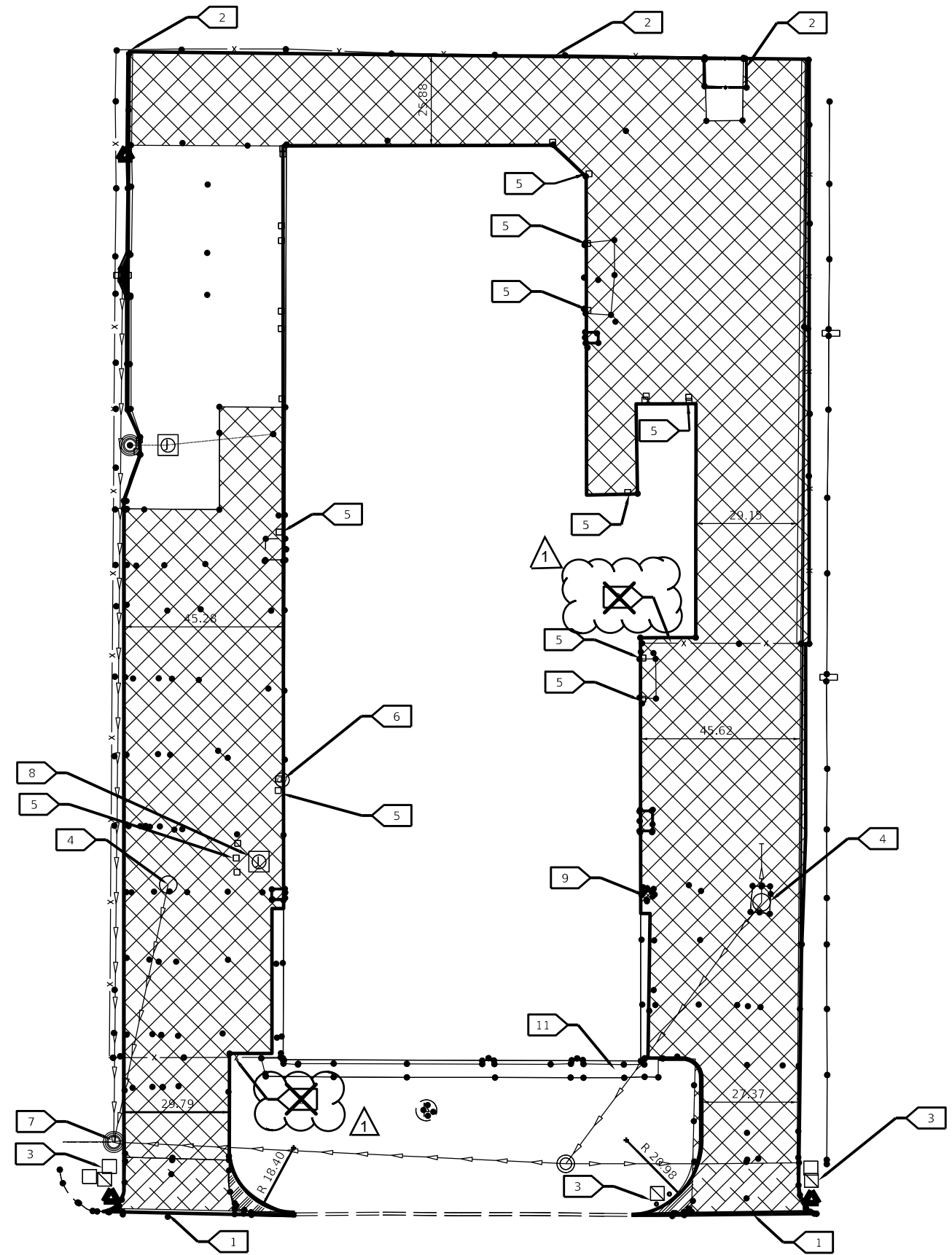
F.A.X RTE.	SECTION	COUNTY	TOTAL SHEETS	SHEET NO.
N/A	D4 PARKING LOT RESURF 2023-1	PEORIA	10	3
CONTRACT NO. 68H67				
ILLINOIS FED. AID PROJECT				

SITE DEMOLITION PLAN KEY NOTES:

- 1 CURB REMOVAL
- 3 JUNCTION BOX TO REMAIN
- 4 FRAME AND GRATE/MANHOLE TO BE ADJUSTED
- 5 REMOVE BOLLARDS
- 6 VALVE TO BE ADJUSTED
- 7 MANHOLE TO REMAIN
- 8 ELECTRICAL BOX TO REMAIN
- 9 COMMUNICATION TOWER TO REMAIN
- 10 DUMPSTER TO BE REMOVED AND RE-SET
- 11 SIDEWALK TO REMAIN

LEGEND

-  PCC PAVEMENT AND INTEGRAL CURB REMOVAL
-  HMA PAVEMENT REMOVAL
-  GRASS/SOIL REMOVAL
-  FULL-DEPTH SAWCUT



MODEL: Mch21
 FILE NAME: G:\3\Files\21081_IDOT_DIST_4_PTB_201623\Work_Ordor_13_EY_2023_Parkway_Lots18_Transportation\CADD_Sheets\Peoria_Facility\007_Peoria_DEMO.dwg
 Galesburg, Illinois
 40 North Payne Street
 300-442-4442

KLINGNER & ASSOCIATES, P.C.
 Engineers • Architects • Surveyors
 www.klingner.com
 Quincy, IL, Marshall, MO
 Burlington, IA, Peoria, IA, Columbus, MO
 Des Moines, IA, Cedarville, IL

USER NAME = mirch	DESIGNED - MCR	REVISED -
PLOT SCALE = 40,000 / in.	DRAWN - MCR	REVISED -
PLOT DATE = 3/17/2023	CHECKED - MCL	REVISED -
	DATE -	REVISED -

**STATE OF ILLINOIS
DEPARTMENT OF TRANSPORTATION**

DEMOLITION PLAN

SCALE: SHEET 1 OF 1 SHEETS STA. N/A TO STA. N/A

F.A.X RTE.	SECTION	COUNTY	TOTAL SHEETS	SHEET NO.
N/A	D4 PARKING LOT RESURF 2023-I	PEORIA	10	7
CONTRACT NO. 68H67				
ILLINOIS FED. AID PROJECT				