

STATE OF ILLINOIS
DEPARTMENT OF TRANSPORTATION

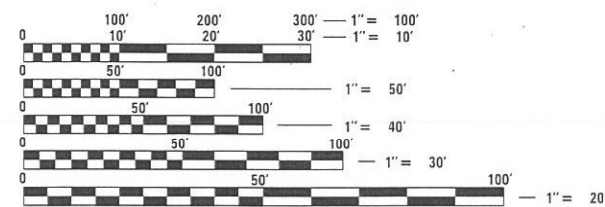
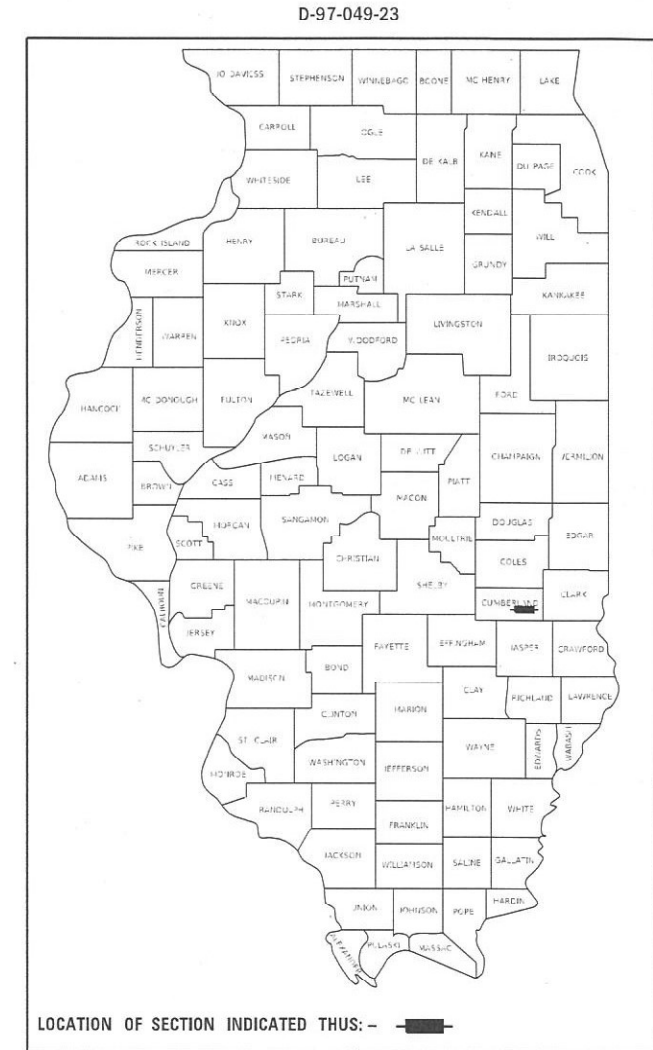
F.A. RTE.	SECTION	COUNTY	TOTAL SHEETS	SHEET NO.
D7	HMA RESURF 2023-2	CUMBERLAND	15	1
* FAI 70 & FAP 116		ILLINOIS	CONTRACT NO. 74C05	

FOR INDEX OF SHEETS, SEE SHEET NO. 2

PROPOSED HIGHWAY PLANS

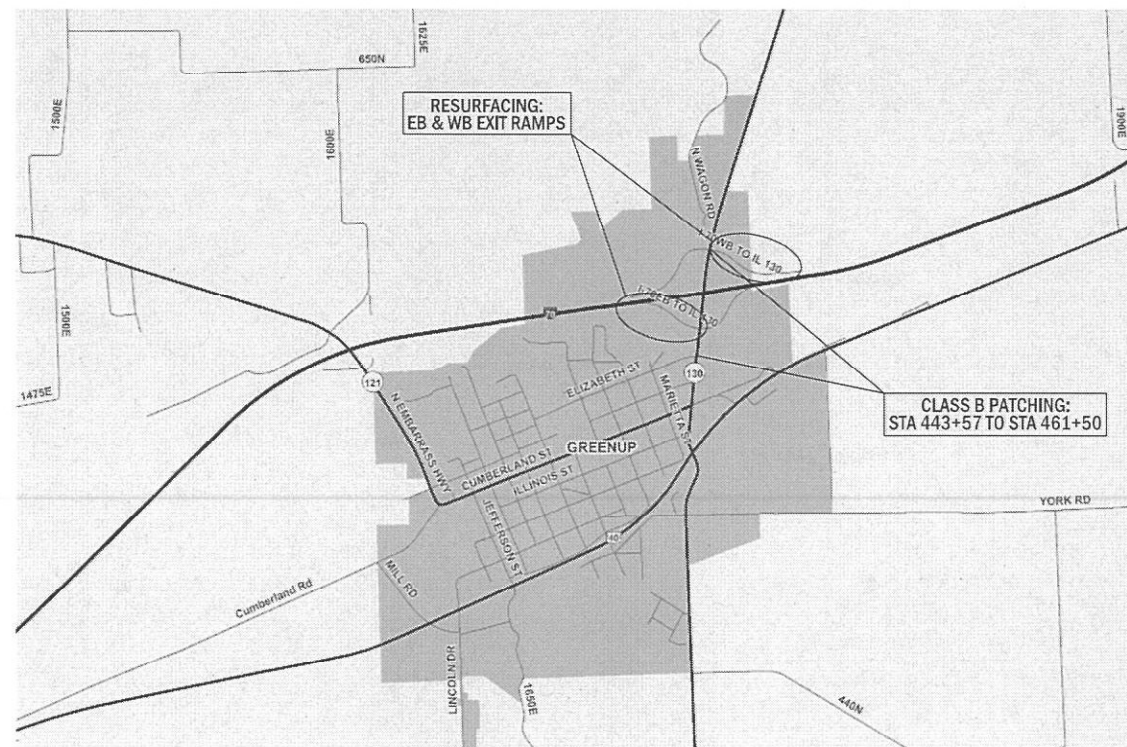
FAI ROUTE 70 & FAP ROUTE 116 (I 70 & IL 130)
SECTION D7 HMA RESURF 2023-2
PROJECT
ASPHALT OVERLAY WITH PATCHING
CUMBERLAND COUNTY

C-97-054-23



FULL SIZE PLANS HAVE BEEN PREPARED USING STANDARD ENGINEERING SCALES. REDUCED SIZED PLANS WILL NOT CONFORM TO STANDARD SCALES. IN MAKING MEASUREMENTS ON REDUCED PLANS, THE ABOVE SCALES MAY BE USED.

J.U.L.I.E.
JOINT UTILITY LOCATION INFORMATION FOR EXCAVATORS
1-800-892-0123
OR 811



PROJECT ENGINEER: BRIAN LEWIS
PROJECT MANAGER: BRIAN BIERMAN

GROSS LENGTH = 5,355 FT. = 1.01 MILE
NET LENGTH = 5,355 FT. = 1.01 MILE

CONTRACT NO. 74C05

STATE OF ILLINOIS
DEPARTMENT OF TRANSPORTATION

SUBMITTED April 3 20 23

Jeffrey P. Myrland
REGIONAL ENGINEER

May 12, 2023 [Signature]
ENGINEER OF DESIGN AND ENVIRONMENT

May 12, 2023 [Signature]
DIRECTOR OF HIGHWAYS PROJECT IMPLEMENTATION

PRINTED BY THE AUTHORITY
OF THE STATE OF ILLINOIS

INDEX OF SHEETS

SHEET NO.	ITEM
1	COVER SHEET
2	GENERAL NOTES, INDEX OF SHEETS & LIST OF STANDARDS
3-4	SUMMARY OF QUANTITIES
5	TYPICAL SECTIONS
6	SCHEDULES OF QUANTITIES
7-10	PLAN SHEETS
11	PAVING DETAILS
12-15	STRIPING DETAILS

THE FOLLOWING STANDARDS ARE A PART OF THESE PLANS AND ARE INCLUDED FOLLOWING THE LAST NUMBERED SHEET OF THE PLANS.

STANDARD NO. DESCRIPTION

000001-08	STANDARD SYMBOLS, ABBREVIATIONS AND PATTERNS
001001-02	AREAS OF REINFORCEMENT BARS
001006	DECIMAL OF AN INCH AND OF A FOOT
420001-10	PAVEMENT JOINTS
442101-09	CLASS B PATCHES
701001-02	OFF-RD OPERATIONS, 2L, 2W, MORE THAN 15' AWAY
/01006-05	OFF-RD OPERATIONS, 2L, 2W, 15' TO 24' FROM PAVEMENT EDGE
701011-04	OFF-RD MOVING OPERATIONS, 2L, 2W, DAY ONLY
701106-02	OFF-ROAD OPERATIONS, MULTILANE, MORE THAN 15' AWAY
701201-05	LANE CLOSURE, 2L, 2W, DAY ONLY, FOR SPEED \geq 45 MPH
701301-04	LANE CLOSURE, 2L, 2W, SHORT TIME OPERATIONS
701306-04	LANE CLOSURE, 2L, 2W, SLOW MOVING OPERATIONS DAY ONLY, FOR SPEEDS \geq 45 MPH
701336-07	LANE CLOSURE, 2L, 2W, WORK AREAS IN SERIES, FOR SPEEDS \geq 45 MPH
701400-11	APPROACH TO LANE CLOSURE, FREEWAY/EXPRESSWAY
701401-13	LANE CLOSURE, FREEWAY/EXPRESSWAY
701456-05	PARTIAL RAMP CLOSURE FREEWAY/EXPRESSWAY
701901-08	TRAFFIC CONTROL DEVICES
780001-05	TYPICAL PAVEMENT MARKINGS
781001-04	TYPICAL APPLICATIONS RAISED REFLECTIVE PAVEMENT MARKERS

GENERAL NOTES

THIS PROJECT IS LOCATED AT THE GREENUP INTERCHANGE ON I 70 AND IL 130 IN CUMBERLAND COUNTY AND CONSISTS OF PATCHING ON IL 130 AND RESURFACING AND PAVEMENT MARKING ON THE I 70 EXIT RAMP AND ANY OTHER WORK NECESSARY TO COMPLETE THIS SECTION.

MATERIAL FOR AGGREGATE WEDGE SHOULDERS TYPE B, SHALL BE CRUSHED STONE OR CRUSHED CONCRETE.

MILLED PAVEMENT SHALL BE RESURFACED WITH BINDER WITHIN 5 CALENDAR DAYS.

ALL LANES OF INTERSTATE 70 SHALL BE OPEN TO TRAFFIC DURING THE 2024 SOLAR ECLIPSE FROM 7:00 A.M. ON SATURDAY APRIL 6, 2024 THROUGH 10:00 P.M. ON MONDAY APRIL 8, 2024.

THE RAISED REFLECTIVE PAVEMENT MARKERS INDICATED ON THE SCHEDULES TO BE AMBER/RED OR CRYSTAL/RED RATHER THAN ONE WAY AMBER OR ONE WAY CRYSTAL SHALL BE PLACED ON THE EXIT RAMP WITH THE RED LENSE FACING THE WRONG WAY TRAVEL DIRECTION. THE RED LENSES FOR THESE MARKERS SHALL BE INCLUDED IN THE COST OF THE PAY ITEM INVOLVED.

THE QUANTITIES FOR PAVEMENT PATCHING ARE ESTIMATES. THE ACTUAL LOCATIONS AND QUANTITIES SHALL BE DETERMINED BY THE ENGINEER IN THE FIELD.

WHEN APPLYING SHORT TERM PAVEMENT MARKINGS, TEMPORARY TAPE SHALL BE USED ON THE SURFACE COURSE AND BINDER COURSE. PAINT SHALL BE USED ON THE MILLED SURFACE.

THE LOCATIONS AND/OR DEPTHS OF UNDERGROUND UTILITIES SHOWN HAVE BEEN TAKEN FROM INFORMATION FURNISHED BY THE UTILITY OWNERS AND MUST BE CONSIDERED APPROXIMATE. FIELD MARKINGS OF FACILITIES IN CRITICAL AREAS MAY BE OBTAINED BY PROVIDING MINIMUM OF NINETY-SIX (96) HOURS ADVANCE NOTICE THROUGH THE THE J.U.L.I.E. SYSTEM BY CALLING 800-892-0123.

QUANTITIES FOR MODIFIED URETHANE PAVEMENT MARKING - LINE 4" CONSISTS OF 4,378 FEET OF WHITE AND 2,237 FEET OF YELLOW.

QUANTITIES FOR MODIFIED URETHANE PAVEMENT MARKING - LINE 8" CONSISTS OF 390 FEET OF WHITE.

QUANTITIES FOR MODIFIED URETHANE PAVEMENT MARKING - LINE 12" CONSISTS OF 207 FEET OF WHITE.

QUANTITIES FOR MODIFIED URETHANE PAVEMENT MARKING - LINE 24" CONSISTS OF 75 FEET OF WHITE.

THE RESIDENT ENGINEER SHALL BE THE SOLE JUDGE CONCERNING THE CURING TIME FOR HOT-MIX ASPHALT LIFTS.

THE FOLLOWING MIXTURE REQUIREMENTS ARE APPLICABLE TO THIS PROJECT:

LOCATION(S)	MIXTURE USE(S)	PG	DESIGN AIR VOIDS	MIXTURE COMPOSITION	FRICTION AGGREGATE	MIXTURE WEIGHT	QUALITY MANAGEMENT PROGRAM	SUBLOT SIZE
MAINLINE/SHOULDERS	POLYMERIZED HMA SURFACE COURSE, IL-9.5, MIX "D", N90 (2")	SBS PG 70-22	4.0% @ N=90	IL - 9.5	MIXTURE D	N90	QC/QA	3000
MAINLINE/SHOULDERS	POLYMERIZED HMA BINDER COURSE, IL-19.0, N90 (2 1/4")	SBS PG 70-22	4.0% @ N=90	IL - 19.0	N/A	N90	QC/QA	3000

MODEL: Default
 FILE: \\blmfe-pw-bentley.com\P\INDOT\Documents\DOT Office\Dir\dir: 7\Project\74C05\CADDData\CAD\Sheets\DOT\74C05-sf-gen-note.dgn

USER NAME = Mona.Steffen	DESIGNED -	REVISED -
	DRAWN -	REVISED -
PLOT SCALE = 100,0000 ' / in.	CHECKED -	REVISED -
PLOT DATE = 4/5/2023	DATE -	REVISED -

**STATE OF ILLINOIS
DEPARTMENT OF TRANSPORTATION**

**GENERAL NOTES, INDEX OF SHEETS &
LIST OF STANDARDS**

SCALE: SHEET OF SHEETS STA. TO STA.

F.A. RTE.	SECTION	COUNTY	TOTAL SHEETS	SHEET NO.
*	D7 HMA RESURF 2023-2	CUMBERLAND	15	2
* FAI 70 & FAP 116		CONTRACT NO. 74C05		
ILLINOIS FED. AID PROJECT				

100% STATE

100% STATE

SUMMARY OF QUANTITIES			TOTAL QUANTITIES	CONSTRUCTION TYPE CODE		
CODE NO	ITEM	UNIT		0005		
40600275	BITUMINOUS MATERIALS (PRIME COAT)	POUND	6557	6557		
40600990	TEMPORARY RAMP	SQ YD	1824	1824		
40603240	POLYMERIZED HOT-MIX ASPHALT BINDER COURSE, IL-19.0, N90	TON	1322	1322		
40604164	POLYMERIZED HOT-MIX ASPHALT SURFACE COURSE, IL-9.5, MIX "D", N90	TON	1175	1175		
44000155	HOT-MIX ASPHALT SURFACE REMOVAL, 1 1/2"	SQ YD	5139	5139		
44000166	HOT-MIX ASPHALT SURFACE REMOVAL, 4 1/4"	SQ YD	3939	3939		
44200050	WELDED WIRE REINFORCEMENT	SQ YD	857	857		
44201007	CLASS B PATCHES, TYPE II, 13 INCH	SQ YD	144	144		
44201011	CLASS B PATCHES, TYPE III, 13 INCH	SQ YD	48	48		
44201013	CLASS B PATCHES, TYPE IV, 13 INCH	SQ YD	809	809		
44201299	DOWEL BARS 1 1/2"	EACH	594	594		
44213200	SAW CUTS	FOOT	2489	2489		
44213204	TIE BARS 3/4"	EACH	285	285		

SUMMARY OF QUANTITIES			TOTAL QUANTITIES	CONSTRUCTION TYPE CODE		
CODE NO	ITEM	UNIT		0005		
48102100	AGGREGATE WEDGE SHOULDER, TYPE B	TON	418	418		
67100100	MOBILIZATION	L SUM	1	1		
70100450	TRAFFIC CONTROL AND PROTECTION, STANDARD 701201	L SUM	1	1		
70100460	TRAFFIC CONTROL AND PROTECTION, STANDARD 701306	L SUM	1	1		
70100600	TRAFFIC CONTROL AND PROTECTION, STANDARD 701336	L SUM	1	1		
70100800	TRAFFIC CONTROL AND PROTECTION, STANDARD 701401	L SUM	1	1		
70100825	TRAFFIC CONTROL AND PROTECTION, STANDARD 701456	L SUM	1	1		
70107025	CHANGEABLE MESSAGE SIGNS	CAL DA	56	56		
70300100	SHORT TERM PAVEMENT MARKING	FOOT	225	225		
70300150	SHORT TERM PAVEMENT MARKING REMOVAL	SQ FT	75	75		
* 78009004	MODIFIED URETHANE PAVEMENT MARKING - LINE 4"	FOOT	6615	6615		
* 78009008	MODIFIED URETHANE PAVEMENT MARKING - LINE 8"	FOOT	390	390		
* 78009012	MODIFIED URETHANE PAVEMENT MARKING - LINE 12"	FOOT	207	207		

* SPECIALTY ITEM

REV. - MS

MODEL: Default
 FILE: \\miller-pw-bentley.com\FWIDOT\Documents\DOT_Offices\District_7\Projects\74C05\CADD\Drawings\74C05-SP-S00.dgn

USER NAME = Mona.Steffen	DESIGNED -	REVISED -
	DRAWN -	REVISED -
PLOT SCALE = 100.0000' / in.	CHECKED -	REVISED -
PLOT DATE = 4/5/2023	DATE -	REVISED -

STATE OF ILLINOIS
DEPARTMENT OF TRANSPORTATION

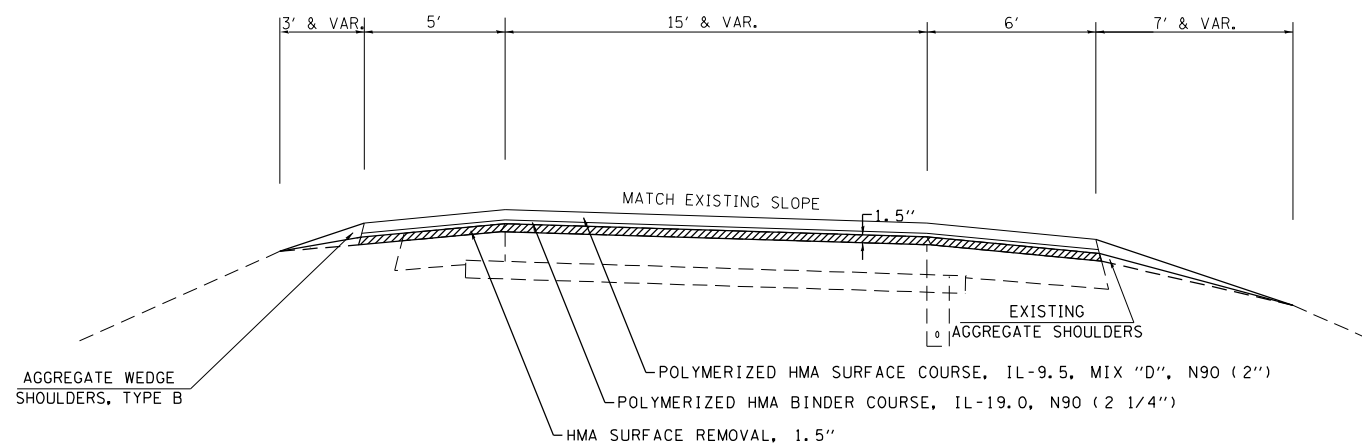
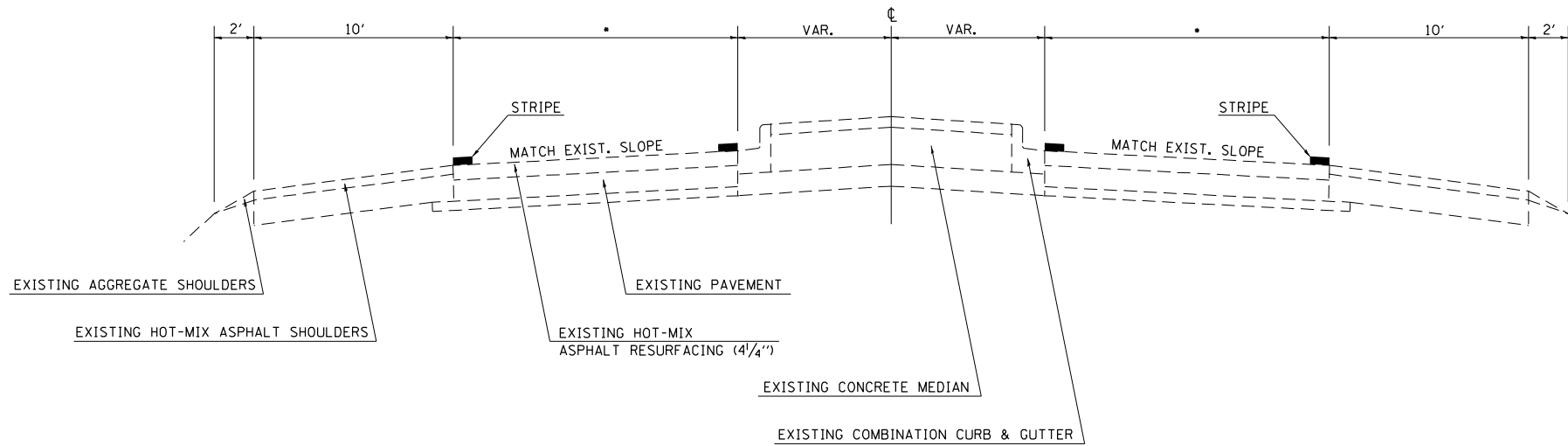
SUMMARY OF QUANTITIES

SCALE: SHEET OF SHEETS STA. TO STA.

F.A. RTE.	SECTION	COUNTY	TOTAL SHEETS	SHEET NO.
*	D7 HMA RESURF 2023-2	CUMBERLAND	15	3
* FAI 70 & FAP 116			CONTRACT NO. 74C05	
ILLINOIS FED. AID PROJECT				

TYPICAL CROSS SECTION

IL 130 (PATCHING ONLY)
 STA 443+57 TO STA 459+50: • = 13' & VAR.
 STA 459+50 TO STA 461+50: • = 14' & VAR.



PROPOSED TYPICAL SECTION

WESTBOUND EXIT RAMP
 STA 181+90 TO STA 200+00
 EASTBOUND EXIT RAMP
 STA 382+54 TO STA 400+00

MODEL: Default
 FILE NAME: p:\ultra-cw-bee\paw.com\PIV\DOT\Documents\DOT_offices\Dir\dir_7\Project\74C05\CADD\DATA\CAD\Sheet\74C05-sht-typical.dgn

USER NAME = Mona.Steffen	DESIGNED -	REVISED -
	DRAWN -	REVISED -
PLOT SCALE = 100,0000' / in.	CHECKED -	REVISED -
PLOT DATE = 4/5/2023	DATE -	REVISED -

**STATE OF ILLINOIS
 DEPARTMENT OF TRANSPORTATION**

TYPICAL SECTIONS

SCALE: SHEET OF SHEETS STA. TO STA.

F.A. RTE.	SECTION	COUNTY	TOTAL SHEETS	SHEET NO.
*	D7 HMA RESURF 2023-2	CUMBERLAND	15	5
* FAI 70 & FAP 116		CONTRACT NO. 74C05		
		ILLINOIS	FED. AID PROJECT	

PAVING SCHEDULE

STATION TO STATION	LENGTH	PAVEMENT WIDTH	ASPHALT SHOULDER WIDTH	AGGREGATE SHOULDER WIDTH	AVERAGE AGGREGATE SHOULDER THICKNESS	HOT-MIX ASPHALT SURFACE REMOVAL, 1.5"	HOT-MIX ASPHALT SURFACE REMOVAL, 4.25"	HOT-MIX ASPHALT REMOVAL, VARIABLE DEPTH	BITUMINOUS MATERIALS (TACK COAT)	POLYMERIZED HMA SURFACE COURSE, IL-9.5, MIX "D", N90	POLYMERIZED HMA BINDER COURSE, IL-19.0, N90	TEMPORARY RAMP	AGGREGATE WEDGE SHOULDER, TYPE B
	FEET	FEET	FEET	FEET	INCHES	SQ YD	SQ YD	SQ YD	POUND	TON	TON	SQ YD	TON
WESTBOUND I 70 EXIT RAMP													
STA 181+90 TO STA 184+57	267	1 - 16	0 & 6	0 & 7	2 - 0.5	0	430	0	290	48	54	618	15
STA 184+57 TO STA 188+52	395	15	0 & 6	0 & 7	2 - 0.5	0	922	0	622	103	116	0	22
STA 188+52 TO STA 189+07	55	15	5 & 6	3 & 7	1.3 - 2.6	0	0	159	107	18	20	0	7
STA 189+07 TO STA 197+96	889	15	5 & 6	3 & 7	4.8 - 0.5	2568	0	0	1734	288	324	0	149
STA 197+96 TO STA 198+51	55	15	5 & 6	3 & 7	1.3 - 2.6	0	0	159	107	18	20	0	7
STA 198+51 TO STA 199+76	125	15 - 136	5 & 6	3 & 7	2 - 0.5	0	543	0	366	61	68	250	10
EASTBOUND I 70 EXIT RAMP													
STA 382+00 TO STA 384+41	241	1 - 16	0 & 6	0 & 7	2 - 0.5	0	388	0	262	130	147	558	13
STA 384+41 TO STA 388+63	422	15	0 & 6	0 & 7	2 - 0.5	0	985	0	665	110	124	0	23
STA 388+63 TO STA 389+18	55	15	5 & 6	3 & 7	1.3 - 2.6	0	0	159	107	18	20	0	7
STA 389+18 TO STA 398+08	890	15	5 & 6	3 & 7	4.8 - 0.5	2571	0	0	1736	288	324	0	149
STA 398+08 TO STA 398+63	55	15	5 & 6	3 & 7	1.3 - 2.6	0	0	159	107	18	20	0	7
STA 398+63 TO STA 399+76	113	15 - 172	5 & 6	3 & 7	2 - 0.5	0	671	0	453	75	85	398	9
TOTALS:	3562					5139	3939	636	6557	1175	1322	1824	418

STRIPING SCHEDULE

STATION TO STATION	LENGTH	GROOVING FOR RECESSED PAVEMENT MARKING 5"	GROOVING FOR RECESSED PAVEMENT MARKING 9"	GROOVING FOR RECESSED PAVEMENT MARKING 13"	GROOVING FOR RECESSED PAVEMENT MARKING 25"	MODIFIED URETHANE PAVEMENT MARKING - LINE 4"	MODIFIED URETHANE PAVEMENT MARKING - LINE 8"	MODIFIED URETHANE PAVEMENT MARKING - LINE 12"	MODIFIED URETHANE PAVEMENT MARKING - LINE 24"	RAISED REFLECTIVE PAVEMENT MARKER	SHORT TERM PAVEMENT MARKING	SHORT TERM PAVEMENT MARKING REMOVAL
	FEET	FOOT	FOOT	FOOT	FOOT	FOOT	FOOT	FOOT	FOOT	EACH	FOOT	SQ FT
WESTBOUND I 70 EXIT RAMP												
STA 181+90 TO STA 184+56	266	266	0	0	0	266	0	0	0	13	0	0
STA 184+56 TO STA 188+52	396	792	0	0	0	792	0	0	0	30	0	0
STA 188+52 TO STA 194+00	548	1096	0	0	0	1096	0	0	0	14	0	0
STA 194+00 TO STA 198+21	421	842	0	0	0	842	0	0	0	0	0	0
STA 198+21 TO STA 198+46	25	50	36	0	0	50	36	0	0	0	0	0
STA 198+46 TO STA 199+76	130	260	149	94	37	260	149	94	37	0	111	37
EASTBOUND I 70 EXIT RAMP												
STA 382+00 TO STA 384+43	243	243	0	0	0	243	0	0	0	12	0	0
STA 384+43 TO STA 388+63	420	840	0	0	0	840	0	0	0	32	0	0
STA 388+63 TO STA 394+30	567	1134	0	0	0	1134	0	0	0	14	0	0
STA 394+30 TO STA 398+25	395	790	0	0	0	790	0	0	0	0	0	0
STA 398+25 TO STA 398+50	25	50	36	0	0	50	36	0	0	0	0	0
STA 398+50 TO STA 399+76	126	252	169	113	38	252	169	113	38	0	114	38
TOTALS:	3562	6615	390	207	75	6615	390	207	75	115	225	75

IL 130 PATCHING SCHEDULE

LANE	STATION	LENGTH	WIDTH	CLASS B PATCHES, TYPE II, 13 INCH	CLASS B PATCHES, TYPE III, 13 INCH	CLASS B PATCHES, TYPE IV, 13 INCH	TIE BARS 3/4"	WELDED WIRE REINFORCEMENT	SAW CUTS	DOWEL BARS 1 1/2"
		FEET	FEET	SQ YD	SQ YD	SQ YD	EACH	SQ YD	FEET	EACH
SB	442+22	20	15	0.0	0.0	32.2	9	32	85	24
NBT	444+24	6	12	8.0	0.0	0.0	0	0	50	20
SB	446+19	6	14	9.3	0.0	0.0	0	0	56	24
NBT	446+19	6	12	8.0	0.0	0.0	0	0	50	20
NBT	446+41	6	12	8.0	0.0	0.0	0	0	50	20
SB	446+75	6	14	9.3	0.0	0.0	0	0	56	24
NB	453+40	9	14	14.0	0.0	0.0	0	0	62	24
SB	453+62	10	14	0.0	15.6	0.0	0	16	64	24
SB	454+61	6	14	9.3	0.0	0.0	0	0	56	24
SB	455+88	6	14	9.3	0.0	0.0	0	0	56	24
NB	456+19	6	14	9.3	0.0	0.0	0	0	56	24
SB	457+90	8	14	12.4	0.0	0.0	0	0	60	24
NBRTSP	458+43	25	6	0.0	16.7	0.0	12	17	70	10
NB	458+68	22	14	0.0	0.0	34.2	10	34	88	24
NB	458+91	6	14	9.3	0.0	0.0	0	0	56	24
NB	459+14	10	14	0.0	15.6	0.0	0	16	64	24
SBT	460+44	161	12	0.0	0.0	214.7	80	215	360	20
NB	459+79	8	14	12.4	0.0	0.0	0	0	60	24
NB	461+06	60	14	0.0	0.0	93.3	29	93	164	24
SB	461+50	25	12	0.0	0.0	33.3	12	33	88	20
NBT	443+80	117	12	0.0	0.0	156.0	58	156	272	20
NBT	443+57	70	12	0.0	0.0	93.3	34	93	178	20
SBT	456+29	40	18	0.0	0.0	80.0	19	80	136	28
NB	456+83	46	14	0.0	0.0	71.6	22	72	136	24
EB OFF RAMP	GORE	8	16	14.2	0.0	0.0	0	0	66	28
WB OFF RAMP	GORE	6	16	10.7	0.0	0.0	0	0	62	28
TOTALS:				144	48	809	285	857	2489	594

MODEL: Default
 FILE: \\mde\paw_bentley.com\PIV\DOT\Documents\DOT Office\Director_7\Project\74C05\CADD\DATA\CAD\Sheet\DOT\74C05-PAS-Schedule.dgn

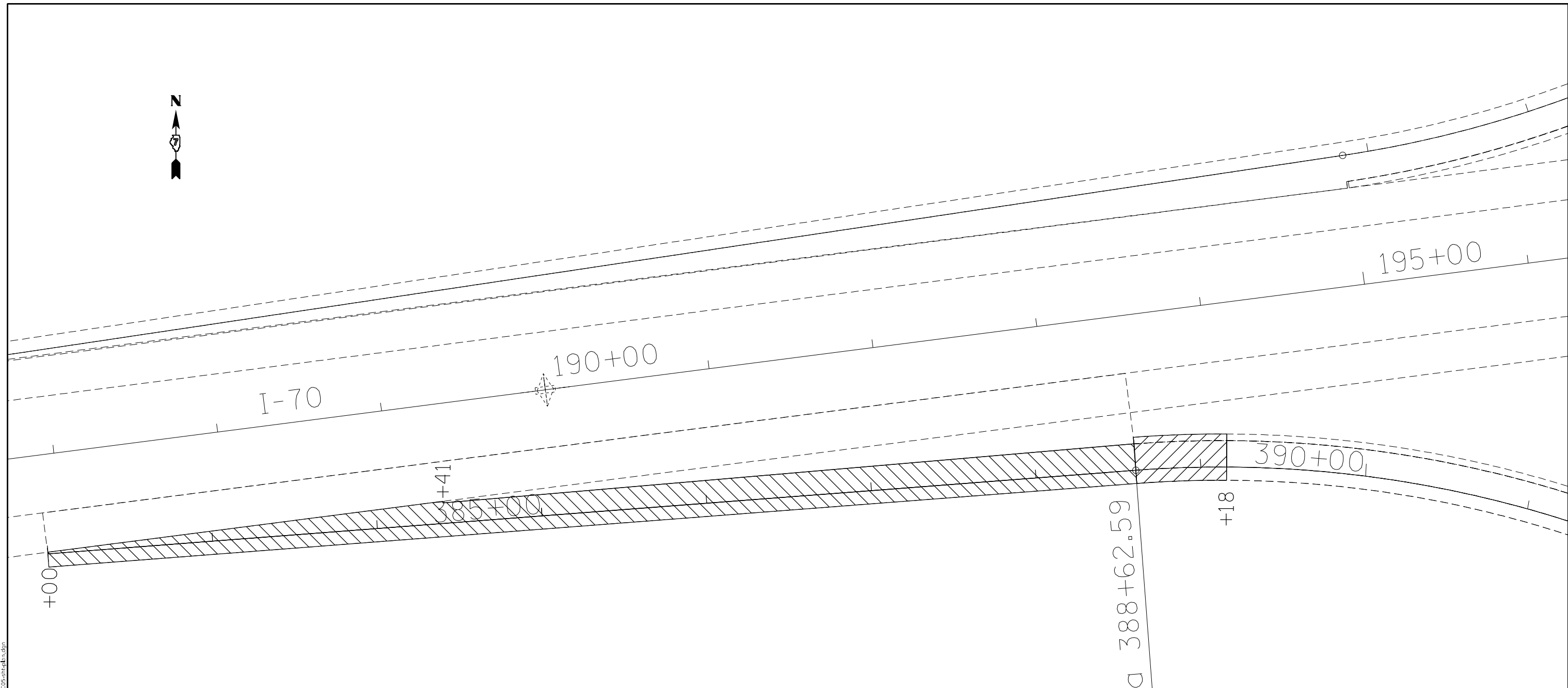
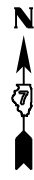
USER NAME = Mona.Steffen	DESIGNED -	REVISED -
	DRAWN -	REVISED -
PLOT SCALE = 100,0000' / in.	CHECKED -	REVISED -
PLOT DATE = 4/5/2023	DATE -	REVISED -

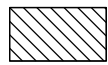
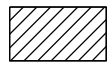
**STATE OF ILLINOIS
DEPARTMENT OF TRANSPORTATION**

SCHEDULES OF QUANTITIES

SCALE: SHEET OF SHEETS STA. TO STA.

F.A. RTE.	SECTION	COUNTY	TOTAL SHEETS	SHEET NO.
*	D7 HMA RESURF 2023-2	CUMBERLAND	15	6
* FAI 70 & FAP 116		CONTRACT NO. 74C05		
		ILLINOIS	FED. AID PROJECT	



-  = HOT-MIX ASPHALT SURFACE REMOVAL, 4 1/4"
-  = HOT-MIX ASPHALT SURFACE REMOVAL, VARIABLE DEPTH

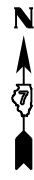
MODEL: Default
 FILE NAME: p:\ultra-cw-bee\paw.com\PIV\DOT\Documents\DOT Office\Dir\dir_7\Project\74C05\CADD\Drawings\74C05-rt-eh.dgn

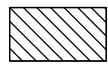
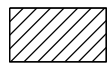
USER NAME = Mona.Steffen	DESIGNED -	REVISED -
	DRAWN -	REVISED -
PLOT SCALE = 60,0000 * / in.	CHECKED -	REVISED -
PLOT DATE = 4/5/2023	DATE -	REVISED -

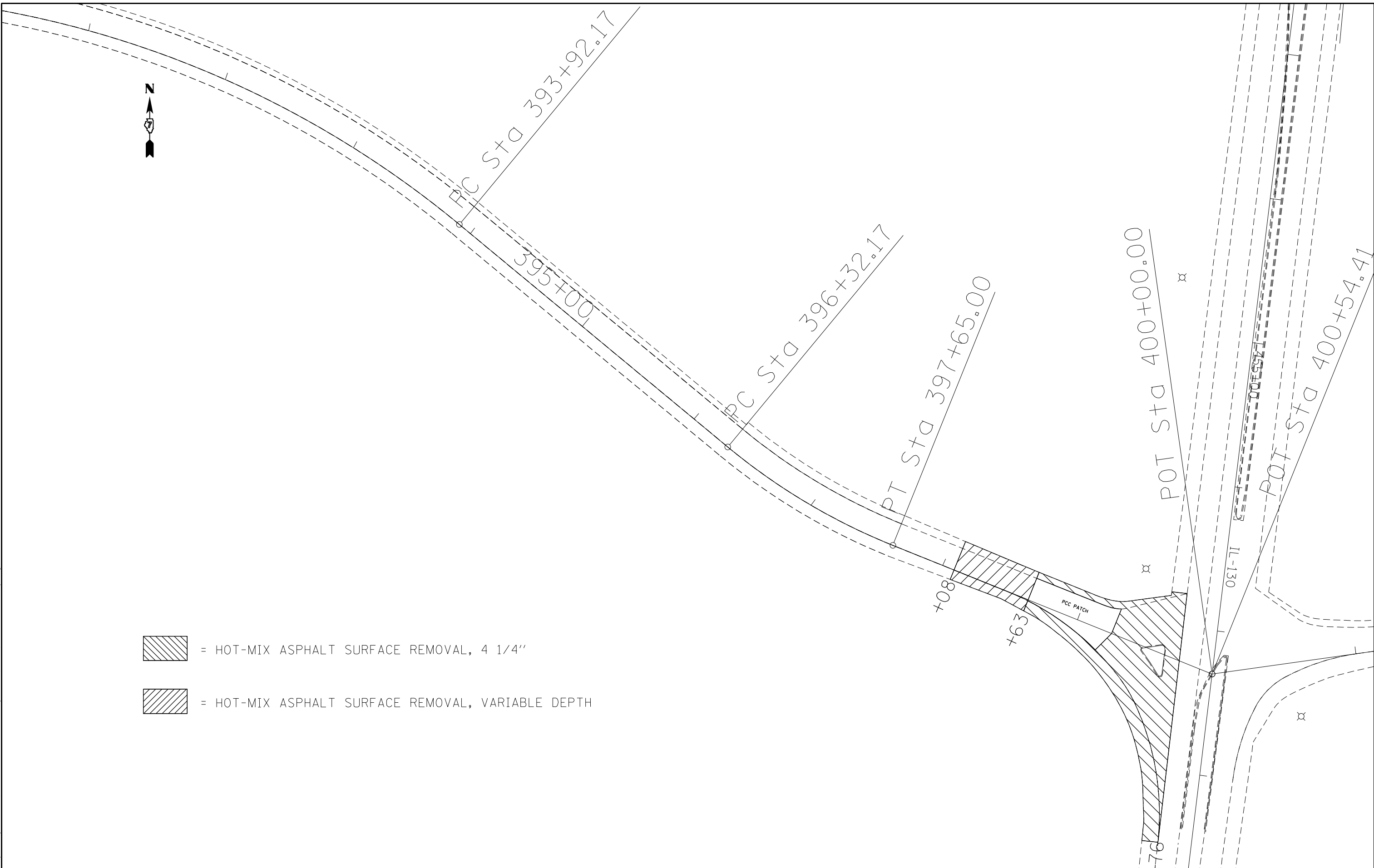
**STATE OF ILLINOIS
DEPARTMENT OF TRANSPORTATION**

EB EXIT RAMP PLAN			
SCALE: 30	SHEET	OF	SHEETS
	STA.	TO	STA.

F.A. RTE.	SECTION	COUNTY	TOTAL SHEETS	SHEET NO.
*	D7 HMA RESURF 2023-2	CUMBERLAND	15	7
* FAI 70 & FAP 116			CONTRACT NO. 74C05	
ILLINOIS FED. AID PROJECT				



-  = HOT-MIX ASPHALT SURFACE REMOVAL, 4 1/4"
-  = HOT-MIX ASPHALT SURFACE REMOVAL, VARIABLE DEPTH



MODEL: Default
 FILE NAME: p:\ultra-cw-bead\p\com\PIV\DOT\Documents\DOT Office\Director_7\Projects\74C05\CADD\Drawings\74C05-814.dgn

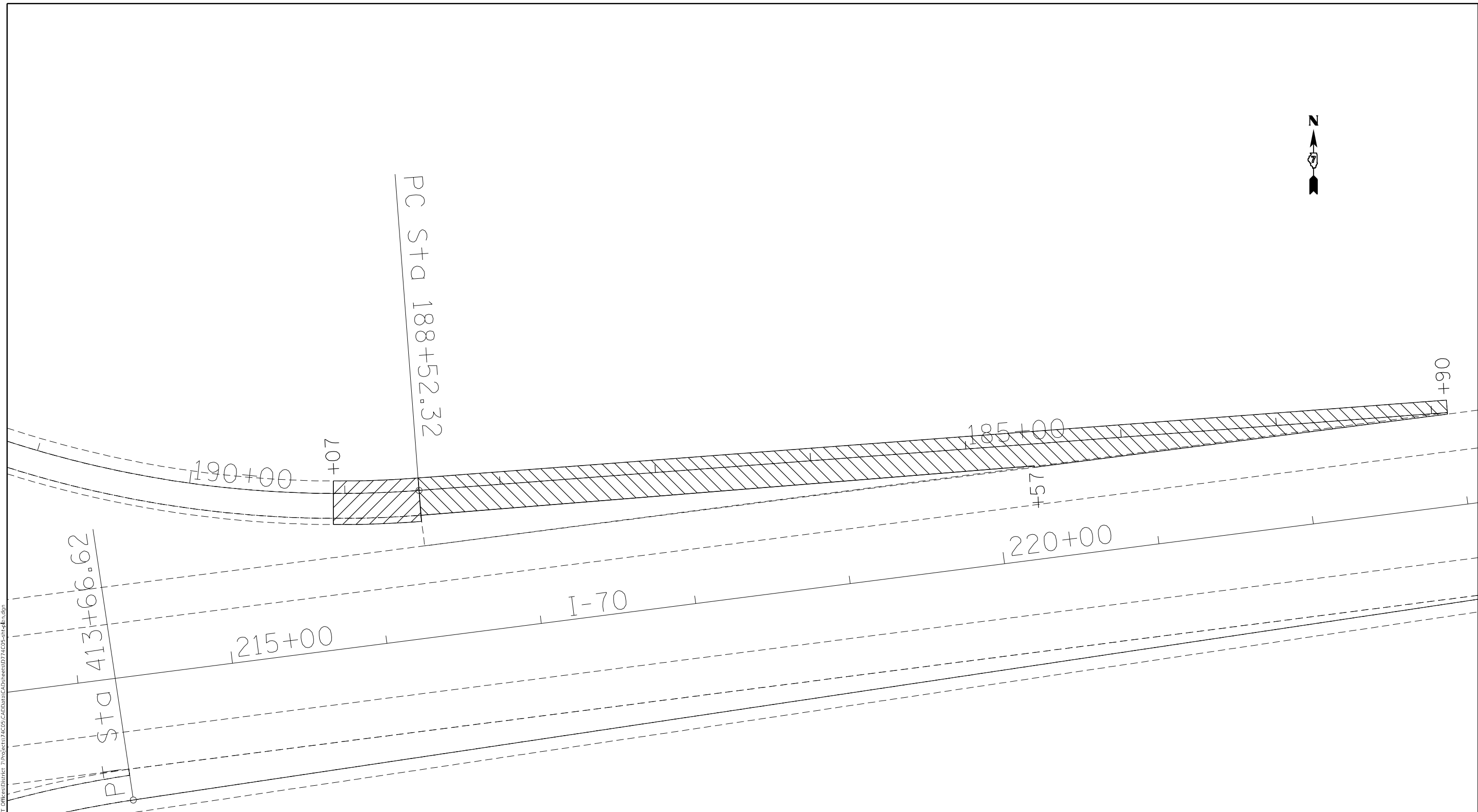
USER NAME = Mona.Steffen	DESIGNED -	REVISED -
	DRAWN -	REVISED -
PLOT SCALE = 60,0000 * / in.	CHECKED -	REVISED -
PLOT DATE = 4/5/2023	DATE -	REVISED -

**STATE OF ILLINOIS
DEPARTMENT OF TRANSPORTATION**

EB EXIT RAMP PLAN			
SCALE: 30	SHEET	OF	SHEETS
	STA.		TO STA.

F.A. RTE.	SECTION	COUNTY	TOTAL SHEETS	SHEET NO.
* D7 HMA RESURF 2023-2		CUMBERLAND	15	8
* FAI 70 & FAP 116				CONTRACT NO. 74C05

ILLINOIS FED. AID PROJECT



- = HOT-MIX ASPHALT SURFACE REMOVAL, 4 1/4"
- = HOT-MIX ASPHALT SURFACE REMOVAL, VARIABLE DEPTH

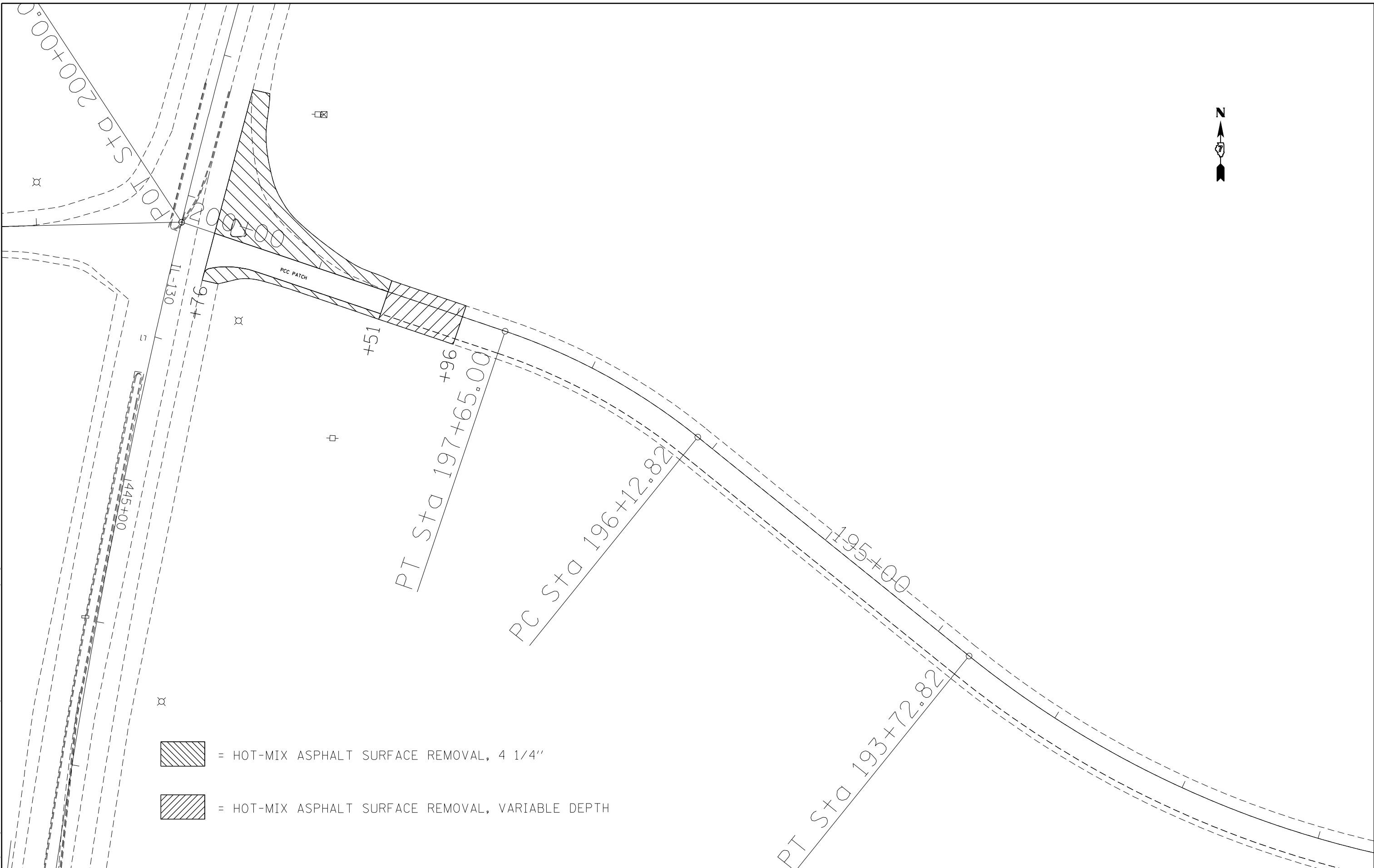
MODEL: Default
 FILE NAME: p:\iustest-cw-bee\fy.com\PIV\DOT\Documents\DOT Office\Dir\dr. 7\Project\74C05\CADD\DATA\CAD\Sheet\74C05-94.dgn

USER NAME = Mona.Steffen	DESIGNED -	REVISED -
	DRAWN -	REVISED -
PLOT SCALE = 60,0000 * / in.	CHECKED -	REVISED -
PLOT DATE = 4/5/2023	DATE -	REVISED -

**STATE OF ILLINOIS
DEPARTMENT OF TRANSPORTATION**

WB EXIT RAMP PLAN			
SCALE: 30	SHEET	OF	SHEETS
	STA.		TO STA.

F.A. RTE.	SECTION	COUNTY	TOTAL SHEETS	SHEET NO.
*	D7 HMA RESURF 2023-2	CUMBERLAND	15	9
* FAI 70 & FAP 116			CONTRACT NO. 74C05	
ILLINOIS		FED. AID PROJECT		



- = HOT-MIX ASPHALT SURFACE REMOVAL, 4 1/4"
- = HOT-MIX ASPHALT SURFACE REMOVAL, VARIABLE DEPTH

MODEL: Default
 FILE NAME: p:\i\idest-cw-bee\paw.com\PIV\DOT\Documents\DOT_Offices\Director_7\Projects\74C05\CADD\DATA\CAD\Sheet\74C05-sht-10.dgn

USER NAME = Mona.Steffen	DESIGNED -	REVISED -
	DRAWN -	REVISED -
PLOT SCALE = 60,0000 */ in.	CHECKED -	REVISED -
PLOT DATE = 4/5/2023	DATE -	REVISED -

**STATE OF ILLINOIS
DEPARTMENT OF TRANSPORTATION**

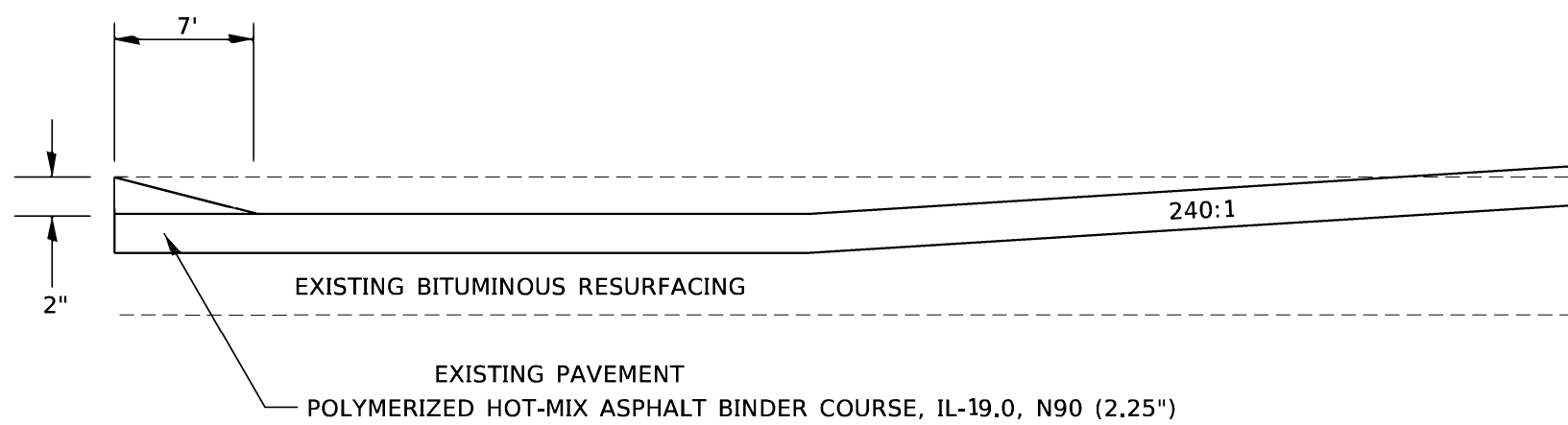
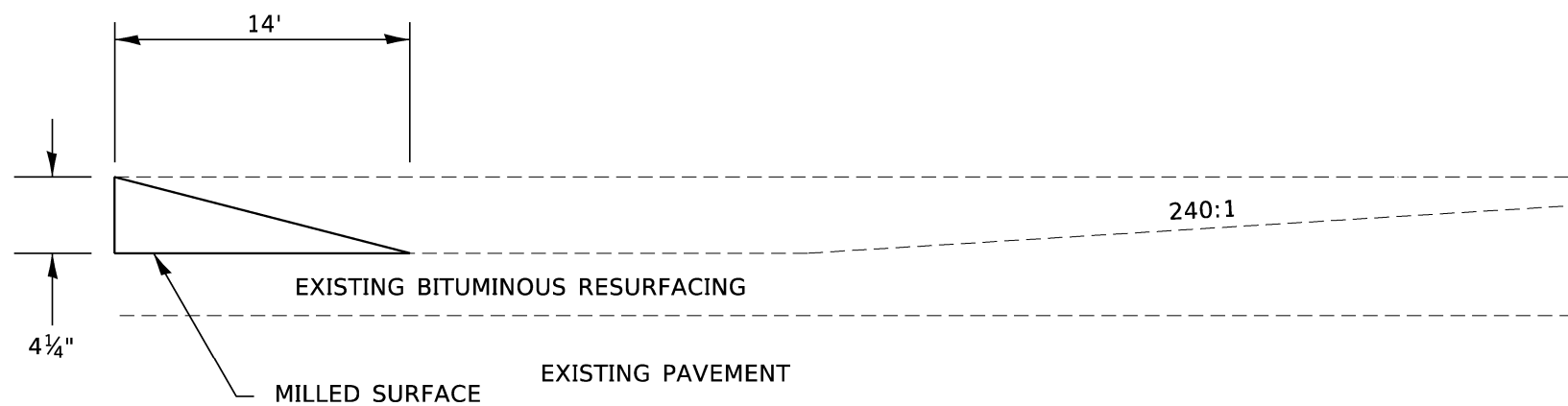
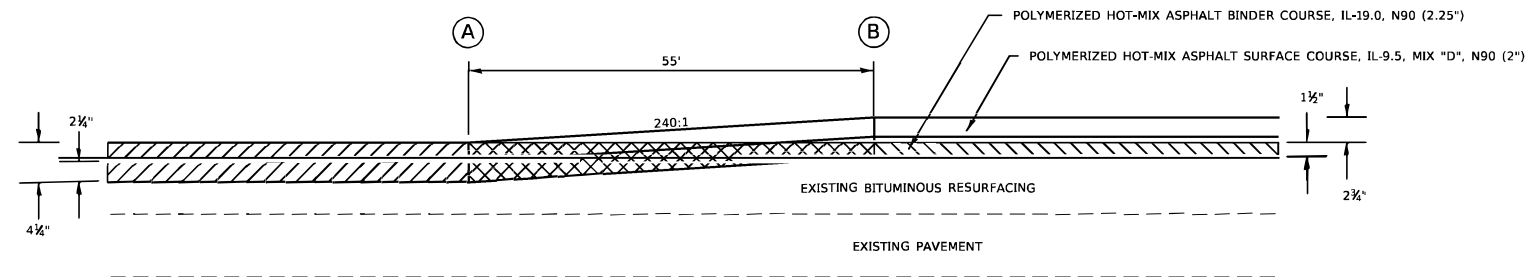
WB EXIT RAMP PLAN			
SCALE: 30	SHEET	OF	SHEETS
	STA.		TO STA.

F.A. RTE.	SECTION	COUNTY	TOTAL SHEETS	SHEET NO.
*	D7 HMA RESURF 2023-2	CUMBERLAND	15	10
* FAI 70 & FAP 116			CONTRACT NO. 74C05	
ILLINOIS FED. AID PROJECT				

PAVING DETAILS

- HOT-MIX ASPHALT SURFACE REMOVAL, 4 1/4"
- HOT-MIX ASPHALT SURFACE REMOVAL, VARIABLE DEPTH
- HOT-MIX ASPHALT SURFACE REMOVAL, 1 1/2"

STATION	TO	STATION
188+52		189+07
197+96		198+51
388+63		389+18
398+08		398+63



TEMPORARY RAMP DETAILS

REV. - MS

MODEL: Default
 FILE: Mainfile: p:\ulidect-cw_bentley.com\PROJECTS\74C05\CADDData\CAD\sheet\74C05-rt-details.dgn

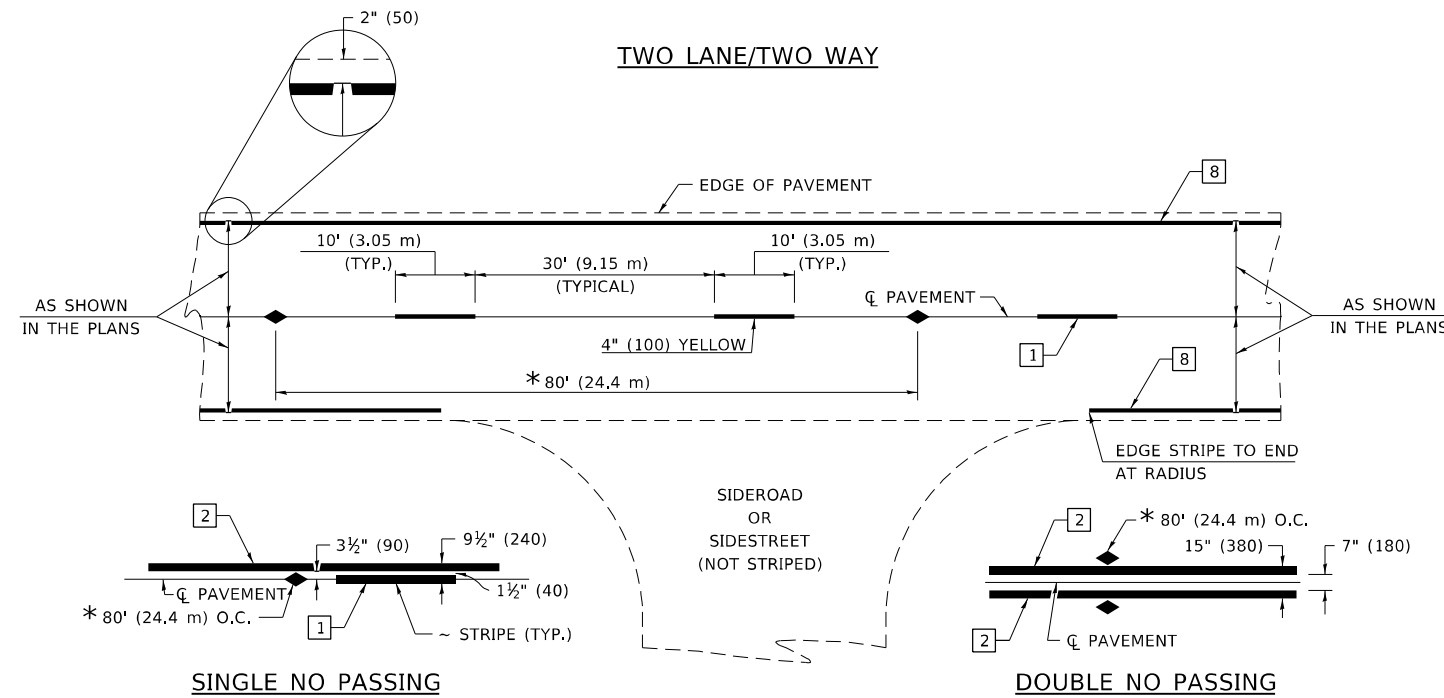
USER NAME = Mona.Steffen	DESIGNED -	REVISED -
	DRAWN -	REVISED -
PLOT SCALE = 100.0000' / in.	CHECKED -	REVISED -
PLOT DATE = 4/5/2023	DATE -	REVISED -

**STATE OF ILLINOIS
DEPARTMENT OF TRANSPORTATION**

PAVING DETAILS

SCALE: SHEET OF SHEETS STA. TO STA.

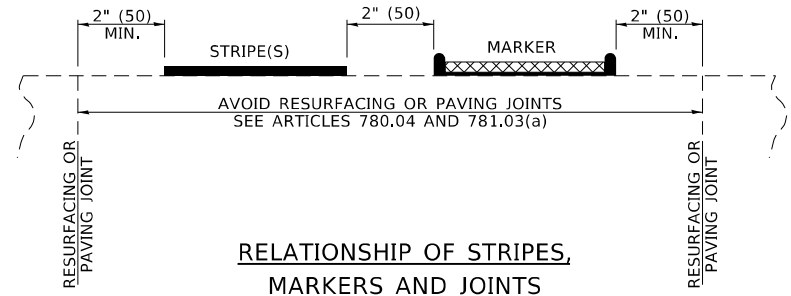
F.A. RTE.	SECTION	COUNTY	TOTAL SHEETS	SHEET NO.
*	D7 HMA RESURF 2023-2	CUMBERLAND	15	11
* FAI 70 & FAP 116			CONTRACT NO. 74C05	
ILLINOIS FED. AID PROJECT				



* REDUCE TO 40' (12.2 m) O.C. ON CURVES WITH POSTED OR ADVISORY SPEEDS OF 45 mph (70 km/h) OR LESS.

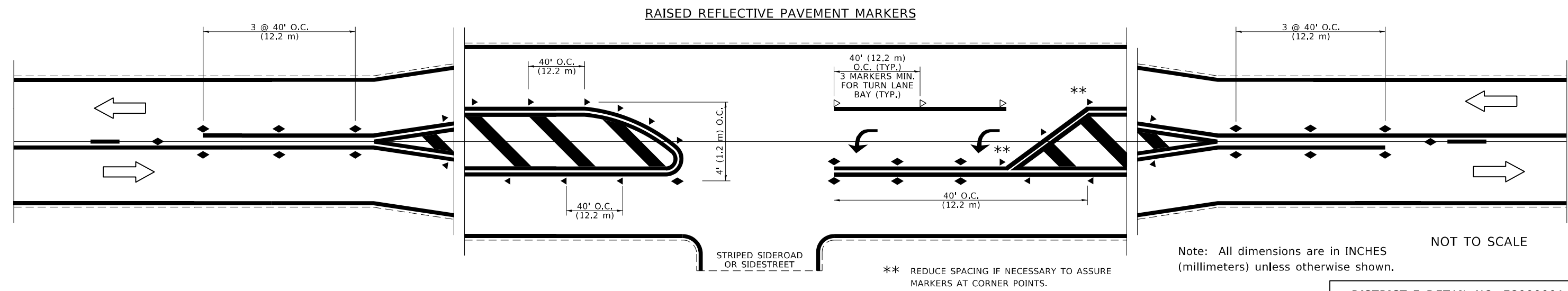
PAVEMENT MARKING LEGEND

1	4" (100) SKIP-DASH (YELLOW)	
2	4" (100) SOLID (YELLOW)	
3	12" (300) DIAGONAL (YELLOW)	
4	4" (100) DOUBLE YELLOW (NARROW)	
5	12" (300) SOLID WHITE	
6	RESERVED	
7	6" (150) SKIP-DASH (WHITE)	
8	4" (100) SOLID (WHITE)	
9	12" (300) DIAGONAL (WHITE)	
10	6" (150) SOLID (WHITE)	
11	24" (600) STOP BAR (WHITE)	
12	8" (200) SOLID (WHITE)	
13	4" (100) PARKING WHITE	



TYPICAL PAVEMENT MARKERS LEGEND

- TWO-WAY AMBER MARKER
- ONE-WAY AMBER MARKER
- ONE-WAY CRYSTAL MARKER



MODEL: Default FILE NAME: p:\ulldat-pw-bentley.com\PW\DOT\Documents\DOT Office\District 7\Projects\74C05\CADDData\CAD\Sheet\74C05-sht-detail.dgn

USER NAME = Mona.Steffen	DESIGNED -	REVISED -
DRAWN -	REVISIONS -	
PLOT SCALE = 100,0000 ' / in.	CHECKED -	REVISED -
PLOT DATE = 4/5/2023	DATE -	REVISED -

**STATE OF ILLINOIS
DEPARTMENT OF TRANSPORTATION**

**PAVEMENT MARKING AND RAISED REFLECTIVE PAVEMENT MARKERS
(RURAL AND URBAN APPLICATIONS)**

SCALE: SHEET 1 OF 4 SHEETS STA. TO STA.

DISTRICT 7 DETAIL NO. 7800001

F.A. RTE.	SECTION	COUNTY	TOTAL SHEETS	SHEET NO.
-	D7 HMA RESURF 2023-2	CUMBERLAND	15	12
* FAI 70 & FAP 116 CONTRACT NO. 74C05				
ILLINOIS FED. AID PROJECT				

