

STATE OF ILLINOIS
DEPARTMENT OF TRANSPORTATION

F & U RTE.	SECTION	COUNTY	TOTAL SHEETS	SHEET NO.
9379	248-PP-2	ST. CLAIR	8	1
		ILLINOIS	CONTRACT NO. 76R73	

FOR INDEX OF SHEETS, SEE SHEET NO. 2

PROPOSED HIGHWAY PLANS

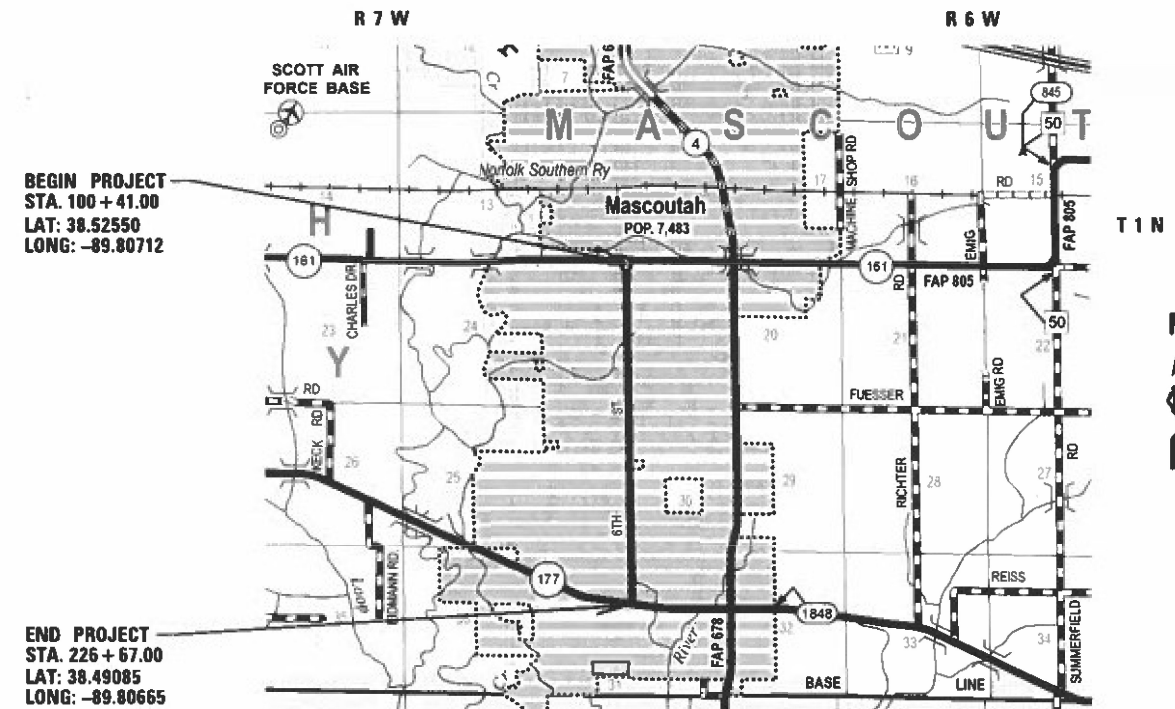
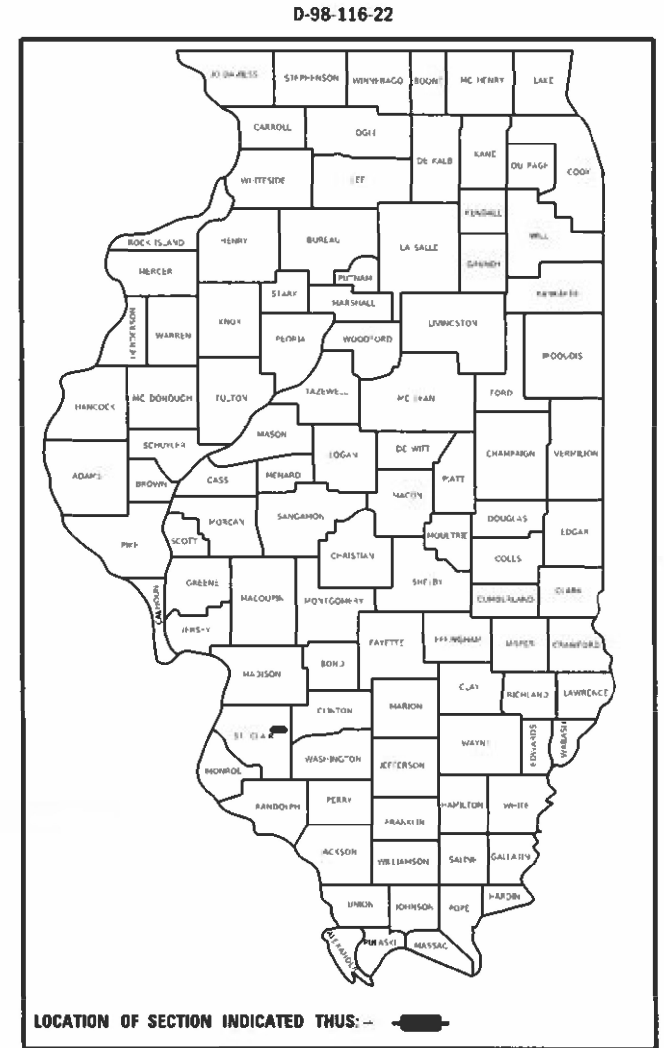
FAU ROUTE 9379 (6TH STREET)
SECTION 248-PP-2
PATCHING-CM
ST. CLAIR COUNTY

C-98-148-22

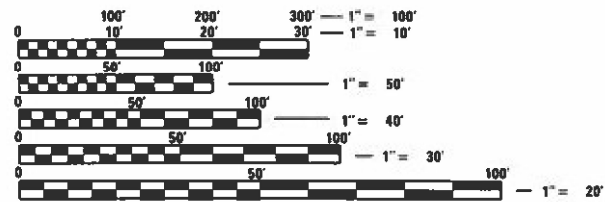
TRAFFIC DATA

2018: 3050 (ACTUAL)
2023: 3100 (ESTIMATED)
2024: 3500 (ESTIMATED)
SU = 3.6% MU = 3.6%

FUNCTIONAL CLASSIFICATION
MAJOR COLLECTOR



LOCATION MAP



FULL SIZE PLANS HAVE BEEN PREPARED USING STANDARD ENGINEERING SCALES. REDUCED SIZED PLANS WILL NOT CONFORM TO STANDARD SCALES. IN MAKING MEASUREMENTS ON REDUCED PLANS, THE ABOVE SCALES MAY BE USED.

J.U.L.I.E.
JOINT UTILITY LOCATION INFORMATION FOR EXCAVATORS
1-800-892-0123
OR 811

PROJECT ENGINEER: BILLIE OWEN
PROJECT MANAGER: MIKE BERG

CONTRACT NO. 76R73

GROSS LENGTH = 12,626 FT. = 2.39 MILE
NET LENGTH = 12,626 FT. = 2.39 MILE

STATE OF ILLINOIS
DEPARTMENT OF TRANSPORTATION

SUBMITTED MARCH 20 2023
Kevin Brown
REGIONAL ENGINEER

May 12, 2023 *John A. Etk*
ENGINEER OF DESIGN AND ENVIRONMENT

May 12, 2023 *Stephen M. Smith*
DIRECTOR OF HIGHWAYS PROJECT IMPLEMENTATION

PRINTED BY THE AUTHORITY
OF THE STATE OF ILLINOIS

INDEX OF SHEETS

- 1 COVER
- 2 HIGHWAY STANDARDS, GENERAL NOTES, & COMMITMENTS
- 3 SUMMARY OF QUANTITIES
- 4-5 TYPICAL SECTIONS
- 6-8 SCHEDULE OF QUANTITIES

HIGHWAY STANDARDS

000001-08	STANDARD SYMBOLS, ABBREVIATIONS AND PATTERNS
001006	DECIMAL OF AN INCH AND OF A FOOT
442101-09	CLASS B PATCHES
701201-05	LANE CLOSURE, 2L, 2W, DAY ONLY, FOR SPEEDS \geq 45 MPH
701301-04	LANE CLOSURE, 2L, 2W SHORT TERM OPERATIONS
701336-07	LANE CLOSURE, 2L, 2W WORK AREAS IN SERIES, FOR SPEEDS \geq 45 MPH
701606-10	URBAN SINGLE LANE CLOSURE, MAULTILANE, 2W WITH MOUNTABLE MEDIAN
701611-01	URBAN HALF ROAD CLOSURE, MULTILANE, 2W WIDTH MOUNTABLE MEDIAN
701901-08	TRAFFIC CONTROL DEVICES
420001-10	PAVEMENT JOINTS
420701-03	PAVEMENT WELDED WIRE REINFORCEMENT
780001-05	TYPICAL PAVEMENT MARKINGS
781001-04	TYPICAL APPLICATIONS RAISED REFLECTIVE PAVEMENT MARKERS

GENERAL NOTES

1. UTILITIES KNOWN TO HAVE FACILITIES WITHIN THE PROJECT AREA:

	<u>ABOVE GROUND</u>	<u>BELOW GROUND</u>
FRONTIER COMMUNICATIONS	X	X
AMEREN ILLINOIS	X	X
AT&T ILLINOIS	X	X
CHARTER COMMUNICATIONS, INC.	X	X
CLEARWAVE COMMUNICATIONS	X	X
EVERSTREAM GOC HOLDING CO., LLC	X	X
CITY OF MASCOUTAH (WATER & SANITARY)		X
CITY OF MASCOUTAH (ELECTRIC)	X	X
MASCOUTAH CUMMUNTY UNIT SCHOOL DISTRICT #19	X	X
METRO	X	X
MID AMERICA ST. LOUIS AIRPORT (WATER & SANITARY)		X
MID AMERICA ST. LOUIS AIRPORT (COMMUNICATION)	X	X
MID AMERICA ST. LOUIS AIRPORT (ELECTRIC)	X	X
SLM WATER COMMISION		X
WINDSTREAM KDL, INC.	X	X

2. THE RESIDENT ENGINEER SHALL VERIFY THE EXISTENCE OF HIGHWAY LIGHTING, INTELLIGENT TRANSPORTATION SYSTEMS (I.T.S.) UTILITIES, AND/OR ELECTRICAL CABLES ASSOCIATED WITH TRAFFIC SIGNALS WITHIN THE PROJECT LIMITS. IF ANY OF THESE EXIST WITHIN THE PROJECT LIMITS, AND IF THESE ITEMS REQUIRE LOCATING, THE CONTRACTOR SHALL BE DIRECTED TO DO SO ACCORDING TO SECTION 803 OF THE STANDARD SPECIFICATIONS. THIS WORK SHALL BE PAID FOR ACCORDING TO ARTICLE 109.04 OF THE STANDARD SPECIFICATIONS.
3. THE DEPARTMENT STRONGLY ENCOURAGES THE PRIME CONTRACTOR AND THEIR APPROVED SUB-CONTRACTORS TO HIRE MINORITY, WOMEN AND DISADVANTAGED INDIVIDUALS FROM ITS FEDERALLY FUNDED HIGHWAY CONSTRUCTION CAREERS TRAINING PROGRAM (HCCTP) TO HELP MEET WORKFORCE AND TRAINEE GOALS. THIS PROGRAM IS TRAINING MINORITIES, WOMEN AND DISADVANTAGED INDIVIDUALS IN HIGHWAY CONSTRUCTION-RELATED SKILLS, E.G., MATH FOR THE TRADES, JOB READINESS, TECHNICAL SKILLS COURSEWORK (CARPENTRY, CONCRETE FLATWORK, BLUEPRINT READING, SITE PLANS, SITE WORK, TOOLS USE, ETC.) AND OSHA 10 HOUR CERTIFICATION, TO PREPARE THEM FOR A CAREER IN THE HIGHWAY CONSTRUCTION TRADES. GRADUATES ARE WELL-TRAINED AND READY TO BECOME PRODUCTIVE ENTRY-LEVEL CONSTRUCTION WORKERS. CONTACT THE DISTRICT 8 EEO OFFICE AT 618-346-3360 AND/OR THE HCCTP COORDINATOR AT 618-874-6528 TO LEARN MORE ABOUT THE PROGRAM AND FOR ASSISTANCE IN MEETING WORKFORCE AND TRAINEE GOALS.

4. NO OVERNIGHT LANE CLOSURES WILL BE PERMITTED.
5. NO SURVEY WAS PERFORMED FOR THIS PROJECT AND THE PLANS WERE CREATED USING MICROFILM AND FIELD MEASUREMENTS.
6. HIGH EARLY STRENGTH CONCRETE FOR PAVEMENT PATCHING WILL BE ALLOWED.
7. THE CONTRACTOR SHALL EXERCISE CAUTION TO NOT DAMAGE ANY DETECTOR LOOPS OR LEAD-IN WIRES. ANY DAMAGE SHALL BE REPAIRED AT THE CONTRACTOR'S EXPENSE. NO ADDITIONAL COMPENSATION WILL BE ALLOWED.
8. FOUR CHANGEABLE MESSAGE SIGNS SHALL BE PROVIDED FOR THIS CONTRACT. THEY SHALL BE PLACED TWO WEEKS PRIOR TO ANY LANE CLOSURE. THE EXACT LOCATIONS SHALL BE DETERMINED BY THE ENGINEER.
9. THE FOLLOWING MIXTURE REQUIREMENTS ARE APPLICABLE FOR THIS PROJECT:

MIXTURE USE	PARTIAL DEPTH PATCHING	
	BINDER	SURFACE
AC/PG	PG 64-22	PG 64-22
DESIGN AIR VOIDS	4.0% @ Ndes=70	4.0% @ Ndes=70
MIX COMPOSITION (Gradation)	IL 19.0	IL 9.5
FRICITION AGG	MIXTURE "B"	MIXTURE "C"
QUALITY MGMT PROGRAM	QC/QA	QC/QA
MatTranDev Required?	no	no

COMMITMENTS

NONE

REV. - MS

FILE NAME =	USER NAME = Default	DESIGNED -	REVISED -	STATE OF ILLINOIS DEPARTMENT OF TRANSPORTATION	HIGHWAY STANDARDS, GENERAL NOTES & COMMITMENTS	F.A.U. RTU.	SECTION	COUNTY	TOTAL SHEETS	SHEET NO.	
pw\idot-pw.bentley.com\PIDOT\Documents\IDOT Offices\District 8\Projects\0876R73\CAD\1\CADsheets\0876R73-sht-pln.dgn		CHECKED -	REVISED -			9379	248PP-2	ST. CLAIR	8	2	
PLOT SCALE = 100.0000' / in.		DATE -	REVISED -			CONTRACT NO. 76R73					
MODELNAME#	PLOT DATE = 3/30/2023					SCALE: _____	SHEET 1 OF 2 SHEETS	STA. _____ TO STA. _____	ILLINOIS FED. AID PROJECT		

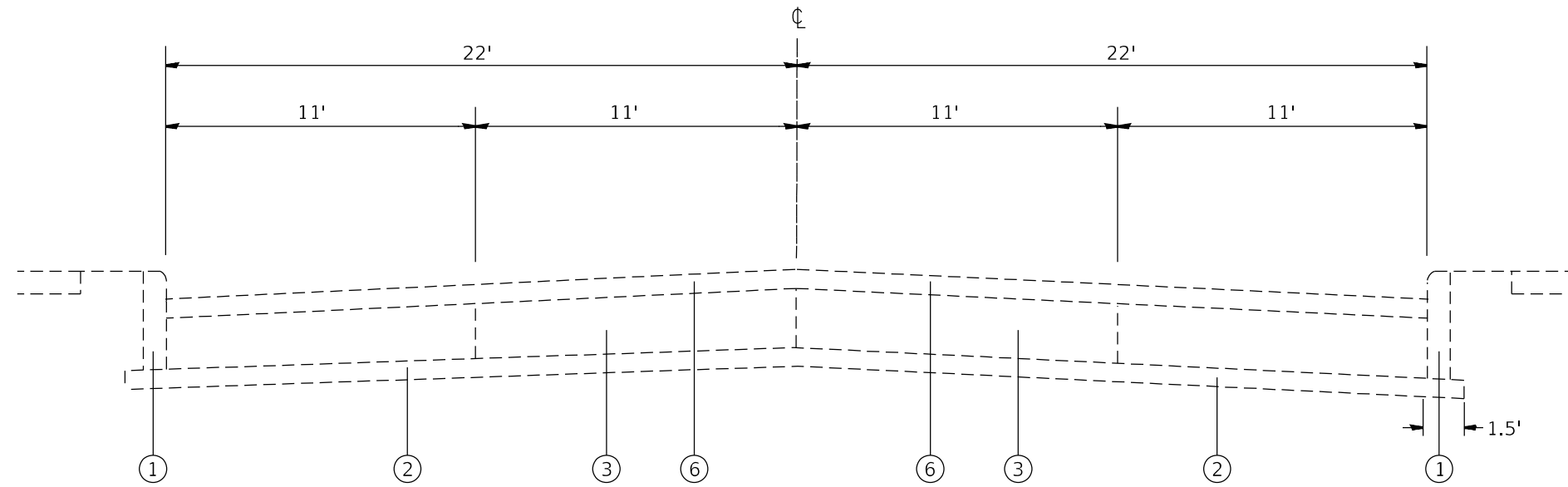
CODE NO.	ITEM	UNIT	TOTAL QUANTITY	CONSTR. CODE	
				100% STATE	
				ROADWAY	URBAN
42000060	WELDED WIRE REINFORCEMENT	SQ YD	256	256	
44201019	CLASS B PATCHES, TYPE II, 14 INCH	SQ YD	1932	1932	
44201023	CLASS B PATCHES, TYPE III, 14 INCH	SQ YD	256	256	
44201299	DOWEL BARS 1 1/2"	EACH	4520	4520	
44213200	SAW CUTS	FOOT	11418	11418	
67100100	MOBILIZATION	L SUM	1	1	
70100450	TRAFFIC CONTROL AND PROTECTION, STANDARD 701201	L SUM	1	1	
70100600	TRAFFIC CONTROL AND PROTECTION, STANDARD 701336	L SUM	1	1	
70102625	TRAFFIC CONTROL AND PROTECTION, STANDARD 701606	L SUM	1	1	
70102634	TRAFFIC CONTROL AND PROTECTION, STANDARD 701611	L SUM	1	1	
70107025	CHANGEABLE MESSAGE SIGN	CAL DA	240	240	
* 78001110	PAINT PAVEMENT MARKING - LINE 4"	FOOT	5985	5985	
* 78100100	RAISED REFLECTIVE PAVEMENT MARKER	EACH	30	30	
X4406060	PARTIAL DEPTH REMOVAL, TYPE I, 6"	SQ YD	286	286	
X4406460	PARTIAL DEPTH REMOVAL, TYPE III, 6"	SQ YD	58	58	

* SPECIALTY ITEM

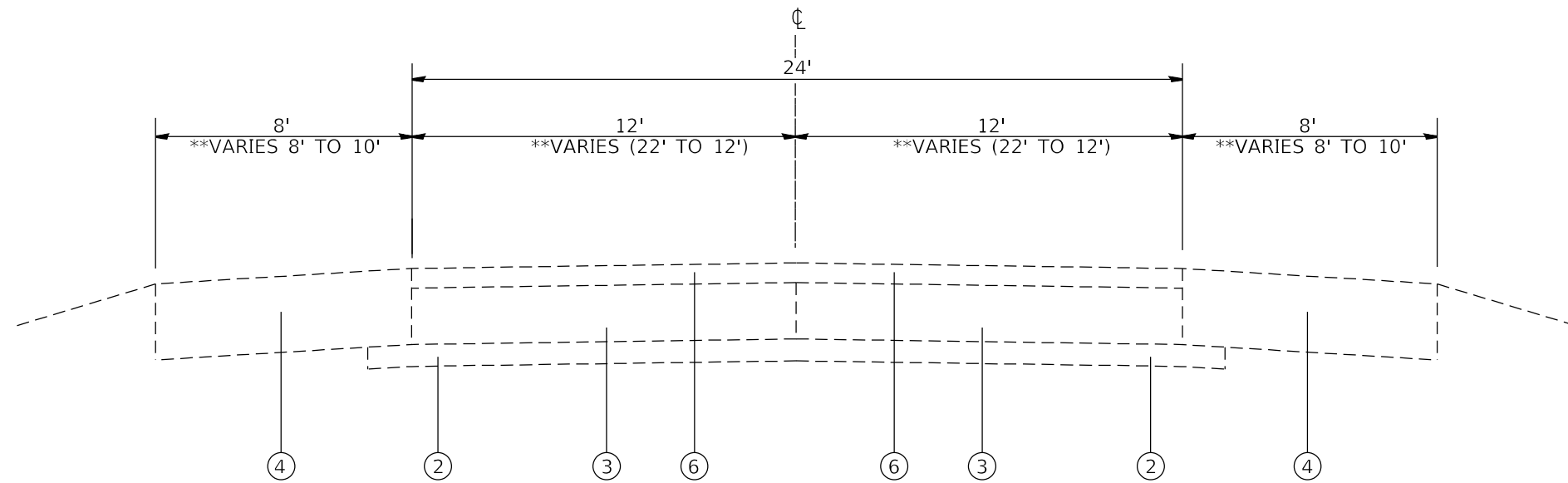
CODE NO.	ITEM	UNIT	TOTAL QUANTITY	CONSTR. CODE	
				100% STATE	
				ROADWAY	URBAN
X4406660	PARTIAL DEPTH REMOVAL, TYPE IV, 6"	SQ YD	1778	1778	
Ø Z0076604	TRAINEES TRAINING PROGRAM GRADUATE	HOUR	500	500	
X4421000	PARTIAL DEPTH PATCHING	TON	693	693	

Ø 0042

REV. - MS



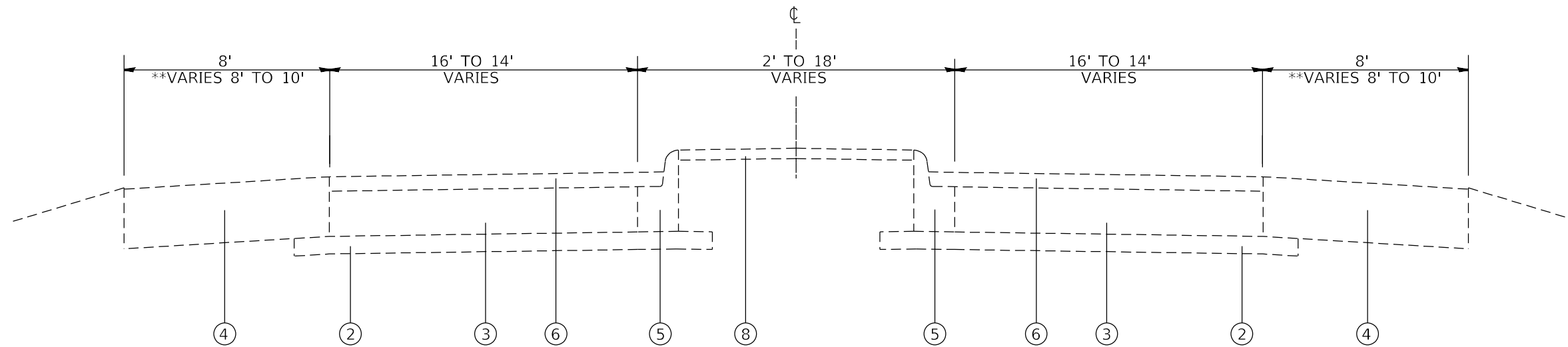
EXISTING TYPICAL SECTION
STA. 100+41 TO STA. 133+32



EXISTING TYPICAL SECTION
** STA. 133+32 TO STA. 137+12
STA. 137+12 TO STA. 220+88

LEGEND

- ① EXISTING CONCRETE CURB
- ② EXISTING STABILIZED SUB BASE, 4"
- ③ EXISTING PORTLAND CEMENT CONCRETE PAVEMENT, 8"
- ④ EXISTING STABILIZED SHOULDER
- ⑤ EXISTING CONCRETE CURB & GUTTER
- ⑥ EXISTING HOT-MIX ASPHALT RESURFACING 6"



EXISTING TYPICAL SECTION

STA 220+88 TO STA. 226+67

LEGEND

- ① EXISTING CONCRETE CURB
- ② EXISTING STABILIZED SUB BASE, 4"
- ③ EXISTING PORTLAND CEMENT CONCRETE PAVEMENT, 8"
- ④ EXISTING STABILIZED SHOULDER
- ⑤ EXISTING CONCRETE CURB & GUTTER
- ⑥ EXISTING HOT-MIX ASPHALT RESURFACING 6"

FILE NAME :	USER NAME = Default	DESIGNED - _____	REVISED - _____	STATE OF ILLINOIS DEPARTMENT OF TRANSPORTATION	TYPICAL SECTIONS			F.A.U. RTU.	SECTION	COUNTY	TOTAL SHEETS	SHEET NO.	
pw:\idot-pw.bentley.com\PWIDOT\Documents\IDOT Offices\District 8\Projects\0876R73\CAD\DRAWINGS\Drawings\0876R73-sht-plan.dgn	PROJECT = 0876R73	CHECKED - _____	REVISED - _____		SCALE: _____	SHEET 2	OF 2	SHEETS	STA. _____	TO STA. _____	ST. CLAIR	8	5
MODELNAME	PLOT SCALE = 100.0000' / in.	DATE - _____	REVISED - _____					CONTRACT NO. 76R73		ILLINOIS FED. AID PROJECT			
	PLOT DATE = 3/30/2023												

CLASS B PATCHING 14"										
LOCATION			CLASS B PATCHING							
			LENGTH	WIDTH	TYPE-II	TYPE-III	SAW CUTS	DOWEL BARS 1 1/2"	WELDED WIRE REINF	PAINT PVT MARKING LINE 4"
MILE PT.	NB/SB	LANE	FOOT	FOOT	SQ YD	SQ YD	FOOT	EACH	SQ YD	FOOT
0.020	NB		8	12	10.67		52	20		8
0.040	SB		8	12	10.67		52	20		8
0.040	NB		15	12		20.00	66	20	20.00	15
0.060	NB		8	12	10.67		52	20		8
0.060	SB		10	12	13.33		56	20		10
0.080	NB		10	12	13.33		56	20		10
0.080	SB		8	12	10.67		52	20		8
0.090	SB		8	12	10.67		52	20		8
0.095	NB		10	12	13.33		56	20		10
0.095	SB		10	12	13.33		56	20		10
0.098	NB		10	12	13.33		56	20		10
0.990	NB		8	12	10.67		52	20		8
0.990	SB		8	12	10.67		52	20		8
0.995	NB		8	12	10.67		52	20		8
0.995	SB		8	12	10.67		52	20		8
0.100	NB		8	12	10.67		52	20		8
0.100	SB		10	12	13.33		56	20		10
0.105	NB		8	12	10.67		52	20		8
0.105	SB		10	12	13.33		56	20		10
0.110	NB		12	12		16.00	60	20	16.00	12
0.110	SB		12	12		16.00	60	20	16.00	12
0.120	NB		10	12	13.33		56	20		10
0.120	SB		10	12	13.33		56	20		10
0.125	NB		8	12	10.67		52	20		8
0.125	SB		8	12	10.67		52	20		8
0.200	NB		8	12	10.67		52	20		8
0.200	SB		8	12	10.67		52	20		8
0.210	NB		15	12		20.00	66	20	20.00	15
0.210	SB		15	12		20.00	66	20	20.00	15
0.220	NB		10	12	13.33		56	20		10
0.220	SB		10	12	13.33		56	20		10
0.240	NB		8	12	10.67		52	20		8
0.240	SB		8	12	10.67		52	20		8
0.300	NB		8	12	10.67		52	20		8
0.300	SB		8	12	10.67		52	20		8
0.320	NB		12	12	16.00		60	20		12
0.320	SB		12	12	16.00		60	20		12
0.340	NB		8	12	10.67		52	20		8
0.340	SB		8	12	10.67		52	20		8
0.360	NB		8	12	10.67		52	20		8
0.360	SB		8	12	10.67		52	20		8
0.380	NB		10	12	13.33		56	20		10
0.380	SB		10	12	13.33		56	20		10
0.405	NB		6	12	8.00		48	20		6
0.405	SB		6	12	8.00		48	20		6
0.410	NB		5	12	6.67		46	20		5
0.410	SB		10	12	13.33		56	20		10
0.430	NB		8	12	10.67		52	20		8
0.430	SB		8	12	10.67		52	20		8
0.490	NB		8	12	10.67		52	20		8
0.490	SB		15	12		20.00	66	20	20.00	15
0.500	NB		8	12	10.67		52	20		8
0.500	SB		8	12	10.67		52	20		8
0.540	NB		8	12	10.67		52	20		8
0.540	SB		8	12	10.67		52	20		8
0.560	NB		6	12	8.00		48	20		6
0.560	SB		6	12	8.00		48	20		6
0.580	NB		15	12		20.00	66	20	20.00	15
0.580	SB		15	12		20.00	66	20	20.00	15
0.590	NB		8	12	10.67		52	20		8
0.590	SB		8	12	10.67		52	20		8
0.595	NB		6	12	8.00		48	20		6
0.595	SB		6	12	8.00		48	20		6
0.600	SB		8	12	10.67		52	20		8
0.610	SB		6	12	8.00		48	20		6
SUB TOTAL					633	152	3518	1300	152	589

CLASS B PATCHING 14"										
LOCATION			CLASS B PATCHING							
			LENGTH	WIDTH	TYPE-II	TYPE-III	SAW CUTS	DOWEL BARS 1 1/2"	WELDED WIRE REINF	PAINT PVT MARKING LINE 4"
MILE PT.	NB/SB	LANE	FOOT	FOOT	SQ YD	SQ YD	FOOT	EACH	SQ YD	FOOT
0.620	SB		6	12	8.00			48		6
0.630	SB		6	12	8.00			48		6
0.650	SB		6	12	8.00			48		6
0.655	NB		6	12	8.00			48		6
0.655	SB		6	12	8.00			48		6
0.740	NB		6	12	8.00			48		6
0.740	SB		8	12	10.67			52		8
0.745	NB		6	12	8.00			48		6
0.745	SB		6	12	8.00			48		6
0.800	NB		6	12	8.00			48		6
0.800	SB		8	12	10.67			52		8
0.810	NB		8	12	10.67			52		8
0.810	SB		8	12	10.67			52		8
0.820	NB		8	12	10.67			52		8
0.820	SB		8	12	10.67			52		8
0.830	NB		6	12	8.00			48		6
0.830	SB		6	12	8.00			48		6
0.840	NB		15	12		20.00	66	20	20.00	15
0.840	SB		15	12		20.00	66	20	20.00	15
0.910	NB		6	12	8.00			48		6
0.910	SB		6	12	8.00			48		6
0.930	NB		6	12	8.00			48		6
0.930	SB		6	12	8.00			48		6
1.000	NB		6	12	8.00			48		6
1.000	SB		6	12	8.00			48		6
1.300	NB		6	12	8.00			48		6
1.300	SB		6	12	8.00			48		6
1.110	NB		6	12	8.00			48		6
1.110	SB		6	12	8.00			48		6
1.200	NB		6	12	8.00			48		6
1.200	SB		6	12	8.00			48		6
1.260	NB		6	12	8.00			48		6
1.260	SB		6	12	8.00			48		6
1.280	NB		10	12	13.33			56		10
1.280	SB		10	12	13.33			56		10
1.320	NB		6	12	8.00			48		6
1.320	SB		6	12	8.00			48		6
1.360	NB		6	12	8.00			48		6
1.360	SB		6	12	8.00			48		6
1.380	NB		6	12	8.00			48		6
1.350	SB		6	12	8.00			48		6
1.390	NB		6	12	8.00			48		6
1.390	SB		6	12	8.00			48		6
1.395	NB		6	12	8.00			48		6
1.395	SB		6	12	8.00			48		6
1.396	NB		6	12	8.00			48		6
1.396	SB		6	12	8.00			48		6
1.400	NB		6	12	8.00			48		6
1.400	SB		6	12	8.00			48		6
1.410	NB		6	12	8.00			48		6
1.410	SB		6	12	8.00			48		6
1.430	NB		6	12	8.00			48		6
1.430	SB		6	12	8.00			48		6
1.450	NB		6	12	8.00			48		6
1.450	SB		6	12	8.00			48		6
1.500	NB		10	12	13.33			56		10
1.500	SB		10	12	13.33			56		10
1.520	NB		6	12	8.00			48		6
1.520	SB		6	12	8.00			48		6
1.540	NB		6	12	8.00			48		6
1.540	SB		6	12	8.00			48		6
1.570	NB		6	12	8.00			48		6
1.570	SB		6	12	8.00			48		6
1.575	NB		6	12	8.00			48		6
1.575	SB		6	12	8.00			48		6
SUB TOTAL					541	40	3212	1300	40	436

CLASS B PATCHING 14"										
LOCATION			CLASS B PATCHING							
			LENGTH	WIDTH	TYPE-II	TYPE-III	SAW CUTS	DOWEL BARS 1 1/2"	WELDED WIRE REINF	PAINT PVT MARKING LINE 4"
MILE PT.	NB/SB	LANE	FOOT	FOOT	SQ YD	SQ YD	FOOT	EACH	SQ YD	FOOT
1.600	NB		6	12	8.00		48	20		6
1.600	SB		6	12	8.00		48	20		6
1.630	NB		6	12	8.00		48	20		6
1.630	SB		6	12	8.00		48	20		6
1.630	NB		6	12	8.00		48	20		6
1.630	SB		6	12	8.00		48	20		6
1.635	NB		6	12	8.00		48	20		6
1.635	SB		6	12	8.00		48	20		6
1.698	NB		6	12	8.00		48	20		6
1.690	SB		6	12	8.00		48	20		6
1.696	SB		6	12	8.00		48	20		6
1.705	NB	RL	6	12	8.00		48	20		6
1.705	NB	LL	6	12	8.00		48	20		6
1.705	SB	RL	6	12	8.00		48	20		6
1.705	SB	LL	6	12	8.00		48	20		6
1.720	NB	RL	6	12	8.00		48	20		6
1.720	NB	LL	6	12	8.00		48	20		6
1.720	SB	RL	6	12	8.00		48	20		6
1.720	SB	LL	6	12	8.00		48	20		6
1.740	NB	RL	6	12	8.00		48	20		6
1.740	NB	LL	6	12	8.00		48	20		6
1.740	SB	RL	6	12	8.00		48	20		6
1.740	SB	LL	6	12	8.00		48	20		6
1.760	NB	RL	6	12	8.00		48	20		6
1.760	NB	LL	6	12	8.00		48	20		6
1.760	SB	RL	6	12	8.00		48	20		6
1.760	SB	LL	6	12	8.00		48	20		6
1.780	NB	RL	6	12	8.00		48	20		6
1.780	NB	LL	6	12	8.00		48	20		6
1.780	SB	RL	6	12	8.00		48	20		6
1.780	SB	LL	6	12	8.00		48	20		6
1.785	NB	RL	6	12	8.00		48	20		6
1.785	NB	LL	6	12	8.00		48	20		6
1.785	SB	RL	6	12	8.00		48	20		6
1.785	SB	LL	6	12	8.00		48	20		6
1.800	NB	RL	6	12	8.00		48	20		6
1.800	NB	LL	6	12	8.00		48	20		6
1.800	SB	RL	6	12	8.00		48	20		6
1.800	SB	LL	6	12	8.00		48	20		6
1.840	NB	RL	6	12	8.00		48	20		6
1.840	NB	LL	6	12	8.00		48	20		6
1.840	SB	RL	6	12	8.00		48	20		6
1.840	SB	LL	6	12	8.00		48	20		6
1.850	NB	RL	6	12	8.00		48	20		6
1.850	NB	LL	6	12	8.00		48	20		6
1.850	SB	RL	6	12	8.00		48	20		6
1.850	SB	LL	6	12	8.00		48	20		6
1.880	NB	RL	12	12		16.00	60	20	16.00	12
1.880	NB	LL	12	12		16.00	60	20	16.00	12
1.880	SB	RL	12	12		16.00	60	20	16.00	12
1.880	SB	LL	12	12		16.00	60	20	16.00	12
1.900	NB	RL	6	12	8.00		48	20		6
1.900	NB	LL	6	12	8.00		48	20		6
1.900	SB	RL	6	12	8.00		48	20		6
1.900	SB	LL	6	12	8.00		48	20		6
1.910	NB	RL	6	12	8.00		48	20		6
1.910	NB	LL	6	12	8.00		48	20		6
1.910	SB	RL	6	12	8.00		48	20		6
SUB TOTAL					416	64	2736	1120	64	360

CLASS B PATCHING 14"										
LOCATION			CLASS B PATCHING							
			LENGTH	WIDTH	TYPE-II	TYPE-III	SAW CUTS	DOWEL BARS 1 1/2"	WELDED WIRE REINF	PAINT PVT MARKING LINE 4"
MILE PT.	NB/SB	LANE	FOOT	FOOT	SQ YD	SQ YD	FOOT	EACH	SQ YD	FOOT
1.910	SB	LL	6	12	8.00		48	20		6
1.950	NB	RL	6	12	8.00		48	20		6
1.950	NB	LL	6	12	8.00		48	20		6
1.950	SB	RL	6	12	8.00		48	20		6
1.950	SB	LL	6	12	8.00		48	20		6
1.970	NB	RL	6	12	8.00		48	20		6
1.970	NB	LL	6	12	8.00		48	20		6
1.970	SB	RL	6	12	8.00		48	20		6
1.970	SB	LL	6	12	8.00		48	20		6
1.980	NB	RL	6	12	8.00		48	20		6
1.980	NB	LL	6	12	8.00		48	20		6
1.980	SB	RL	6	12	8.00		48	20		6
1.980	SB	LL	6	12	8.00		48	20		6
1.990	NB	RL	6	12	8.00		48	20		6
1.990	NB	LL	6	12	8.00		48	20		6
1.990	SB	RL	6	12	8.00		48	20		6
1.990	SB	LL	6	12	8.00		48	20		6
2.110	SB	LL	6	12	8.00		48	20		6
2.130	NB	RL	6	12	8.00		48	20		6
2.130	NB	LL	6	12	8.00		48	20		6
2.130	SB	RL	6	12	8.00		48	20		6
2.130	SB	LL	6	12	8.00		48	20		6
2.180	NB	RL	10	12	13.33		56	20		10
2.180	NB	LL	10	12	13.33		56	20		10
2.180	SB	RL	8	12	10.67		52	20		8
2.180	SB	LL	8	12	10.67		52	20		8
2.185	NB	RL	6	12	8.00		48	20		6
2.185	NB	LL	6	12	8.00		48	20		6
2.185	SB	RL	6	12	8.00		48	20		6
2.185	SB	LL	6	12	8.00		48	20		6
2.210	NB	RL	6	12	8.00		48	20		6
2.210	NB	LL	6	12	8.00		48	20		6
2.215	NB	RL	8	12	10.67		52	20		8
2.215	NB	LL	8	12	10.67		52	20		8
2.230	NB	RL	6	12	8.00		48	20		6
2.230	NB	LL	6	12	8.00		48	20		6
2.250	NB	RL	6	12	8.00		48	20		6
2.250	NB	LL	6	12	8.00		48	20		6
2.250	SB	RL	6	12	8.00		48	20		6
2.250	SB	LL	6	12	8.00		48	20		6
SUB TOTAL					341		1952	800		250
GRAND TOTAL					1932	256	11418	4520	256	1635

NOTE: AN ESTIMATED QUANTITY OF 30 RAISED REFLECTIVE PAVEMENT MARKERS HAS BEEN INCLUDED IN THE PLANS. THESE SHALL BE USED TO REPLACE ANY MARKERS REMOVED OR HARMED DURING PATCHING OPERATIONS.

PARTIAL DEPTH PATCHING									
LOCATION			LENGTH	WIDTH	PARTIAL DEPTH REMOVAL TYPE I, 6"	PARTIAL DEPTH REMOVAL TYPE III, 6"	PARTIAL DEPTH REMOVAL TYPE IV, 6"	PARTIAL DEPTH PATCHING	PAINT PVT MARKING LINE 4"
			FOOT	FOOT	SQ YDS		SQ YDS	TON	FOOT
1.680	NB		130	4		57.78		19.41	130
1.693	SB		8	4	3.56			1.00	8
1.700	NB		2000	4			888.89	298.67	2000
1.700	SB		2000	4			888.89	298.67	2000
2.000	NB	RL	4	12	5.33			1.79	4
2.000	NB	LL	4	12	5.33			1.79	4
2.000	SB	RL	4	12	5.33			1.79	4
2.000	SB	LL	4	12	5.33			1.79	4
2.100	NB	RL	4	12	5.33			1.79	4
2.100	NB	LL	4	12	5.33			1.79	4
2.100	SB	RL	4	12	5.33			1.79	4
2.100	SB	LL	4	12	5.33			1.79	4
2.110	NB	RL	4	12	5.33			1.79	4
2.110	NB	LL	4	12	5.33			1.79	4
2.110	SB	RL	4	12	5.33			1.79	4
2.120	SB	RL	4	12	5.33			1.79	4
2.120	SB	LL	4	12	5.33			1.79	4
2.160	NB	RL	4	12	5.33			1.79	4
2.160	NB	LL	4	12	5.33			1.79	4
2.160	SB	RL	4	12	5.33			1.79	4
2.160	SB	LL	4	12	5.33			1.79	4
2.170	NB	RL	4	12	5.33			1.79	4
2.170	NB	LL	4	12	5.33			1.79	4
2.170	SB	RL	4	12	5.33			1.79	4
2.170	SB	LL	4	12	5.33			1.79	4
2.190	SB	RL	4	12	5.33			1.79	4
2.190	SB	LL	4	12	5.33			1.79	4
2.195	NB	RL	4	12	5.33			1.79	4
2.195	NB	LL	4	12	5.33			1.79	4
2.195	SB	RL	4	12	5.33			1.79	4
2.195	SB	LL	4	12	5.33			1.79	4
2.200	NB	RL	4	12	5.33			1.79	4
2.200	NB	LL	4	12	5.33			1.79	4
2.200	SB	RL	4	12	5.33			1.79	4
2.200	SB	LL	4	12	5.33			1.79	4
2.210	NB	RL	4	12	5.33			1.79	4
2.210	NB	LL	4	12	5.33			1.79	4
2.210	SB	RL	4	12	5.33			1.79	4
2.210	SB	LL	4	12	5.33			1.79	4
2.210	SB	RL	4	12	5.33			1.79	4
2.210	SB	LL	4	12	5.33			1.79	4
2.215	SB	RL	4	12	5.33			1.79	4
2.215	NB	LL	4	12	5.33			1.79	4
2.230	SB	RL	4	12	5.33			1.79	4
2.230	NB	LL	4	12	5.33			1.79	4
2.240	NB	RL	4	12	5.33			1.79	4
2.240	NB	LL	4	12	5.33			1.79	4
2.240	SB	RL	4	12	5.33			1.79	4
2.240	SB	LL	4	12	5.33			1.79	4
3.000	NB	RL	4	12	5.33			1.79	4
3.000	NB	LL	4	12	5.33			1.79	4
3.000	SB	RL	4	12	5.33			1.79	4
3.000	SB	LL	4	12	5.33			1.79	4
3.100	NB	RL	4	12	5.33			1.79	4
3.100	NB	LL	4	12	5.33			1.79	4
3.100	SB	RL	4	12	5.33			1.79	4
3.100	SB	LL	4	12	5.33			1.79	4
TOTAL					206	50	1770	713	4350