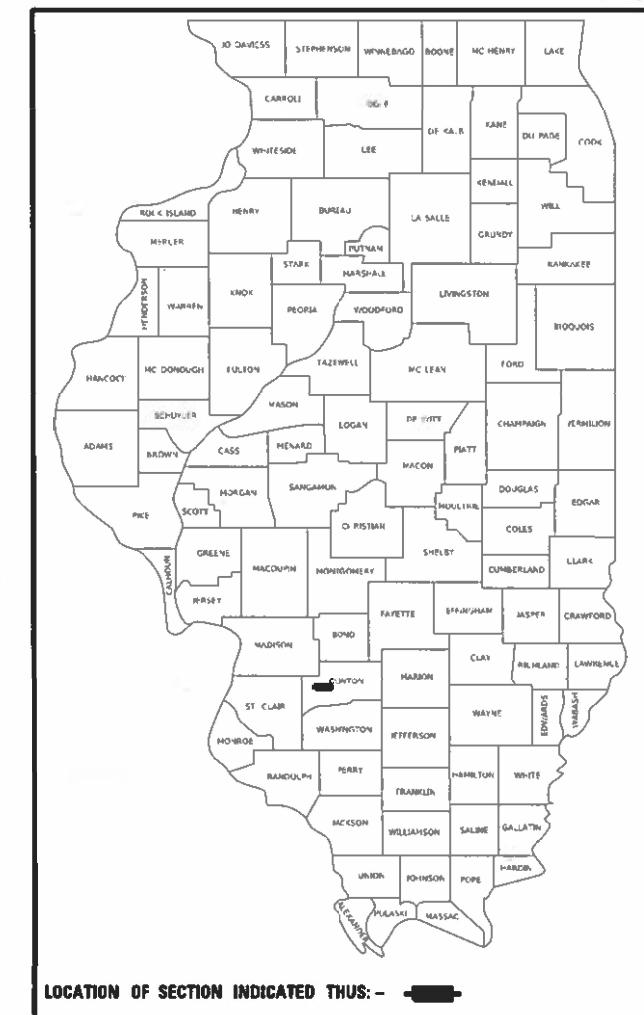


STATE OF ILLINOIS
DEPARTMENT OF TRANSPORTATION

F.A.P. RTE.	SECTION	COUNTY	TOTAL SHEETS	SHEET NO.
327	14-14-RS-7	CLINTON	6	1
		ILLINOIS	CONTRACT NO. 76R74	

D-98-117-22



FOR INDEX OF SHEETS, SEE SHEET NO. 2

PROPOSED HIGHWAY PLANS

FAP ROUTE 327 (US 050)
SECTION 14-14-RS-7
RESURFACING
CLINTON COUNTY

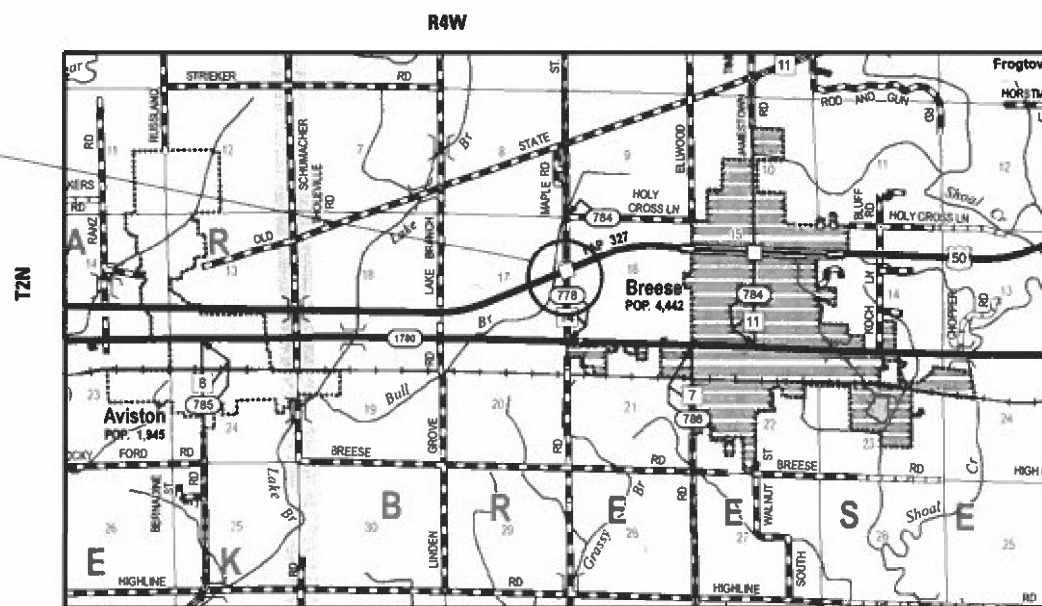
C-98-149-22

TRAFFIC DATA

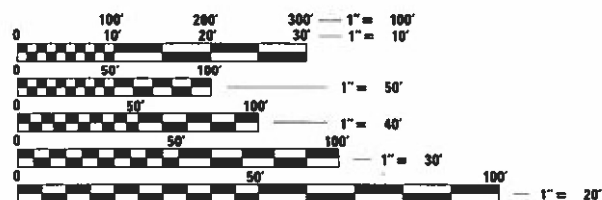
2020: 2250 (ACTUAL)
2023: 2300 (ESTIMATED)
2024: 2600 (ESTIMATED)
SU = 8.0% MU = 5.3%

FUNCTIONAL CLASSIFICATION
OTHER PRINCIPAL ARTERIAL

PROJECT LOCATION
LAT: 38.61811
LONG: -89.55411



LOCATION MAP



FULL SIZE PLANS HAVE BEEN PREPARED USING STANDARD ENGINEERING SCALES. REDUCED SIZED PLANS WILL NOT CONFORM TO STANDARD SCALES. IN MAKING MEASUREMENTS ON REDUCED PLANS, THE ABOVE SCALES MAY BE USED.

J.U.L.I.E.
JOINT UTILITY LOCATION INFORMATION FOR EXCAVATORS
1-800-892-0123
OR 811

PROJECT ENGINEER BILLIE OWEN
PROJECT MANAGER MIKE BERG

GROSS LENGTH = 1,029 FT. = 0.195 MILE
NET LENGTH = 1,029 FT. = 0.195 MILE

CONTRACT NO. 76R74

STATE OF ILLINOIS
DEPARTMENT OF TRANSPORTATION

SUBMITTED MARCH 28 20 23
Kevin H. Brown
REGIONAL ENGINEER

May 12, 2023 [Signature]
ENGINEER OF DESIGN AND ENVIRONMENT

May 12, 2023 [Signature]
DIRECTOR OF HIGHWAYS PROJECT IMPLEMENTATION

PRINTED BY THE AUTHORITY
OF THE STATE OF ILLINOIS

INDEX OF SHEETS

- 1 COVER
- 2 HIGHWAY STANDARDS, GENERAL NOTES, & COMMITMENTS
- 3 SUMMARY OF QUANTITIES
- 4 TYPICAL SECTIONS
- 5 SCHEDULE OF QUANTITIES
- 6 DETAILS

7. THE FOLLOWING MIXTURE REQUIREMENTS ARE APPLICABLE FOR THIS PROJECT:

MIXTURE USE	SURFACE	PATCHING
AC/PG	PG 64-22	PG 64-22
DESIGN AIR VOIDS	4.0% @ Ndes=70	4.0% @ Ndes=70
MIX COMPOSITION (Gradation)	IL 9.5	IL 19.0
FRICITION AGG	MIXTURE "C"	MIXTURE "B"
QUALITY MGMT PROGRAM	QC/QA	QC/QA
MatTranDev Required?	no	no

HIGHWAY STANDARDS

- 000001-08 STANDARD SYMBOLS, ABBREVIATIONS AND PATTERNS
- 001006 DECIMAL OF AN INCH AND OF A FOOT
- 701201-05 LANE CLOSURE, 2L, 2W, DAY ONLY, FOR SPEEDS \geq 45 MPH
- 701301-04 LANE CLOSURE, 2L, 2W SHORT TERM OPERATIONS
- 701306-04 LANE CLOSURE, 2L, 2W SLOW MOVING OPERATIONS DAY ONLY, FOR SPEEDS \geq 45 MPH
- 701336-07 LANE CLOSURE, 2L, 2W WORK AREAS IN SERIES, FOR SPEEDS \geq 45 MPH
- 701901-08 TRAFFIC CONTROL DEVICES
- 442201-03 CLASS C AND D PATCHES
- 780001-05 TYPICAL PAVEMENT MARKINGS
- 781001-04 TYPICAL APPLICATIONS RAISED REFLECTIVE PAVEMENT MARKERS

COMMITMENTS

NONE

GENERAL NOTES

1. UTILITIES KNOWN TO HAVE FACILITIES WITHIN THE PROJECT AREA:

	ABOVE GROUND	BELOW GROUND
CLINTON COUNTY ELCTRIC COOP., INC.	X	X
AT&T ILLINOIS	X	X
ST. ROSE PUBLIC WATER DISTRICT		X
CLEARWAVE COMMUNICATIONS	X	X
CITY OF BREESE (WATER & SANITARY)		X
CITY OF BREESE (ELECTRIC)	X	X

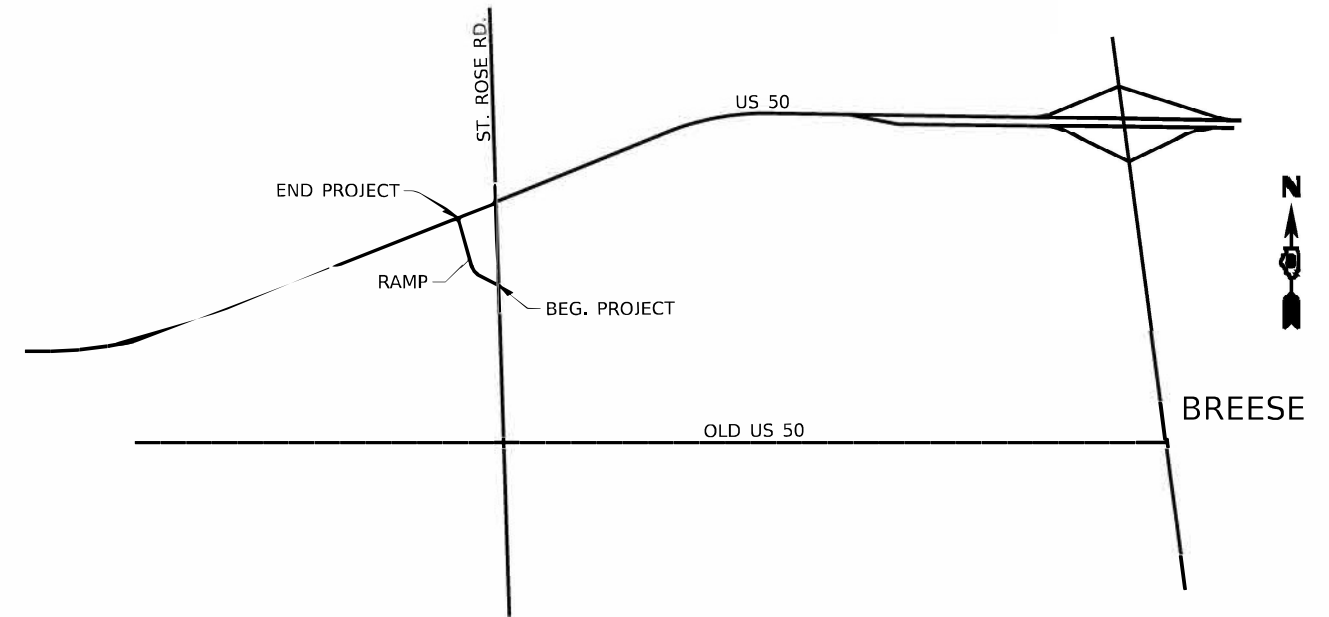
2. THE RESIDENT ENGINEER SHALL VERIFY THE EXISTENCE OF HIGHWAY LIGHTING, INTELLIGENT TRANSPORTATION SYSTEMS (I.T.S.) UTILITIES, AND/OR ELECTRICAL CABLES ASSOCIATED WITH TRAFFIC SIGNALS WITHIN THE PROJECT LIMITS. IF ANY OF THESE EXIST WITHIN THE PROJECT LIMITS, AND IF THESE ITEMS REQUIRE LOCATING, THE CONTRACTOR SHALL BE DIRECTED TO DO SO ACCORDING TO SECTION 803 OF THE STANDARD SPECIFICATIONS. THIS WORK SHALL BE PAID FOR ACCORDING TO ARTICLE 109.04 OF THE STANDARD SPECIFICATIONS.

3. NO SURVEY WAS PERFORMED FOR THIS PROJECT AND THE PLANS WERE CREATED USING MICROFILM AND FIELD MEASUREMENTS.

4. NO OVERNIGHT LANE CLOSURES WILL BE PERMITTED.

5. FOUR CHANGEABLE MESSAGE SIGNS SHALL BE PROVIDED FOR THIS CONTRACT. THEY SHALL BE PLACED TWO WEEKS PRIOR TO ANY LANE CLOSURE. THE EXACT LOCATIONS SHALL BE DETERMINED BY THE ENGINEER.

6. THE PROPOSED PAVEMENT MARKING SHALL MATCH THE LOCATIONS OF THE EXISTING PAVEMENT MARKING, AS DIRECTED BY THE ENGINEER.



LOCATION MAP
(NOT TO SCALE)

REV. - MS

FILE NAME =	USER NAME = Default	DESIGNED -	REVISED -	STATE OF ILLINOIS DEPARTMENT OF TRANSPORTATION	HIGHWAY STANDARDS, GENERAL NOTES, LOCATION MAP & COMMITMENTS	F.A.U. RTU.	SECTION	COUNTY	TOTAL SHEETS	SHEET NO.
pw\dot-pw.bentley.com\PI\DOT\Documents\1\DOT Offices\Dist.1.ct.8\Projects\0876R74\0876R74\CAD\Sheets\0876R74-ght-pln.dgn		REVISIONS	REVISIONS			9379	248PP-2	ST. CLAIR	6	2
PLOT SCALE = 100.0000' / in.	CHECKED -	REVISIONS	REVISIONS			CONTRACT NO. 76R74				
MODELNAME#	PLOT DATE = 3/30/2023	DATE -	REVISIONS			SCALE: _____	SHEET 1 OF 1 SHEETS	STA. _____ TO STA. _____	ILLINOIS FED. AID PROJECT	

100% STATE

CODE NO.	ITEM	UNIT	TOTAL QUANTITY	CONSTR. CODE	
				ROADWAY	
				0005	RURAL
40600290	BITUMINOUS MATERIALS (TACK COAT)	POUND	179	179	
40600370	LONGITUDINAL JOINT SEALANT	FOOT	1029	1029	
40604052	HOT-MIX ASPHALT SURFACE COURSE, 1L-9.5, MIX "C", N70	TON	300	300	
44000155	HOT-MIX ASPHALT SURFACE REMOVAL, 1 1/2"	SQ YD	3878	3878	
44201781	CLASS D PATCHES, TYPE III, 11 INCH	SQ YD	21	21	
44201783	CLASS D PATCHES, TYPE IV, 11 INCH	SQ YD	440	440	
48102100	AGGREGATE WEDGE SHOULDER, TYPE B	TON	53	53	
48203100	HOT-MIX ASPHALT SHOULDERS	TON	26	26	
67100100	MOBILIZATION	L SUM	1	1	
70100450	TRAFFIC CONTROL AND PROTECTION, STANDARD 701201	L SUM	1	1	
70100460	TRAFFIC CONTROL AND PROTECTION, STANDARD 701306	L SUM	1	1	
70100600	TRAFFIC CONTROL AND PROTECTION, STANDARD 701336	L SUM	1	1	
70107025	CHANGEABLE MESSAGE SIGN	CAL DA	56	56	
70300100	SHORT TERM PAVEMENT MARKING	FOOT	206	206	

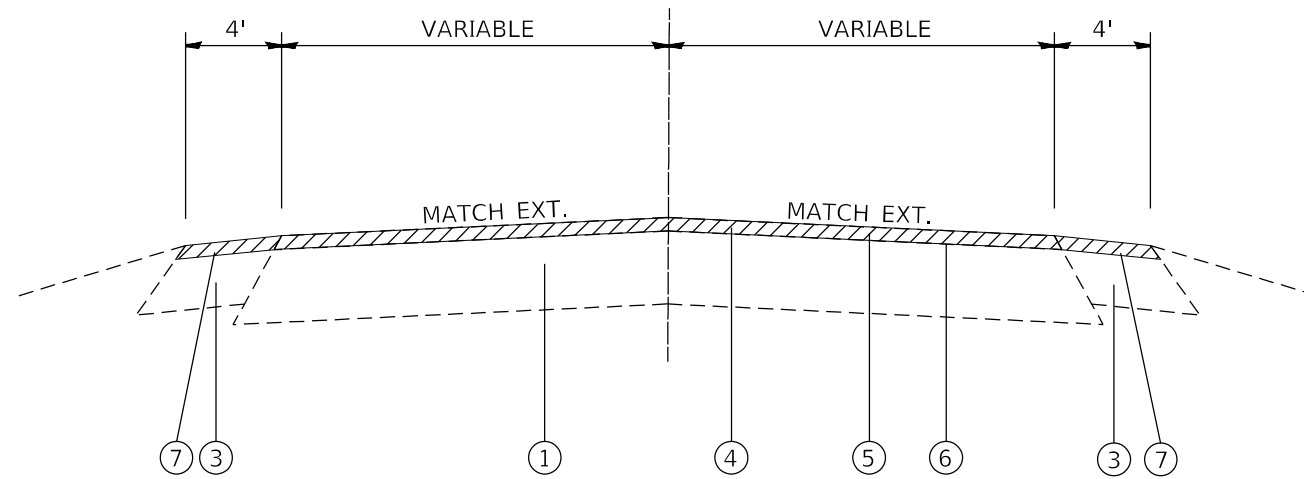
100% STATE

CODE NO.	ITEM	UNIT	TOTAL QUANTITY	CONSTR. CODE	
				ROADWAY	
				0005	RURAL
70300150	SHORT TERM PAVEMENT MARKING REMOVAL	SQ FT	69	69	
70300221	TEMPORARY PAVEMENT MARKING - LINE 4" - PAINT	FOOT	4210	4210	
70300281	TEMPORARY PAVEMENT MARKING - LINE 24" - PAINT	FOOT	56	56	
* 78000200	THERMOPLASTIC PAVEMENT MARKING - LINE 4"	FOOT	4210	4210	
* 78000650	THERMOPLASTIC PAVEMENT MARKING - LINE 24"	FOOT	56	56	
* 78100100	RAISED REFLECTIVE PAVEMENT MARKER	EACH	13	13	
78300200	RAISED REFLECTIVE PAVEMENT MARKER REMOVAL	EACH	13	13	

* SPECIALTY ITEM

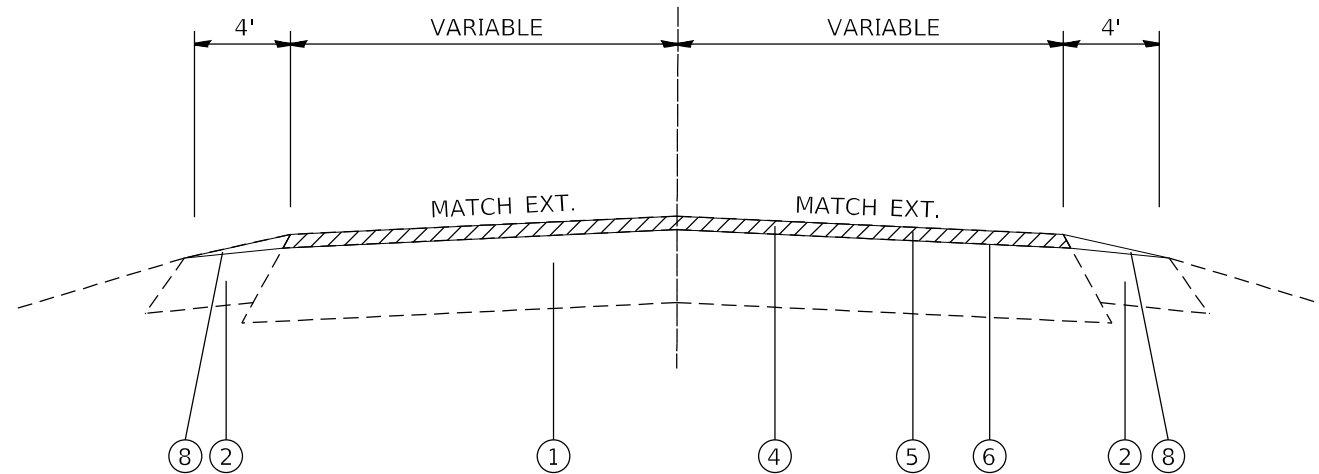
REV. - MS

FILE NAME =	USER NAME = Default	DESIGNED -	REVISED -	STATE OF ILLINOIS DEPARTMENT OF TRANSPORTATION	SUMMARY OF QUANTITIES			F.A.P. RTU.	SECTION	COUNTY	TOTAL SHEETS	SHEET NO.
pw\idot-pw.bentley.com\PIDOT\Document	\\IDOT\Offices\Dist\ct. 8\Projects\0876R74\0876R74\CAD\Sheets\0876R74-ght-pln.dgn	CHECKED -	REVISED -					327	14-14-RS-7	CLINTON	6	3
PLOT SCALE = 100.0000' / 1in.	DATE -	REVISED -						CONTRACT NO. 76R74				
PLOT DATE = 3/30/2023	DATE -	REVISED -						ILLINOIS FED. AID PROJECT				



PROPOSED TYPICAL SECTION

STA. 0+16.00 TO STA. 01+81.00
 STA. 8+90.00 TO STA. 10+45.00



PROPOSED TYPICAL SECTION

STA. 1+81.00 TO STA. 8+90.00

LEGEND

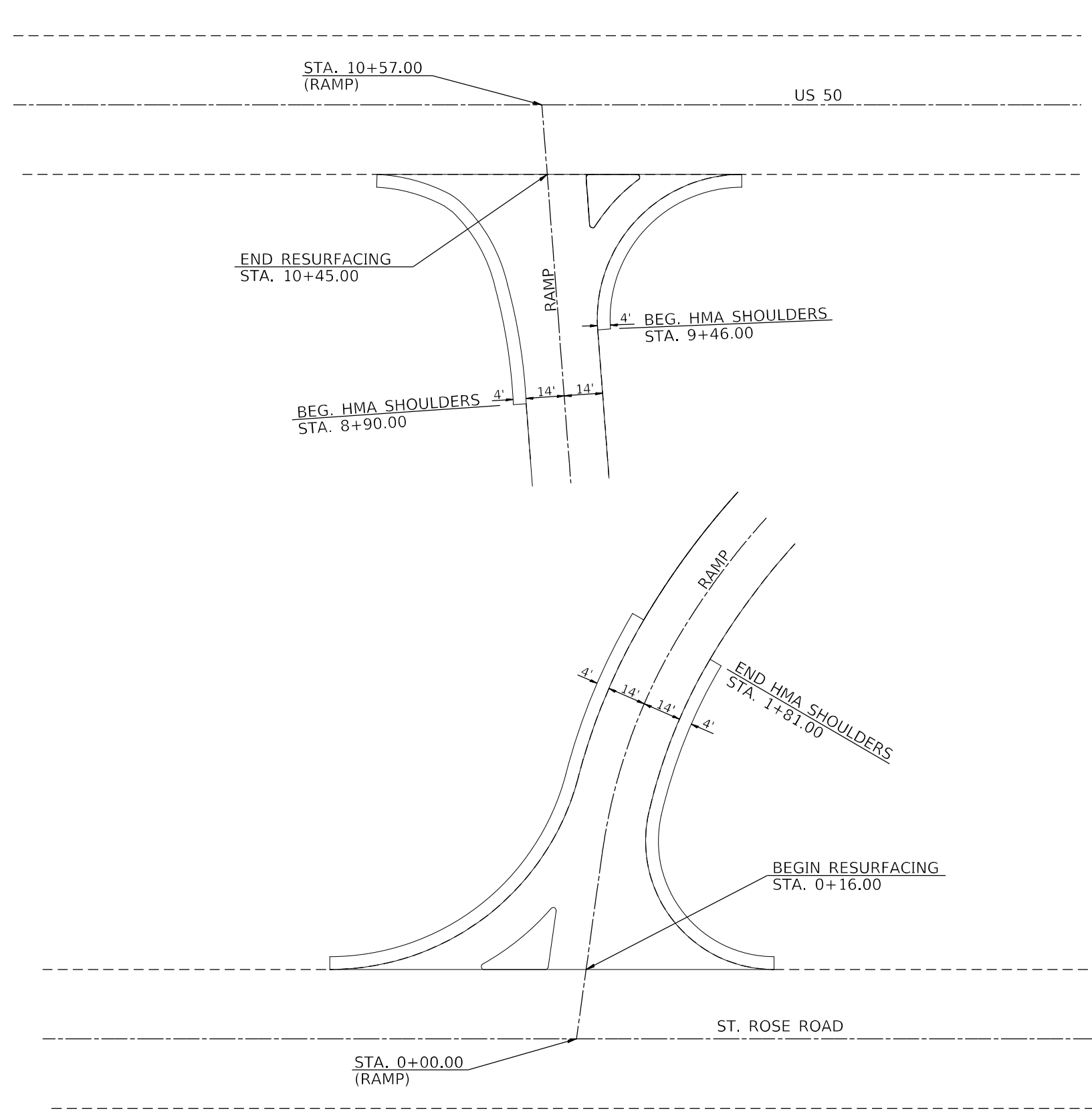
- ① EXISTING HOT-MIX ASPHALT PAVEMENT, 9 1/2"
- ② EXISTING AGGREGATE SHOULDER, TYPE B, 6"
- ③ EXISTING HMA SHOULDER, 6"
- ④ PROPOSED HOT-MIX ASPHALT SURFACE REMOVAL, 1 1/2"
- ⑤ PROPOSED HOT-MIX ASPHALT SURFACE COURSE, 1 1/2"
- ⑥ PROPOSED BITUMINOUS MATERIAL (TACK COAT)
- ⑦ PROPOSED HOT-MIX ASPHALT SHOULDER, 1 1/2"
- ⑧ PROPOSED AGGREGATE WEDGE SHOULDER, TYPE B

RESURFACING SCHEDULE						
LOCATION		AREA	HMA SURFACE REMOVAL 1.5"	BITUMINOUS MATERIAL (TACK COAT)	HMA SURFACE COURSE 1.5"	LONGITUDINAL JOINT SEALANT
		SQYD	SQ YD	LBS	TONS	FT
0+16.00	1+81.00	880.00	880.00	44.00	73.92	165.00
1+81.00	4+63.00	752.00	752.00	37.60	63.17	282.00
4+63.00	8+90.00	1138.67	1138.67	56.93	95.65	427.00
8+90.00	10+45.00	800.00	800.00	40.00	67.20	155.00
TOTAL		3571	3571	179	300	1029

SHOULDER SCHEDULE						
LOCATION		LT/RT	AREA	HMA SURFACE REMOVAL 1.5"	HMA SHOULDERS	AGGREGATE WEDGE SHOULDER TYPE B
			SQ FT	SQ YD	TON	TON
0+16.00	1+81.00	LT	115.6	115.6	9.7	
0+16.00	1+81.00	RT	73.3	73.3	6.2	
1+81.00	9+16.00	LT	326.7			26.2
1+81.00	9+46.00	RT	340.0			27.3
8+90.00	10+45.00	LT	73.3	73.3	6.2	
9+71.00	10+45.00	RT	44.4	44.4	3.7	
TOTAL				307	26	53

PAVEMENT MARKING SCHEDULE											
LOCATION			LENGTH	WIDTH	THERMOPLASTIC/TEMPORARY			SHORT - TERM PAVEMENT MARKING	SHORT - TERM PAVEMENT MARKING REMOVAL	RAISED REFLECTIVE PAVEMENT MARKING REMOVAL	RAISED REFLECTIVE PAVEMENT MARKING
					4" LINE		24" LINE				
					WHITE SOLID	YELLOW SOLID	WHITE SOLID				
			FOOT	FOOT	FOOT	FOOT	FOOT	FOOT	SQFT	EACH	EACH
0+16.00	TO	1+81.00	165.0	35.3	330	330		33	10.989	2	2
1+81.00	TO	4+63.00	282.0	35.3	564	564		56.4	18.7812	4	4
4+63.00	TO	8+90.00	427.0	48.0	854	854		85.4	28.4382	5	5
8+90.00	TO	10+45.00	155.0	35.0	310	310		31	10.323	2	2
MEDIANS											
		0+17.00				50					
		10+23.00				44					
STOP BARS											
		0+19.00 (TURN LANE)						14			
		+32.00						14			
		10+34.00						14			
		10+62 (TURN LANE)						14			
SUB - TOTAL					2152	2058					
TOTAL			1029	153.5	4210		56	206	69	13	13

CLASS D PAVEMENT PATCHING SCHEDULE						
LOCATION		CLASS D PAVEMENT PATCHING				
		LENGTH	WIDTH	TYPE-III	TYPE-IV	
MILE PT.	NB/SB	FOOT	FOOT	SQ YD	SQ YD	
0.167	SB	16	12	21.33		
0.196	SB	260	12		346.67	
0.232	NB	20	12		26.67	
0.263	NB	50	12		66.67	
TOTAL				21	440	



FILE NAME =	USER NAME = Default	DESIGNED - _____	REVISED - _____	STATE OF ILLINOIS DEPARTMENT OF TRANSPORTATION	RESURFACING DETAILS		F.A.P. RTU.	SECTION	COUNTY	TOTAL SHEETS	SHEET NO.	
pw:\idot-pw.bentley.com\PIDOT\Documents\IDOT Offices\District 8\Projects\0876R74\CDRAWING\Drawings\0876R74-sht-p1en.dgn	CDRAWING\Drawings\0876R74-sht-p1en.dgn	REVISIONS	REVISIONS		327	14-14-RS-7	CLINTON	6	6	CONTRACT NO. 76R74		
\$MODELNAME\$	PLOT SCALE = 100.0000' / in.	CHECKED - _____	REVISED - _____		SCALE: _____	SHEET 1	OF 1	SHEETS	STA. _____	TO STA. _____	ILLINOIS FED. AID PROJECT	
	PLOT DATE = 3/30/2023	DATE - _____	REVISED - _____									