

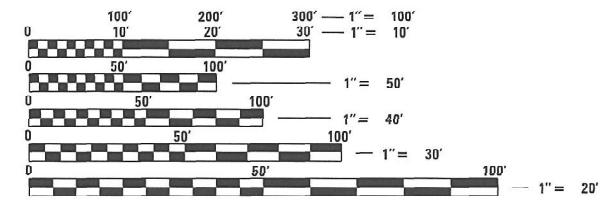
06-16-2023 LETTING ITEM 112

**INDEX OF SHEETS**

- 1. COVER SHEET
- 2. GENERAL NOTES
- 3. SUMMARY OF QUANTITIES
- 4-5. RAISED REFLECTIVE PAVEMENT MARKER REPLACEMENT LOCATIONS

**STATE STANDARDS**

- 701301-04 LANE CLOSURE 2L,2W, SHORT TIME OPERATIONS
- 701311-03 LANE CLOSURE 2L,2W MOVING OPERATIONS-DAY ONLY
- 701426-09 LANE CLOSURE, MULTILANE,INTERMITTENT OR MOVING OPERATION FOR SPEEDS ≥ 45MPH
- 701427-05 LANE CLOSURE, MULTILANE,INTERMITTENT OR MOVING OPERATION FOR SPEEDS ≤ 40MPH
- 701901-08 TRAFFIC CONTROL DEVICES



FULL SIZE PLANS HAVE BEEN PREPARED USING STANDARD ENGINEERING SCALES. REDUCED SIZED PLANS WILL NOT CONFORM TO STANDARD SCALES. IN MAKING MEASUREMENTS ON REDUCED PLANS, THE ABOVE SCALES MAY BE USED.

J.U.L.I.E.  
 JOINT UTILITY LOCATION INFORMATION FOR EXCAVATORS  
 1-800-892-0123  
 OR 811

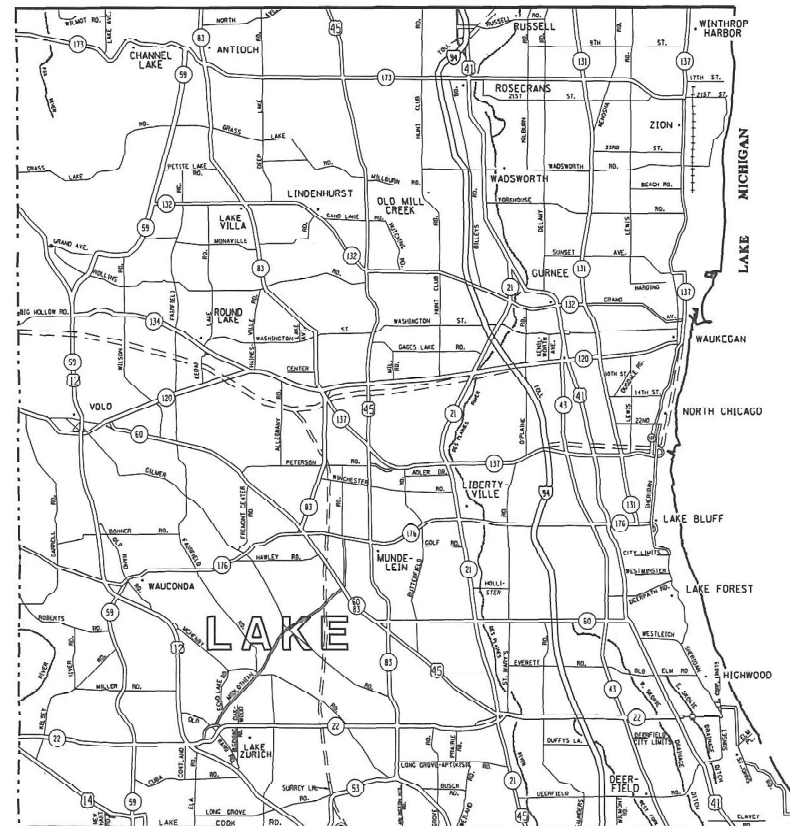
CONTRACT NO. 46626

STATE OF ILLINOIS  
 DEPARTMENT OF TRANSPORTATION

**PROPOSED  
 HIGHWAY PLANS**

VARIOUS ROUTES  
 D 1 REFLECTOR REPL 24-08  
 RAISED REFLECTOR REPLACEMENT  
 LAKE COUNTY

M-60-008-24



F.A. RTE.	SECTION	COUNTY	TOTAL SHEETS	SHEET NO.
	D 1 REFLECTOR REPL 24-08	LAKE	5	1
		ILLINOIS	CONTRACT NO. 46626	



STATE OF ILLINOIS  
 DEPARTMENT OF TRANSPORTATION

SUBMITTED MARCH 15, 2023  
[Signature]  
 REGIONAL ENGINEER

May 12, 2023 [Signature]  
 ENGINEER OF DESIGN AND ENVIRONMENT

May 12, 2023 [Signature]  
 DIRECTOR OF HIGHWAYS PROJECT IMPLEMENTATION

PRINTED BY THE AUTHORITY OF THE STATE OF ILLINOIS

## GENERAL NOTES

The Department may remove and not install markers in certain locations at the engineer's discretion.

The Department may install markers in certain locations that did previously have markers at the engineer's discretion.

The locations of the repair areas shall be determined by the engineer.

No material should be left on or near the roadway.

Removal of damaged materials will include loading, hauling and disposal.

MODEL: Default  
FILE NAME: S:\S\Contract\CAD\CoverSheets for Contracts.dgn

USER NAME = David.Gonzalez22	DESIGNED -	REVISED -
	DRAWN -	REVISED -
PLOT SCALE = 102.2614 ' / in.	CHECKED -	REVISED -
PLOT DATE = 3/14/2023	DATE -	REVISED -

**STATE OF ILLINOIS  
DEPARTMENT OF TRANSPORTATION**

**GENERAL NOTES**

SCALE: SHEET 2 OF 5 SHEETS STA. TO STA.

F.A. RTE.	SECTION	COUNTY	TOTAL SHEETS	SHEET NO.
	D1 REFLECTOR REPL 24-08	LAKE	5	2
CONTRACT NO. 46626				
ILLINOIS FED. AID PROJECT				

CODE NO.	ITEM	UNIT	100% STATE URBAN 0021 QUANTITY
78100100	RAISED REFLECTIVE PAVEMENT MARKER	EACH	17,531
78100300	REPLACEMENT REFLECTOR	EACH	58,438
78300200	RAISED REFLECTIVE PAVEMENT MARKER REMOVAL	EACH	17,531

MODEL: Detail  
FILE NAME: S:\S\Contract\SCAD\CoverSheets for Contract.dgn

USER NAME = David.Gonzalez2	DESIGNED -	REVISED -	<b>STATE OF ILLINOIS DEPARTMENT OF TRANSPORTATION</b>	<b>SUMMARY OF QUANTITIES</b>				F.A. RTE.	SECTION	COUNTY	TOTAL SHEETS	SHEET NO.
PLOT SCALE = 102,2614' / in.	DRAWN -	REVISED -						D1 REFLECTOR REPL 24-08	LAKE	5	3	
PLOT DATE = 3/14/2023	CHECKED -	REVISED -		SCALE:	SHEET 3 OF 5 SHEETS	STA.	TO STA.	ILLINOIS FED. AID PROJECT		CONTRACT NO. 46626		
	DATE -	REVISED -										

DISTRICT 1 RAISED REFLECTIVE PAVEMENT MARKERS REPLACEMENT LIST

ROUTE	FROM (WEST/SOUTH LIMIT)	TO (EAST/NORTH LIMIT)	TOTAL	Y/Y	Y/O	W/O
US-45	IL-83	Woodlawn Dr	1,248	420	230	598
IL-60	IL-83 (West End)	Diamond Lake Rd (W/O US-45)	1,064	173	253	638
IL-83	Lake Cook Rd	US-45	2,245	131	59	2,055
Barrington Rd (IL-59)	US-12	IL-176	78	49	0	29
IL-131	IL-120	Sunset Ave	1,781	617	192	972
IL-131	Sunset Ave	IL-173	1,096	577	271	248
IL-131	IL-173	Wisconsin State Line	585	222	231	132
IL-137	O'Plaine Rd	Sheridan Rd	1,825	33	50	1,742
IL-137 (Boddy East Thompson Expy)	IL-137 (West Leg)	22nd St	279	0	0	279
IL-137	22nd St	Genesse St	1,077	510	77	490
IL-173	Lake-McHenry County Line	US-45	1,961	1,268	394	299
IL-173	US-45	US-41	863	387	193	283
IL-173	US-41	IL-131	689	464	157	68
IL-173	IL-131	IL-137/Sheridan Rd	690	443	122	125
IL-22	US-14	US-12	1,207	736	271	200
IL-43	Atkinson Rd	IL-137	707	10	0	697
IL-43	IL-137	Pulaski Memorial	1,102	160	138	804
IL-59	Lake Cook Rd	IL-22	673	385	136	152
IL-120	IL-134	W/O Almond Rd (4 Lane)	1,434	606	501	327
IL-132	IL-83	US-45	507	174	64	269
IL-132	IL-59	IL-83	571	379	141	51
IL-134	US-12	IL-120	1,238	839	260	139
IL-137	IL-83	Butterfield Rd	1,006	365	261	380
IL-137	Butterfield Rd	O'Plaine Rd	1,775	233	468	1,074
IL-21	Washington St	US-41	673	268	114	291
IL-21	US-45	IL-60	1,689	308	279	1,102
IL-21	IL-60	IL-137	2,549	487	392	1,670
IL-21	IL-137	Washington St	1,305	0	0	1,305

MODEL: Default  
FILE NAME: S:\S\Contract\CAD\CoverSheets for Contract.sjgn

USER NAME = David.Gonzalez2	DESIGNED -	REVISED -	<b>STATE OF ILLINOIS DEPARTMENT OF TRANSPORTATION</b>	<b>RAISED REFLECTIVE PAVEMENT MARKER REPLACEMENT LOCATIONS</b>			F.A. RTE.	SECTION	COUNTY	TOTAL SHEETS	SHEET NO.
PLOT SCALE = 102.2614' / in.	DRAWN -	REVISED -						D1 REFLECTOR REPL 24-08	LAKE	5	4
PLOT DATE = 3/14/2023	CHECKED -	REVISED -		SCALE:	SHEET 4 OF 5 SHEETS	STA.	TO STA.	ILLINOIS FED. AID PROJECT CONTRACT NO. 46626			
	DATE -	REVISED -									

