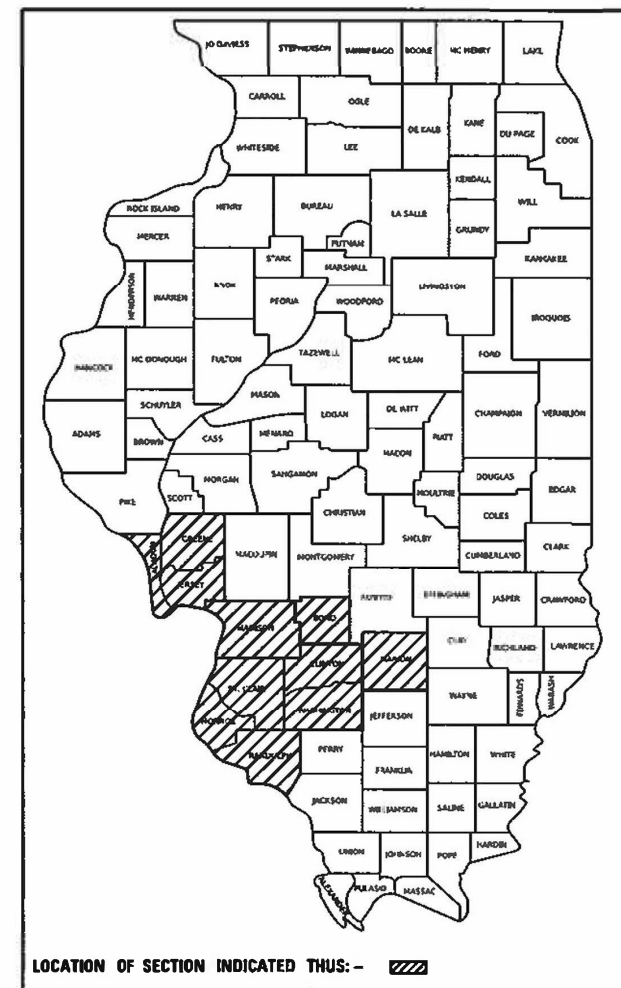


STATE OF ILLINOIS
DEPARTMENT OF TRANSPORTATION

F.A.P. RTE.	SECTION	COUNTY	TOTAL SHEETS	SHEET NO.
VAR	DIST 8 GUARDRAIL 2024-1	VARIOUS	12	1
		ILLINOIS	CONTRACT NO. 76R53	

D-98-096-22

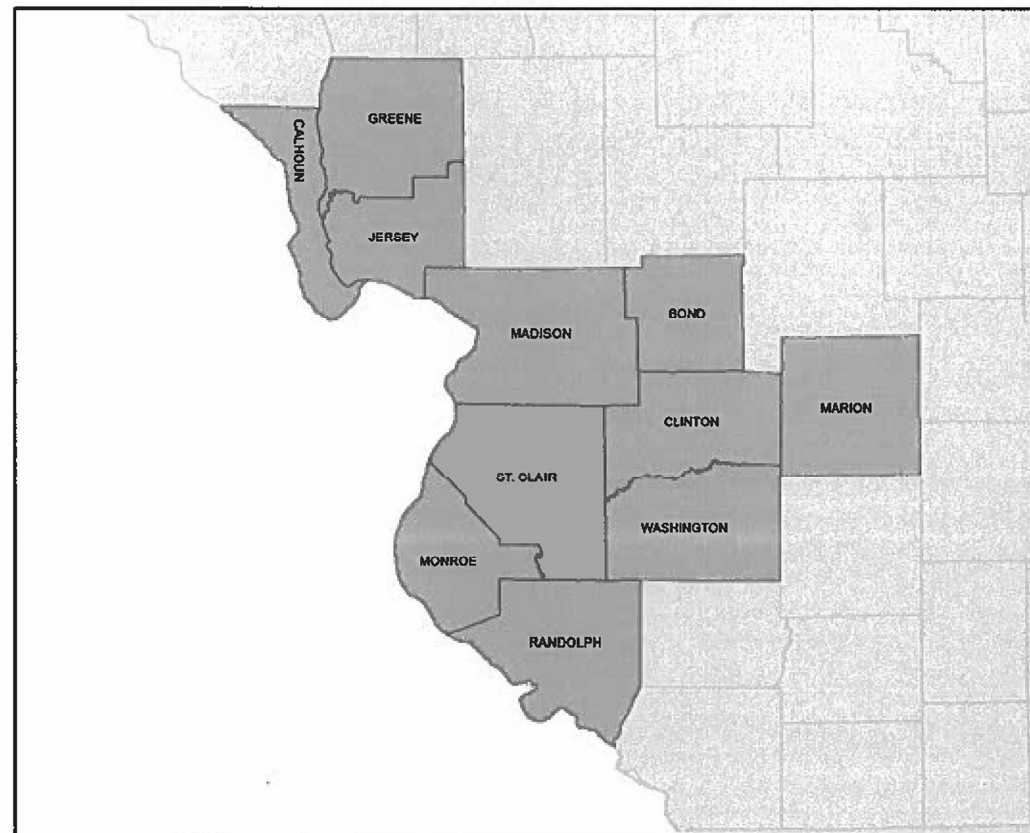


FOR INDEX OF SHEETS, SEE SHEET NO. 2

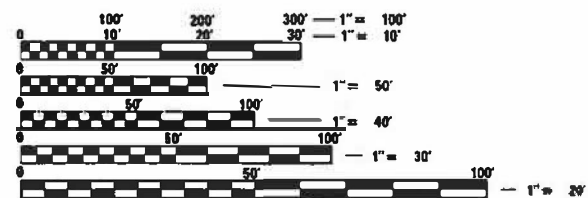
**PROPOSED
HIGHWAY PLANS**

**VARIOUS ROUTES
SECTION DIST 8 GUARDRAIL 2024-1
PROJECT COVD-DA7M(526)
GUARDRAIL & CABLE MEDIAN REPAIR
VARIOUS COUNTIES**

C-98-128-22



NOT TO SCALE



FULL SIZE PLANS HAVE BEEN PREPARED USING STANDARD ENGINEERING SCALES. REDUCED SIZED PLANS WILL NOT CONFORM TO STANDARD SCALES. IN MAKING MEASUREMENTS ON REDUCED PLANS, THE ABOVE SCALES MAY BE USED.

J.U.L.I.E.
JOINT UTILITY LOCATION INFORMATION FOR EXCAVATION
1-800-892-0123
OR 811

PROJECT ENGINEER: CHERYL KEPLAR
SQUAD CONTACT: TONI MANN

CONTRACT NO. 76R53

STATE OF ILLINOIS
DEPARTMENT OF TRANSPORTATION

SUBMITTED March 20 23
[Signature]
REGIONAL ENGINEER

May 12, 2023 [Signature]
ENGINEER OF DESIGN AND ENVIRONMENT

May 12, 2023 [Signature]
DIRECTOR OF HIGHWAYS PROJECT IMPLEMENTATION

**PRINTED BY THE AUTHORITY
OF THE STATE OF ILLINOIS**

- INDEX OF SHEETS
1. COVER SHEET
 2. INDEX OF SHEETS, HIGHWAY STANDARDS, GENERAL NOTES, AND COMMITMENTS
 - 3.-5. SUMMARY OF QUANTITIES
 6. HIGH TENSION CABLE LOCATION MAP
 - 7.-12. GUARDRAIL DETAILS

GENERAL NOTES

1. BEFORE ORDERING THE IMPACT ATTENUATORS, THE CONTRACTOR MUST CONTACT THE OPERATIONS FIELD ENGINEER AT (618) 346-3279 OR (618) 346-3233 TO RECEIVE APPROVAL OF THE PROPOSED INSTALLATION.
2. ALL WORK IS TO BE REPLACED IN KIND OR AS INDICATED ON THE CONTRACT PLANS AND PROVISIONS.
3. NO MATERIAL SHALL BE LEFT ON OR NEAR THE ROADWAY DURING NON-WORKING HOURS.
4. ANY NECESSARY TRAFFIC CONTROL WILL BE PROVIDED BY THE CONTRACTOR; APPROPRIATE STANDARDS ARE LISTED IN THE PLANS AND CONTRACT DOCUMENTS.
5. ALL REFLECTORS SHALL BE PLACED AT THE DISCRETION OF THE ENGINEER. COST OF REFLECTORS TO BE INCLUDED IN THE GUARDRAIL PAY ITEMS.
6. ILLINOIS STATE LAW REQUIRES A 48-HOUR NOTICE TO BE GIVEN TO UTILITIES BEFORE DIGGING. FIELD MARKING OF FACILITIES MAY BE OBTAINED BY CONTACTING J.U.L.I.E. (PHONE 800-892-0123) OR FOR NON-MEMBERS, THE UTILITY COMPANY DIRECTLY.
7. WHEN NO WORK IS BEING PERFORMED, THE FLAGGERS WILL NOT BE REQUIRED. IF THE FLAGGERS ARE NOT PRESENT, THE FLAGGER SIGNS SHALL BE REMOVED OR COVERED.
8. PRIOR TO ORDERING ANY MATERIALS, THE CONTRACTOR SHALL CONFIRM THE TYPES AND SPECIFIC MANUFACTURER FOR THE GUARDRAIL AND CABLE REPAIRS REQUIRED.
9. 45 AND 55 MPH SIGNS ARE INCLUDED IN ALL INTERSTATE LANE CLOSURES. IF THE LANE CLOSURE DURATION IS LESS THAN 4 HOURS, THE 45 AND 55 MPH SIGNS ARE NOT REQUIRED.
10. NO OVERNIGHT LANE CLOSURES WILL BE ALLOWED.
11. ARTICLE 701.20 OF THE STANDARD SPECIFICATIONS DISCUSSES AN ADJUSTED UNIT PRICE. NO ADJUSTMENTS SHALL BE MADE TO THE TRAFFIC CONTROL PAY ITEMS FOR THIS CONTRACT.
12. THE CONTRACTOR SHALL BE ADVISED THAT THE GUARDRAIL PAY ITEMS INCLUDED IN THE PLANS MAY BE USED TO REPLACE/REPAIR SPBGR AND TRAFFIC BARRIER TERMINALS FOR EITHER THE CURRENT MIDWEST STYLES AS SHOWN IN THE HIGHWAY STANDARDS OR SPBGR AND TRAFFIC BARRIER TERMINALS INSTALLED PRIOR TO JANUARY 1, 2007 AS SHOWN IN THE PLAN DETAILS. NO ADDITIONAL COMPENSATION WILL BE ALLOWED FOR UTILIZING THE CURRENT MIDWEST STANDARDS.
13. THE DEPARTMENT STRONGLY ENCOURAGES THE PRIME CONTRACTOR AND THEIR SUB-CONTRACTORS TO HIRE MINORITY, WOMEN AND DISADVANTAGED INDIVIDUALS FROM ITS FEDERALLY FUNDED HIGHWAY CONSTRUCTION CAREERS TRAINING PROGRAM (HCCTP) TO HELP MEET WORKFORCE AND TRAINEE GOALS. THIS PROGRAM IS TRAINING MINORITIES, WOMEN AND DISADVANTAGED INDIVIDUALS IN HIGHWAY CONSTRUCTION-RELATED SKILLS, E.G., MATH FOR THE TRADES, JOB READINESS, TECHNICAL SKILLS COURSEWORK (CARPENTRY, CONCRETE FLATWORK, BLUEPRINT READING, SITE PLANS, SITE WORK, TOOLS USE, ETC.) AND OSHA 10 HOUR CERTIFICATION, TO PREPARE THEM FOR A CAREER IN THE HIGHWAY CONSTRUCTION TRADES. GRADUATES ARE WELL-TRAINED AND READY TO BECOME PRODUCTIVE ENTRY-LEVEL CONSTRUCTION WORKERS. CONTACT THE DISTRICT EEO OFFICE AT 618-346-3360 AND OR THE HCCTP COORDINATOR AT 618-874-6528 TO LEARN MORE ABOUT THE PROGRAM AND FOR ASSISTANCE IN MEETING WORKFORCE AND TRAINEE GOALS.

HIGHWAY STANDARDS

000001-08	701201-05	725001-01
001006	701301-04	782006-01
630001-12	701400-11	
630301-09	701401-13	630106-2
631011-10	701406-13	
631026-06	701421-08	
631031-18	701426-09	
635001-02	701428-01	
636001-02	701456-05	
643001-02	701501-06	
701001-02	701502-09	
701006-05	701601-09	
701011-04	701602-10	
701101-05	701606-10	
701106-02	701701-10	
	701901-08	

COMMENTS
NONE

REV. - MS

MODEL: r:\minal\notes (Sheet)
FILE NAME: p:\idc\p\lender\com\p\midot\documents\dot\Office\District 8\GRD Projects\0876653\CADData\CADsheets\0876653-ah-gemnets.dgn

USER NAME = Kevin.Lewis	DESIGNED -	REVISED -
	DRAWN -	REVISED -
PLOT SCALE = 0.16666633 ' / in.	CHECKED -	REVISED -
PLOT DATE = 3/8/2023	DATE -	REVISED -

STATE OF ILLINOIS
DEPARTMENT OF TRANSPORTATION

INDEX OF SHEETS, HIGHWAY STANDARDS,
GENERAL NOTES & COMMITMENTS

SHEET 0 OF 1 SHEETS STA. ___+___ TO STA. ___+___

F.A.P. RTE.	SECTION	COUNTY	TOTAL SHEETS	SHEET NO.
VAR.	DIST GUARDRAIL 2024-1	VARIOUS	12	2
			CONTRACT NO. 76R53	
		ILLINOIS	FED. AID PROJECT	

CODE NO.	ITEM	UNIT	TOTAL QUANTITY	CONSTRUCTION CODE			
				100% STATE STATE	100% STATE MCHDF	100% STATE HTMCB	COVID
				NONE	NONE	NONE	NONE
				0021	0021	0021	0021
				NONE	NONE	NONE	NONE
				NONE	NONE	NONE	NONE
63000350	LONG-SPAN GUARDRAIL OVER CULVERT, 12 FT 6 IN SPAN	FOOT	150	125			25
63100045	TRAFFIC BARRIER TERMINAL, TYPE 2	EACH	5	4	1		
63100070	TRAFFIC BARRIER TERMINAL, TYPE 5	EACH	5	4	1		
63100085	TRAFFIC BARRIER TERMINAL, TYPE 6	EACH	16	15	1		
63100167	TRAFFIC BARRIER TERMINAL, TYPE 1 (SPECIAL) TANGENT	EACH	133	75	10		48
63100169	TRAFFIC BARRIER TERMINAL, TYPE 1 (SPECIAL) FLARED	EACH	20	5	15		
64300260	IMPACT ATTENUATORS (FULLY REDIRECTIVE, NARROW), TEST LEVEL 3	EACH	5	3	2		
64300370	IMPACT ATTENUATORS (FULLY REDIRECTIVE, WIDE), TEST LEVEL 3	EACH	5	3	2		
67100100	MOBILIZATION	L SUM	1	0.33	0.2	0.33	0.14
X6360108	CABLE GUARD POST	EACH	950			950	
X6440120	HIGH TENSION CABLE POST REPAIR	EACH	350			350	
X0326468	MEDIAN CABLE	FOOT	900			900	
X6300210	GUARDRAIL BLOCKS	EACH	1435	500	385		550

100% FEDERAL

MODEL: 500 (Sheet)
FILE NAME: p:\projects\sw\henley.com\p\w\dot\documents\dot\Office\District 8\ORD Projects\0876853\CAD\data\CADsheets\0876853-ait-500.dgn

REV. - MS

USER NAME = Kevin.Lewis	DESIGNED -	REVISED -
	DRAWN -	REVISED -
PLOT SCALE = 0.16666633 1/ in.	CHECKED -	REVISED -
PLOT DATE = 3/8/2023	DATE -	REVISED -

**STATE OF ILLINOIS
DEPARTMENT OF TRANSPORTATION**

SUMMARY OF QUANTITIES

SCALE SHEET 8 OF SHEETS STA. + TO STA. +

F.A. RTE.	SECTION	COUNTY	TOTAL SHEETS	SHEET NO.
VAR	DIST 8 GUARDRAIL 2024-1	VARIOUS	12	3
			CONTRACT NO. 76R53	
ILLINOIS FED. AID PROJECT				

MODEL: S002 / Sheet1
 FILE NAME: p:\pub\paw\benhey.com\PNW\DOT\Documents\DOT Office\District 8\GRD Projects\0876853\CADD\data\CAD\sheet\0876853-ait-500.dgn

CODE NO.	ITEM	UNIT	TOTAL QUANTITY	CONSTRUCTION CODE			
				100% STATE STATE	100% STATE MCHDF	100% STATE HTMCB	COVID
				NONE	NONE	NONE	NONE
				0021	0021	0021	0021
X6300215	RAIL ELEMENT PLATES	EACH	930	400	310		220
X6300217	RAIL ELEMENT PLATES (RADIUS)	EACH	50	25	25		
X6300220	EXTRUDER HEAD	EACH	15	10	5		
X6300225	SINGLE END SECTION	EACH	6	5	1		
X6300231	STEEL POST, ATTACHED TO STRUCTURES	EACH	9	5	4		
X6300236	STEEL POSTS 6'	EACH	795	300	325		170
X6300239	STEEL POSTS 9'	EACH	650	250	150		250
X6331110	STEEL POSTS, SPECIAL	EACH	12	10	2		
X6430210	REMOVE AND REINSTALL IMPACT ATTENUATORS	EACH	85	20	65		
X7011834	TRAFFIC CONTROL AND PROTECTION, CALL OUT WORK	EACH	276	150	120		6
X7011836	TRAFFIC CONTROL AND PROTECTION, FREEWAY/EXPRESSWAY, CALL OUT WORK	EACH	5 10	150	100	250	10
X8030110	LOCATING UNDERGROUND CABLE, SPECIAL	EACH	27	10	2	10	5
Z0029655	HIGH TENSION CABLE ROAD GUARDPOST	EACH	2800			2500	300
Z0029657	HIGH TENSION CABLE SYSTEM MAINTENANCE	EACH	100			100	

100% FEDERAL

REV. - MS

USER NAME = Kevin.Lewis	DESIGNED -	REVISED -
	DRAWN -	REVISED -
PLOT SCALE = 0.16666633 1/ in.	CHECKED -	REVISED -
PLOT DATE = 3/8/2023	DATE -	REVISED -

**STATE OF ILLINOIS
 DEPARTMENT OF TRANSPORTATION**

SUMMARY OF QUANTITIES

SHEET 9 OF SHEETS STA. + TO STA. +

F.A. RTE.	SECTION	COUNTY	TOTAL SHEETS	SHEET NO.
VAR	DIST 8 GUARDRAIL 2024-1	VARIOUS	12	4
			CONTRACT NO. 76R53	
		ILLINOIS FED. AID PROJECT		

MODEL: S003 (Sheet)
 FILE NAME: p:\pub\paw\benhey.com\paw\DOT\Documents\DOT_081823\CADD\081823\CAD\Sheet\081823-ait-500.dgn

CODE NO.	ITEM	UNIT	TOTAL QUANTITY	CONSTRUCTION CODE			
				100% STATE STATE	100% STATE MCHDF	100% STATE HTMCB	COVID
				NONE	NONE	NONE	NONE
				0021	0021	0021	0021
Z0029658	REPAIR TRAFFIC BARRIER TERMINAL TYPE 1 SPECIAL - POST	EACH	79	14	65		
Z0029662	REPLACE HIGH TENSION CABLE GUARDPOST FOUNDATION	EACH	950			950	
Z0052410	REPAIR TRAFFIC BARRIER TERMINAL, TYPE 1 SPECIAL (TANGENT)	EACH	90	25	65		
Z0052415	REPAIR TRAFFIC BARRIER TERMINAL, TYPE 1 SPECIAL (FLARED)	EACH	14	10	4		
Z0052600	REPAIR TRAFFIC BARRIER TERMINAL, TYPE 2	EACH	9	5	4		
Z0052800	REPAIR TRAFFIC BARRIER TERMINAL, TYPE 3A	EACH	7	5	2		
Z0053000	REPAIR TRAFFIC BARRIER TERMINAL, TYPE 5	EACH	4	2	2		
Z0053200	REPAIR TRAFFIC BARRIER TERMINAL, TYPE 6	EACH	35	15	10		10
Z0059660	REPAIR TRAFFIC BARRIER TERMINAL TYPE 1 SPECIAL - RAIL ELEMENT PLATE	EACH	27	7	20		

100% FEDERAL

REV. - MS

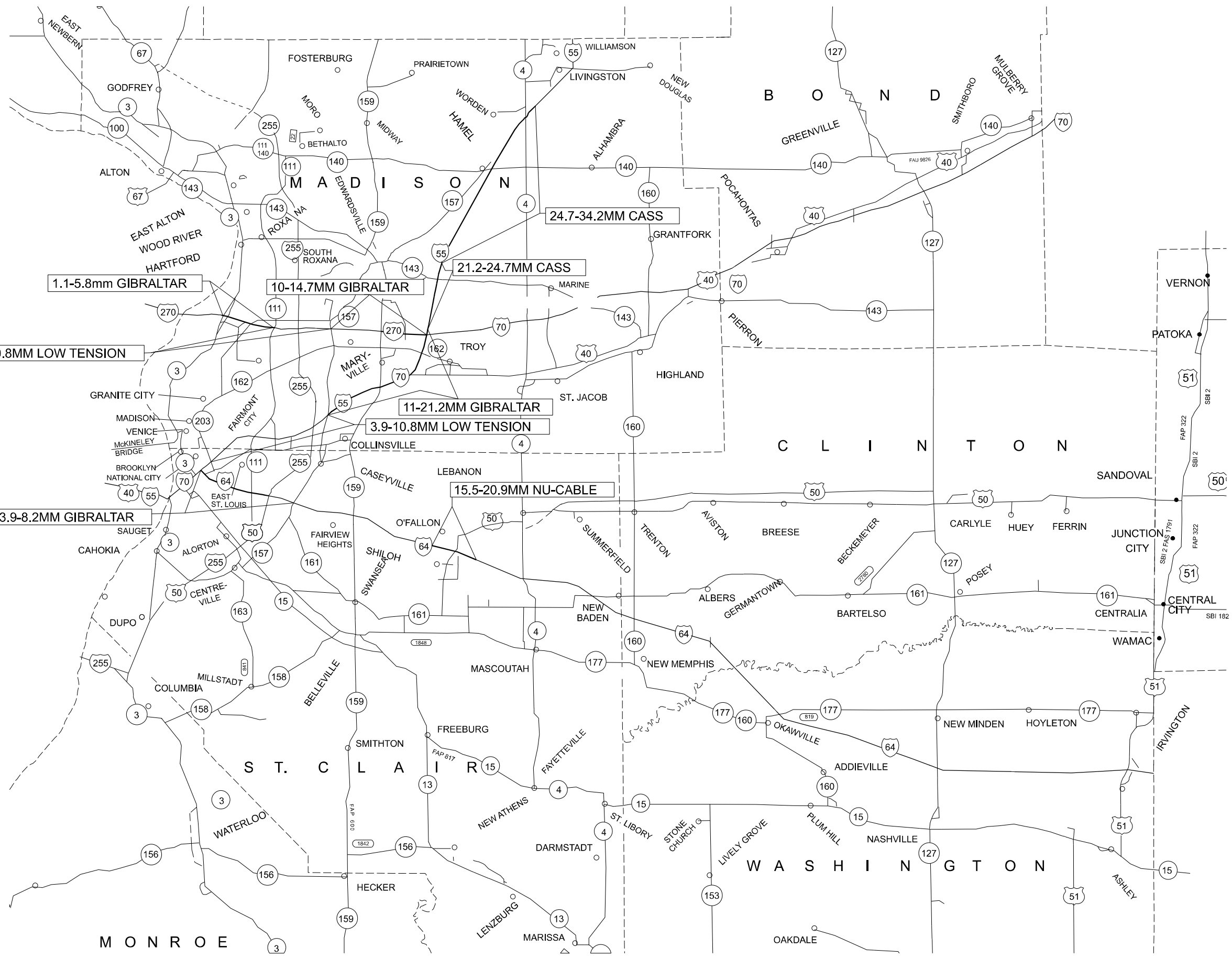
USER NAME = Kevin.Lewis	DESIGNED -	REVISED -
	DRAWN -	REVISED -
PLOT SCALE = 0.16666633 1/ in.	CHECKED -	REVISED -
PLOT DATE = 3/8/2023	DATE -	REVISED -

**STATE OF ILLINOIS
 DEPARTMENT OF TRANSPORTATION**

SUMMARY OF QUANTITIES

SHEET 10 OF SHEETS STA. + TO STA. +

F.A. RTE.	SECTION	COUNTY	TOTAL SHEETS	SHEET NO.
VAR	DIST 8 GUARDRAIL 2024-1	VARIOUS	12	5
			CONTRACT NO. 76R53	
ILLINOIS FED. AID PROJECT				



FOR INFORMATION ONLY.
 CONTRACTOR SHALL CONFIRM
 SYSTEM TYPE PRIOR TO
 ORDERING MATERIALS.

MODEL: LOCATION MAP 1 (Sheet)
 FILE NAME: P:\Bids\2023\11\11\DOT\Documents\DOT Office\District 8\ORD Project\Bids\76R53\CADD\Drawings\76R53-11\Map-A.dgn

USER NAME = Kevin.Lewis	DESIGNED -	REVISED -
	DRAWN -	REVISED -
PLOT SCALE = 0.16666833' / in.	CHECKED -	REVISED -
PLOT DATE = 3/8/2023	DATE -	REVISED -

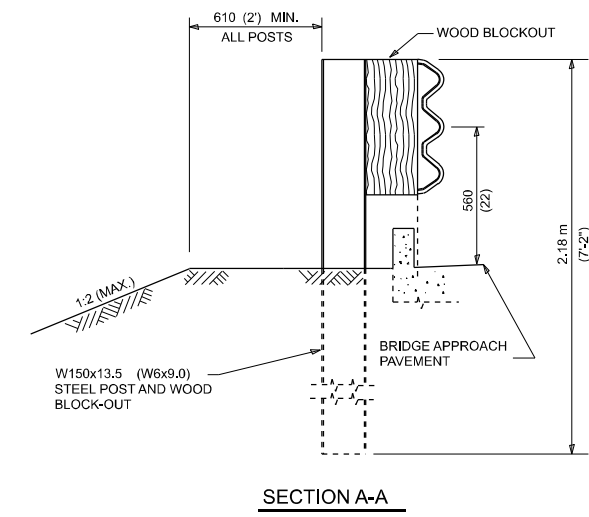
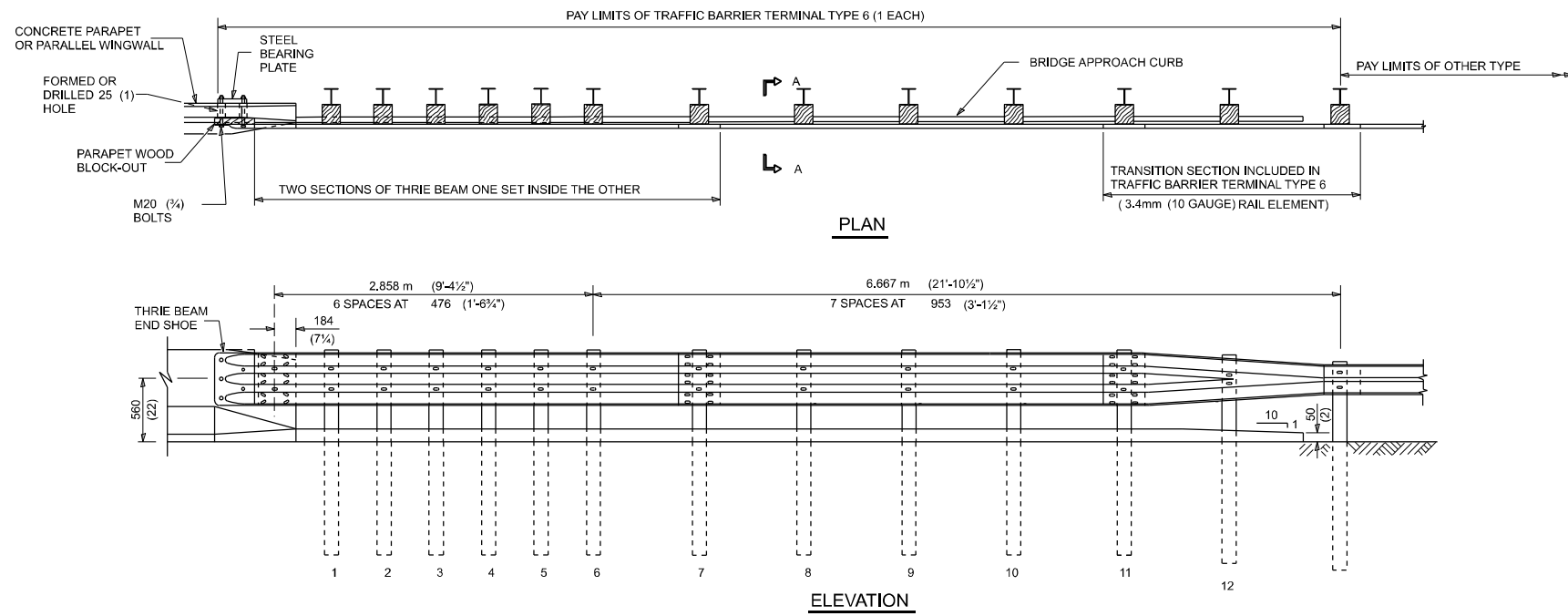
**STATE OF ILLINOIS
 DEPARTMENT OF TRANSPORTATION**

LOCATION MAP

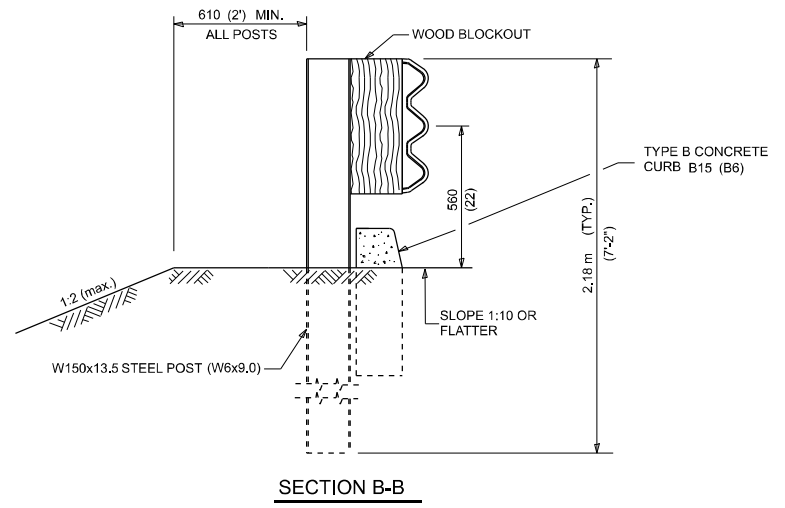
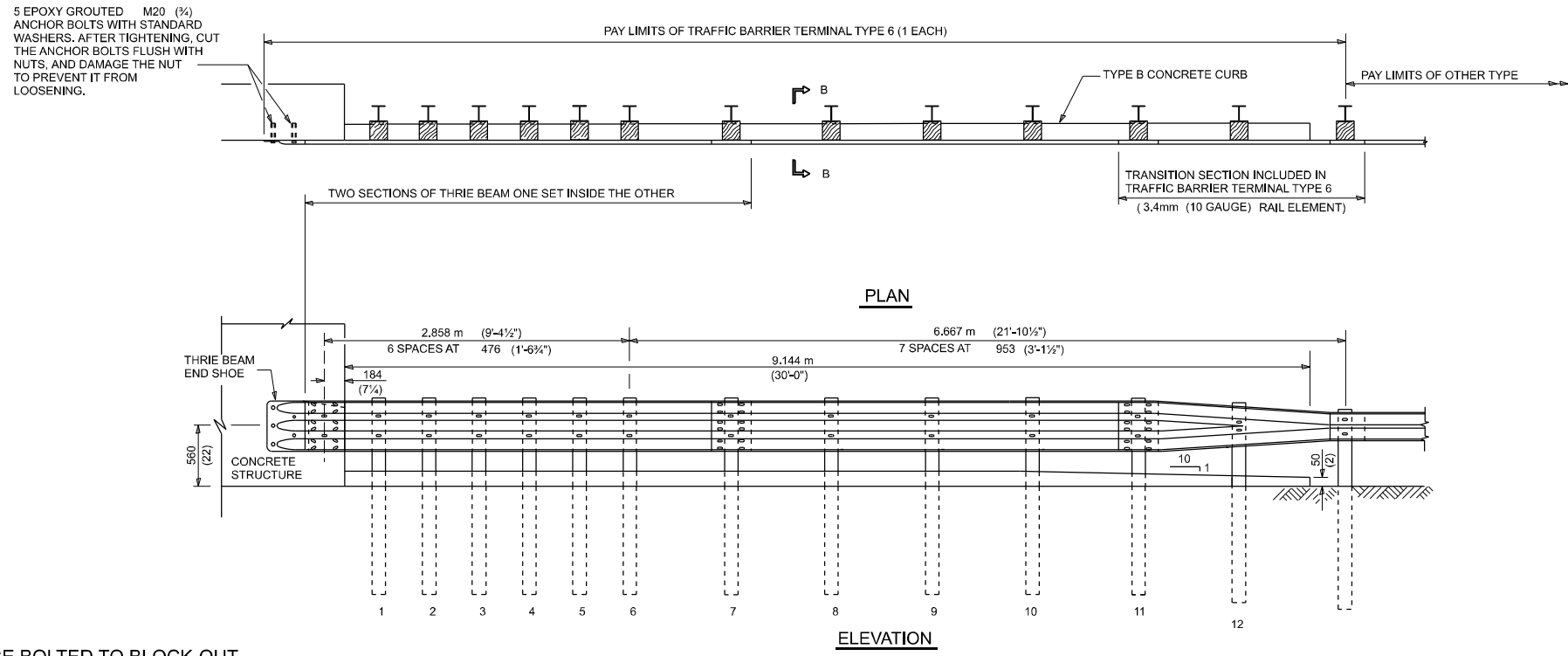
SCALE: SHEET 1 OF 1 SHEETS STA. TO STA.

F.A. RTE.	SECTION	COUNTY	TOTAL SHEETS	SHEET NO.
VAR	VARIOUS1	VARIOUS	1	1
			CONTRACT NO. 76R53	
ILLINOIS FED. AID PROJECT				

PARAPET OR WINGWALL



OTHER CONCRETE STRUCTURE



GENERAL NOTES

- THRIE BEAM RAIL SHALL BE BOLTED TO BLOCK-OUT AT ALL POSTS.
- ALL SLOPE RATIOS ARE EXPRESSED AS UNITS OF VERTICAL DISPLACEMENT TO UNITS OF HORIZONTAL DISPLACEMENT (V:H).
- ALL DIMENSIONS ARE IN MILLIMETERS (INCHES) UNLESS OTHERWISE SHOWN.

THIS DETAIL IS APPLICABLE TO THE GUARDRAIL SYSTEM USED PRIOR TO JANUARY 1, 2007. FOR DETAILS ON THE MIDWEST GUARDRAIL SYSTEM, SEE STANDARD 630001.

MODEL: D:\projects\11919\11919.dwg; USER: KLEWIS; DATE: 3/8/2023; FILE: 11919.dwg; PLOT: 11919.dwg; PLOT DATE: 3/8/2023

USER NAME = Kevin.Lewis	DESIGNED -	REVISED -
PLOT SCALE = 0.16666633 / in.	DRAWN -	REVISED -
PLOT DATE = 3/8/2023	CHECKED -	REVISED -
	DATE -	REVISED -

STATE OF ILLINOIS
DEPARTMENT OF TRANSPORTATION

TRAFFIC BARRIER TERMINAL
TYPE 5 & 5A

SCALE: SHEET 3 OF 10 SHEETS STA. TO STA.

F.A. RTE.	SECTION	COUNTY	TOTAL SHEETS	SHEET NO.
VAR	DIST 8 GUARDRAIL 2024-1	VARIOUS	12	7
			CONTRACT NO. 76R53	
ILLINOIS FED. AID PROJECT				

