

FAU RTE.	SECTION	COUNTY	TOTAL SHEETS	SHEET NO.
6290	22-00066-00-RS	IROQUOIS	15	J
		ILLINOIS	CONTRACT NO. 87809	

06-16-2023 LETTING ITEM 192

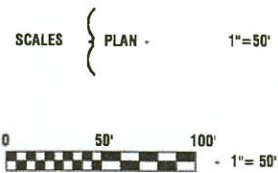
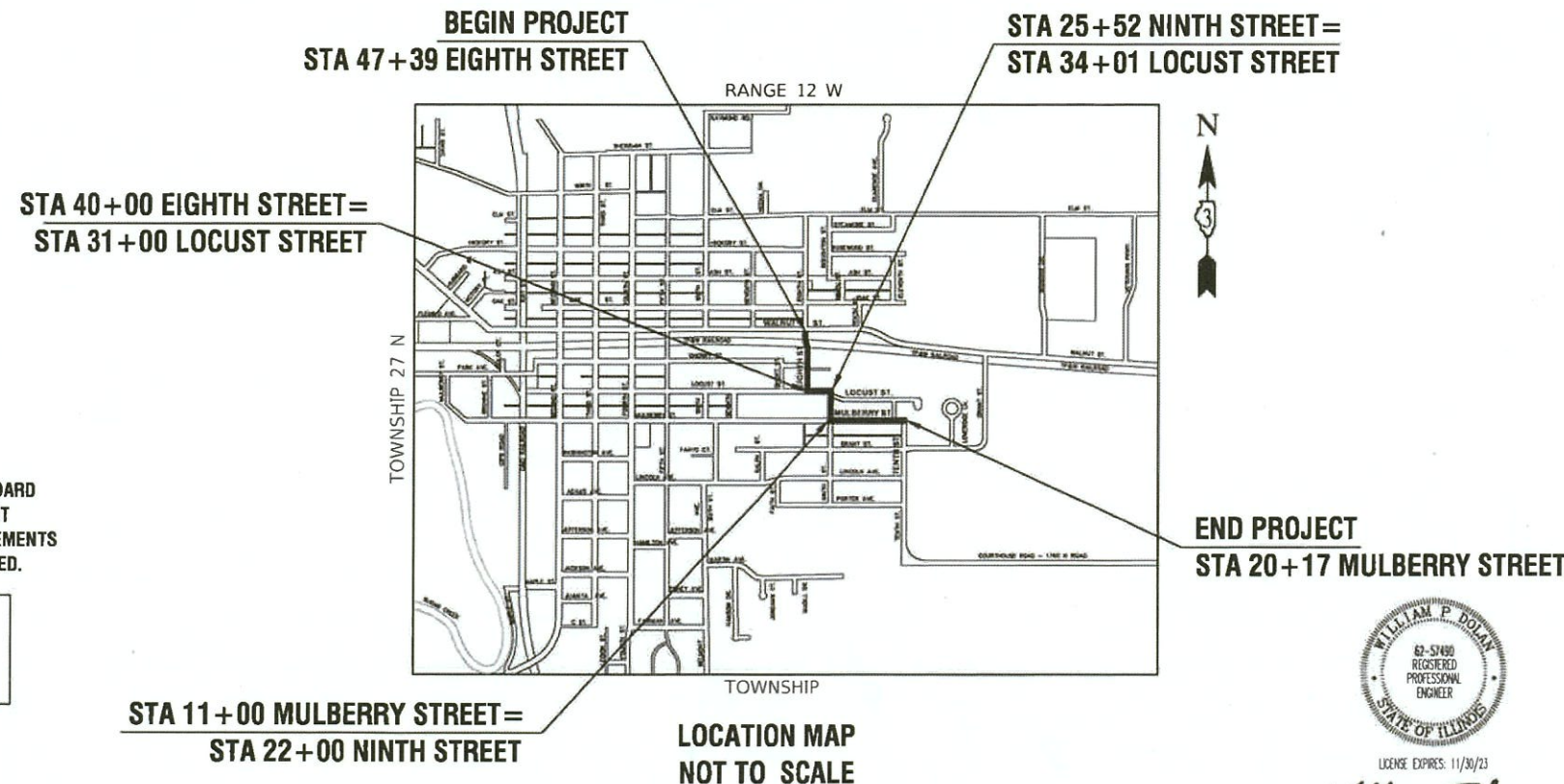
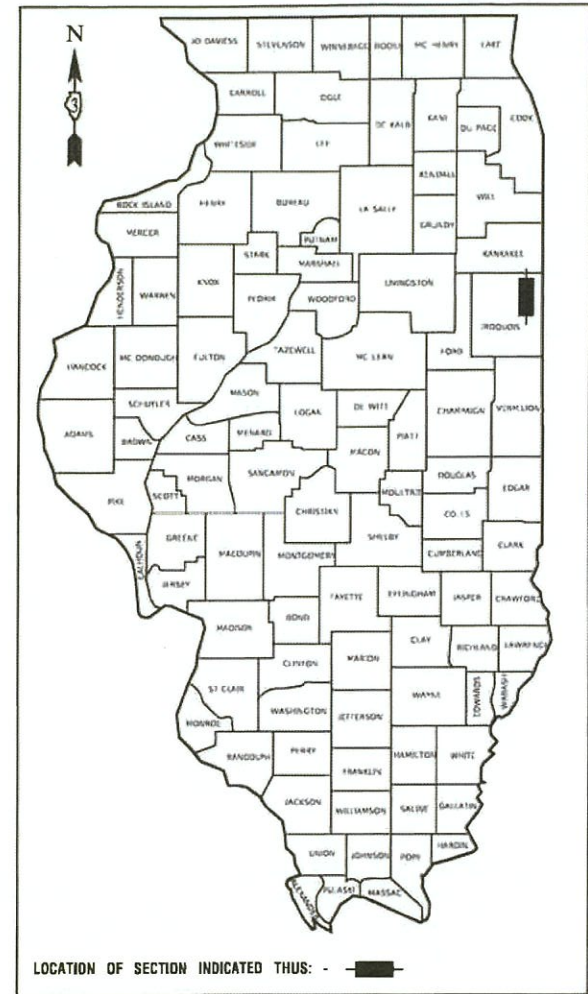
STATE OF ILLINOIS  
DEPARTMENT OF TRANSPORTATION

# PLANS FOR PROPOSED FEDERAL AID PROJECT

FAU ROUTE 6290 (S. EIGHTH STREET)  
WALNUT STREET TO TENTH STREET  
ROADWAY RESURFACING  
SECTION NO.: 22-00066-00-RS  
PROJECT NO.: YNX0(346)  
CITY of WATSEKA  
IROQUOIS COUNTY  
JOB NO.: C-93-021-23

FOR INDEX OF SHEETS, SEE SHEET NO. 2  
FOR HIGHWAY STANDARDS, SEE SHEET NO. 2

<b>S. EIGHTH STREET</b>	
<b>WALNUT STREET TO TENTH STREET</b>	
2021 ADT-	1,450
POSTED SPEED LIMIT-	25 MPH
FUNCTIONAL CLASSIFICATION-	MINOR COLLECTOR



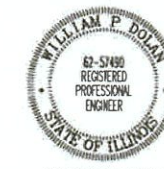
FULL SIZE PLANS HAVE BEEN PREPARED USING STANDARD ENGINEERING SCALES, REDUCED SIZED PLANS WILL NOT CONFORM TO STANDARD SCALES, IN MAKING MEASUREMENTS ON REDUCED PLANS, THE ABOVE SCALES MAY BE USED.

J. U. L. I. E.  
JOINT UTILITY LOCATION INFORMATION FOR EXCAVATION  
1 - 800 - 892 - 0123  
OR 811

STA 11+00 MULBERRY STREET =  
STA 22+00 NINTH STREET

LOCATION MAP  
NOT TO SCALE

GROSS LENGTH = 2,520 FEET = 0.477 MILES  
NET LENGTH = 2,520 FEET = 0.477 MILES



Will P. Doherty  
03-29-2023

ROBINSON ENGINEERING, LTD. 708-331-6700

STATE OF ILLINOIS DEPARTMENT OF TRANSPORTATION	
APPROVED	APRIL 6, 2023 <i>[Signature]</i> CITY OF WATSEKA, MAYOR
PASSED	APRIL 14, 2023 <i>[Signature]</i> DISTRICT 3 ENGINEER OF LOCAL ROADS & STREETS
RELEASING FOR BID BASED ON LIMITED REVIEW	APRIL 14, 2023 <i>[Signature]</i> REGIONAL ENGINEER

CONTRACT NO. 87809

PRINTED BY THE AUTHORITY OF  
THE STATE OF ILLINOIS

## INDEX OF SHEETS

1	COVER SHEET
2	INDEX OF SHEETS, HIGHWAY STANDARDS AND GENERAL NOTES
3-5	SUMMARY OF QUANTITIES
6	SCHEDULE OF QUANTITIES
7	TYPICAL CROSS SECTIONS
8	ALIGNMENT, TIES AND BENCHMARKS
9	PROPOSED IMPROVEMENT PLAN
10	PAVEMENT MARKING PLAN
11-15	IDOT DISTRICT 3 STANDARDS

## HIGHWAY STANDARDS

000001-08	STANDARD SYMBOLS, ABBREVIATIONS AND PATTERNS
424001-11	PERPENDICULAR CURB RAMPS FOR SIDEWALKS
424016-05	MID-BLOCK CURB RAMPS FOR SIDEWALKS
442201-03	CLASS C AND D PATCHES
606001-08	CONCRETE CURB TYPE B AND COMBINATION CONCRETE CURB AND GUTTER
701006-05	OFF ROAD OPERATIONS, 2L, 2W, 15'(4.5m) TO 24"(600mm) FROM PAVEMENT EDGE
701011-04	OFF ROAD MOVING OPERATIONS, 2L,2W, DAY ONLY
701301-04	LANE CLOSURE, 2L, 2W, SHORT TIME OPERATIONS
701311-03	LANE CLOSURE, 2L, 2W, MOVING OPERATIONS - DAY ONLY
701501-06	URBAN LANE CLOSURE, 2L, 2W, UNDIVIDED
701801-06	SIDEWALK, CORNER OR CROSSWALK CLOSURE
701901-08	TRAFFIC CONTROL DEVICES
780001-05	TYPICAL PAVEMENT MARKINGS

## DISTRICT THREE DETAILS

423-1	PCC URBAN ENTRANCES
424-29	ADA SIDEWALK ACCESSIBILITY RAMP DETAIL
606-4	REINFORCEMENT DETAIL FOR COMBINATION CONCRETE CURB AND GUTTER
780	URBAN PAVEMENT MARKING

## GENERAL NOTES

- ITEMS OF WORK LISTED IN THE SUMMARY OF QUANTITIES NOT SPECIFICALLY CALLED OUT ON THE PLANS SHALL BE PERFORMED AS DIRECTED BY THE ENGINEER.
- THE ROBINSON ENGINEERING, LTD. FIELD OFFICE (708-331-6700), AND THE PUBLIC WORKS DIRECTOR AT THE CITY OF WATSEKA, SHALL BE NOTIFIED TWO (2) WORKING DAYS BEFORE CONSTRUCTION BEGINS.
- BEFORE STARTING ANY EXCAVATION THE CONTRACTOR SHALL CALL "J.U.L.I.E." AT (800) 892-0123 OR 811 FOR FIELD LOCATIONS OF BURIED ELECTRIC, TELEPHONE AND GAS UTILITIES. (48 HOUR NOTIFICATION REQUIRED)
- UTILITIES INDICATED ON THE PLANS ARE PROVIDED FOR THE CONTRACTOR'S USE AND ARE BASED UPON INFORMATION AVAILABLE AT THE TIME OF THE ADVERTISEMENT FOR BIDS. THE OWNER AND ENGINEER DO NOT GUARANTEE THE ACCURACY OF UTILITY INFORMATION.
- IT SHALL BE THE CONTRACTOR'S RESPONSIBILITY TO VERIFY ALL DIMENSIONS AND CONDITIONS EXISTING IN THE FIELD PRIOR TO CONSTRUCTION AND ORDERING OF MATERIALS.
- THE THICKNESS OF HMA MIXTURE STATED IN THE SPECIFICATIONS IS THE NOMINAL THICKNESS. DEVIATIONS FROM THE NOMINAL THICKNESS WILL BE PERMITTED WHEN SUCH DEVIATIONS OCCUR DUE TO IRREGULARITIES IN THE EXISTING SURFACE OR BASE ON WHICH THE HMA SURFACE IS PLACED.
- ANY LOOSE MATERIAL DEPOSITED IN THE FLOW LINE OF DITCHES, GUTTERS OR OTHER DRAINAGE STRUCTURES SHALL BE REMOVED BY THE END OF EACH DAY BY THE CONTRACTOR.
- CLASS D PATCHING OPERATIONS FOR THIS CONTRACT SHALL BE PERFORMED AT THE DIRECTION OF THE ENGINEER AFTER PAVEMENT MILLING.
- CONTRACTOR SHALL TAKE PRECAUTION BY PRESERVING EXISTING TREES WITHIN THE RIGHT OF WAY. IF ANY DAMAGE OCCURS, TREES SHALL BE REPLACED IN KIND PER ARTICLE 201.07 REPAIR OR REPLACEMENT OF EXISTING PLANT MATERIAL REQUIREMENTS STATED HEREIN.
- NO PAVEMENT PATCHING SHALL BE PERMITTED AFTER FRIDAY AT 3:00 PM OF EACH AND EVERY WEEK AND NO HOLES WILL BE ALLOWED TO REMAIN OPEN OVERNIGHT OR OVER THE WEEKEND.
- ALL EQUIPMENT SHALL BE REMOVED OFF THE CITY STREETS DURING ALL HOLIDAY WEEKENDS AS COORDINATED WITH THE CITY.
- THE UNIT WEIGHT USED TO CALCULATE ALL HMA SURFACE MIXTURE IS 112 LBS/SY-IN. ASSUMED APPLICATION RATE OF PRIME COAT IS 0.25 LBS/SF. ASSUMED APPLICATION RATE OF TACK COAT IS 0.05 LBS/SF ON MILLED SURFACE AND 0.025 LBS/SF BETWEEN LIFTS.

FILE NAME = 22R0384-INDX-01 - P01	USER NAME =	DESIGNED -- JF	REVISED --	STATE OF ILLINOIS DEPARTMENT OF TRANSPORTATION	S. EIGHTH STREET ROADWAY RESURFACING INDEX OF SHEETS & STATE STANDARDS, STANDARDS & GENERAL NOTES	F.A.U. RTE.	SECTION	COUNTY	TOTAL SHEETS	SHEET NO.	
	CHECKED -- WPD	REVISED --	6290			22-00066-00-RS	IROQUOIS	15	2		
	PLOT SCALE =	DRAWN -- RG	REVISED --			CONTRACT NO. 87809					
	PLOT DATE = 03-29-2023	CHECKED -- AG	REVISED --			SCALE: NONE	SHEET NO. 2 OF 15 SHEETS	STA. TO STA.	FED. ROAD DIST. NO. 3	ILLINOIS	FED. AID PROJECT YNX0(346)

SUMMARY OF QUANTITIES					ROAD	SAFETY
					CONSTRUCTION TYPE CODE	
SPECIALTY ITEM	CODE NO.	PAY ITEM	UNIT	QUANTITY	005	021
	20201200	REMOVAL AND DISPOSAL OF UNSUITABLE MATERIAL	CU YD	110	110	
	21101615	TOPSOIL FURNISH AND PLACE, 4"	SQ YD	213	213	
	25000210	SEEDING, CLASS 2A	ACRE	0.10	0.10	
	25100630	EROSION CONTROL BLANKET	SQ YD	213	213	
	30300112	AGGREGATE SUBGRADE IMPROVEMENT 12"	SQ YD	329	329	
	35101600	AGGREGATE BASE COURSE, TYPE B 4"	SQ YD	241	153	88
	35800100	PREPARATION OF BASE	SQ YD	5719	5719	
	35800200	AGGREGATE BASE REPAIR	TON	100	100	
	40201000	AGGREGATE FOR TEMPORARY ACCESS	TON	40	40	
	40600275	BITUMINOUS MATERIALS (PRIME COAT)	POUND	12868	12868	
	40600290	BITUMINOUS MATERIALS (TACK COAT)	POUND	3612	3612	
	40600982	HOT-MIX ASPHALT SURFACE REMOVAL - BUTT JOINT	SQ YD	100	100	
	40602978	HOT-MIX ASPHALT BINDER COURSE, IL- 9.5, N50	TON	133	133	
	40603080	HOT-MIX ASPHALT BINDER COURSE, IL-19.0, N50	TON	825	825	
	40604060	HOT-MIX ASPHALT SURFACE COURSE, IL-9.5, MIX "D", N50	TON	628	628	

FILE NAME = 22R0354-QUAN-01 - 001

USER NAME =	DESIGNED - JF	REVISED -
	CHECKED - WD	REVISED -
PLOT SCALE =	DRAWN - RG	REVISED -
PLOT DATE = 03-29-2023	CHECKED - AG	REVISED -

STATE OF ILLINOIS  
DEPARTMENT OF TRANSPORTATION

S. EIGHTH STREET ROADWAY RESURFACING SUMMARY OF QUANTITIES		
SCALE: NONE	SHEET NO. 3	OF 15 SHEETS
STA.	TO STA.	

F.A.U. RTE.	SECTION	COUNTY	TOTAL SHEETS	SHEET NO.
6260	22-00068-00-RS	IROQUOIS	15	3
CONTRACT NO. 87809				
FED. ROAD DIST. NO. 3 ILLINOIS FED. AID PROJECT YNXX(348)				



SUMMARY OF QUANTITIES					ROAD	SAFETY
SPECIALTY ITEM	CODE NO.	PAY ITEM	UNIT	QUANTITY	CONSTRUCTION TYPE CODE	
					005	021
	42300200	PORTLAND CEMENT CONCRETE DRIVEWAY PAVEMENT, 6 INCH	SQ YD	146	146	
	42400200	PORTLAND CEMENT CONCRETE SIDEWALK 5 INCH	SQ FT	789		789
	42400800	DETECTABLE WARNINGS	SQ FT	56		56
	44000160	HOT-MIX ASPHALT SURFACE REMOVAL, 2 3/4"	SQ YD	1538	1538	
	44000164	HOT-MIX ASPHALT SURFACE REMOVAL, 3 3/4"	SQ YD	5719	5719	
	44000200	DRIVEWAY PAVEMENT REMOVAL	SQ YD	153	153	
	44000500	COMBINATION CURB AND GUTTER REMOVAL	FOOT	757	757	
	44000600	SIDEWALK REMOVAL	SQ FT	789		789
	44201717	CLASS D PATCHES, TYPE II, 6 INCH	SQ YD	12	12	
	44201721	CLASS D PATCHES, TYPE III, 6 INCH	SQ YD	17	17	
	60266600	VALVE BOXES TO BE ADJUSTED	EACH	8	8	
	60603800	COMBINATION CONCRETE CURB AND GUTTER, TYPE B-6.12	FOOT	547	547	
	60604400	COMBINATION CONCRETE CURB AND GUTTER, TYPE B-6.18	FOOT	210	210	
	67100100	MOBILIZATION	LSUM	1	1	
	70102620	TRAFFIC CONTROL AND PROTECTION, STANDARD 701501	LSUM	1	1	

FILE NAME = 22R0334-QUAN-01 - 002

USER NAME =	DESIGNED - JF	REVISED -
	CHECKED - WD	REVISED -
PLOT SCALE =	DRAWN - BG	REVISED -
PLOT DATE = 03-29-2023	CHECKED - APG	REVISED -

STATE OF ILLINOIS  
DEPARTMENT OF TRANSPORTATION

S. EIGHTH STREET ROADWAY RESURFACING SUMMARY OF QUANTITIES			
SCALE:	SHEET NO. 4	OF 15 SHEETS	STA. TO STA.

F.A.U. RTE.	SECTION	COUNTY	TOTAL SHEETS	SHEET NO.
6290	22-00066-00-RS	IROQUOIS	15	4
CONTRACT NO. 87809			FED. AID PROJECT YN00(346)	

SUMMARY OF QUANTITIES					ROAD	SAFETY
					CONSTRUCTION TYPE CODE	
SPECIALTY ITEM	CODE NO.	PAY ITEM	UNIT	QUANTITY	005	021
	70102640	TRAFFIC CONTROL AND PROTECTION, STANDARD 701801	LSUM	1	1	
*	78000100	THERMOPLASTIC PAVEMENT MARKING -- LETTERS AND SYMBOLS	SQ FT	124		124
*	78000200	THERMOPLASTIC PAVEMENT MARKING -- LINE 4"	FOOT	1020		1020
*	78000400	THERMOPLASTIC PAVEMENT MARKING -- LINE 6"	FOOT	433		433
*	78000600	THERMOPLASTIC PAVEMENT MARKING -- LINE 12"	FOOT	33		33
*	78000650	THERMOPLASTIC PAVEMENT MARKING -- LINE 24"	FOOT	276		276
	78300202	PAVEMENT MARKING REMOVAL -- WATER BLASTING	SQ FT	200		200
	Z0004514	HOT-MIX ASPHALT DRIVEWAY PAVEMENT, 4"	SQ YD	7	7	
	Z0017400	DRAINAGE & UTILITY STRUCTURES TO BE ADJUSTED	EACH	21	21	
	Z0017700	DRAINAGE & UTILITY STRUCTURES TO BE RECONSTRUCTED	EACH	1	1	
	Z0048665	RAILROAD PROTECTIVE LIABILITY INSURANCE	LSUM	1		1

HOT-MIX ASPHALT PAVEMENT											
LOCATION			AREA	PREPARATION OF BASE	BITUMINOUS MATERIALS (PRIME COAT)	BITUMINOUS MATERIALS (TACK COAT)	HOT-MIX ASPHALT BINDER COURSE, IL-9.5, N50	HOT-MIX ASPHALT BINDER COURSE, IL-19.0, N50	HOT-MIX ASPHALT SURFACE COURSE, IL-9.5, MIX "D", N50	HOT-MIX ASPHALT SURFACE REMOVAL, 2 3/4"	HOT-MIX ASPHALT SURFACE REMOVAL, 3 3/4"
FROM STA.	TO STA.	OFFSET	SQ FT	SQ YD	POUND	POUND	TON	TON	TON	SQ YD	SQ YD
43+56	40+32	RT/LT	8,013	890	2,003	401	128	77			890
34+85	30+53	RT/LT	13,844			1,038	133	133	1,538		
24+86	22+33	RT/LT	8,619	958	2,155	431		138		958	
20+17	10+58	RT/LT	34,839	3,871	8,710	1,742	558	335			3,871
TOTALS				5,719	12,868	3,612	133	825	628	1,538	5,719

DRIVEWAY					
LOCATION		AGGREGATE BASE COURSE, TYPE B 4"	PORTLAND CEMENT CONCRETE DRIVEWAY PAVEMENT, 6 INCH	DRIVEWAY PAVEMENT REMOVAL	HOT-MIX ASPHALT DRIVEWAY PAVEMENT, 4"
STATION	OFFSET	SQ YD	SQ YD	SQ YD	SQ YD
42+35	RT	2		2	2
34+72	RT	24	24	24	
34+11	LT	31	31	31	
16+65	LT	13	11	13	2
15+19	RT	21	21	21	
15+10	LT	11	11	11	
13+92	LT	21	18	21	3
12+56	RT	30	30	30	
TOTALS		153	146	153	7

PORTLAND CEMENT CONCRETE SIDEWALK					
LOCATION		AGGREGATE BASE COURSE, TYPE B 4"	PORTLAND CEMENT CONCRETE SIDEWALK 5 INCH	DETECTABLE WARNINGS	SIDEWALK REMOVAL
STATION	OFFSET	SQ YD	SQ FT	SQ FT	SQ FT
42+27	RT	18	166		166
34+53	RT	7	66	8	66
33+86	RT	6	58	8	58
31+39	LT	35	312	8	312
31+33	RT	7	63	8	63
30+76	LT	5	41	8	41
11+25	RT	5	42	8	42
10+79	RT	5	41	8	41
TOTALS		88	789	56	789

PAVEMENT STRIPING								
LOCATION			THERMOPLASTIC PAVEMENT MARKING - LETTERS AND SYMBOLS	THERMOPLASTIC PAVMENT MARKING - LINE 4"	THERMOPLASTIC PAVMENT MARKING - LINE 6"	THERMOPLASTIC PAVMENT MARKING - LINE 12"	THERMOPLASTIC PAVMENT MARKING - LINE 24"	PAVEMENT MARKING REMOVAL - WATER BLASTING
FROM STA.	TO STA.	OFFSET	SQ FT	FOOT	FOOT	FOOT	FOOT	SQ FT
47+39	43+56	RT/LT						200
47+39	46+96	RT/LT		86		33		
47+39	46+03	RT/LT		278				
47+09	47+09	LT					18	
46+84	46+84	LT	62					
46+59	46+59	LT					17	
46+03	46+03	LT					17	
45+82	44+63	RT/LT		238				
45+82	45+82	RT					18	
45+23	45+23	RT					16	
44+98	44+98	RT	62					
44+73	44+73	RT					17	
43+32	43+32	RT/LT			82			
42+99	42+99	LT					14	
42+88	42+88	RT			63		12	
40+36	40+36	LT					18	
40+29	40+29	RT/LT			71			
34+85	31+42	RT/LT		86				
33+23	31+42	LT		181				
33+23	31+72	RT		151				
31+42	31+42	LT					10	
31+35	31+35	RT/LT			40			
30+59	30+59	RT					10	
25+15	25+15	RT/LT			112			
25+08	25+08	RT					29	
22+32	22+32	LT					17	
21+71	21+71	RT/LT			65			
21+64	21+64	RT					16	
19+19	19+19	LT					15	
11+32	11+32	LT					18	
10+64	10+64	RT					14	
TOTALS			124	1020	433	33	276	200

COMBINATION CONCRETE CURB AND GUTTER				
LOCATION		COMBINATION CURB AND GUTTER REMOVAL	COMBINATION CONCRETE CURB AND GUTTER, TYPE B-6.12	COMBINATION CONCRETE CURB AND GUTTER, TYPE B-6.18
STATION	OFFSET	FOOT	FOOT	FOOT
42+40	RT	33	33	
34+48	RT	22		22
33+84	RT	18		18
33+36	LT	16		16
32+99	LT	21		21
31+66	LT	20		20
31+31	LT	50		50
31+21	RT	32		32
30+74	LT	31		31
22+32	LT	23	23	
18+33	LT	27	27	
18+00	RT	36	36	
16+61	RT	87	87	
16+57	LT	57	57	
15+12	LT	28	28	
15+08	RT	21	21	
13+68	LT	73	73	
12+65	RT	105	105	
11+27	RT	32	32	
10+80	RT	25	25	
TOTALS		757	547	210

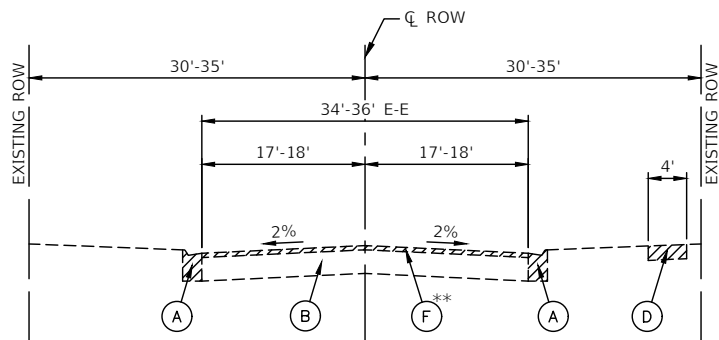
FILE NAME = 22R0384-QUAN-01 - S01

USER NAME =	DESIGNED - JF	REVISED -
	CHECKED - WD	REVISED -
PLOT SCALE =	DRAWN - RG	REVISED -
PLOT DATE = 03-29-2023	CHECKED - AG	REVISED -

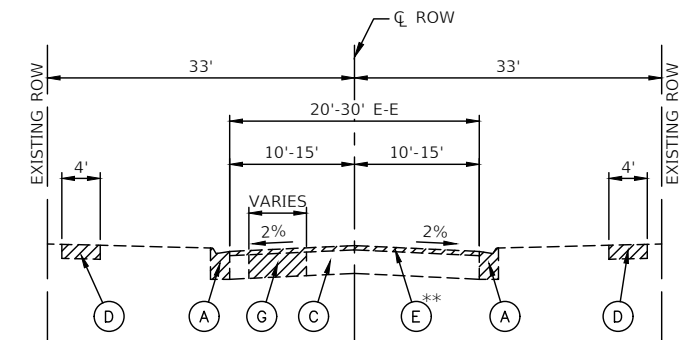
STATE OF ILLINOIS  
DEPARTMENT OF TRANSPORTATION

S. EIGHTH STREET ROADWAY RESURFACING SCHEDULE OF QUANTITIES		
SCALE: NONE	SHEET NO. 6 OF 15 SHEETS	STA. TO STA.

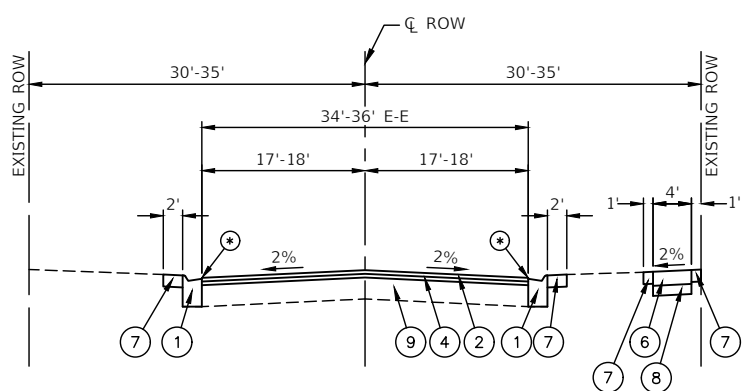
F.A.U. RTE.	SECTION	COUNTY	TOTAL SHEETS	SHEET NO.
6290	22-00066-00-RS	IROQUOIS	15	6
CONTRACT NO. 87809			FED. ROAD DIST. NO. 3 ILLINOIS FED. AID PROJECT YNX0(346)	



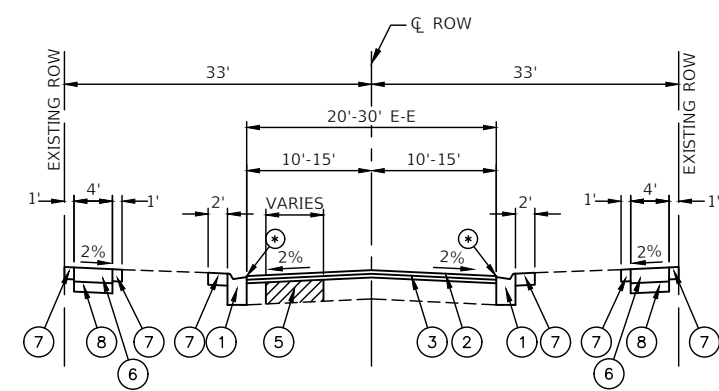
**EXISTING TYPICAL SECTION**  
 EIGHTH STREET - WALNUT STREET TO LOCUST STREET  
 NINTH STREET - LOCUST STREET TO MULBERRY STREET  
 MULBERRY STREET - NINTH STREET TO TENTH STREET



**EXISTING TYPICAL SECTION**  
 LOCUST STREET - EIGHTH STREET TO NINTH STREET



**PROPOSED TYPICAL SECTION**  
 EIGHTH STREET - WALNUT STREET TO LOCUST STREET  
 NINTH STREET - LOCUST STREET TO MULBERRY STREET  
 MULBERRY STREET - NINTH STREET TO TENTH STREET



**PROPOSED TYPICAL SECTION**  
 LOCUST STREET - EIGHTH STREET TO NINTH STREET

⊕ FINISHED PAVEMENT SURFACE SHALL BE 1/4" ABOVE TOP OF GUTTER.

⊕ FINISHED PAVEMENT SURFACE SHALL BE 1/4" ABOVE TOP OF GUTTER.

**EXISTING LEGEND**

- (A) EXISTING CURB AND GUTTER
- (B) EXISTING AGGREGATE BASE
- (C) EXISTING ASPHALT BASE
- (D) EXISTING PCC SIDEWALK
- (E) HOT-MIX ASPHALT SURFACE REMOVAL, 2 3/4" \*\*
- (F) HOT-MIX ASPHALT SURFACE REMOVAL, 3 3/4" \*\*
- (G) PAVEMENT REMOVAL FOR CLASS "D" PATCHES, 6"
- ▨ ITEMS TO BE REMOVED (AS DIRECTED BY THE ENGINEER)

**PROPOSED LEGEND**

- (1) COMBINATION CONCRETE CURB AND GUTTER, TYPE B-6.12 OR B-6.18 (TO BE REPLACED AS DIRECTED BY THE ENGINEER)
- (2) HOT-MIX ASPHALT SURFACE COURSE, IL-9.5 MIX "D", N50, 1 1/2"
- (3) HOT-MIX ASPHALT BINDER COURSE, IL-9.5, N50, 1 1/2"
- (4) HOT-MIX ASPHALT BINDER COURSE, IL-19.0, N50, 2 1/2"
- (5) CLASS "D" PATCHES, 6" (AS DIRECTED BY THE ENGINEER)
- (6) PORTLAND CEMENT CONCRETE SIDEWALK 5" (6" AT DRIVEWAYS) (AS DIRECTED BY THE ENGINEER)
- (7) TOPSOIL, FURNISH AND PLACE, 4" AND SEEDING, CLASS 2A
- (8) AGGREGATE BASE COURSE, TYPE B, 4"
- (9) AGGREGATE BASE REPAIR & PREPARATION OF BASE (AS NECESSARY)

**NOTES**

PAVEMENT MARKING REMOVAL AND REPLACEMENT ON EIGHTH STREET ONLY FROM WALNUT STREET TO CHERRY STREET (NO RESURFACING).  
 \*\*MAY REQUIRE MILLING OF STONE BASE TO REACH DEPTH REQUIRED FOR ASPHALT PLACEMENT. INCLUDED IN THE COST OF HMA SURFACE REMOVAL PAY ITEM.

**HMA MIXTURE REQUIREMENT TABLE**

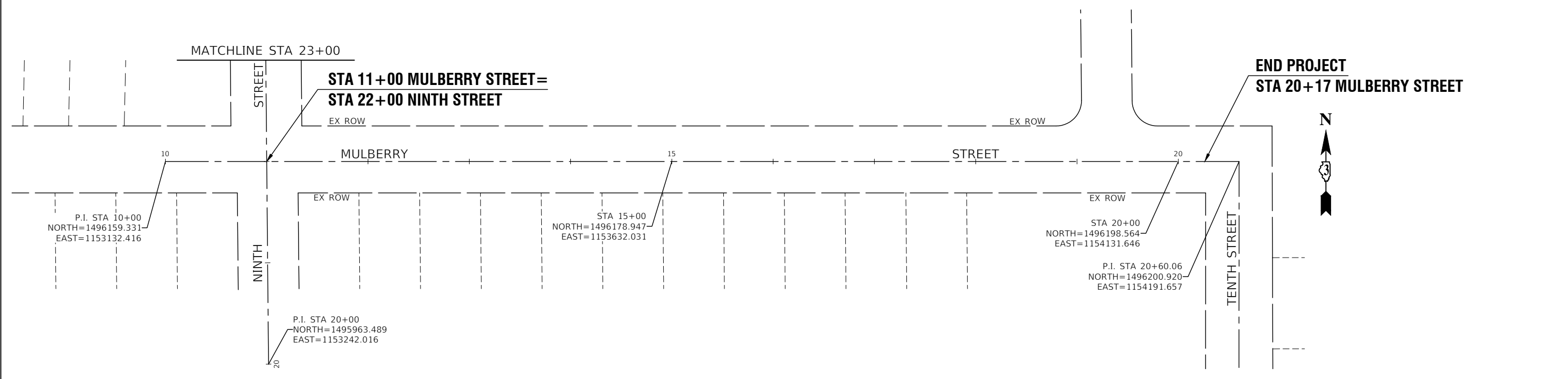
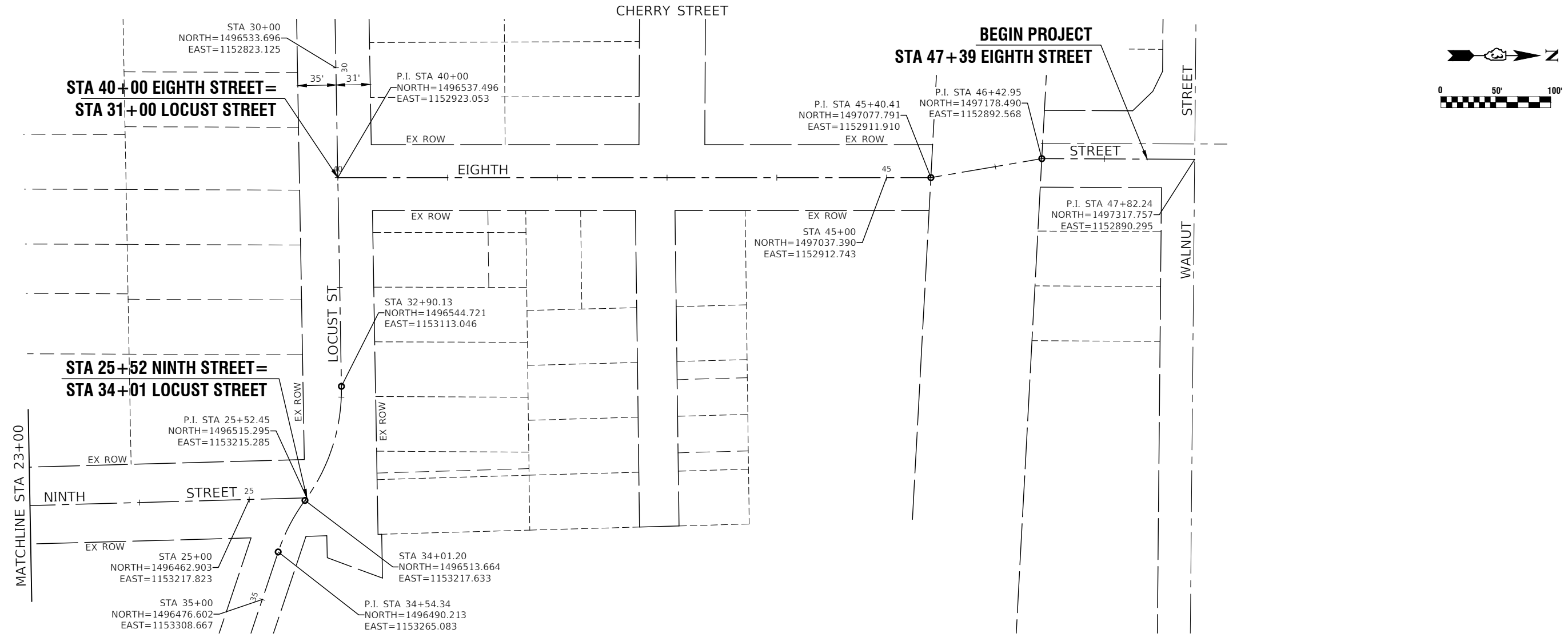
LOCATIONS:	RESURFACING	RESURFACING	RESURFACING	PATCHING	DRIVEWAY	DRIVEWAY
MIXTURE USE(S):	HMA 1.5" BINDER	HMA 2.5" BINDER	HMA 1.5" SURFACE	HMA 6" PATCHING	HMA DRIVEWAY BOTTOM LIFT	HMA DRIVEWAY TOP LIFT
BINDER GRADE (PG):	PG 64-22	PG 64-22	PG 64-22	PG 64-22	PG 64-22	PG 64-22
DESIGN AIR VOIDS:	4.0% @ N50	4.0% @ N50	4.0% @ N50	4.0% @ N50	4.0% @ N50	4.0% @ N50
MIXTURE COMPOSITION: (MIXTURE GRADATION)	IL 9.5	IL 19.0	IL 9.5	IL 19.0	IL 19.0	IL 9.5
FRICTION AGGREGATE:			MIXTURE D			
MIXTURE WEIGHT:	112.0 LB/SY/IN	112.0 LB/SY/IN	112.0 LB/SY/IN	112.0 LB/SY/IN	112.0 LB/SY/IN	112.0 LB/SY/IN
QUALITY MANAGEMENT PROGRAM:	QCQA	QCQA	QCQA	QCQA	QCQA	QCQA
SUBLOT SIZE:	NA	NA	NA	NA	NA	NA
DENSITY TEST METHOD:	NUCLEAR	NUCLEAR	NUCLEAR	NUCLEAR	NUCLEAR	NUCLEAR
MATERIAL TRANSFER DEVICE (REQUIRED):	NO	NO	NO	NO	NO	NO

FILE NAME = 22R0384-TYPX-01 - P01	USER NAME =	DESIGNED -- JF	REVISED --
	CHECKED -- WD	CHECKED -- WD	REVISED --
	PLOT SCALE =	DRAWN -- RG	REVISED --
	PLOT DATE = 03-29-2023	CHECKED -- AG	REVISED --

STATE OF ILLINOIS  
 DEPARTMENT OF TRANSPORTATION

S. EIGHTH STREET  
 ROADWAY RESURFACING  
 TYPICAL CROSS SECTIONS  
 SCALE: NONE SHEET NO. 7 OF 15 SHEETS STA. TO STA.

F.A.U. RTE.	SECTION	COUNTY	TOTAL SHEETS	SHEET NO.
6290	22-00066-00-RS	IROQUOIS	15	7
CONTRACT NO. 87809				
FED. ROAD DIST. NO. 3 ILLINOIS FED. AID PROJECT YNX0(346)				



FILE NAME = 22R0384-TIES-01 - PLAN-01

USER NAME =	DESIGNED -- JF	REVISED --
	CHECKED -- WD	REVISED --
PLOT SCALE =	DRAWN -- RG	REVISED --
PLOT DATE = 03-29-2023	CHECKED -- AG	REVISED --

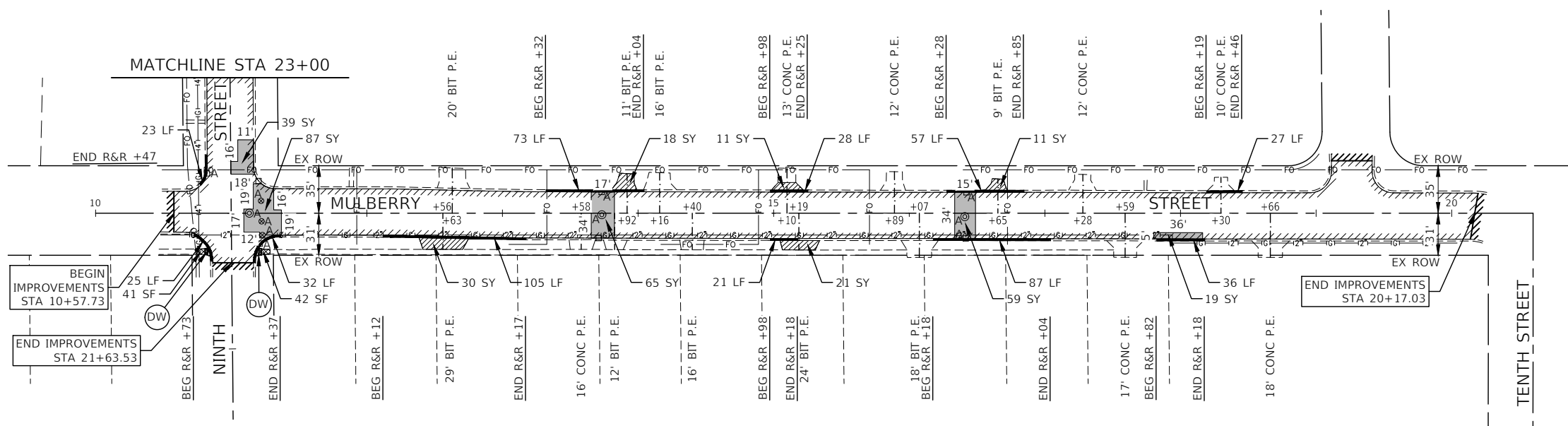
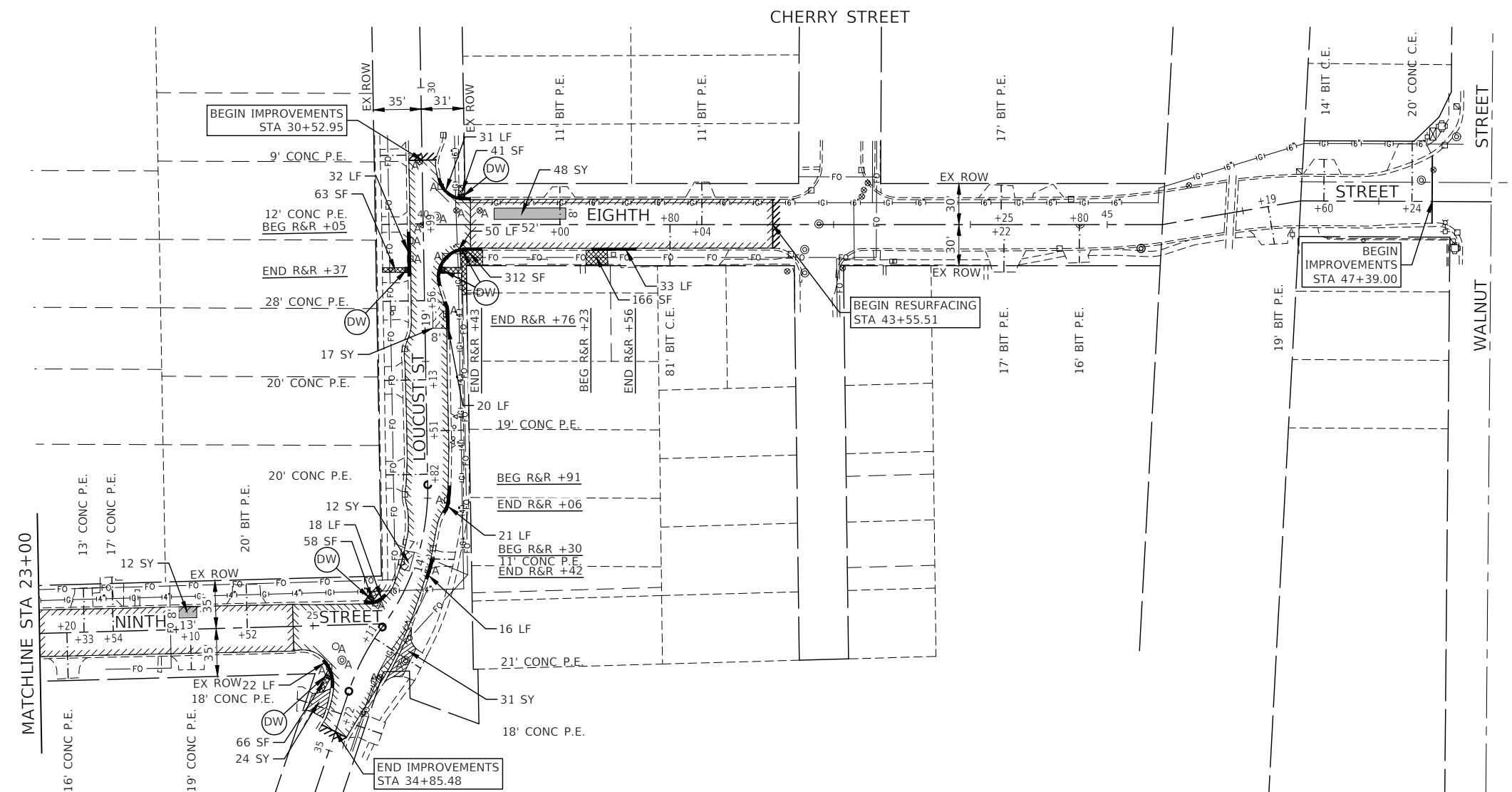
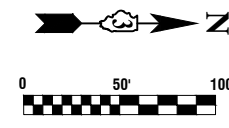
STATE OF ILLINOIS  
DEPARTMENT OF TRANSPORTATION

S. EIGHTH STREET  
ROADWAY RESURFACING  
TIES AND BENCHMARKS

SCALE: 1"=50'      SHEET NO. 8 OF 15 SHEETS      STA. TO STA.

F.A.U. RTE.	SECTION	COUNTY	TOTAL SHEETS	SHEET NO.
6290	22-00066-00-RS	IROQUOIS	15	8
CONTRACT NO. 87809				
FED. ROAD DIST. NO. 3 ILLINOIS FED. AID PROJECT YNX0(346)				





**LEGEND**

- HMA SURFACE REMOVAL, 2 3/4" HOT-MIX ASPHALT BINDER COURSE, IL-9.5, N50, 1 1/2" HOT-MIX ASPHALT SURFACE COURSE, IL-9.5, MIX "D", N50, 1 1/2"
- HMA SURFACE REMOVAL, 3 3/4" HOT-MIX ASPHALT BINDER COURSE, IL-19.0, N50, 2 1/2" HOT-MIX ASPHALT SURFACE COURSE, IL-9.5, MIX "D", N50, 1 1/2"
- SIDEWALK REMOVAL PCC SIDEWALK, 5" (6" THRU DRIVEWAYS) AGGREGATE BASE COURSE, TYPE B, 4"
- CLASS D PATCHES, 6"
- AGGREGATE SUBGRADE IMPROVEMENT, 12"
- DRIVEWAY PAVEMENT REMOVAL PCC DRIVEWAY PAVEMENT, 6"
- DETECTABLE WARNING - DW
- COMBINATION CONCRETE CURB AND GUTTER, B-6.12 OR B-6.18 REMOVAL AND REPLACEMENT
- "A" STRUCTURE OR VALVE BOX TO BE ADJUSTED
- "R" STRUCTURE TO BE RECONSTRUCTED
- HMA SURFACE REMOVAL - BUTT JOINT
- BEG R&R +XX** BEGIN STATION FOR CURB AND GUTTER REMOVAL AND REPLACEMENT
- END R&R +XX** END STATION OF CURB AND GUTTER REMOVAL AND REPLACEMENT

FILE NAME = 22R0384-PLAN-01 - PLAN-01

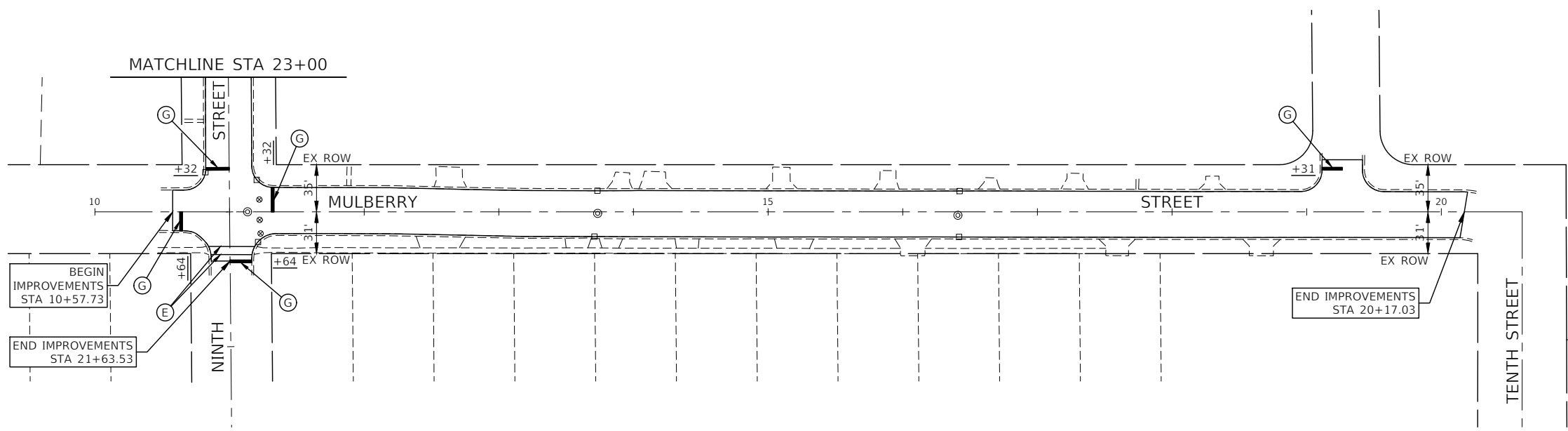
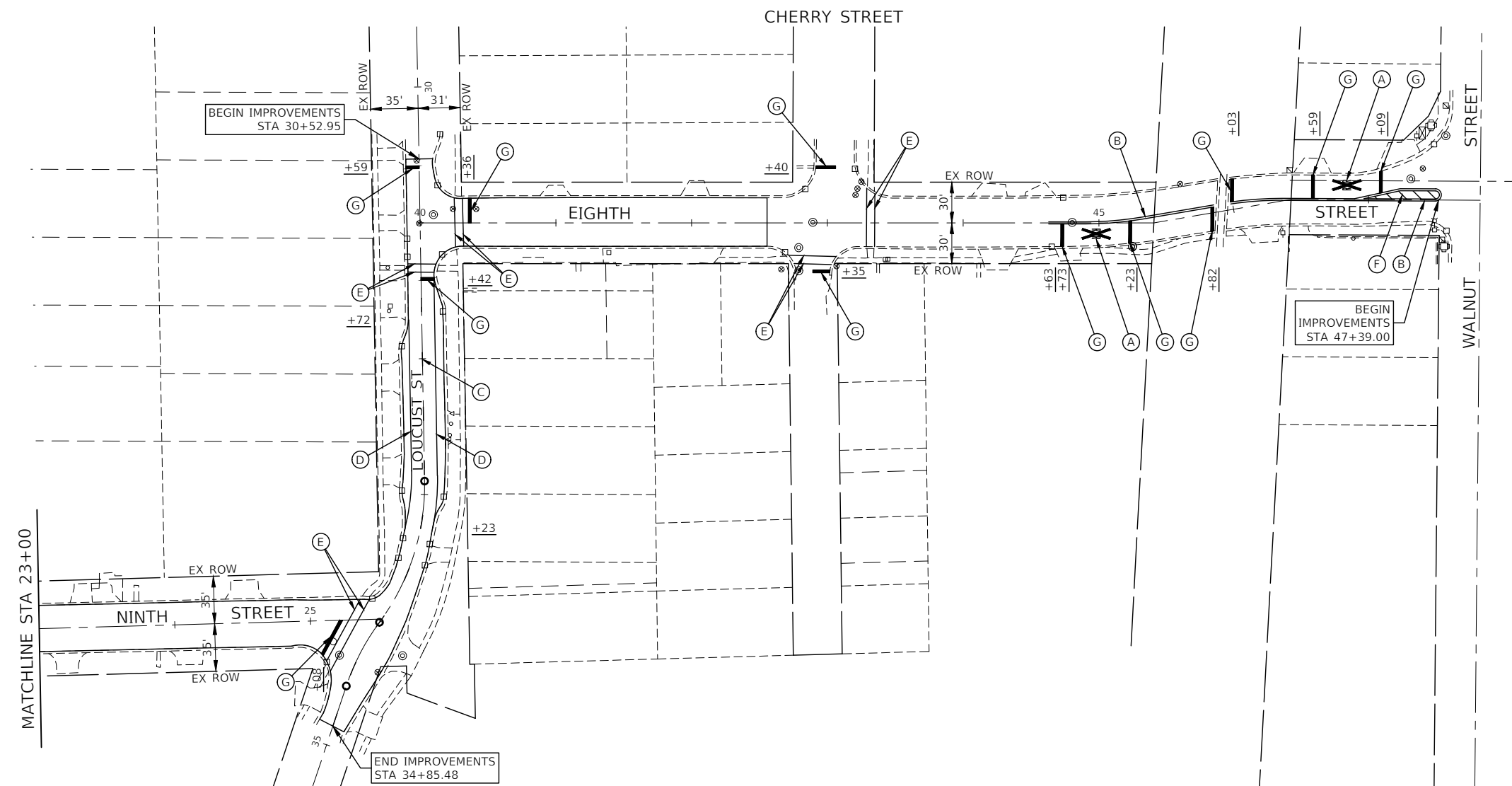
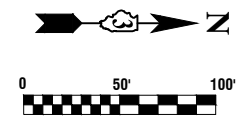
USER NAME =	DESIGNED -- JF	REVISED --
	CHECKED -- WD	REVISED --
PLOT SCALE =	DRAWN -- RG	REVISED --
PLOT DATE = 03-29-2023	CHECKED -- AG	REVISED --

**STATE OF ILLINOIS  
DEPARTMENT OF TRANSPORTATION**

**S. EIGHTH STREET  
ROADWAY RESURFACING  
PROPOSED IMPROVEMENT PLAN**

SCALE: 1"=50' SHEET NO. 9 OF 15 SHEETS STA. TO STA.

F.A.U. RTE.	SECTION	COUNTY	TOTAL SHEETS	SHEET NO.
6290	22-00066-00-RS	IROQUOIS	15	9
CONTRACT NO. 87809				
FED. ROAD DIST. NO. 3	ILLINOIS	FED. AID PROJECT	YXN0(346)	



- PAVEMENT MARKING LEGEND**
- (A) THERMOPLASTIC PAVEMENT MARKING - WHITE LETTERS & SYMBOLS
  - (B) THERMOPLASTIC PAVEMENT MARKING - LINE 4" DOUBLE YELLOW LINE (11" C-C)
  - (C) THERMOPLASTIC PAVEMENT MARKING - LINE 4" WHITE SKIP DASH (10' LINE-30' SPACE)
  - (D) THERMOPLASTIC PAVEMENT MARKING - LINE 4" WHITE LINE
  - (E) THERMOPLASTIC PAVEMENT MARKING - LINE 6" WHITE CROSS-WALK (6' C-C)
  - (F) THERMOPLASTIC PAVEMENT MARKING - LINE 12" YELLOW DIAGONAL LINE (75' C-C OR 5 EQUALLY SPACED)
  - (G) THERMOPLASTIC PAVEMENT MARKING - LINE 24" WHITE STOP BAR LINE

- NOTES**
1. SEE DISTRICT THREE URBAN PAVEMENT MARKING FOR GUIDANCE.
  2. ALL PAVEMENT MARKINGS SHALL BE THERMOPLASTIC UNLESS OTHERWISE SHOWN.

FILE NAME = 22R0384-PVMK-01 - PLAN-01

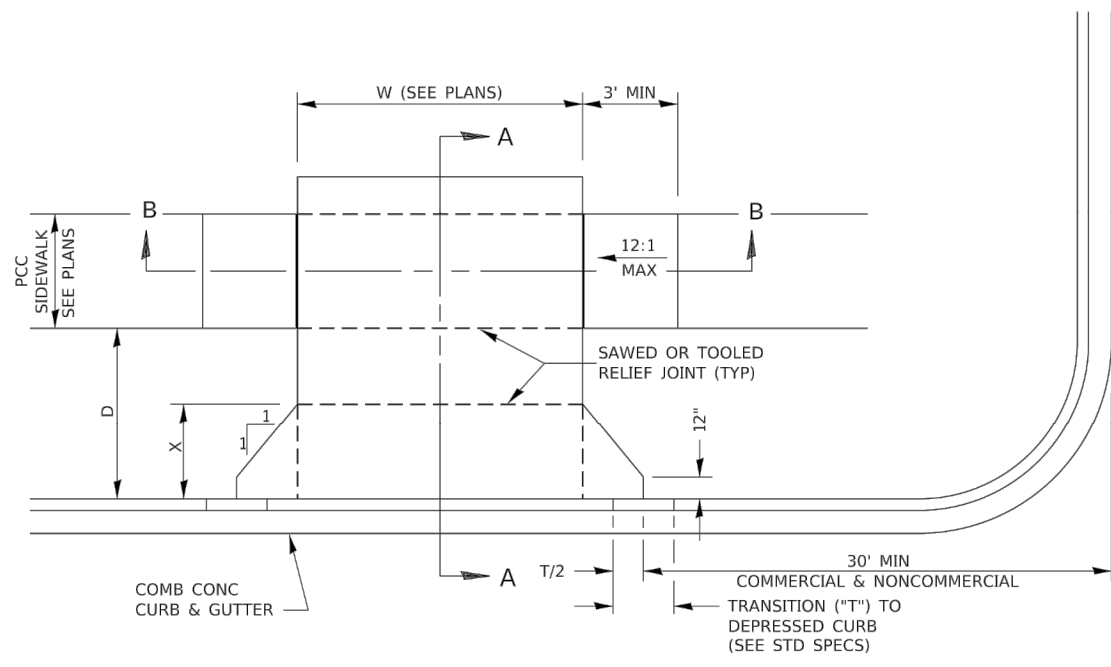
USER NAME =	DESIGNED -- JF	REVISED --
	CHECKED -- WD	REVISED --
PLOT SCALE =	DRAWN -- RG	REVISED --
PLOT DATE = 03-29-2023	CHECKED -- AG	REVISED --

**STATE OF ILLINOIS  
DEPARTMENT OF TRANSPORTATION**

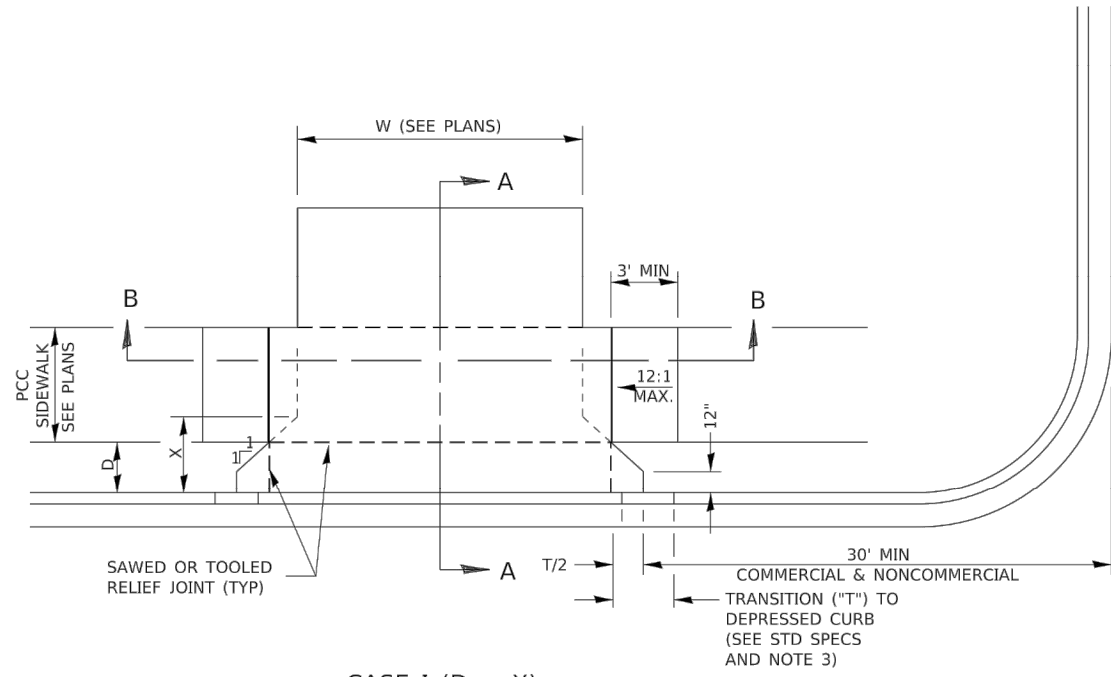
**S. EIGHTH STREET  
ROADWAY RESURFACING  
PAVEMENT MARKING PLAN**

SCALE: 1"=50'      SHEET NO. 10 OF 15 SHEETS      STA.      TO STA.

F.A.U. RTE.	SECTION	COUNTY	TOTAL SHEETS	SHEET NO.
6290	22-00066-00-RS	IROQUOIS	15	10
CONTRACT NO. 87809				
FED. ROAD DIST. NO. 3	ILLINOIS	FED. AID PROJECT	YNX0(346)	

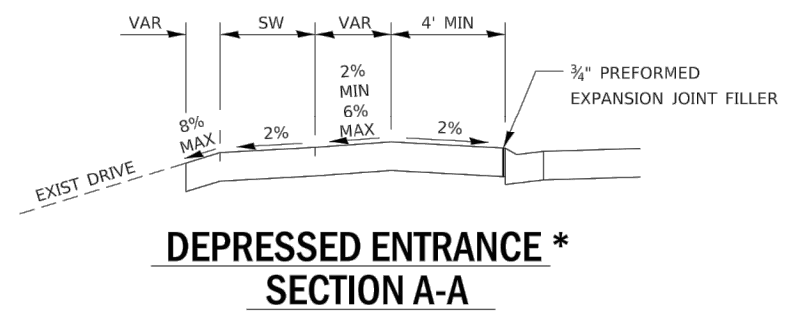


CASE I (D ≥ X)



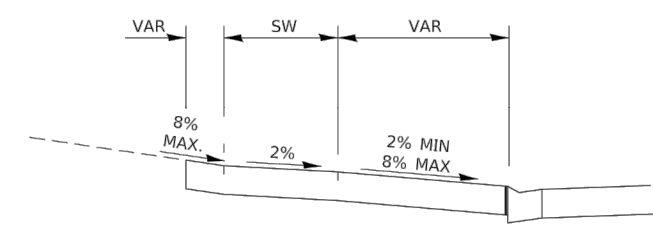
CASE I (D < X)

- GENERAL NOTES:
- X = 7' (NON-COMMERCIAL) X = 15' (COMMERCIAL)
  - COST OF EXPANSION JOINTS AND RELIEF JOINTS SHALL BE INCLUDED IN THE COST OF THE PCC DRIVEWAY PAVEMENT.
  - AS THE DIMENSION "D" APPROACHES ZERO, THE TRANSITION TO DEPRESSED CURB SHALL BE NO STEEPER THAN 12:1

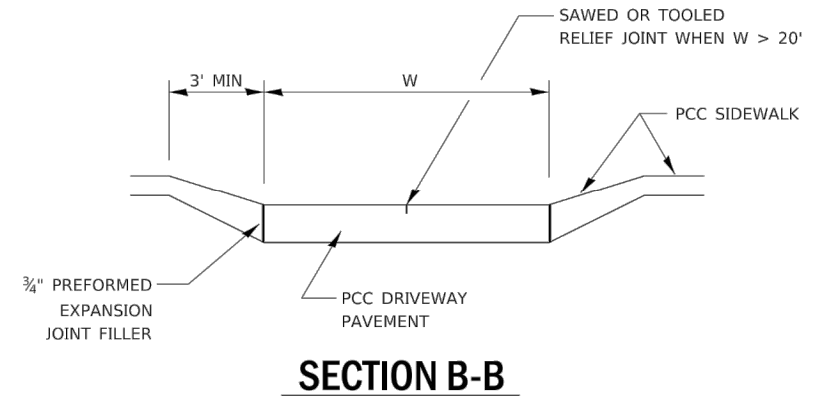


DEPRESSED ENTRANCE \*  
SECTION A-A

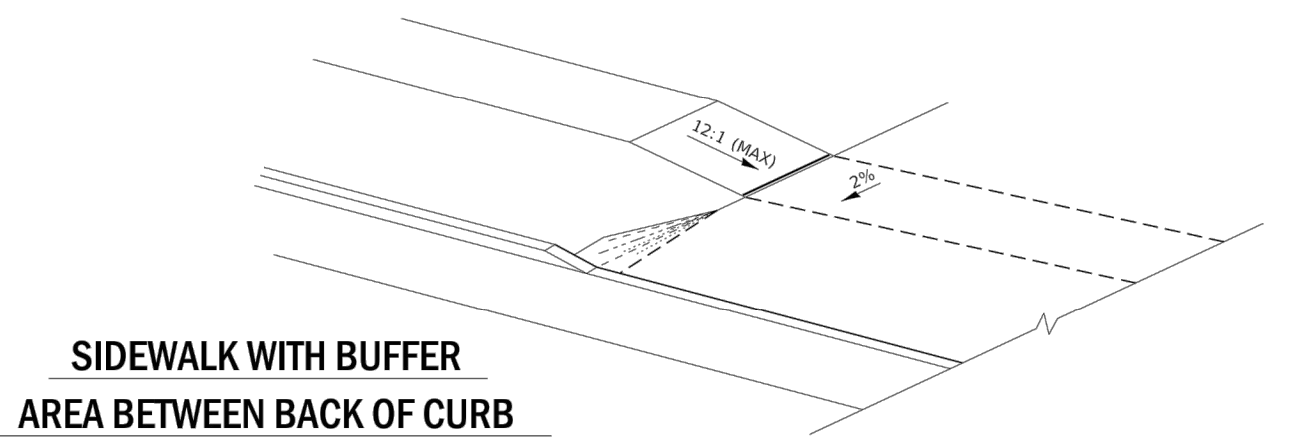
\*(SEE X-SECTIONS FOR ENTRANCE PROFILE.)



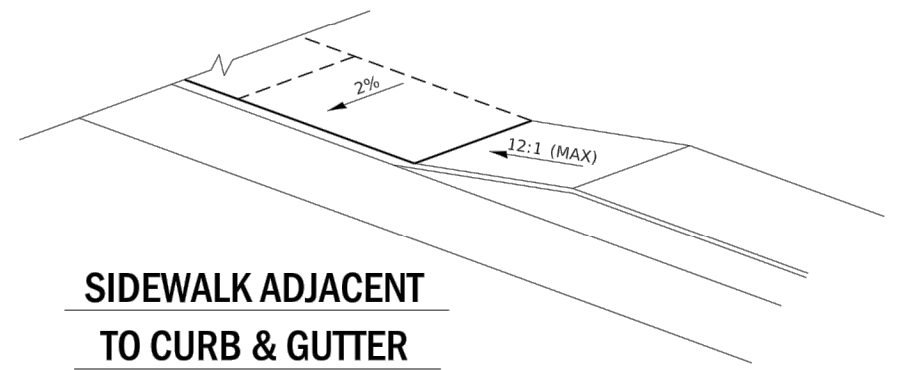
ELEVATED ENTRANCE \*  
SECTION A-A



SECTION B-B

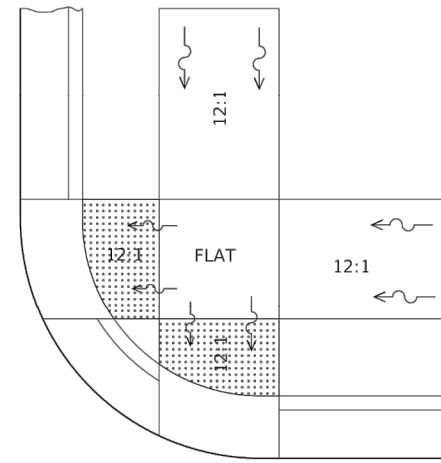
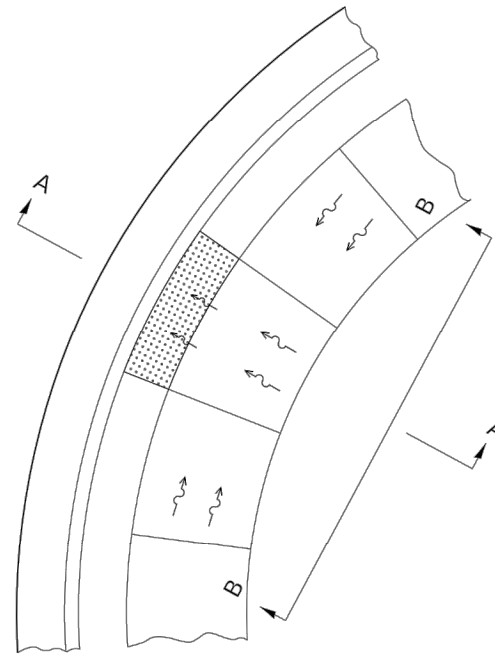


SIDEWALK WITH BUFFER  
AREA BETWEEN BACK OF CURB



SIDEWALK ADJACENT  
TO CURB & GUTTER

USER NAME =	DESIGNED --	REVISED --
	CHECKED --	REVISED --
PLOT SCALE =	DRAWN --	REVISED --
PLOT DATE =	CHECKED --	REVISED --



SEE STANDARD 424001 FOR SIDE FLARE  
DETAIL & SEE PLANS FOR RAMP TYPE.

NOTES:

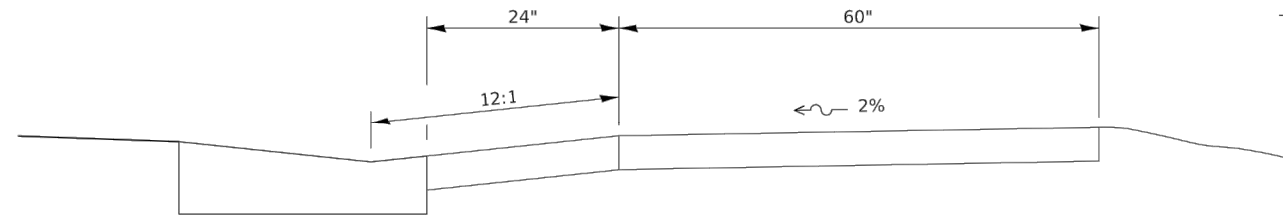
THIS DETAIL TO BE USED IN CONJUNCTION WITH STATE STANDARD 424001.

THE MAXIMUM ALLOWABLE CROSS SLOPE FOR SIDEWALK IS 2%.

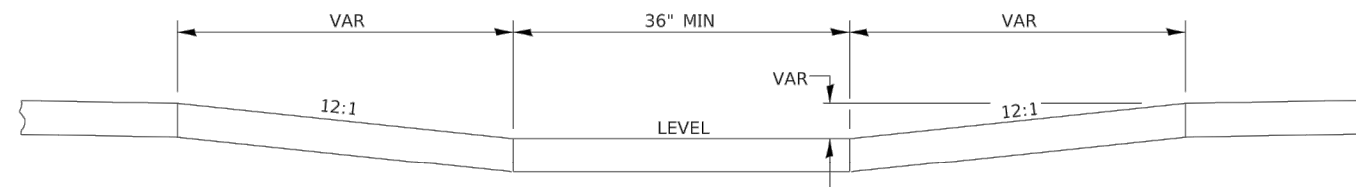
THE MAXIMUM ALLOWABLE SIDEWALK GRADE IS 8%.

IF SPACE LIMITATIONS PROHIBIT THE USE OF THE 12:1 SLOPE, THEN SLOPES BETWEEN 10:1 AND 12:1 ARE PERMITTED FOR A MAXIMUM RISE OF 6". SLOPES 8:1 AND 10:1 ARE ALLOWED FOR A MAXIMUM RISE OF 3". SLOPES STEEPER THAN 8:1 ARE NOT PERMITTED.

THE DEPRESSED CURB IS NOT STANDARD. THE RISE IS 1/2" INSTEAD OF 1 1/2".



SECTION A-A



SECTION B-B

**ADA SIDEWALK ACCESSIBILITY RAMP DETAIL**

**424-29**

FILE NAME = 22R0384-DTLS-01 - 424-29

USER NAME =	DESIGNED --	REVISED --
	CHECKED --	REVISED --
PLOT SCALE =	DRAWN --	REVISED --
PLOT DATE =	CHECKED --	REVISED --

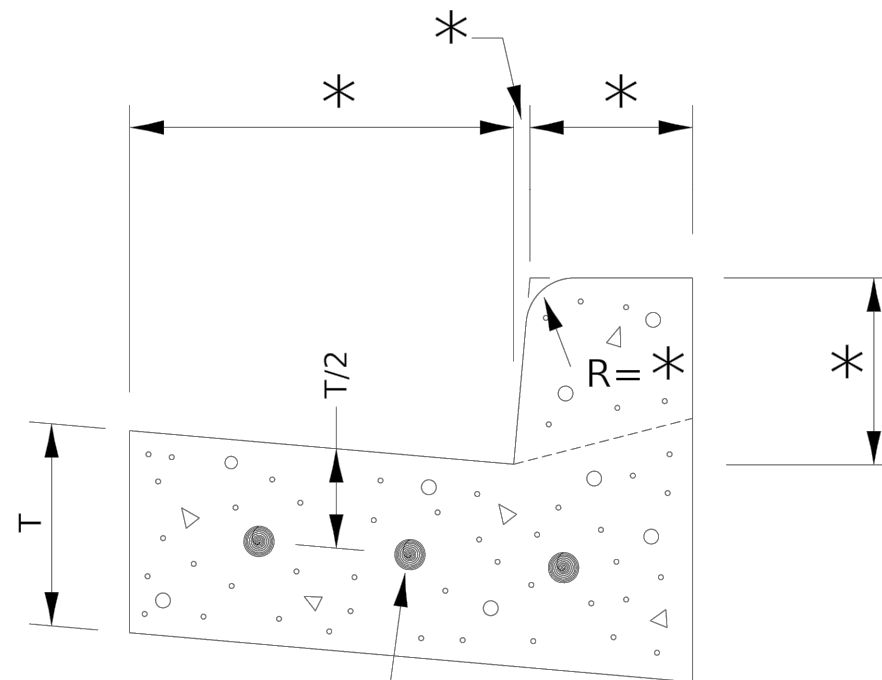
STATE OF ILLINOIS  
DEPARTMENT OF TRANSPORTATION

DISTRICT 3 DETAILS

SCALE: SHEET NO. 12 OF 15 SHEETS STA. TO STA.

F.A.U. RTE.	SECTION	COUNTY	TOTAL SHEETS	SHEET NO.
6290	22-00066-00-RS	IROQUOIS	15	12
FED. ROAD DIST. NO. 3 ILLINOIS FED. AID PROJECT YNX0(346)			CONTRACT NO. 87809	

\* VARIES - SEE STANDARD 606001



CONTINUOUSLY REINFORCED  
WITH 3 - #4 BARS  
EVENLY SPACED

REINFORCEMENT SHALL NOT BE PAID FOR  
SEPARATELY BUT WILL BE INCLUDED IN THE  
CONTRACT UNIT PRICE FOR CC&G.

**REINFORCEMENT DETAIL  
FOR  
COMBINATION CONCRETE  
CURB AND GUTTER**

**606-4**

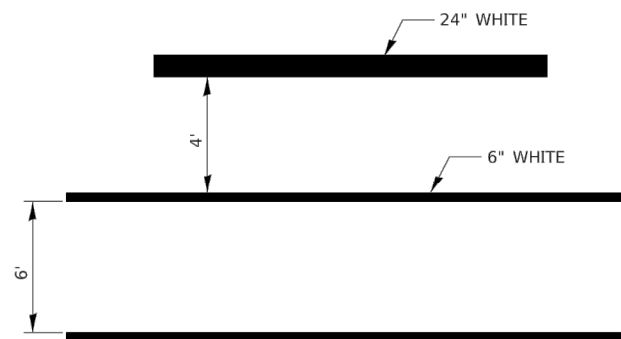
FILE NAME = 22R0384-DTLS-01 - 602-2	USER NAME =	DESIGNED --	REVISED --
		CHECKED --	REVISED --
	PLOT SCALE =	DRAWN --	REVISED --
	PLOT DATE =	CHECKED --	REVISED --

STATE OF ILLINOIS  
DEPARTMENT OF TRANSPORTATION

DISTRICT 3 DETAILS

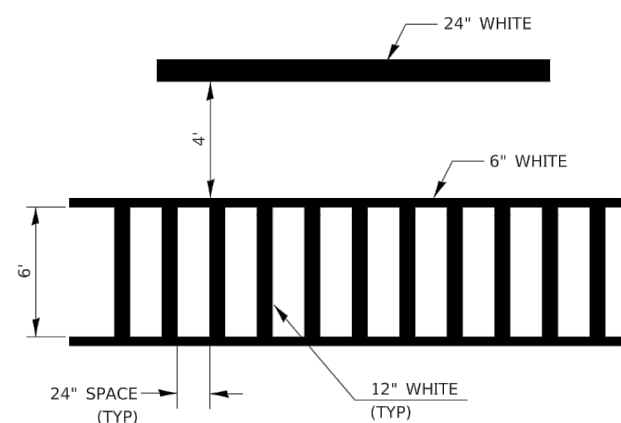
SCALE: SHEET NO. 13 OF 15 SHEETS STA. TO STA.

F.A.U. RTE.	SECTION	COUNTY	TOTAL SHEETS	SHEET NO.
6290	22-00066-00-RS	IROQUOIS	15	13
CONTRACT NO. 87809				
FED. ROAD DIST. NO. 3 ILLINOIS FED. AID PROJECT YNX0(346)				



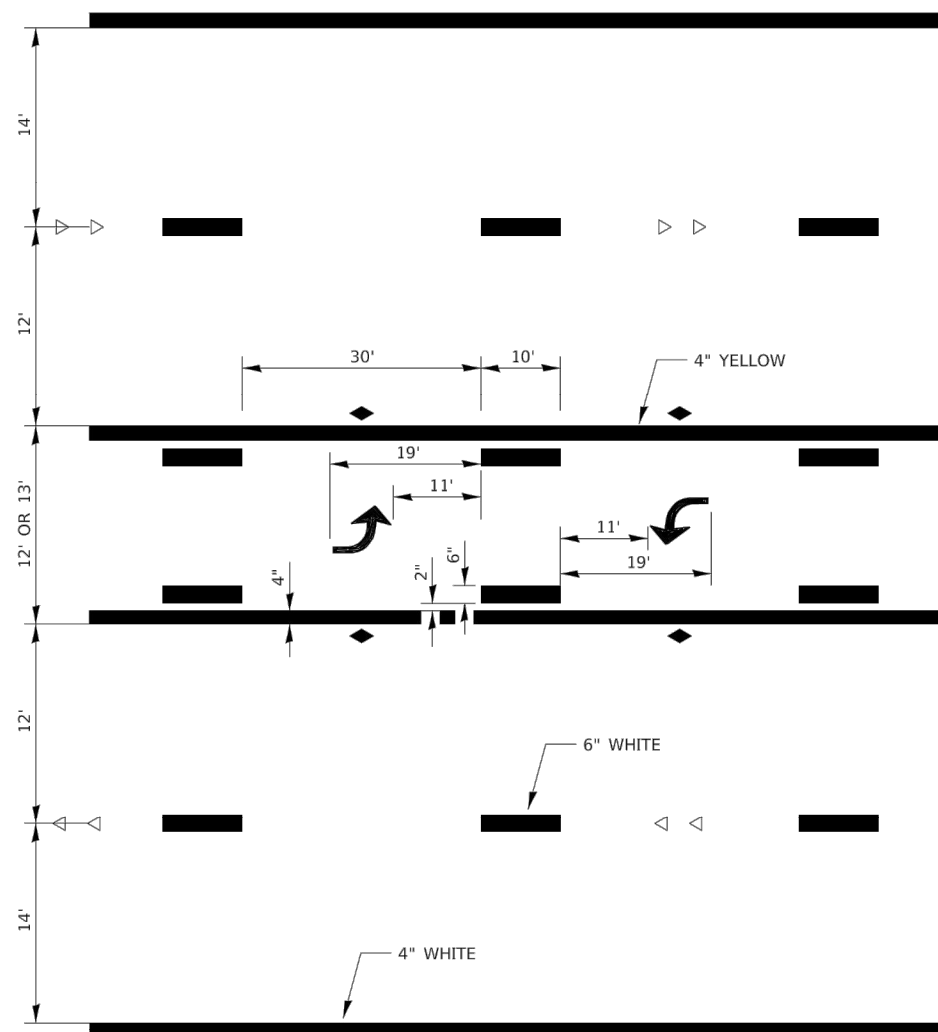
**TYPICAL SPACING DETAIL FOR  
CROSSWALKS AND STOP BARS**

**780-3  
OPTION 1**



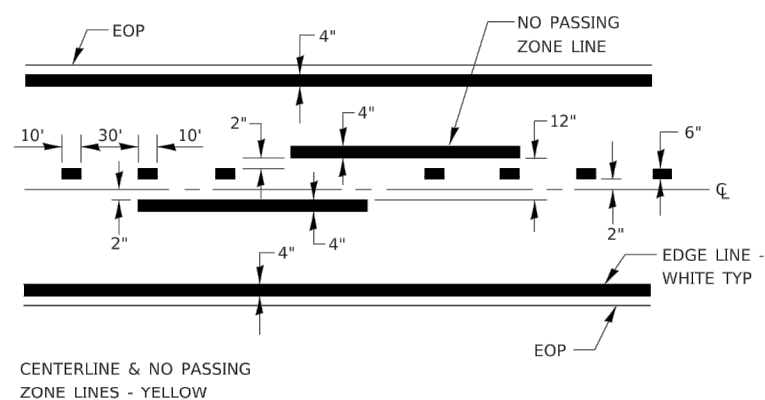
**TYPICAL SPACING DETAIL FOR  
CROSSWALKS AND STOP BARS**

**780-3  
OPTION 2**



**TYPICAL APPLICATION @  
TWO WAY LEFT TURN LANE (TWLTL)**

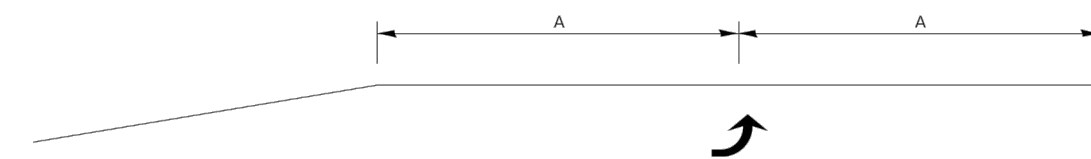
**780-2**



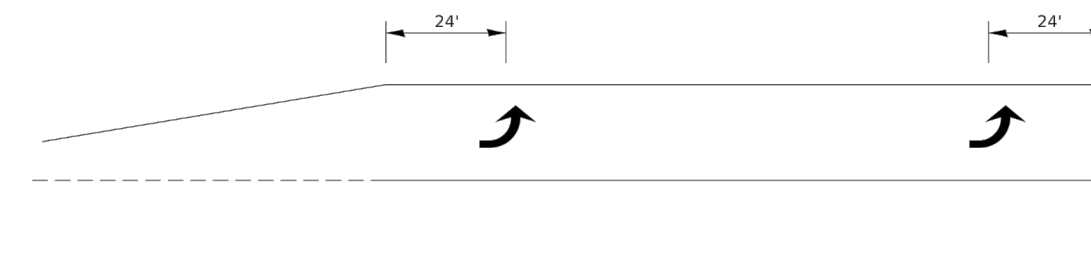
CENTERLINE & NO PASSING  
ZONE LINES - YELLOW

**PAVEMENT MARKING**

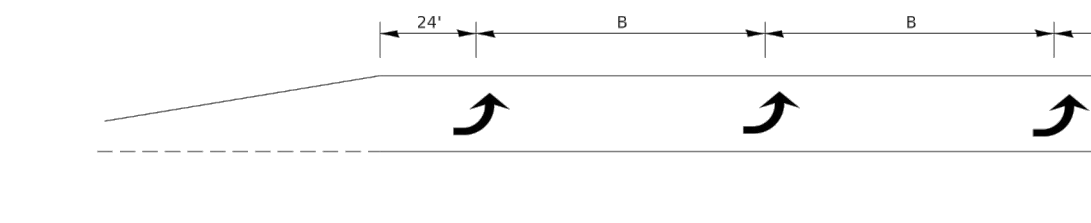
**780-8**



**99' AND UNDER**



**100' TO 149'**



**150' AND LONGER**

**TYPICAL PLACEMENT OF ARROWS  
IN TURN LANES**

**780-10**

# URBAN PAVEMENT MARKING

FILE NAME = 22R0384-DTLS-01 - 780-08

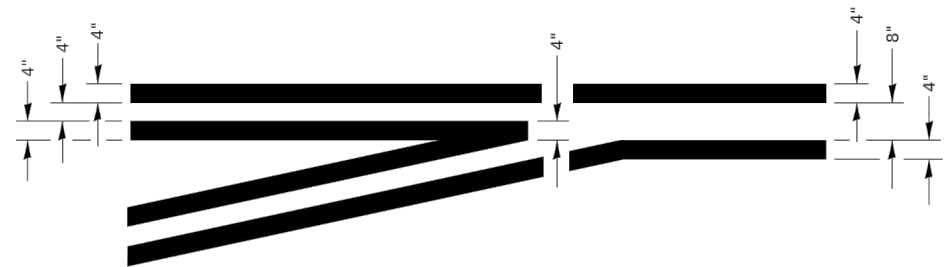
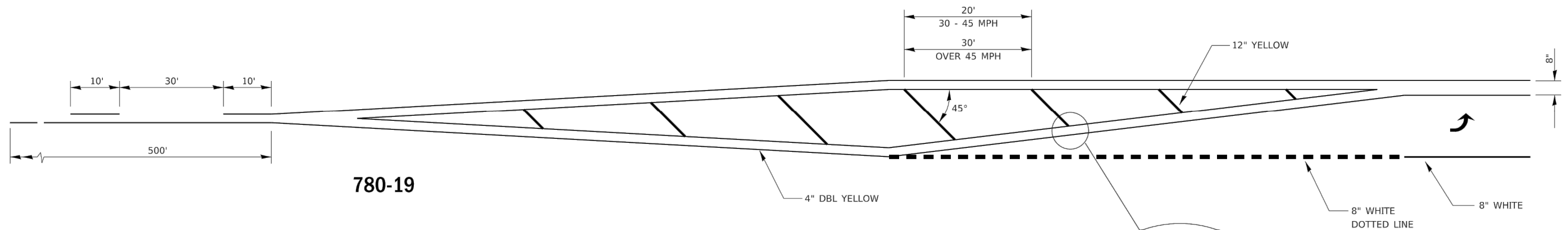
USER NAME =	DESIGNED --	REVISED --
	CHECKED --	REVISED --
PLOT SCALE =	DRAWN --	REVISED --
PLOT DATE =	CHECKED --	REVISED --

STATE OF ILLINOIS  
DEPARTMENT OF TRANSPORTATION

DISTRICT 3 DETAILS URBAN PAVEMENT MARKING	
SCALE:	SHEET NO. 14 OF 15 SHEETS STA. TO STA.

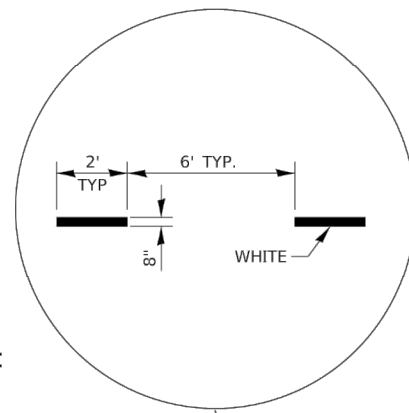
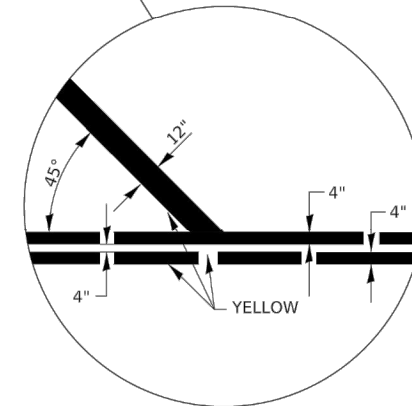
F.A.U. RTE.	SECTION	COUNTY	TOTAL SHEETS	SHEET NO.
6290	22-00066-00-RS	IROQUOIS	15	14
CONTRACT NO. 87809				
FED. ROAD DIST. NO. 3 ILLINOIS FED. AID PROJECT YNX0(346)				





**TYPICAL APPLICATION  
@ LEFT TURN LANES**

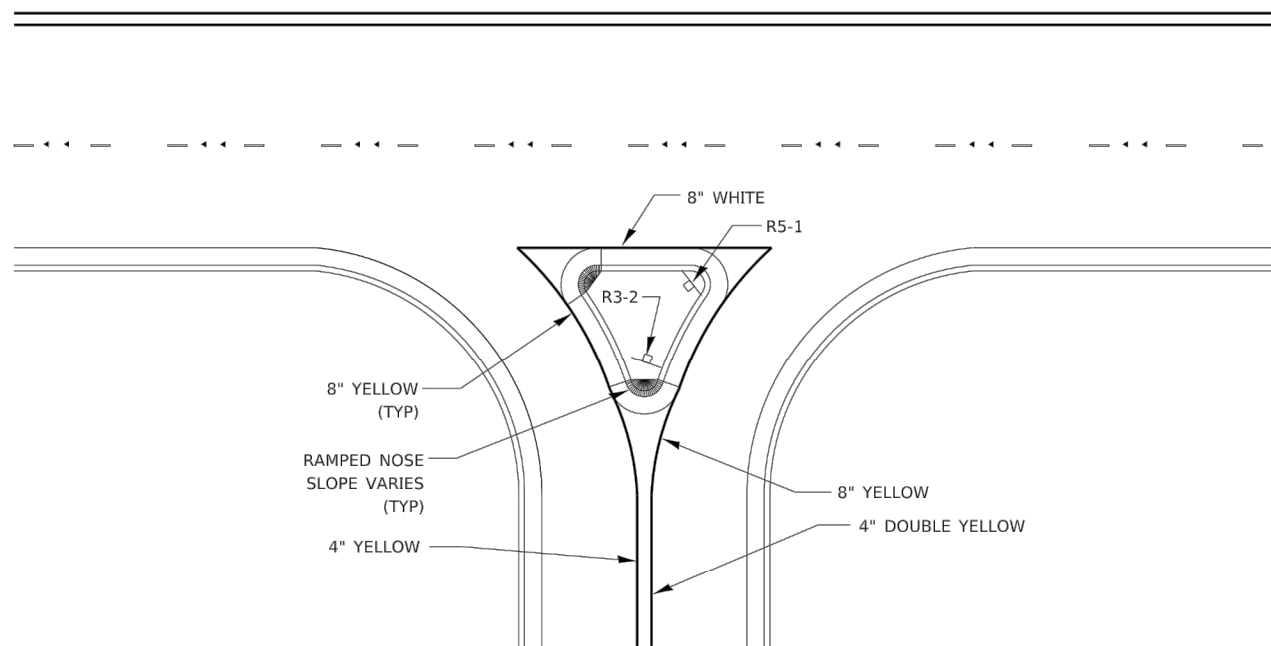
**780-1**



**ADVANCE AND INTERSECTION LANE  
DIVIDER LINES**

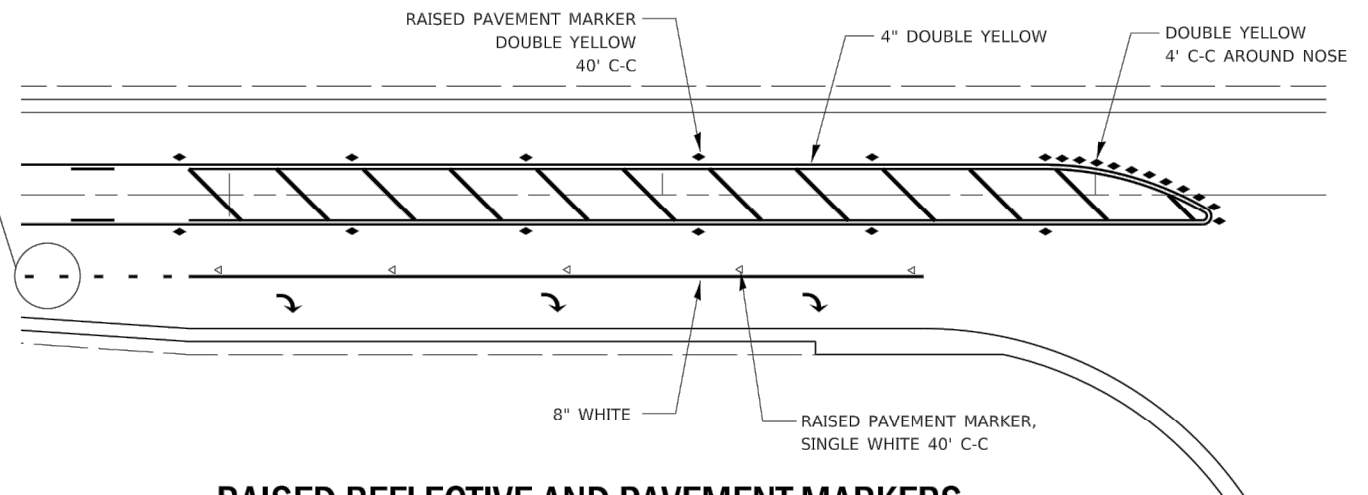
**780-5**

# URBAN PAVEMENT MARKING



**RIGHT IN RIGHT OUT ACCESS PAVEMENT MARKING**

**780-16**



**RAISED REFLECTIVE AND PAVEMENT MARKERS  
@ RIGHT TURN LANE**

**781-1**

FILE NAME = 22R0384-DTLS-01 - 780-16

USER NAME =	DESIGNED --	REVISED --
	CHECKED --	REVISED --
PLOT SCALE =	DRAWN --	REVISED --
PLOT DATE =	CHECKED --	REVISED --

STATE OF ILLINOIS  
DEPARTMENT OF TRANSPORTATION

DISTRICT 3 DETAILS  
URBAN PAVEMENT MARKING

SCALE: SHEET NO. 15 OF 15 SHEETS STA. TO STA.

F.A.U. RTE.	SECTION	COUNTY	TOTAL SHEETS	SHEET NO.
6290	22-00066-00-RS	IROQUOIS	15	15
CONTRACT NO. 87809				
FED. ROAD DIST. NO. 3 ILLINOIS FED. AID PROJECT YNX0(346)				