



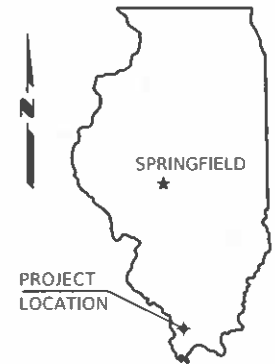
06-16-2023 LETTING ITEM 205

STATE OF ILLINOIS
DEPARTMENT OF TRANSPORTATION

PLANS FOR PROPOSED SURFACE TRANSPORTATION PROGRAM

FAS ROUTE 1926 (WING HILL ROAD)
SECTION 21-00215-00-RS
PROJECT NO. P1UL(168)
JOB NO. C-99-004-23

ROUTE	SECTION	COUNTY	TOTAL SHEETS	SHEET NO.
FAS 1926	21-00215-00-RS	UNION	7	1
PROJECT NO. P1UL(168)			CONTRACT NO. 99701	

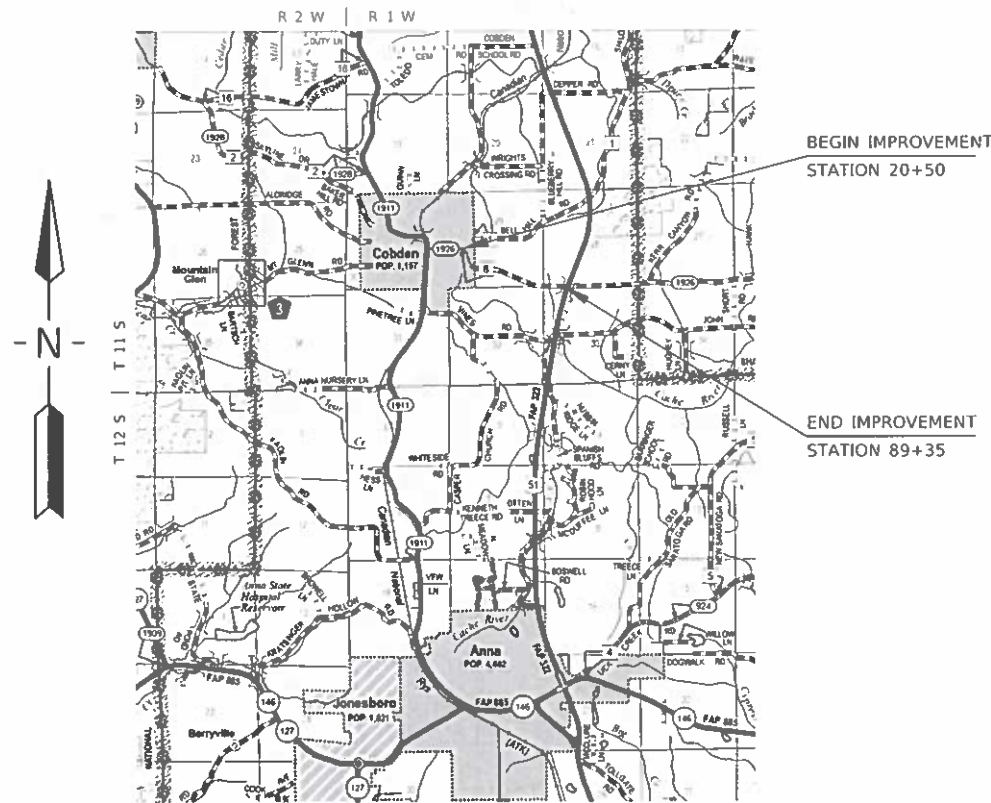


INDEX OF SHEETS

1. COVER SHEET
2. QUANTITIES & SCHEDULES
3. TYPICAL SECTIONS & GENERAL NOTES
- 4-6. PLAN SHEETS
7. MISCELLANEOUS DETAILS

STANDARDS		
701001-02	TRAFFIC CONTROL	
701006-05	TRAFFIC CONTROL	
701011-04	TRAFFIC CONTROL	
701301-04	TRAFFIC CONTROL	
701306-04	TRAFFIC CONTROL	
701311-03	TRAFFIC CONTROL	
701901-08	TRAFFIC CONTROL DEVICES	
720001-01	SIGN PANEL MOUNTING DETAILS	
720006-04	SIGN PANEL ERECTION DETAILS	
780001-05	TYPICAL PAVEMENT MARKINGS	
781001-04	RAISED REFLECTIVE PAVEMENT MARKERS	
BLR 24-2	MAILBOX TURNOUT	

UNION COUNTY



PREVIOUSLY CONSTRUCTED
AS SECTION 31G - MFT

CLASSIFICATION : MINOR ARTERIAL
ADT : 1,350
DESIGN SPEED : 50 MPH

CONTRACT NO. 99701



Kevin Phillips
Kevin Phillips
PROFESSIONAL ENGINEER
#062-047293
EXPIRES NOV. 30, 2023

Round Table Design, Inc.
PROFESSIONAL ENGINEERING - LAND SURVEYING
1020 MAIN STREET MT. VERNON, IL (618) 244-7819

LOCATION MAP

SCALE: 1" = 2 MILES

NET LENGTH OF IMPROVEMENT = 6,885.00 FT. = 1.3040 MILES

ILLINOIS DEPARTMENT OF TRANSPORTATION	
Approved	<u>FEB. 16, 23</u> <i>[Signature]</i> Union County Engineer
Passed	<u>4/10/23</u> <i>[Signature]</i> District 9 Engineer of Local Roads and Streets
Releasing for Bid Based on Limited Review	<u>4/10/23</u> <i>[Signature]</i> Kirk H. Brown Region Five Engineer

ROUTE	SECTION	COUNTY	TOTAL SHEETS	SHEET NO.
FAS 1926	21-00215-00-R5	UNION	7	2
PROJECT NO. P1UL(168)			CONTRACT NO. 99701	

SUMMARY OF QUANTITIES

CODE NO.	PAY ITEM	UNIT	TOTAL
X7010216	TRAFFIC CONTROL AND PROTECTION, (SPECIAL)	L SUM	1
XX005569	MAILBOX REMOVAL AND REINSTALLATION	EACH	18
40200800	AGGREGATE SURFACE COURSE, TYPE B	TON	25
40600290	BITUMINOUS MATERIALS (TACK COAT)	POUND	11,950
40600982	HOT-MIX ASPHALT SURFACE REMOVAL - BUTT JOINT	SQ YD	173
40600370	LONGITUDINAL JOINT SEALANT	FOOT	6,885
40600990	TEMPORARY RAMP	SQ YD	38
40602970	HOT-MIX ASPHALT BINDER COURSE, IL-9.5FG, N70	TON	2,760
40604052	HOT-MIX ASPHALT SURFACE COURSE, IL-9.5, MIX "C", N70	TON	1,240
48102100	AGGREGATE WEDGE SHOULDER, TYPE B	TON	1,950
54390180	INSERTION CULVERT LINER 24"	FOOT	198
54390260	INSERTION CULVERT LINER 48"	FOOT	64
54390310	INSERTION CULVERT LINER 60"	FOOT	114
67100100	MOBILIZATION	L SUM	1
* 72000100	SIGN PANEL - TYPE 1	SQ FT	53
* 73000100	WOOD SIGN SUPPORT	FOOT	145
* 78000650	THERMOPLASTIC PAVEMENT MARKING - LINE 24"	FOOT	37
* 78001110	PAINT PAVEMENT MARKING - LINE 4"	FOOT	23,720
* 78100100	RAISED REFLECTIVE PAVEMENT MARKER	EACH	100

*SPECIALTY ITEMS

PAINT PAVEMENT MARKING - LINE 4" (FT)			
Location	Centerline (Yellow Dashed)	Edge Line (White Solid)	No Passing (Yellow Solid)
Sta 20+50 to Sta 89+20	1,100	13,740	8,880

See Standard 780001 for typical pavement markings.

SCHEDULE OF "NO PASSING ZONES"			
WEST BOUND (LEFT) LANE		EAST BOUND (RIGHT) LANE	
Location	Length	Location	Length
Sta 20+50 to Sta 27+00	650'	Sta 20+50 to Sta 22+00	150'
Sta 31+00 to Sta 43+60	1,260'	Sta 26+00 to Sta 35+60	960'
Sta 47+60 to Sta 54+25	665'	Sta 39+60 to Sta 46+25	665'
Sta 60+50 to Sta 73+90	1,340'	Sta 53+40 to Sta 65+90	1,250'
Sta 83+25 to Sta 89+20	595'	Sta 75+75 to Sta 89+20	1,345'
TOTALS	4,510'		4,370'

SIGN SCHEDULE				
Location	Name	Signs		Post Length
		No.	Sq. Ft.	
Sta 26+00 Lt	NO PASSING	W14-3	5.55	16.0
Sta 27+00 Rt	NO PASSING	W14-3	5.55	16.0
Sta 38+50 Lt	CURVE	W1-2	6.25	17.0
	ADVISORY SPEED	W13-1P(30)	2.25	
Sta 39+60 Lt	NO PASSING	W14-3	5.55	16.0
Sta 43+60 Rt	NO PASSING	W14-3	5.55	16.0
Sta 53+40 Lt	NO PASSING	W14-3	5.55	16.0
Sta 54+25 Rt	NO PASSING	W14-3	5.55	16.0
Sta 73+90 Rt	NO PASSING	W14-3	5.55	16.0
Sta 75+75 Lt	NO PASSING	W14-3	5.55	16.0
TOTALS			52.9	145.0

NOTE: Mount "No Passing Zone" signs on one post.

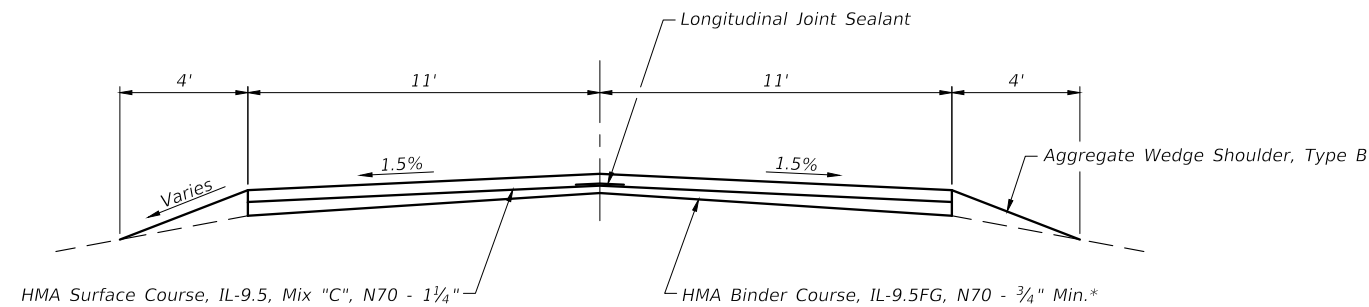
SUMMARY OF QUANTITIES
& SCHEDULES
FAS ROUTE 1926 (WING HILL ROAD)
SECTION 21-00215-00-R5
PROJECT NO. P1UL(168)
UNION COUNTY

ROUTE	SECTION	COUNTY	TOTAL SHEETS	SHEET NO.
FAS 1926	21-00215-00-RS	UNION	7	3
PROJECT NO. P1UL(168)			CONTRACT NO. 99701	

GENERAL NOTES

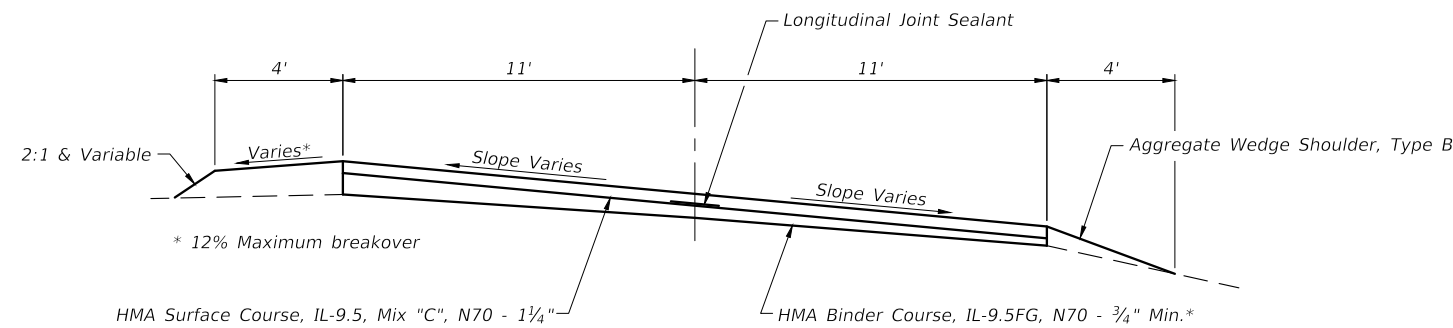
1. This section shall be constructed in accordance with the Plans, Special Provisions, and the "Standard Specifications for Road and Bridge Construction", adopted January 1, 2022.
2. Utilities shown were located from visible facilities and surface markings only. Utilities shall be field located horizontally and vertically prior to beginning any work. The Contractor is responsible for the field location of these utilities.
3. It shall be the Contractors responsibility to verify all existing field dimensions and conditions prior to construction and ordering materials.
4. Any reference to a Standard in these plans shall be interpreted to mean the edition indicated by the subnumber listed on the Index of Sheets or the copy of the Standard included in the plans.
5. Factors used for quantity calculations are as follows:

Hot-Mix Asphalt	112.0 Lbs/Sq Yd/Inch
Aggregate	2.025 Tons/Cu Yd
Bit Materials (Prime Coat), on Agg Base	0.25 Lbs/Sq Ft
Bit Materials (Tack Coat), on Oil&Chip Base	0.05 Lbs/Sq Ft
on HMA Lift	0.025 Lbs/Sq Ft



TYPICAL SECTION

* NOTE: Crown and/or superelevation correction shall be completed prior to placing the full lift of HMA Binder Course.



TYPICAL SECTION THRU CURVE

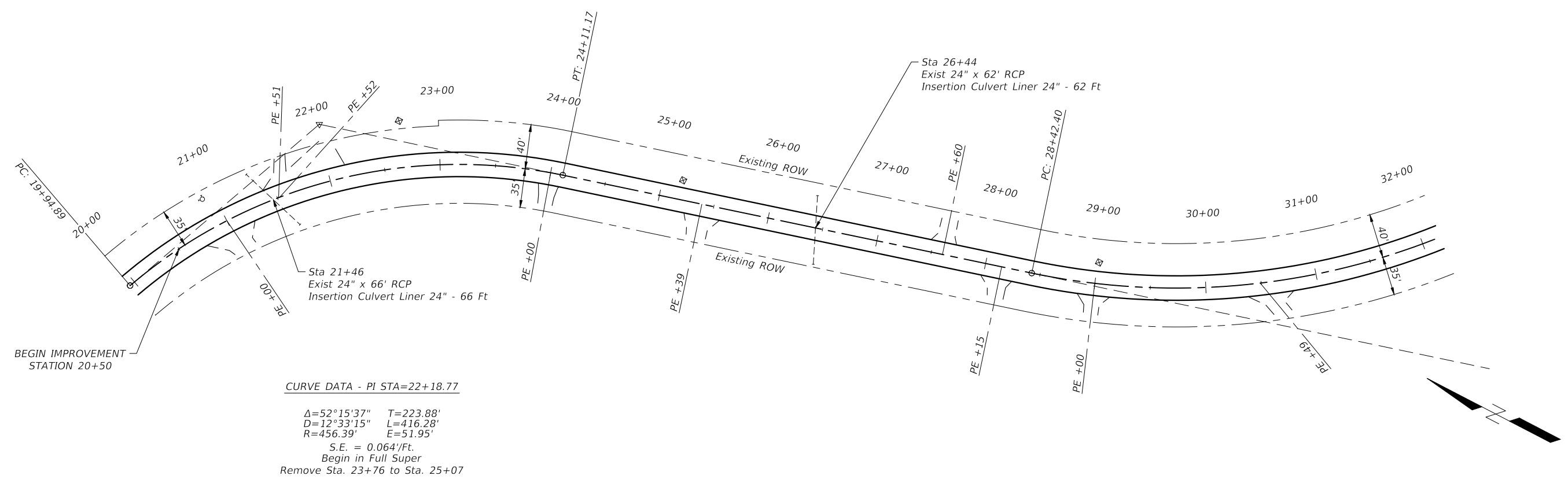
Right curve shown. Reverse for left curve.

HOT-MIX ASPHALT MIXTURE REQUIREMENTS

Mixture Use:	HMA Binder Cse, IL-9.5FG, N70	HMA Surface Cse, IL-9.5 Mix C, N70
PG:	PG 64-22	PG 64-22
RAP% (Max):	10	10
Design Air Voids:	4% @ Ndes 70	4% @ Ndes 70
Mixture Composition: (Gradation Mixture)	IL-9.5mm	IL-9.5mm
Friction Aggregate:	None	C Surface

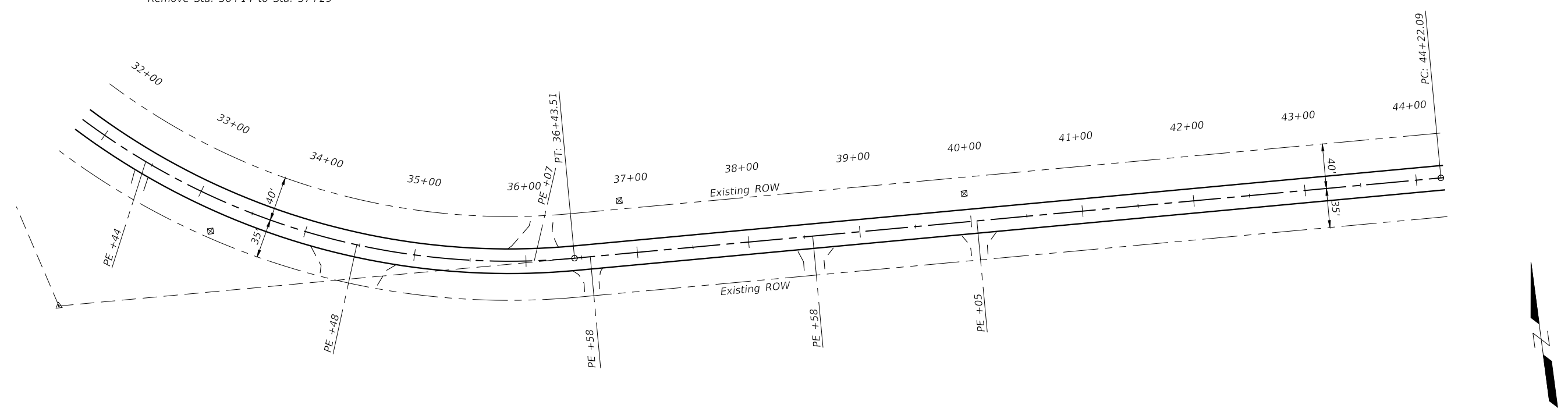
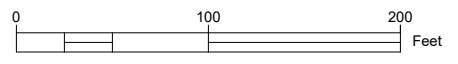
TYPICAL SECTIONS
& GENERAL NOTES
FAS ROUTE 1926 (WING HILL ROAD)
SECTION 21-00215-00-RS
PROJECT NO. P1UL(168)
UNION COUNTY

ROUTE	SECTION	COUNTY	TOTAL SHEETS	SHEET NO.
FAS 1926	21-00215-00-RS	UNION	7	4
PROJECT NO. P1UL(168)			CONTRACT NO. 99701	

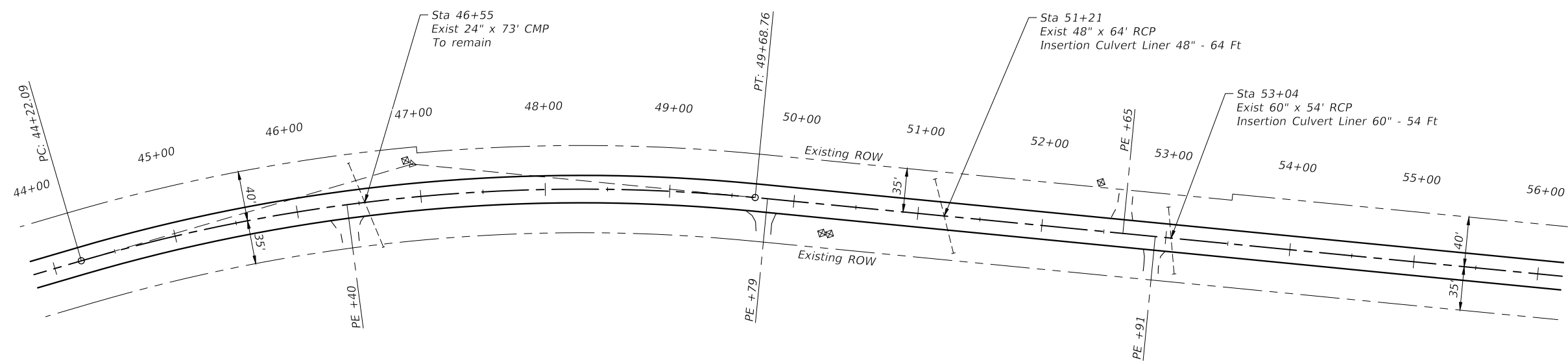


CURVE DATA - PI STA=33+05.78

$\Delta=72^{\circ}06'00''$ $T=463.38'$
 $D=9^{\circ}00'00''$ $L=801.11'$
 $R=636.62'$ $E=150.79'$
 S.E. = 0.054'/Ft.
 Attain Sta. 27+58 to Sta. 28+73
 Remove Sta. 36+14 to Sta. 37+29

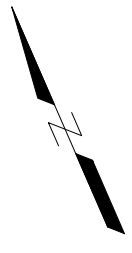
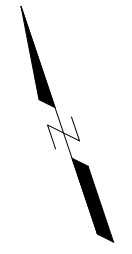
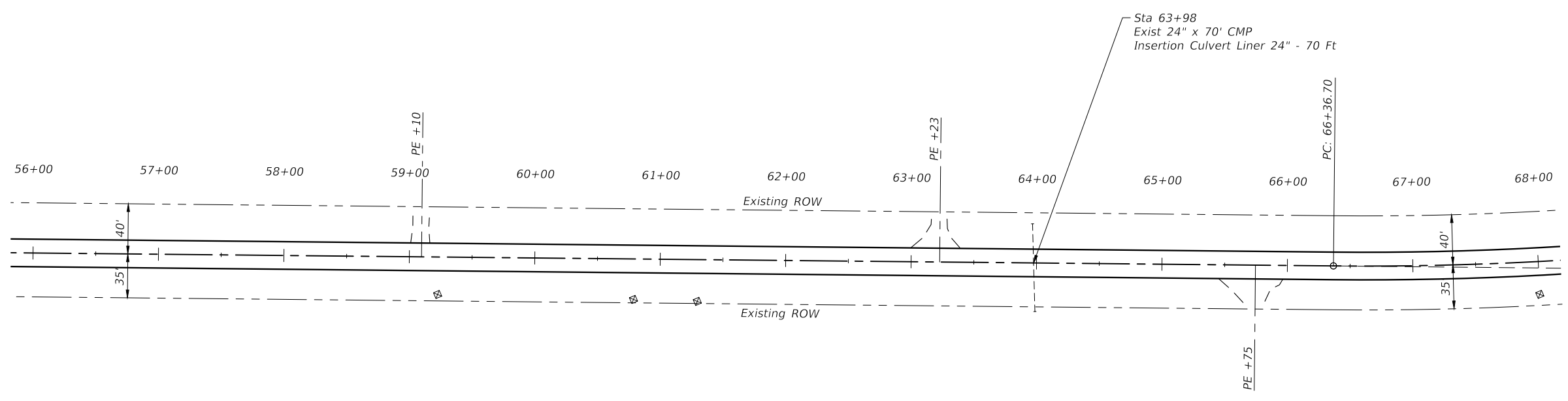
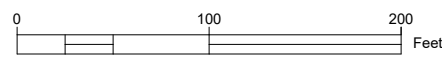


ROUTE	SECTION	COUNTY	TOTAL SHEETS	SHEET NO.
FAS 1926	21-00215-00-RS	UNION	7	5
PROJECT NO. P1UL(168)			CONTRACT NO. 99701	



CURVE DATA - PI STA=46+98.79

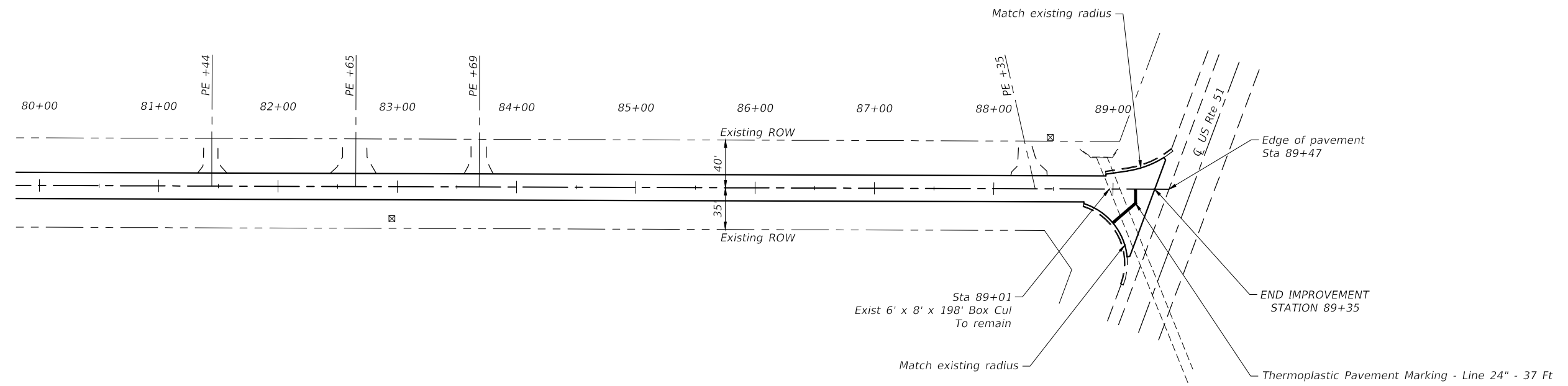
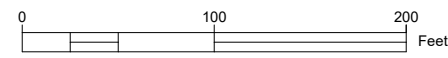
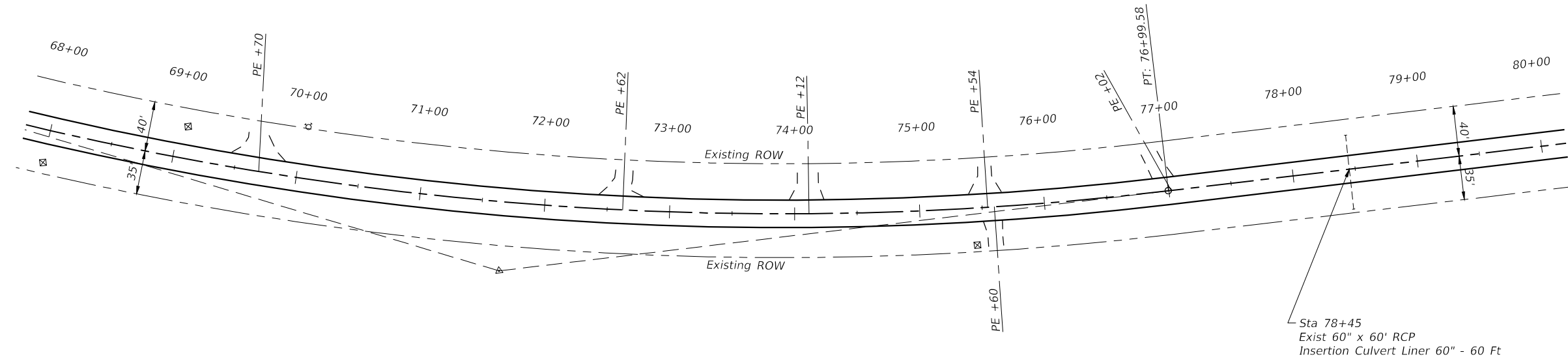
$\Delta=21^{\circ}52'00''$ $T=276.70'$
 $D=4^{\circ}00'00''$ $L=546.67'$
 $R=1432.39'$ $E=26.48'$
 $S.E. = 0.064'/ft.$
 Attain Sta. 42+95 to Sta. 44+70
 Remove Sta. 49+22 to Sta. 50+96



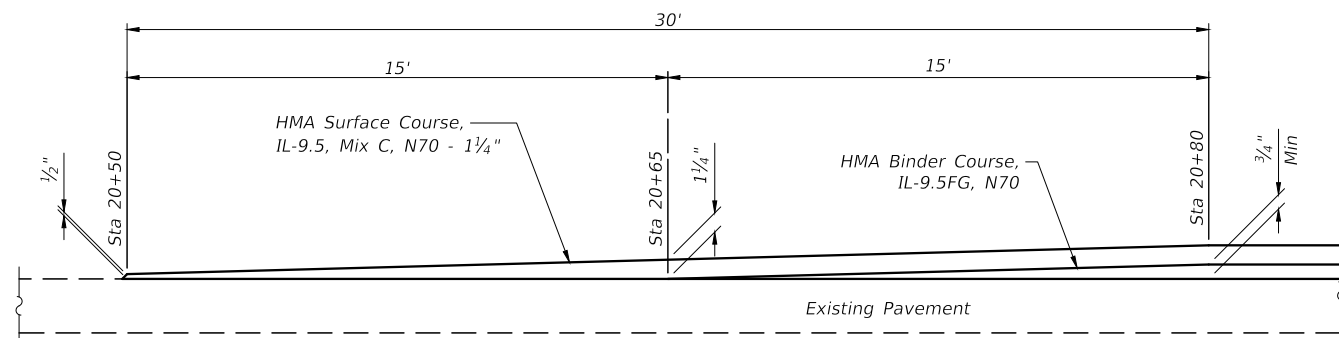
CURVE DATA - PI STA=71+75.64

$\Delta=23^{\circ}23'00''$ $T=538.94'$
 $D=2^{\circ}12'00''$ $L=1062.88'$
 $R=2604.35'$ $E=55.18'$
 $S.E. = 0.042'/ft.$
 Attain Sta. 65+42 to Sta. 66+68
 Remove Sta. 76+69 to Sta. 77+95

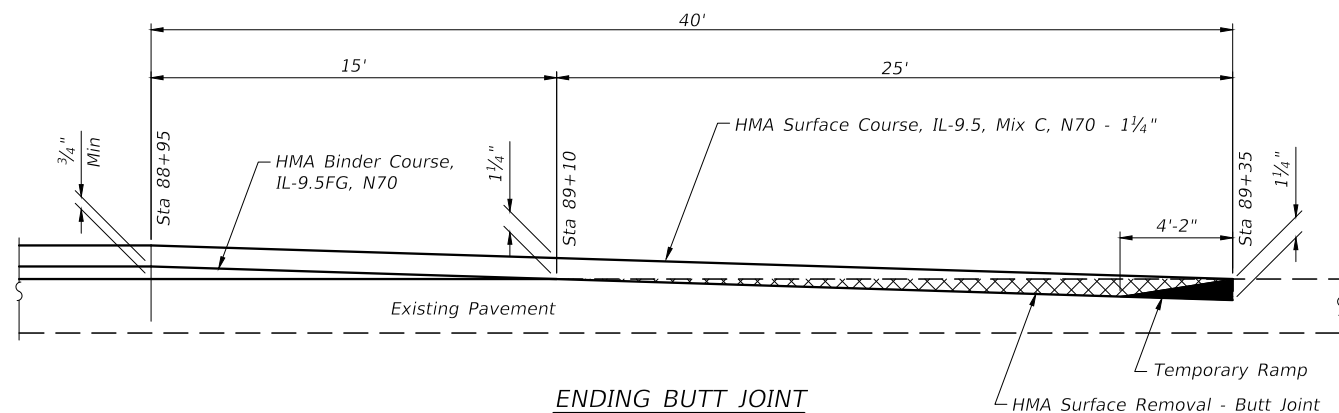
ROUTE	SECTION	COUNTY	TOTAL SHEETS	SHEET NO.
FAS 1926	21-00215-00-RS	UNION	7	6
PROJECT NO. P1UL(168)			CONTRACT NO. 99701	



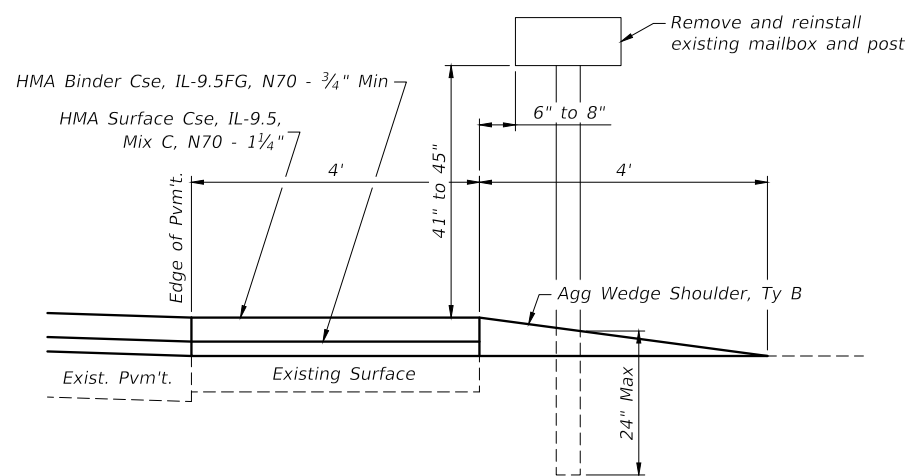
ROUTE	SECTION	COUNTY	TOTAL SHEETS	SHEET NO.
FAS 1926	21-00215-00-RS	UNION	7	7
PROJECT NO. P1UL(168)			CONTRACT NO. 99701	



BEGINNING TAPER



ENDING BUTT JOINT



TYPICAL MAILBOX TURNOUT
(See Standard BLR 24 for more details)

25+15 Rt
27+60 Rt
30+45 Rt
34+06 Rt
36+10 Rt
39+86 Rt
49+99 Rt
53+09 Rt
59+23 Rt
62+62 Rt
65+94 Rt
69+08 Rt
72+37 Rt
75+73 Rt
77+18 Rt
82+45 Rt
83+67 Rt
88+39 Rt

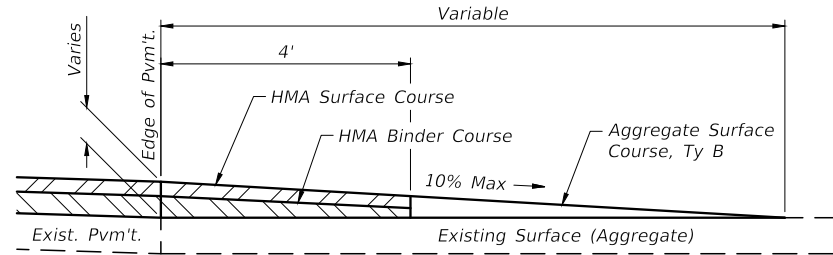
NOTES

Where asphalt is to be placed, the existing surface shall receive prime or tack coat. (Rates specified elsewhere). HMA type and thickness shall match the mainline resurfacing.

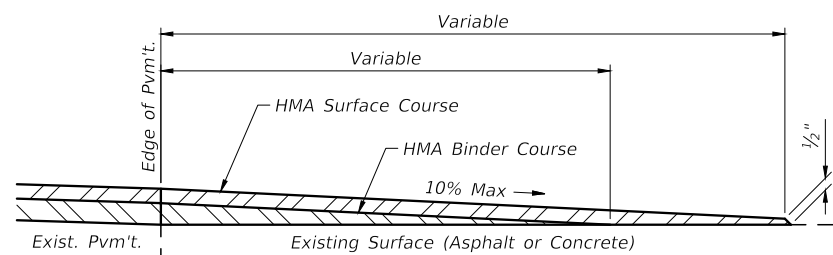
The actual number and locations of entrances and side roads shall be determined in the field by the Engineer.

SCHEDULE OF PRIVATE ENTRANCES

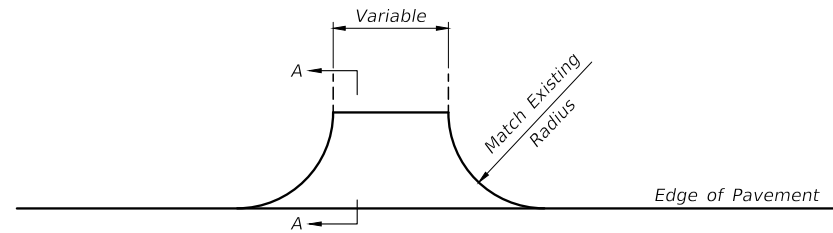
Location	Width	Agg Surface Tons	HMA Binder Tons	HMA Surface Tons
21+00 Rt	24'		2.3	1.4
21+51 Lt	10'		1.2	0.8
21+52 Lt	50'		3.8	2.6
24+00 Rt	14'	2.0	2.2	0.8
25+39 Rt	18'	1.2	1.7	0.9
27+60 Lt	15'	0.5	0.9	0.8
28+15 Rt	16'	1.0	1.6	0.8
29+00 Rt	14'	2.6	2.4	0.8
30+49 Rt	17'	3.1	2.7	0.9
32+44 Rt	13'	1.2	1.6	0.8
34+48 Rt	53'	3.3	3.5	2.0
36+07 Lt	21'		0.4	1.0
36+58 Rt	13'		6.4	1.5
38+58 Rt	18'	1.7	2.0	0.9
40+05 Rt	15'	0.4	0.7	0.8
46+40 Rt	14'	0.5	1.2	0.8
49+79 Rt	13'	0.3	0.5	0.8
52+65 Lt	12'	0.3	0.3	0.7
52+91 Rt	12'	0.4	1.0	0.7
59+10 Lt	12'	0.4	0.7	0.7
63+23 Lt	13'		0.3	0.8
65+75 Rt	18'		4.3	1.6
69+70 Lt	16'	0.4	0.7	0.8
72+62 Lt	14'	0.4	0.5	0.8
74+12 Lt	16'	0.4	0.4	0.8
75+54 Lt	12'	0.3	0.4	0.7
75+60 Rt	12'	2.9	2.6	0.7
77+02 Lt	14'	0.3	0.4	0.8
81+44 Lt	12'	0.3	0.4	0.7
82+65 Lt	20'	0.5	0.6	1.0
83+69 Lt	13'		0.5	0.8
88+35 Lt	12'		0.4	0.7
Totals		24.4	48.6	30.7



SECTION A-A PRIVATE ENTRANCE - AGGREGATE



SECTION A-A PRIVATE ENTRANCE - HMA



TYPICAL ENTRANCE DETAILS

MISCELLANEOUS DETAILS

FAS ROUTE 1926 (WING HILL ROAD)
SECTION 21-00215-00-RS
PROJECT NO. P1UL(168)
UNION COUNTY