

F.A.P. RTE.	SECTION	COUNTY	TOTAL SHEETS	SHEET NO.
337	20R-5	LAKE	562	43
STA. 99+815		TO STA. 101+180		
FED. ROAD DIST. NO.		ILLINOIS	FED. AID PROJECT	
D-91-552-99		60881		

BM 216
 STATION: 100+153.57 16.25m LT
 ELEVATION = 215.628
 SET RAILROAD SPIKE IN THE SOUTH FACE OF THE FOURTH POWER POLE EAST OF ROUTE 83 ON THE NORTH SIDE OF ROUTE 22. (POWER POLE HAS 3 TRANSISTORS)

BM 214
 STATION: 100+509.88 16.10m LT
 ELEVATION = 212.193
 FOUND RAILROAD SPIKE IN SOUTH FACE OF SECOND POWER POLE EAST OF TALL OAKS DRIVE ON THE NORTH SIDE OF ROUTE 22.

BM 212
 STATION: 100+979.14 7.06m RT
 ELEVATION = 211.656
 FOUND SQUARE ON WEST END OF SOUTHERLY CONCRETE HEADWALL OF DOUBLE BOX CULVERT OVER TRIBUTARY TO INDIAN CREEK ON THE SOUTH SIDE OF ROUTE 22.

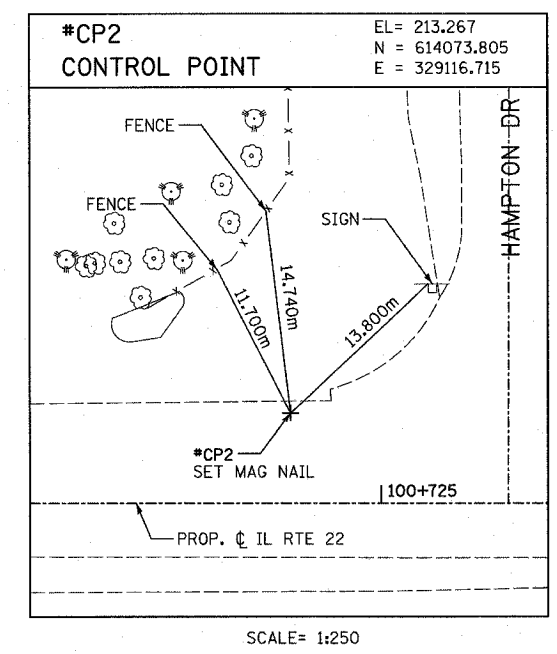
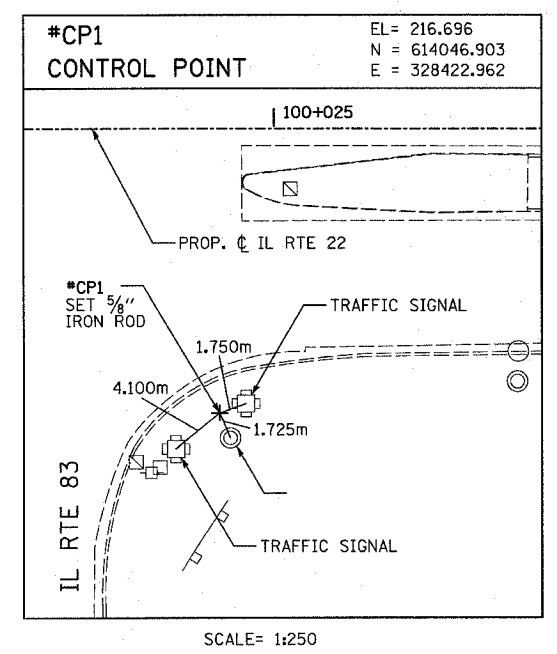
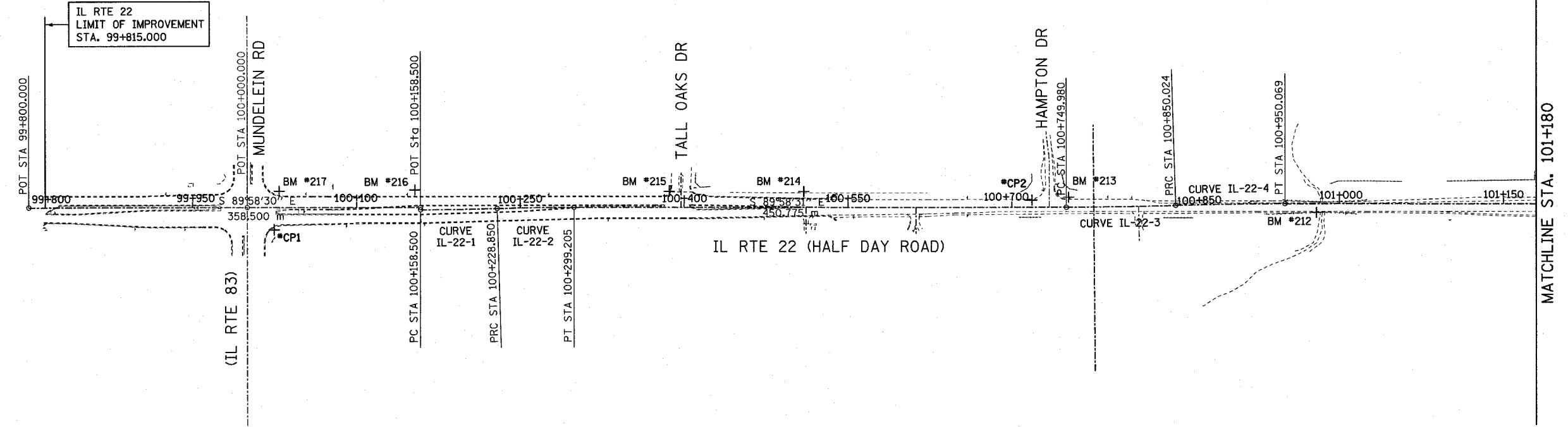
BM 217
 STATION: 100+029.61 15.19m LT
 ELEVATION = 217.056
 SET SQUARE AT THE SOUTHWEST CORNER OF CONCRETE BASE FOR TRAFFIC CONTROL BOX AT THE NORTHEAST CORNER OF ROUTE 22 AND ROUTE 83.

BM 215
 STATION: 100+386.62 16.46m LT
 ELEVATION = 213.315
 SET RAILROAD SPIKE IN THE SOUTH FACE OF POWER POLE WITH LIGHT AT THE NORTHWEST CORNER OF ROUTE 22 AND TALL OAKS DRIVE.

BM 213
 STATION: 100+752.20 10.56m LT.
 ELEVATION = 213.760
 SET RAILROAD SPIKE IN SOUTH SIDE OF POWER POLE WITH LIGHT AT NORTHEAST CORNER OF ROUTE 22 AND HAMPTON ROAD.

FINAL SURVEY	DATE
SURVEYED	
PLOTTED	
NOTE BOOK	
TEMPLATE	
AREAS	
CHECKED	
NO.	

ORIGINAL SURVEY	DATE
SURVEYED	
PLOTTED	
NOTE BOOK	
TEMPLATE	
AREAS	
CHECKED	
NO.	

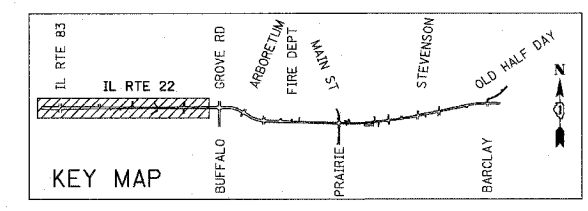


Prop. Curve IL-22-1
 PI Sta. 100+193.677
 $\Delta = 1^\circ 36' 44''$ (LT)
 T = 35.177 m
 R = 2,500.000 m
 L = 70.350 m
 E = 0.247 m
 PC Sta. 100+158.500
 PT Sta. 100+228.850

Prop. Curve IL-22-3
 PI Sta. 100+800.006
 $\Delta = 1^\circ 44' 49''$ (LT)
 T = 50.026 m
 R = 3,280.976 m
 L = 100.044 m
 E = 0.381 m
 PC Sta. 100+749.980
 PT Sta. 100+850.024

Prop. Curve IL-22-2
 PI Sta. 100+264.030
 $\Delta = 1^\circ 36' 45''$ (RT)
 T = 35.180 m
 R = 2,500.000 m
 L = 70.355 m
 E = 0.247 m
 PC Sta. 100+228.850
 PT Sta. 100+299.205

Prop. Curve IL-22-4
 PI Sta. 100+900.050
 $\Delta = 1^\circ 44' 50''$ (RT)
 T = 50.026 m
 R = 3,280.976 m
 L = 100.045 m
 E = 0.381 m
 PC Sta. 100+850.024
 PT Sta. 100+950.069



REVISIONS	
NAME	DATE

ILLINOIS DEPARTMENT OF TRANSPORTATION
 IL RTE 22 (FAP 337)
 IL RTE 83 TO US 45 / IL 21 (MILWAUKEE AVE)
 ALIGNMENT,
 TIES AND BENCHMARKS
 SHEET 1 OF 4
 SCALE: 1:2000
 DATE: 03-22-2004
 DRAWN BY: BK
 CHECKED BY: JNR