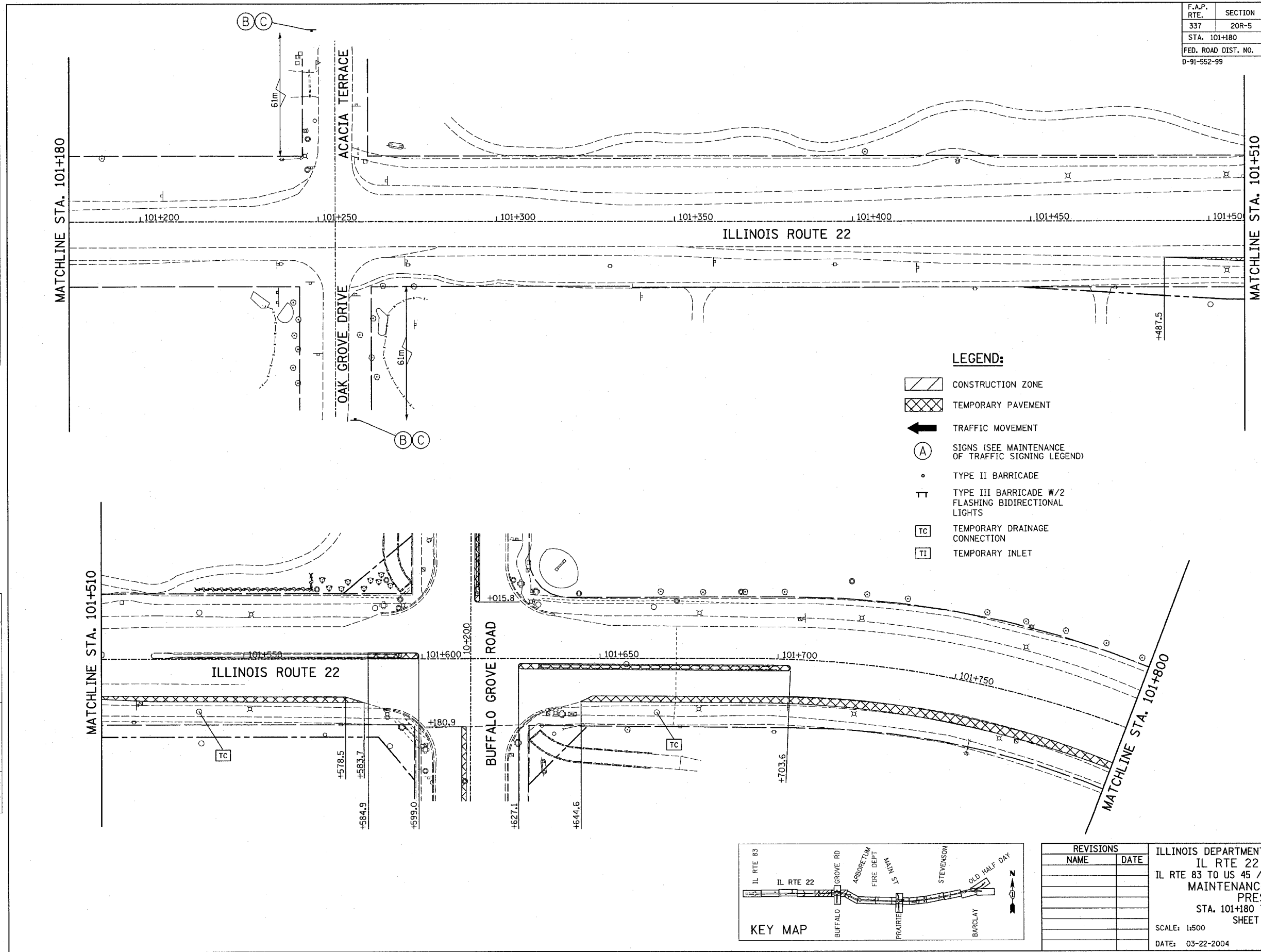


F.A.P. RTE.	SECTION	COUNTY	TOTAL SHEETS	SHEET NO.
337	20R-5	LAKE	562	81
STA. 101+180		TO STA. 101+800		
FED. ROAD DIST. NO.		ILLINOIS	FED. AID PROJECT	
D-91-562-99		60881		

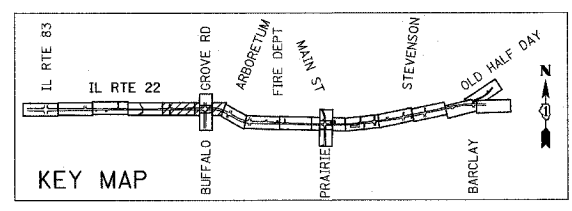
FINAL SURVEY	BY	DATE
SURVEYED		
PLOTTED		
NOTE BOOK		
TEMPLATE		
AREAS		
CHECKED		
NO.		

ORIGINAL SURVEY	BY	DATE
SURVEYED		
PLOTTED		
NOTE BOOK		
TEMPLATE		
AREAS		
CHECKED		
NO.		



**LEGEND:**

- CONSTRUCTION ZONE
- TEMPORARY PAVEMENT
- TRAFFIC MOVEMENT
- SIGNS (SEE MAINTENANCE OF TRAFFIC SIGNING LEGEND)
- TYPE II BARRICADE
- TYPE III BARRICADE W/2 FLASHING BIDIRECTIONAL LIGHTS
- TEMPORARY DRAINAGE CONNECTION
- TEMPORARY INLET



REVISIONS	
NAME	DATE

ILLINOIS DEPARTMENT OF TRANSPORTATION  
 IL RTE 22 (FAP 337)  
 IL RTE 83 TO US 45 / IL 21 (MILWAUKEE AVE)  
 MAINTENANCE OF TRAFFIC  
 PRESTAGE  
 STA. 101+180 TO STA. 101+800  
 SHEET 3 OF 9  
 SCALE: 1:500  
 DATE: 03-22-2004  
 DRAWN BY: JPM  
 CHECKED BY: JNR