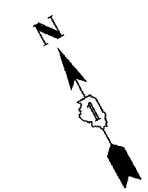
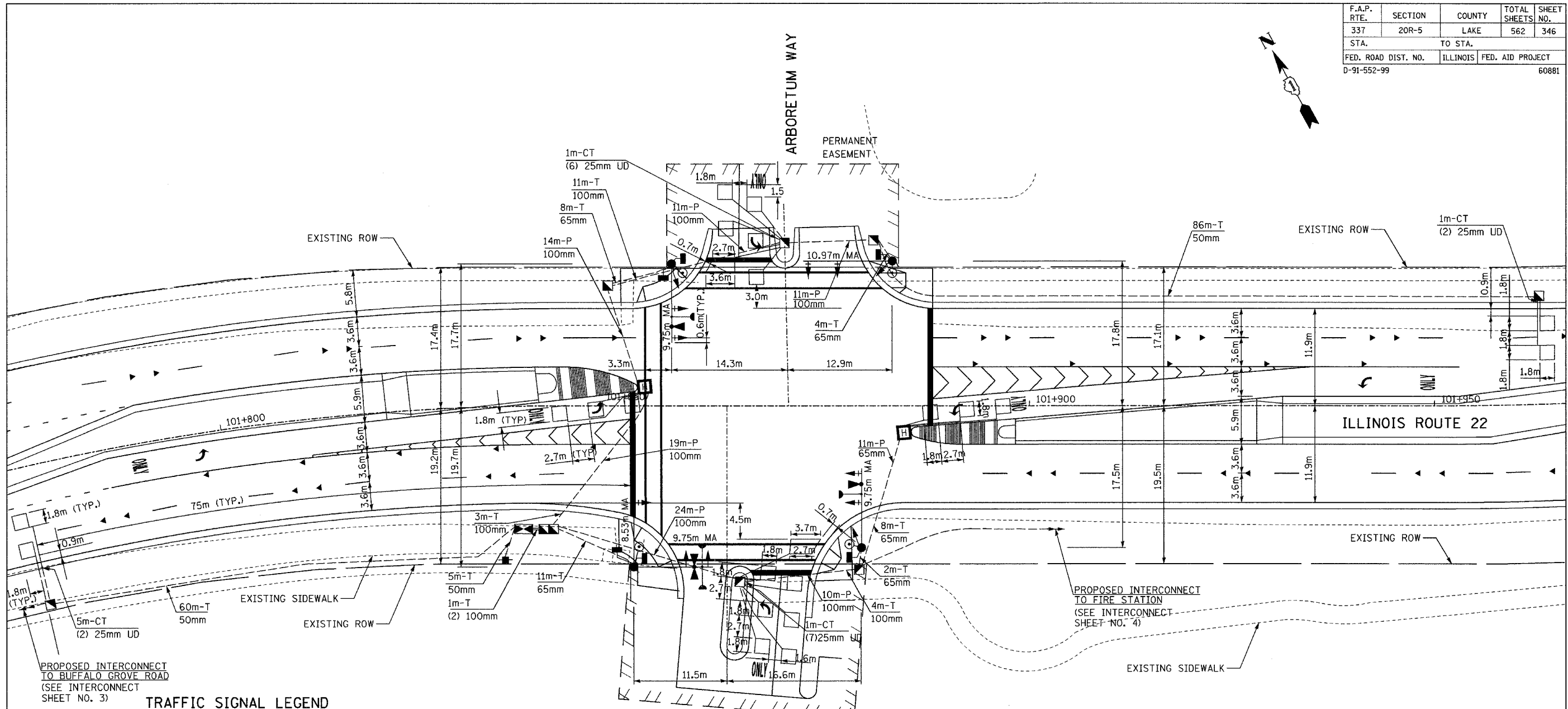


F.A.P. RTE.	SECTION	COUNTY	TOTAL SHEETS	SHEET NO.
337	20R-5	LAKE	562	346
STA.		TO STA.		
FED. ROAD DIST. NO.		ILLINOIS	FED. AID PROJECT	
D-91-552-99		60881		



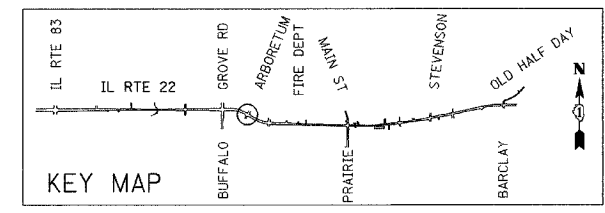
BY	DATE
FINAL SURVEY PLOTTED	
NOTE BOOK TEMPLATE	
AREAS CHECKED	
NO.	

BY	DATE
ORIGINAL SURVEY PLOTTED	
NOTE BOOK TEMPLATE	
AREAS CHECKED	
NO.	



		CONTROLLER			DETECTOR LOOP
		SERVICE INSTALLATION			CAST IRON JUNCTION BOX
		SIGNAL HEAD			EMERGENCY VEHICLE SYSTEM DETECTOR
		SIGNAL HEAD WITH BACKPLATE			CONFIRMATION BEACON
		SIGNAL HEAD, PEDESTRIAN			SIGNAL HEAD OPTICALLY PROGRAMMED
		SIGNAL POST			CONDUIT SPLICE
		MAST ARM ASSEMBLY AND POLE, STEEL			WOOD POLE
		MAST ARM ASSEMBLY AND POLE, ALUMINUM			RACEWAY FOR MAGNETIC DETECTOR, TYPE I OR TYPE II
		COMMON TRENCH			VEHICLE DETECTOR, NON COMPENSATED, MAGNETIC TYPE
		UNIT DUCT			RAILROAD CONTROL CABINET
		HANDHOLE			ILLUMINATED SIGN, FIBER OPTIC "NO LEFT TURN"
		HEAVY DUTY HANDHOLE			ILLUMINATED SIGN, FIBER OPTIC "NO RIGHT TURN"
		DOUBLE HANDHOLE			TELEPHONE
		G.S. CONDUIT IN TRENCH OR PUSHED			
		PEDESTRIAN PUSH-BUTTON DETECTOR			

THE TRAFFIC SIGNAL EQUIPMENT FOR THIS PROJECT SHALL BE "ECONOLITE" TO MATCH THE EXISTING ADJACENT SYSTEM.



REVISIONS	
NAME	DATE

ILLINOIS DEPARTMENT OF TRANSPORTATION  
 IL RTE 22 (FAP 337)  
 IL RTE 83 TO US 45 / IL 21 (MILWAUKEE AVE)  
**TRAFFIC SIGNAL INSTALLATION PLAN**  
 ILLINOIS ROUTE 22 AT ARBORETUM WAY  
 SCALE: 1:250  
 DATE: 03-22-2004  
 DRAWN BY: AMB  
 DESIGNED BY: AMB  
 CHECKED BY: JPS