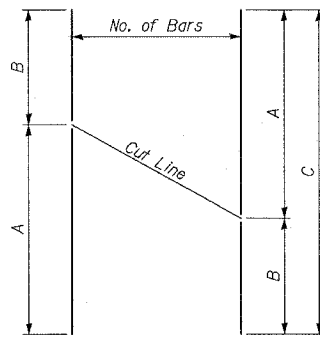


STATE OF ILLINOIS  
DEPARTMENT OF TRANSPORTATION

FAP	SECTION	COUNTY	SHEET	SHEET
337	20R-5	LAKE	562	419
FED. ROAD DIST. NO. 7		ILLINOIS	FED. AID PROJECT	
D-91-552-99		Contract No. 60881		

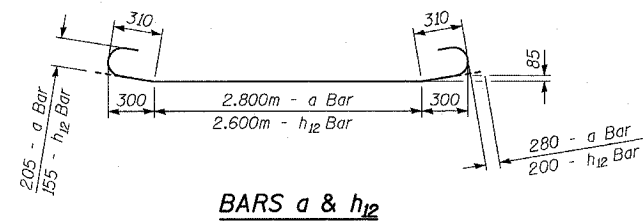
SHEET NO. 6  
13 SHEETS



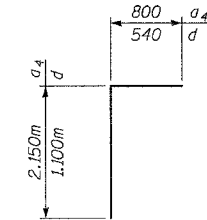
**SERIES OF BAR CUTTING DIAGRAM**  
See table for dimensions. Make all cuts normal to bar axis

**BAR TABLE SCHEDULE**

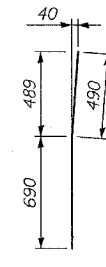
Bar	No. of Sets Req'd	No. of Bars Per Set	A	B	C
v <sub>3</sub>	1	19	4.160m	2.600m	6.760m
v <sub>4</sub>	1	5	4.160m	2.600m	6.760m



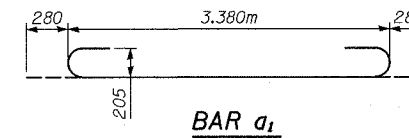
**BARS a & h<sub>12</sub>**



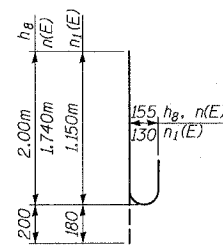
**BARS a<sub>4</sub> & d**



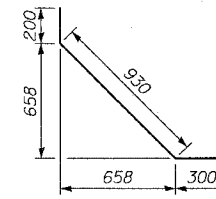
**BAR d<sub>2</sub>**



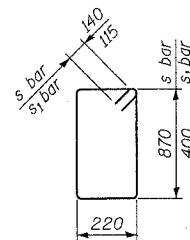
**BAR a<sub>1</sub>**



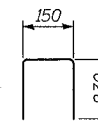
**BARS h<sub>8</sub>, n(E) & n<sub>1</sub>(E)**



**BAR v<sub>5</sub>**



**BAR s & s<sub>1</sub>**



**BAR d<sub>3</sub>**

**BILL OF MATERIAL**

Bar	No.	Size	Length (m)	Shape
a	160	#25	3.98	U
a <sub>1</sub>	157	#25	3.94	U
a <sub>2</sub>	52	#13	3.08	—
a <sub>3</sub>	70	#16	3.38	—
a <sub>4</sub>	6	#19	2.95	—
d	64	#13	1.64	—
d <sub>1</sub>	16	#19	1.35	—
d <sub>2</sub>	12	#16	1.18	—
d <sub>3</sub>	4	#16	0.61	—
e	6	#16	3.38	—
h	10	#13	12.70	—
h <sub>1</sub>	12	#25	12.70	—
h <sub>2</sub>	20	#16	12.70	—
h <sub>3</sub>	22	#19	12.70	—
h <sub>4</sub>	10	#13	15.45	—
h <sub>5</sub>	12	#25	15.45	—
h <sub>6</sub>	20	#16	15.45	—
h <sub>7</sub>	22	#19	15.45	—
h <sub>8</sub>	16	#19	2.20	U
h <sub>9</sub>	6	#19	3.27	—
h <sub>10</sub>	28	#13	4.39	—
h <sub>11</sub>	20	#13	4.66	—
h <sub>12</sub>	2	#19	3.62	U
s	24	#16	2.46	—
s <sub>1</sub>	12	#13	1.47	—
n(E)	38	#19	1.94	U
n <sub>1</sub> (E)	36	#16	1.33	U
t	66	#16	2.33	—
v	380	#13	3.05	—
v <sub>1</sub>	380	#13	0.72	—
v <sub>2</sub>	6	#13	3.28	—
v <sub>3</sub>	19	#16	6.76	—
v <sub>4</sub>	5	#13	6.76	—
v <sub>5</sub>	16	#19	1.42	—
v <sub>6</sub>	6	#13	1.65	—
w	24	#16	4.39	—
Concrete Box Culverts	CU M		117	
Reinforcement Bars	KG		12,250	
Reinforcement Bars, Epoxy Coated	KG		240	
Bar Splicers	EACH		64	

Reinforcement designated (E) shall be epoxy coated for n & n<sub>1</sub> dowels only.

**TYLIN INTERNATIONAL**

DESIGNED	TD, MAF
CHECKED	MI
DRAWN	MAF
CHECKED	MI
DATE	03-22-2004

SSB-TI-0 (M) 6-1-2000

**TUNNEL DETAILS**

IL ROUTE 22 OVER  
PEDESTRIAN TUNNEL  
FAP 337 SECTION 20R-5  
LAKE COUNTY  
STA. 100+775.000  
S.N. 049-T016