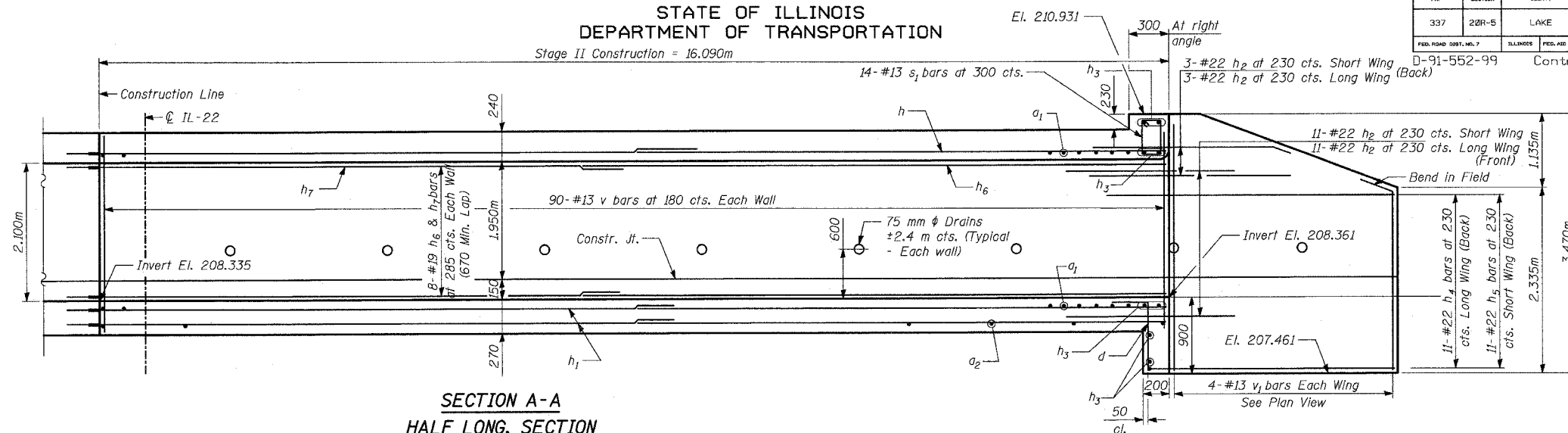


STATE OF ILLINOIS
DEPARTMENT OF TRANSPORTATION

Stage II Construction = 16.090m

FAP	SECTION	COUNTY	STATION	SHEET
337	20R-5	LAKE	562	430
FED. ROAD DIST. NO. 7		ILLINOIS	FED. AID PROJECT	
D-91-552-99		Contract No. 60881		

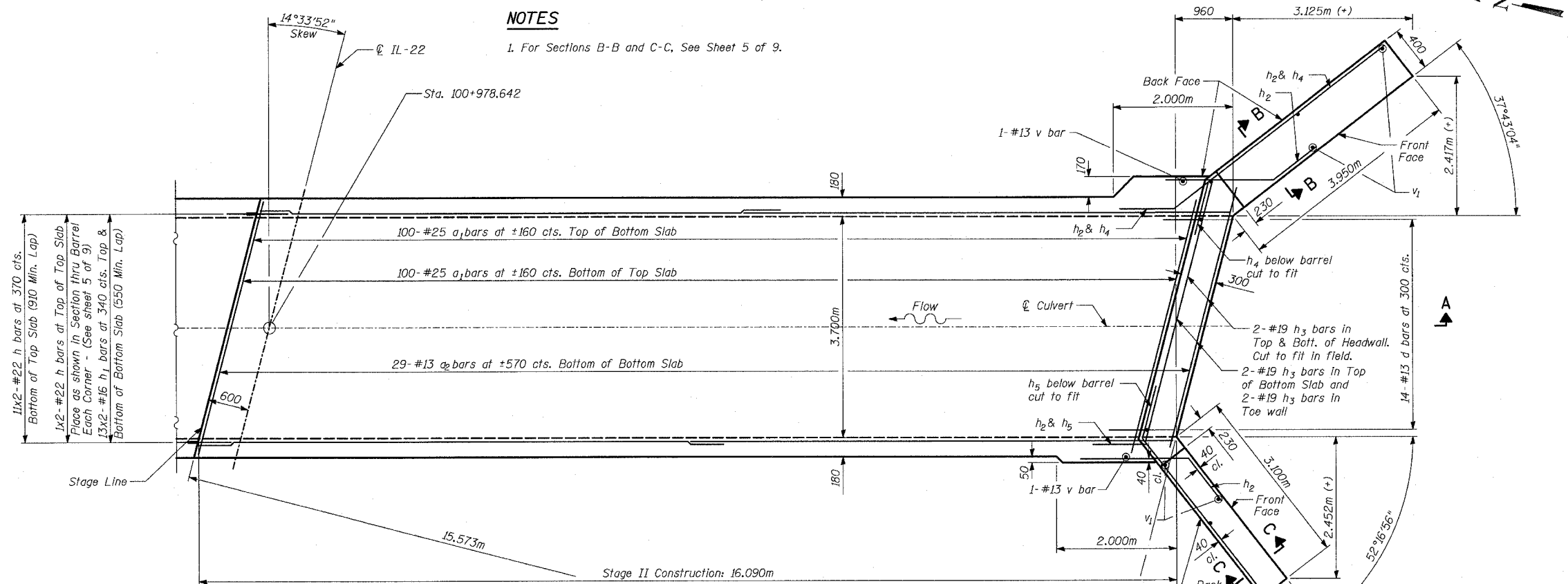
SHEET NO. 4
9 SHEETS



SECTION A-A
HALF LONG. SECTION

NOTES

1. For Sections B-B and C-C, See Sheet 5 of 9.



HALF PLAN

TYLIN INTERNATIONAL

DESIGNED	MI, MAF
CHECKED	TD
DRAWN	MAF
CHECKED	TD, MI
DATE	03-22-2004

CULVERT PLAN AND
ELEVATION - SOUTH

IL ROUTE 22 OVER
KILDEER CREEK
FAP 337 SECTION 20R-5
LAKE COUNTY
STA. 100+978.642
S.N. 049-C003