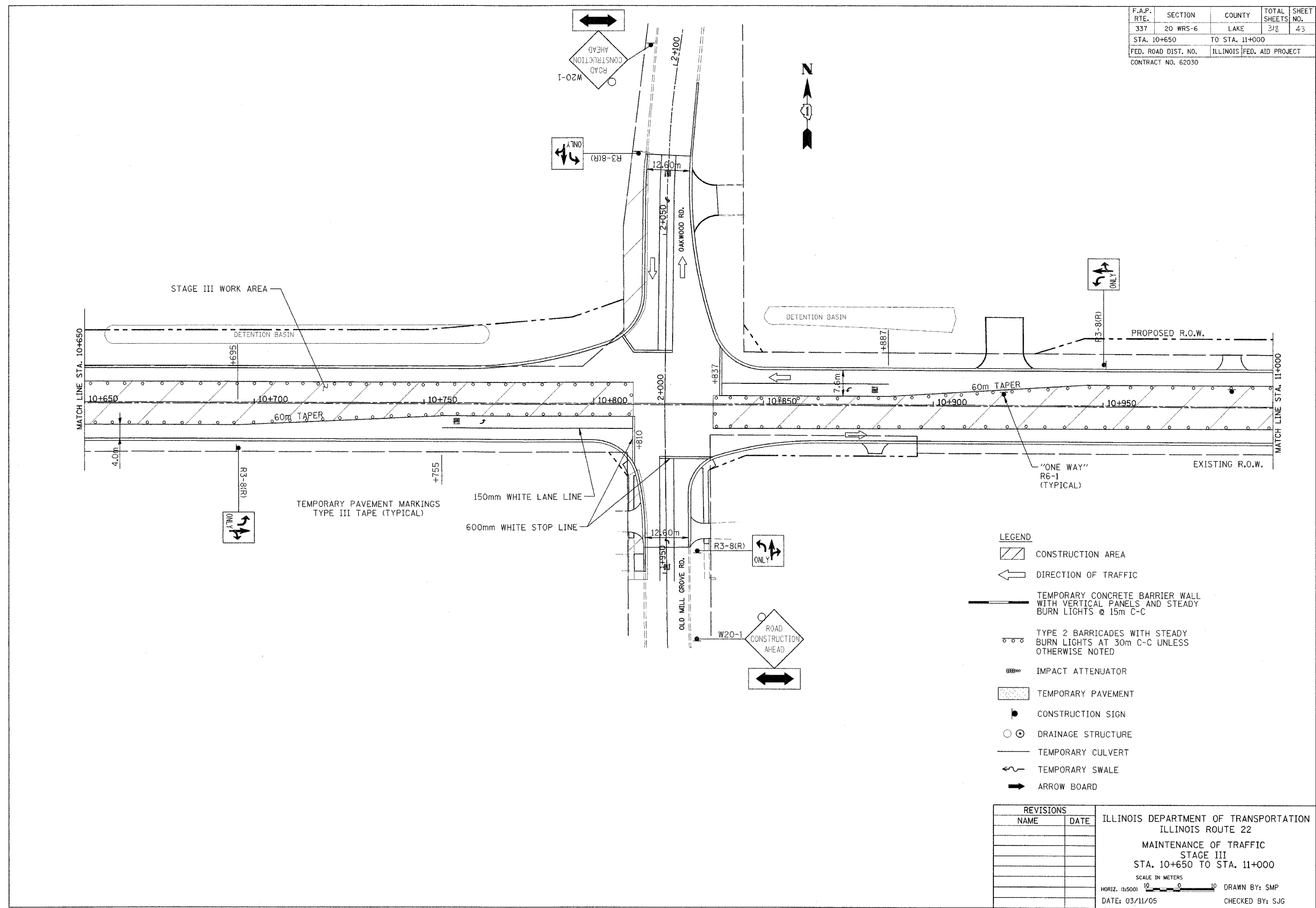


F.A.P. RTE.	SECTION	COUNTY	TOTAL SHEETS	SHEET NO.
337	20 WRS-6	LAKE	318	43
STA. 10+650		TO STA. 11+000		
FED. ROAD DIST. NO.		ILLINOIS FED. AID PROJECT		
CONTRACT NO. 62030				



- LEGEND**
- CONSTRUCTION AREA
 - DIRECTION OF TRAFFIC
 - TEMPORARY CONCRETE BARRIER WALL WITH VERTICAL PANELS AND STEADY BURN LIGHTS @ 15m C-C
 - TYPE 2 BARRICADES WITH STEADY BURN LIGHTS AT 30m C-C UNLESS OTHERWISE NOTED
 - IMPACT ATTENUATOR
 - TEMPORARY PAVEMENT
 - CONSTRUCTION SIGN
 - DRAINAGE STRUCTURE
 - TEMPORARY CULVERT
 - TEMPORARY SWALE
 - ARROW BOARD

REVISIONS	
NAME	DATE

ILLINOIS DEPARTMENT OF TRANSPORTATION
 ILLINOIS ROUTE 22
 MAINTENANCE OF TRAFFIC
 STAGE III
 STA. 10+650 TO STA. 11+000
 SCALE IN METERS
 HORIZ. 1:15000
 DATE: 03/11/05
 DRAWN BY: SMP
 CHECKED BY: SJG