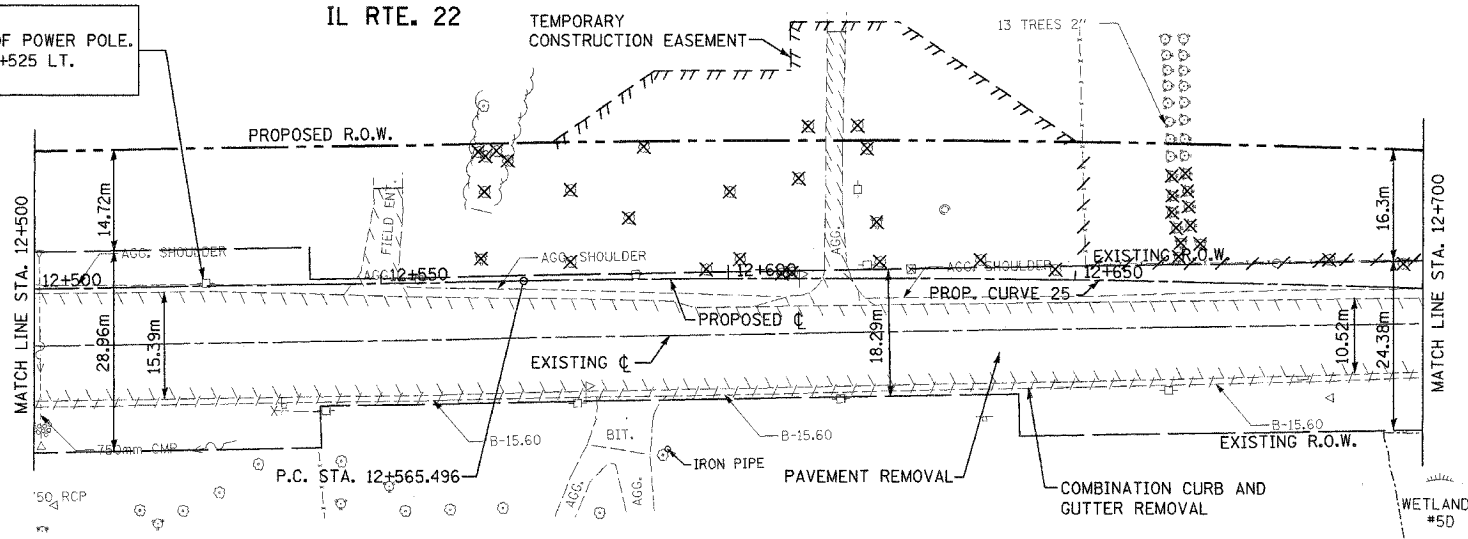
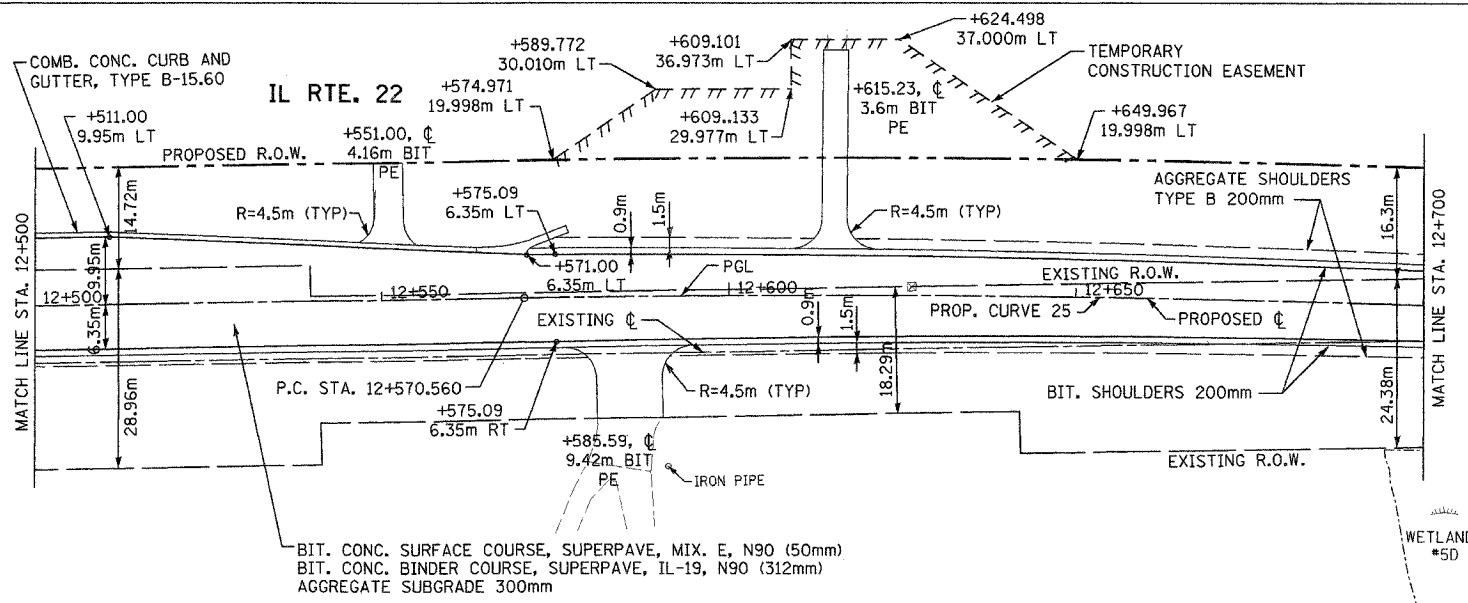


F.A.P. RTE.	SECTION	COUNTY	TOTAL SHEETS	SHEET NO.
337	20 WRS-6	LAKE	318	57
STA. 12+500		TO STA. 12+700		
FED. ROAD DIST. NO.		ILLINOIS FED. AID PROJECT		
CONTRACT NO. 62030				

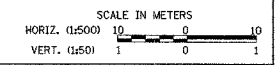
BM #8
R.R. SPIKE IN S. FACE OF POWER POLE.
POWER POLE AT STA. 12+525 LT.
ELEV=242.749



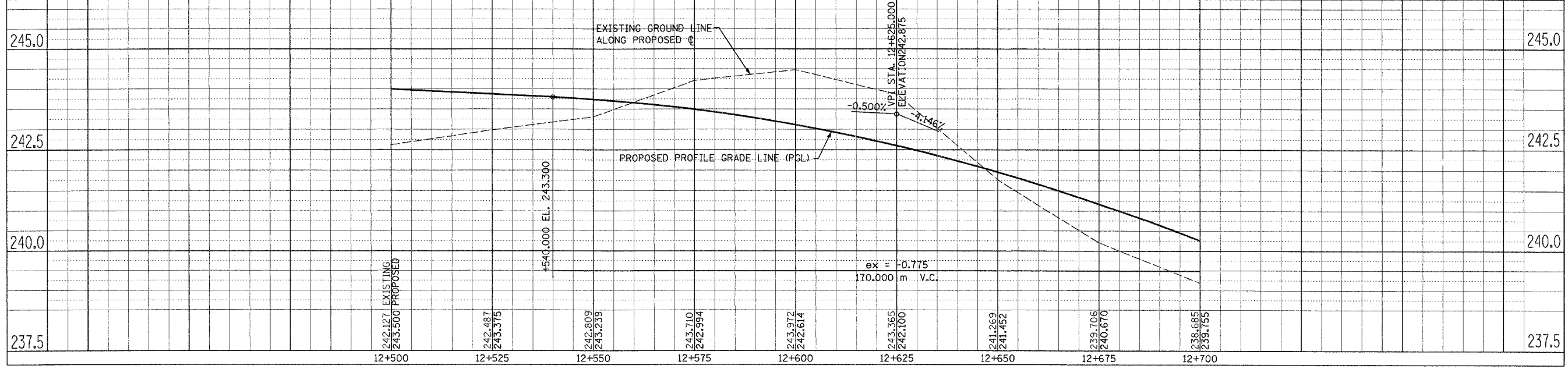
EXISTING



PROP. CURVE 25
PI STA = 12+644.660
 $\Delta = 3^\circ 11' 00''$ (RT)
R = 2,666.682 m
T = 74.101 m
L = 148.164 m
E = 1.029 m
SE = NORMAL CROWN
P.C. STA = 12+570.560
P.T. STA = 12+718.723



PROPOSED



PLAN AND PROFILE IL RTE. 22 STA. 12+500 TO STA. 12+700

FINAL SURVEY	DATE
SURVEY PLOTTED	
NOTE BOOK TEMPLATE	
AREAS CHECKED	
NO.	

ORIGINAL SURVEY	DATE
SURVEY PLOTTED	
NOTE BOOK TEMPLATE	
AREAS CHECKED	
NO.	