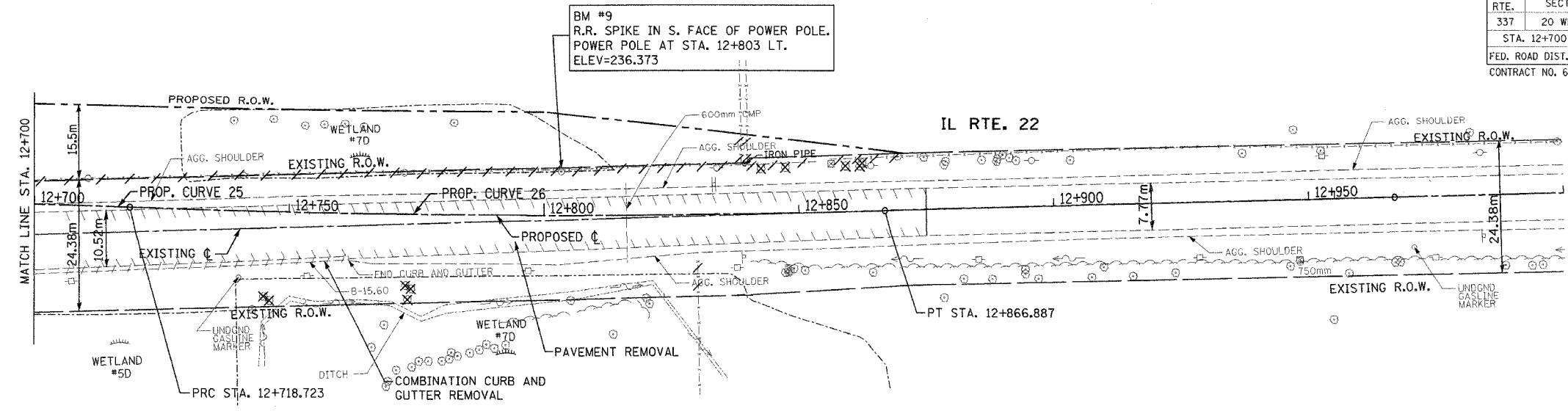


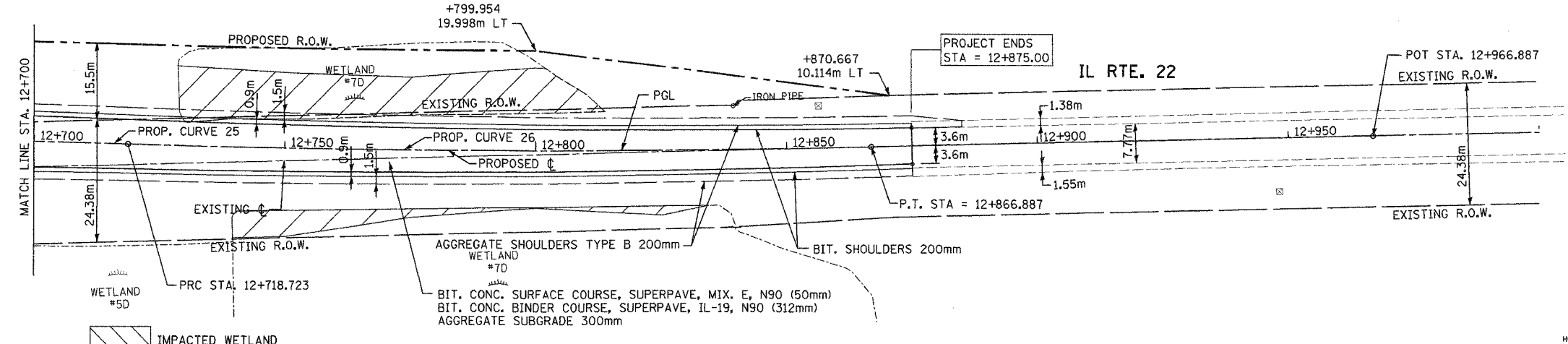
F.A.P. RTE.	SECTION	COUNTY	TOTAL SHEETS	SHEET NO.
337	20 WRS-6	LAKE	3/8	58
STA. 12+700		TO STA. 12+950		
FED. ROAD DIST. NO.		ILLINOIS FED. AID PROJECT		
CONTRACT NO. 62030				



EXISTING

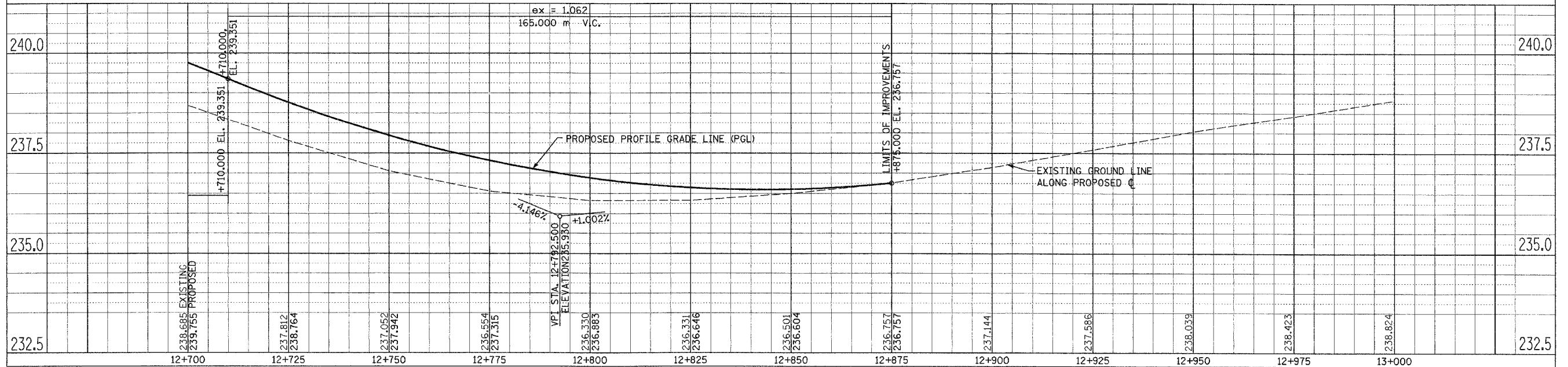
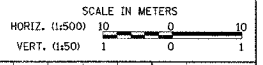
**PROP. CURVE 25**  
PI STA = 12+644.660  
 $\Delta = 3^\circ 11' 00''$  (RT)  
R = 2,666.682 m  
T = 74.101 m  
L = 148.164 m  
E = 1.029 m  
SE = NORMAL CROWN  
P.C. STA = 12+570.560  
P.R.C. STA = 12+718.723

**PROP. CURVE 26**  
PI STA = 12+792.824  
 $\Delta = 3^\circ 11' 00''$  (LT)  
R = 2,666.682 m  
T = 74.101 m  
L = 148.164 m  
E = 1.029 m  
SE = NORMAL CROWN  
P.R.C. STA = 12+718.723  
P.T. STA = 12+866.887



PROPOSED

IMPACTED WETLAND



PLAN AND PROFILE IL RTE. 22 STA. 12+700 TO STA. 13+000

FINAL SURVEY PLOTTED	BY	DATE
NOTE BOOK TEMPLATE		
AREAS CHECKED		
NO.		

ORIGINAL SURVEY PLOTTED	BY	DATE
NOTE BOOK TEMPLATE		
AREAS CHECKED		
NO.		