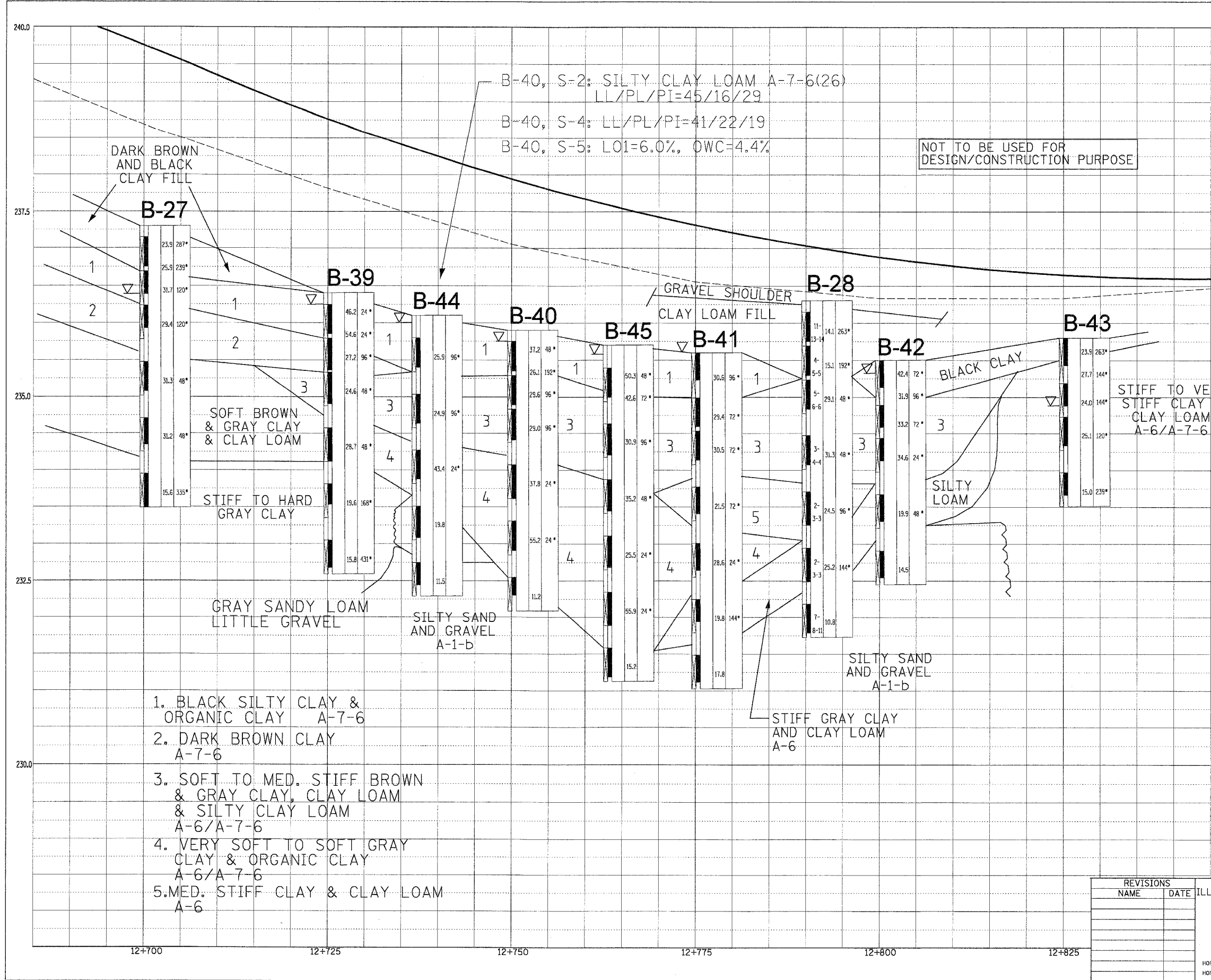


F.A.P. RTE.	SECTION	COUNTY	TOTAL SHEETS	SHEET NO.
337	20 WRS-6	LAKE	314	72
STA. 12+700		TO STA. 12+850		
FED. ROAD DIST. NO.	ILLINOIS FED. AID PROJECT			
CONTRACT NO. 62030				



B-40, S-2: SILTY CLAY LOAM A-7-6(26)
 LL/PL/PI=45/16/29
 B-40, S-4: LL/PL/PI=41/22/19
 B-40, S-5: L₀₁=6.0%, OWC=4.4%

NOT TO BE USED FOR
 DESIGN/CONSTRUCTION PURPOSE

1. BLACK SILTY CLAY & ORGANIC CLAY A-7-6
2. DARK BROWN CLAY A-7-6
3. SOFT TO MED. STIFF BROWN & GRAY CLAY, CLAY LOAM & SILTY CLAY LOAM A-6/A-7-6
4. VERY SOFT TO SOFT GRAY CLAY & ORGANIC CLAY A-6/A-7-6
5. MED. STIFF CLAY & CLAY LOAM A-6

BY	DATE
FINAL SURVEY PLOTTED	
NOTE BOOK TEMPLATE AREAS CHECKED	
NO.	

BY	DATE
ORIGINAL SURVEY PLOTTED	
NOTE BOOK TEMPLATE AREAS CHECKED	
NO.	

REVISIONS	
NAME	DATE

ILLINOIS DEPARTMENT OF TRANSPORTATION
 ILLINOIS ROUTE 22
 GEOTECHNICAL PLAN AND PROFILE
 STA. 12+700 TO STA. 12+850

SCALE IN METERS
 HORIZ. (1:500) 10 0 10
 HORIZ. (1:500) 1 0 1

DATE: 8/5/02
 DRAWN BY: SMP
 CHECKED BY: BDH