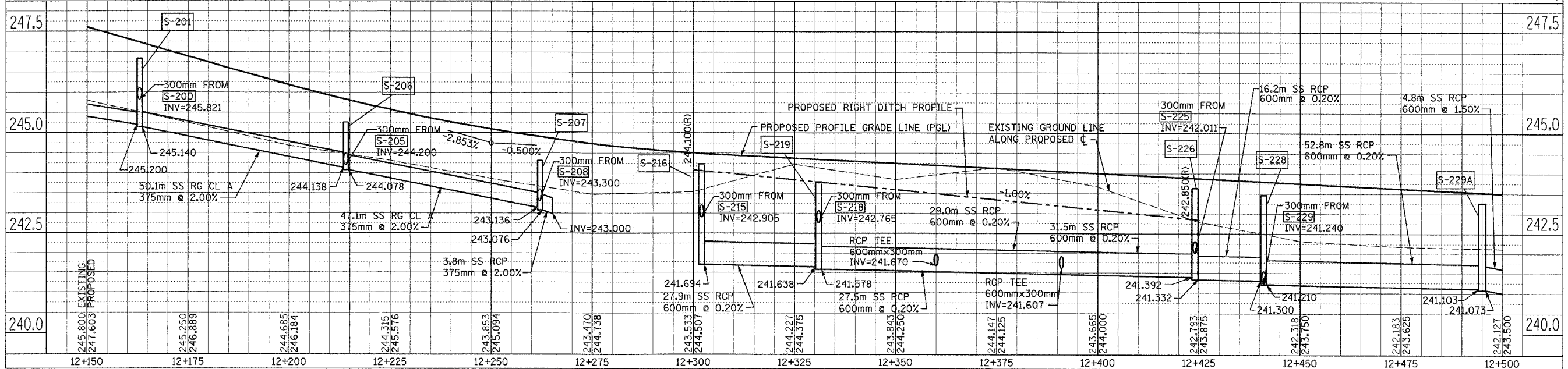
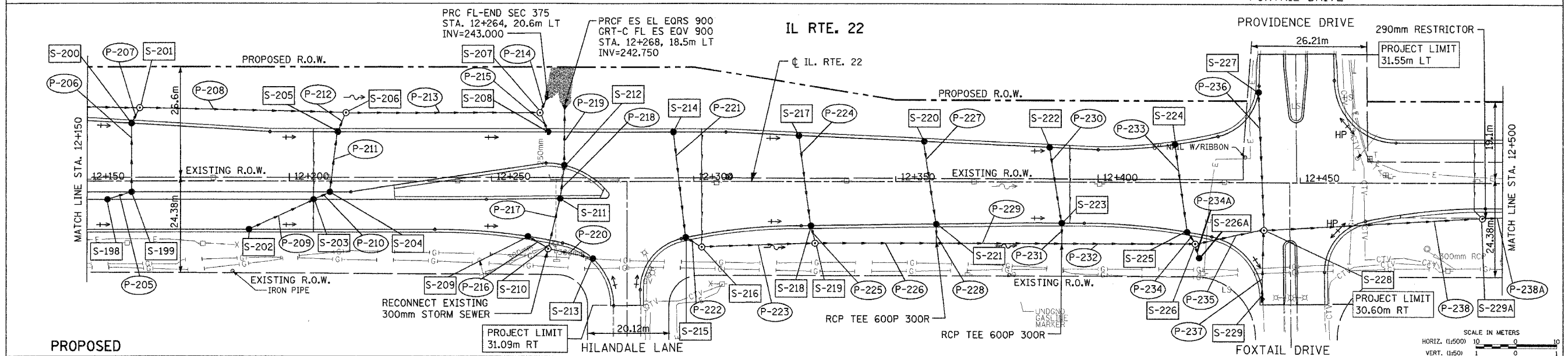
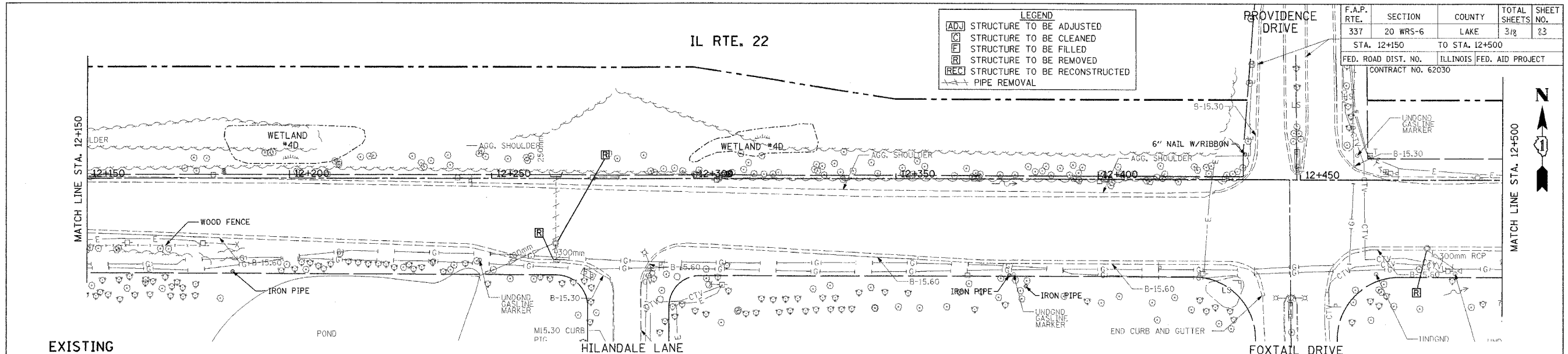


F.A.P. RTE.	SECTION	COUNTY	TOTAL SHEETS	SHEET NO.
337	20 WRS-6	LAKE	3/8	23
STA. 12+150 TO STA. 12+500				
FED. ROAD DIST. NO.		ILLINOIS FED. AID PROJECT		
		CONTRACT NO. 62030		

LEGEND

- [ADJ] STRUCTURE TO BE ADJUSTED
- [C] STRUCTURE TO BE CLEANED
- [F] STRUCTURE TO BE FILLED
- [R] STRUCTURE TO BE REMOVED
- [REC] STRUCTURE TO BE RECONSTRUCTED
- PIPE REMOVAL



DRAINAGE AND UTILITIES IL. RTE. 22 STA. 12+150 TO STA. 12+500

BY	DATE
FINAL SURVEY PLOTTED	
NOTE BOOK TEMPLATE AREAS CHECKED	
NO.	

BY	DATE
ORIGINAL SURVEY PLOTTED	
NOTE BOOK TEMPLATE AREAS CHECKED	
NO.	