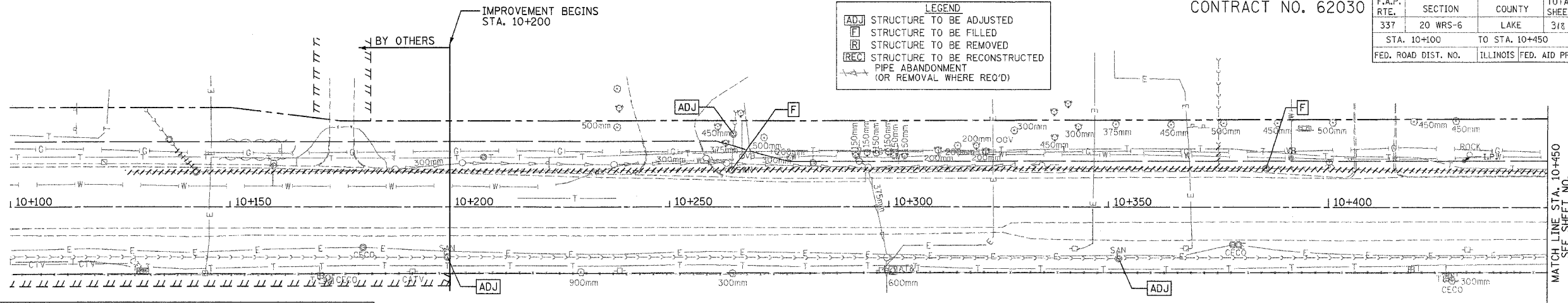


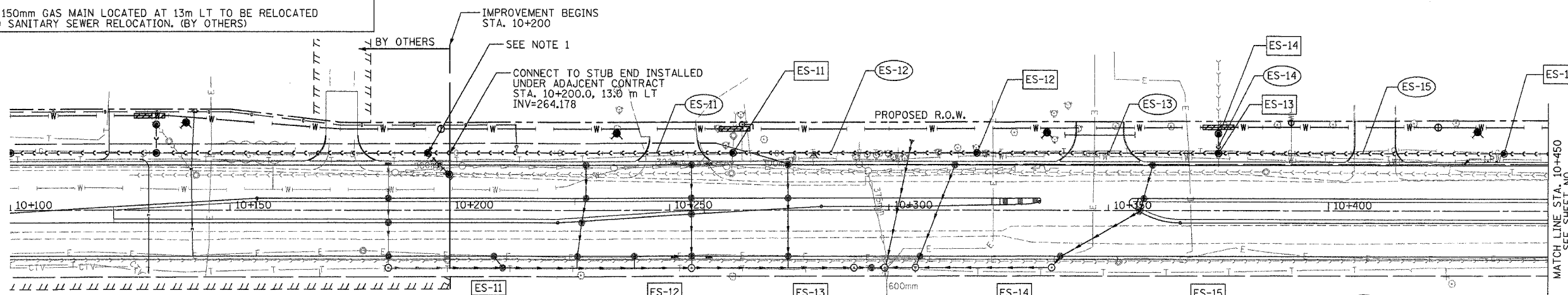
F.A.P. RTE.	SECTION	COUNTY	TOTAL SHEETS	SHEET NO.
337	20 WRS-6	LAKE	318	18
STA. 10+100 TO STA. 10+450		ILLINOIS FED. AID PROJECT		

LEGEND

- [ADJ] STRUCTURE TO BE ADJUSTED
- [F] STRUCTURE TO BE FILLED
- [R] STRUCTURE TO BE REMOVED
- [REC] STRUCTURE TO BE RECONSTRUCTED
- PIPE ABANDONMENT (OR REMOVAL WHERE REQ'D)



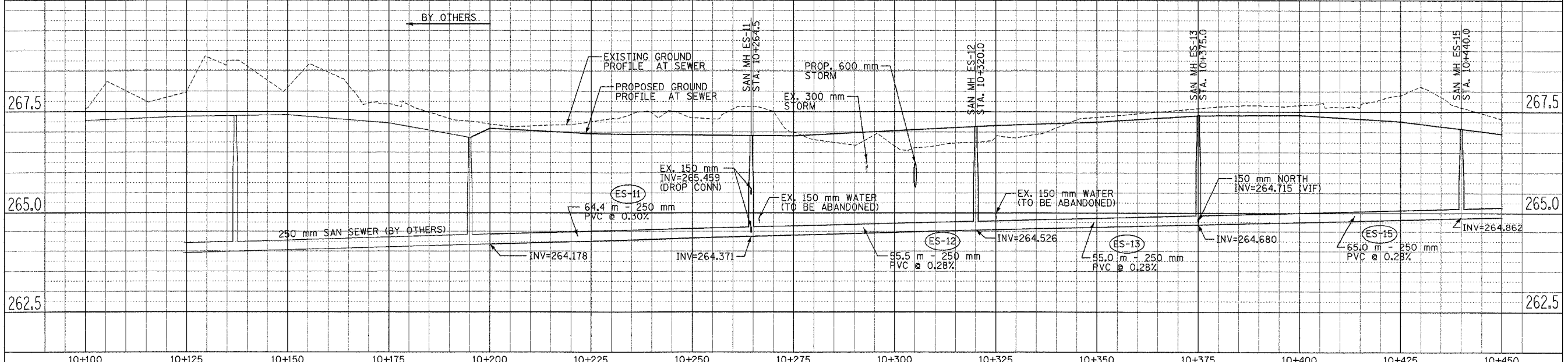
- NOTES:**
- FOLLOWING INSTALLATION OF NEW SANITARY SEWER FROM STA. 10+200 TO STA. 10+496 AND CONNECTION OF ALL SERVICES, CONTRACTOR SHALL PLUG THE SOUTHEAST INVERT OF MANHOLE AT STA. 10+195, 13m LT, FILL TEMPORARY MANHOLE AT STA. 10+200, 8.1m LT, AND ABANDON TEMPORARY PIPING BETWEEN THESE MANHOLES.
 - EXISTING 150mm GAS MAIN LOCATED AT 13m LT TO BE RELOCATED PRIOR TO SANITARY SEWER RELOCATION. (BY OTHERS)



GRAEF, ANHALT, SCHLOEMER & ASSOCIATES, INC.
 ENGINEERS & SCIENTISTS
 8501 W. Higgins Road, Suite 280
 Chicago, Illinois 60631
 (773) 399-0112

STRUCTURE
 PIPE

- ES-11** DROP SAN. MH 1.2M DIA. W/ FR, LID & CHIMNEY SEAL STA. 10+264.5, 13.0 m LT RIM=266.92 INV(E,W)=264.371 INV(N)=265.459 (EX-DROP CONN) (VERIFY IN FIELD)
- ES-12** SAN. MH 1.2M DIA. W/ FR, LID & CHIMNEY SEAL STA. 10+320.0, 13.0 m LT RIM=267.13 INV(E,W)=264.526
- ES-13** SAN. MH 1.2M DIA. W/ FR, LID & CHIMNEY SEAL STA. 10+375.0, 13.0 m LT RIM=267.40 INV(N,S)=264.715 INV(E,W)=264.680
- ES-14** SAN. MH 1.2M DIA. W/ FR, LID & CHIMNEY SEAL STA. 10+440.0, 13.0 m LT RIM=267.08 INV(N,S)=264.760 (EX) (VERIFY LOCATION & INVERTS IN FIELD) INV(E,W)=264.862
- ES-15** SAN. MH 1.2M DIA. W/ FR, LID & CHIMNEY SEAL STA. 10+440.0, 13.0 m LT RIM=267.08 INV(N,S)=264.760 (EX) (VERIFY LOCATION & INVERTS IN FIELD) INV(E,W)=264.862
- ES-14** 4.5 m - 150 mm PVC @ 1.00%



SANITARY SEWER RELOCATION IL. RTE. 22 STA. 10+200 TO STA. 10+450