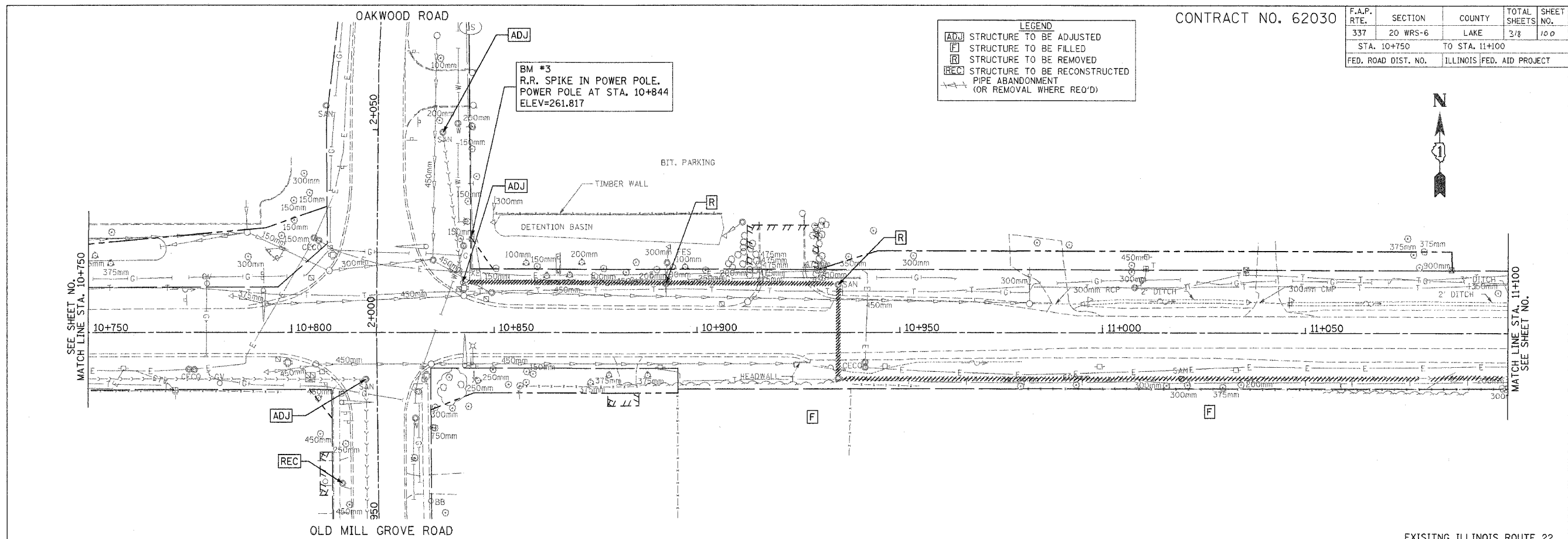


CONTRACT NO. 62030

F.A.P. RTE.	SECTION	COUNTY	TOTAL SHEETS	SHEET NO.
337	20 WRS-6	LAKE	3/8	100
STA. 10+750		TO STA. 11+100		
FED. ROAD DIST. NO.		ILLINOIS FED. AID PROJECT		

**LEGEND**

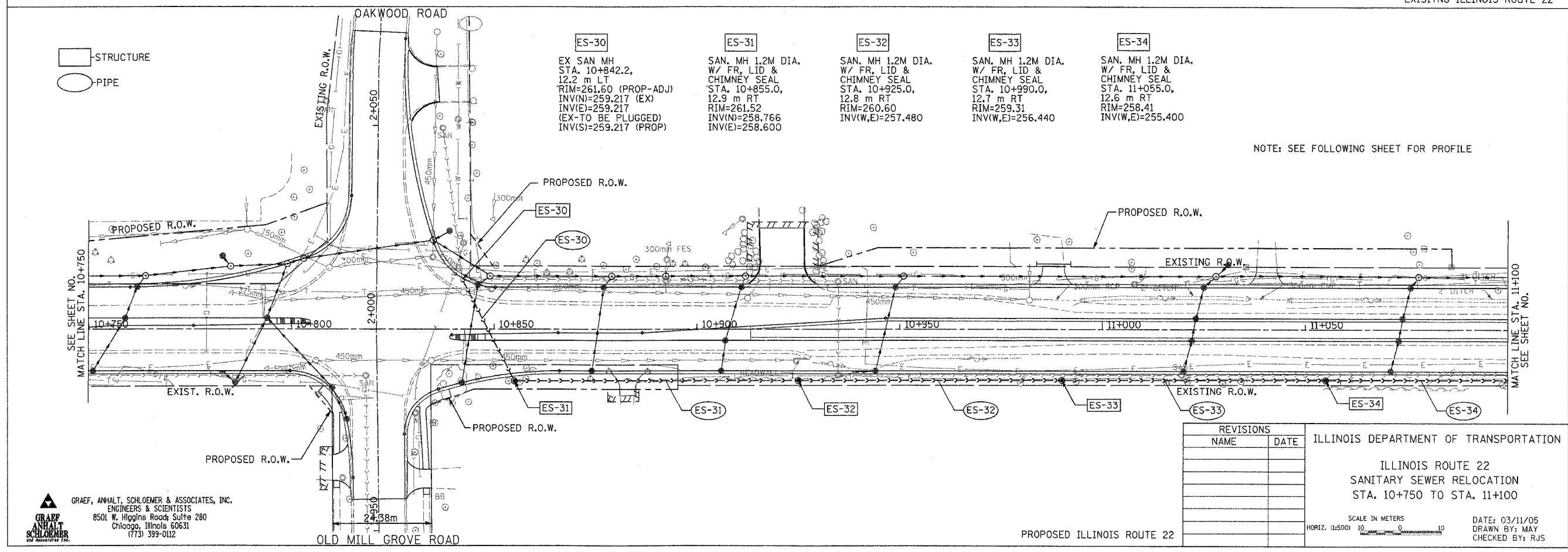
<b>ADJ</b>	STRUCTURE TO BE ADJUSTED
<b>F</b>	STRUCTURE TO BE FILLED
<b>R</b>	STRUCTURE TO BE REMOVED
<b>REC</b>	STRUCTURE TO BE RECONSTRUCTED
	PIPE ABANDONMENT (OR REMOVAL WHERE REQ'D)



STRUCTURE  
 PIPE

<b>ES-30</b> EX SAN MH STA. 10+842.2, 12.2 m LT RIM=261.60 (PROP-ADJ) INV(N)=259.217 (EX) INV(E)=259.217 (PROP)	<b>ES-31</b> SAN. MH 1.2M DIA. W/ FR, LID & CHIMNEY SEAL STA. 10+855.0, 12.9 m RT RIM=261.52 INV(N)=258.766 INV(E)=258.600	<b>ES-32</b> SAN. MH 1.2M DIA. W/ FR, LID & CHIMNEY SEAL STA. 10+925.0, 12.8 m RT RIM=260.60 INV(W,E)=257.480	<b>ES-33</b> SAN. MH 1.2M DIA. W/ FR, LID & CHIMNEY SEAL STA. 10+990.0, 12.7 m RT RIM=259.31 INV(W,E)=256.440	<b>ES-34</b> SAN. MH 1.2M DIA. W/ FR, LID & CHIMNEY SEAL STA. 11+055.0, 12.6 m RT RIM=258.41 INV(W,E)=255.400
---	--	--	--	--

NOTE: SEE FOLLOWING SHEET FOR PROFILE



**GRAEF, ANHALT, SCHLOEMER & ASSOCIATES, INC.**  
 ENGINEERS & SCIENTISTS  
 8501 W. Higgins Road, Suite 280  
 Chicago, Illinois 60631  
 (773) 399-0112

REVISIONS	
NAME	DATE

ILLINOIS DEPARTMENT OF TRANSPORTATION  
 ILLINOIS ROUTE 22  
 SANITARY SEWER RELOCATION  
 STA. 10+750 TO STA. 11+100

SCALE IN METERS  
 HORIZ. (1:500)

DATE: 03/11/05  
 DRAWN BY: MAY  
 CHECKED BY: RJS

**SANITARY SEWER RELOCATION IL. RTE. 22 STA. 10+750 TO STA. 11+100**

FILE: H:\Jobs\2003\20034205\CAD\DOT\_T\res\adg\1\03\text\pp3PLAN-SAN.dgn  
 DATE: 08-Mar-05 09:50