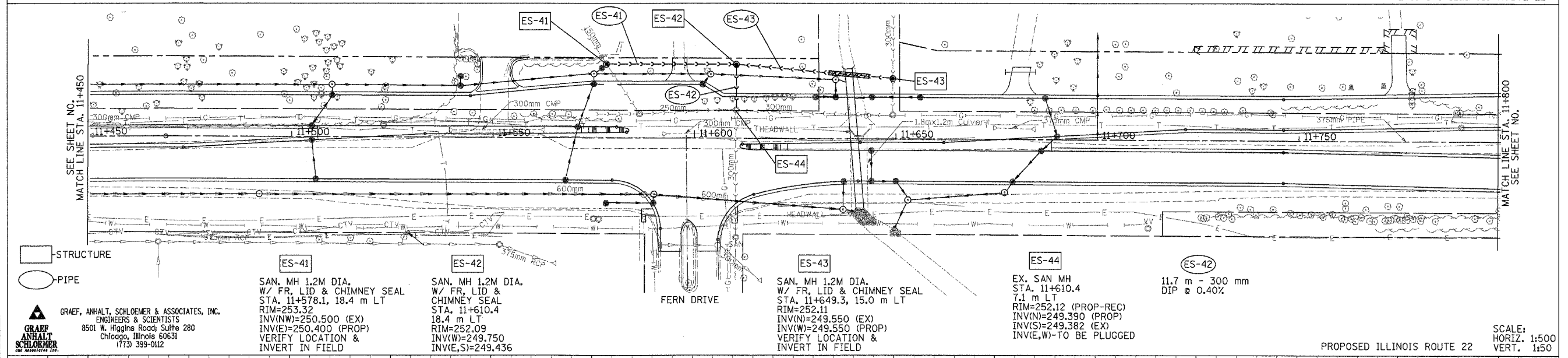
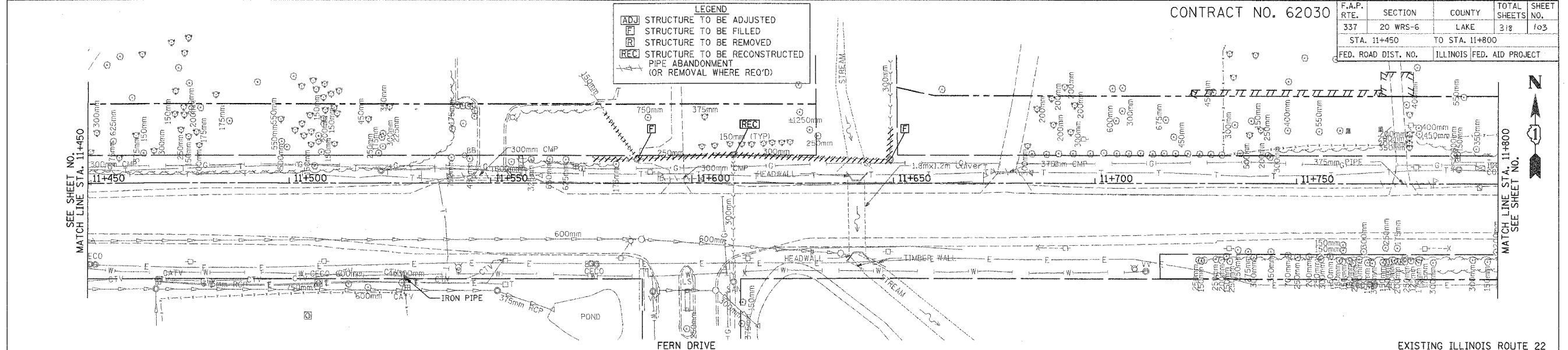


CONTRACT NO. 62030

F.A.P. RTE.	SECTION	COUNTY	TOTAL SHEETS	SHEET NO.
337	20 WRS-6	LAKE	318	103
STA. 11+450		TO STA. 11+800		
FED. ROAD DIST. NO.		ILLINOIS FED. AID PROJECT		

LEGEND

- ADJ STRUCTURE TO BE ADJUSTED
- F STRUCTURE TO BE FILLED
- R STRUCTURE TO BE REMOVED
- REC STRUCTURE TO BE RECONSTRUCTED
- PIPE ABANDONMENT (OR REMOVAL WHERE REQ'D)



□ STRUCTURE
○ PIPE

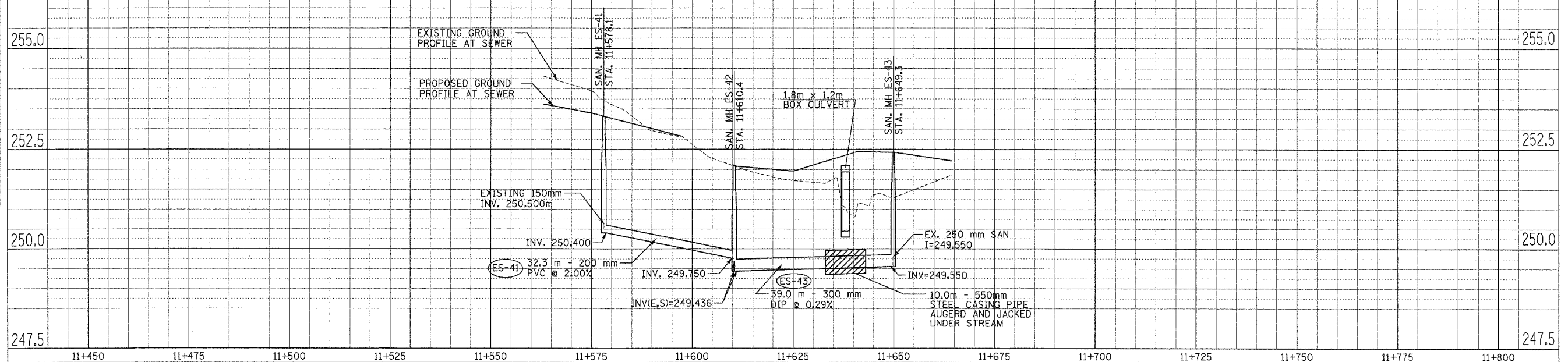
ES-41
SAN. MH 1.2M DIA.
W/ FR, LID & CHIMNEY SEAL
STA. 11+578.1, 18.4 m LT
RIM=253.32
INV(NW)=250.500 (EX)
INV(E)=250.400 (PROP)
VERIFY LOCATION &
INVERT IN FIELD

ES-42
SAN. MH 1.2M DIA.
W/ FR, LID & CHIMNEY SEAL
STA. 11+610.4
18.4 m LT
RIM=252.09
INV(W)=249.750
INV(E,S)=249.436

ES-43
SAN. MH 1.2M DIA.
W/ FR, LID & CHIMNEY SEAL
STA. 11+649.3, 15.0 m LT
RIM=252.11
INV(N)=249.550 (EX)
INV(W)=249.550 (PROP)
VERIFY LOCATION &
INVERT IN FIELD

ES-44
EX. SAN MH
STA. 11+610.4
7.1 m LT
RIM=252.12 (PROP-REC)
INV(N)=249.390 (PROP)
INV(S)=249.382 (EX)
INV(E,W)-TO BE PLUGGED

ES-42
11.7 m - 300 mm
DIP @ 0.40%



FINAL SURVEY BY DATE

CONVEYED BY DATE

NO. OF AREAS CHECKED

ORIGINAL SURVEY BY DATE

NO. OF AREAS CHECKED

GRAEF, ANHALT, SCHLOEMER & ASSOCIATES, INC.
ENGINEERS & SCIENTISTS
8501 W. Higgins Road, Suite 280
Chicago, Illinois 60631
(773) 399-0112

SCALE:
HORIZ. 1:500
VERT. 1:50