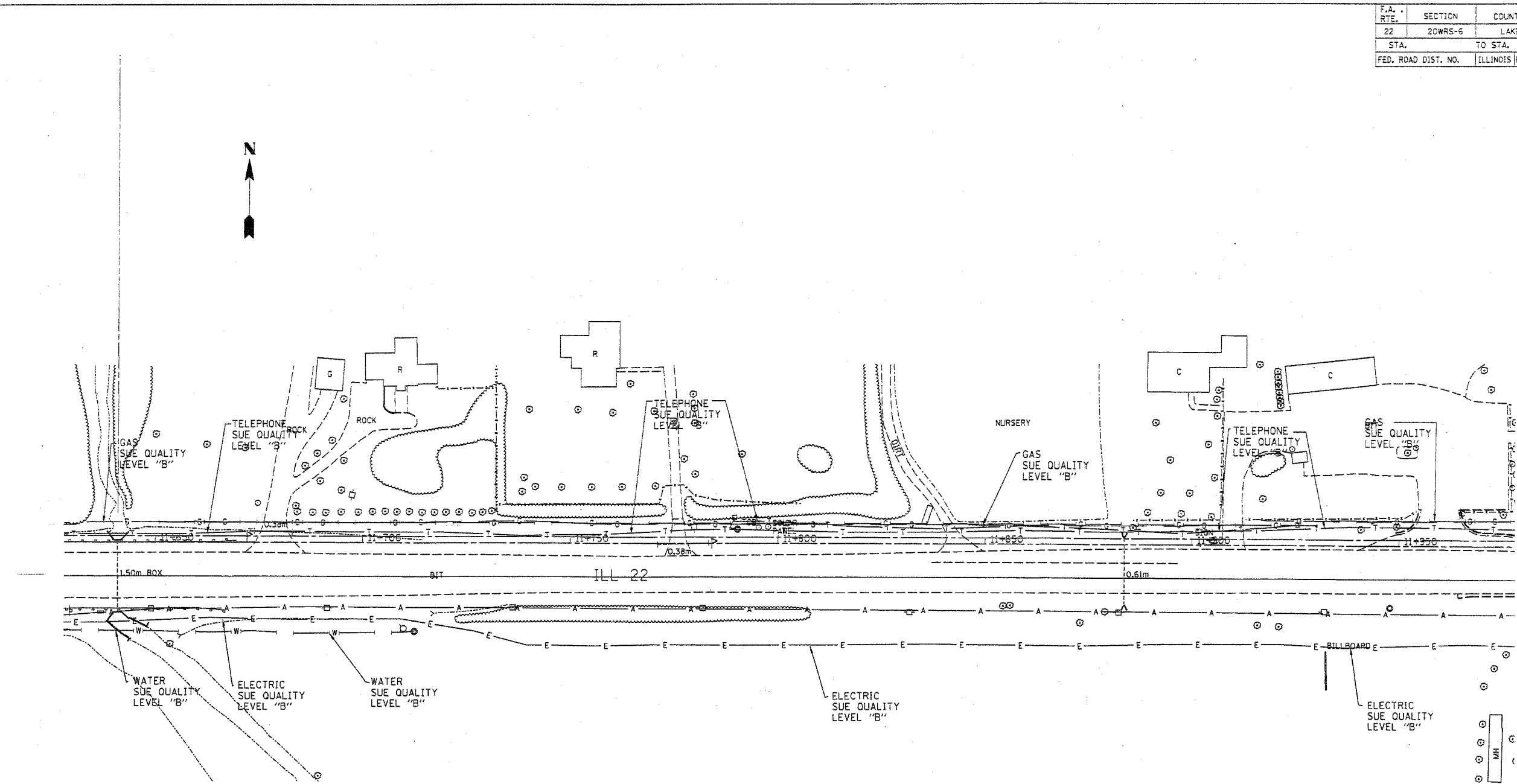


F.A. RTE.	SECTION	COUNTY	TOTAL SHEETS	SHEET NO.
22	20WRS-6	LAKE	3/8	1/1
STA.	TO STA.			
FED. ROAD DIST. NO.	ILLINOIS FED. AID PROJECT			




— T — T —	TELEPHONE
— W — W —	WATER
— G — G —	GAS
— CTV — CTV —	CABLE TELEVISION
— FO — FO —	FIBER OPTIC
— E — E —	ELECTRIC

TBE GROUP, INC.
 CIVIL ENGINEERING * TRANSPORTATION * ENVIRONMENTAL
 * PLANNING * UTILITY ENGINEERING/LOCATING
 SOUTHERN REGION: FL, GA, SC, NC
 NORTHERN REGION: IL, IN, MI, OH, MD, NJ, NY
 PA, VA, CANADA
 WESTERN REGION: AZ, NV, NM, TX, CA, OR, UT, WA

IL09500126
 TBE SUE PAGE NO: 6 of 11
 Signature *S. Adams*
 SUE Quality Level "A" : Test Holes
 SUE Quality Level "B" : Designating

Utilities shown on these plans as depicted in the legend have been investigated by TBE Group, Inc in accordance with SUE Industry Standards as of 4/16/02.
 All other information shown has been provided to TBE Group, Inc by others.

 205 W. WACKER DRIVE SUITE 1020 CHICAGO, IL 60606 (312) 704-1970	REVISIONS NAME DATE		ILLINOIS DEPARTMENT OF TRANSPORTATION SUE Investigation of Underground Utilities IL RT.22 E. of Beusching Rd. to Quetin Rd. SCALE : 500 SOL "B" DATE : 4/16/02
		DRAWN BY : JAC CHECKED BY :	