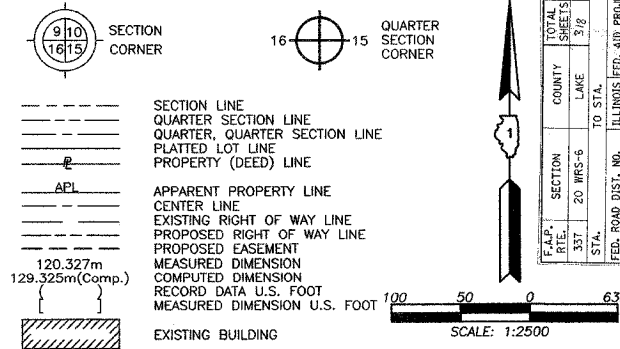


PART OF THE S. 1/2 OF SEC. 15, PART OF THE SE 1/4 OF SEC. 16, PART OF THE N. 1/2 OF SEC. 21 AND PART OF THE NW 1/4 OF SEC. 22, TWP. 43 N., R. 10 E. OF THE 3RD. P.M., IN LAKE COUNTY, ILLINOIS.

LEGEND



**Proposed Pavement Illinois Route 22 Curve #23**

P.I.	= Sta. 11+274.097
Δ	= 3'40.53"
R	= 2000.109m [6562.02']
T	= 64.279m [210.89']
L	= 128.514m [421.63']
E	= 1.033m [3.39']
P.C.	= Sta. 11+209.818
P.R.C.	= Sta. 11+338.332

**Proposed Pavement Illinois Route 22 Curve #24**

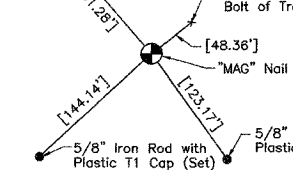
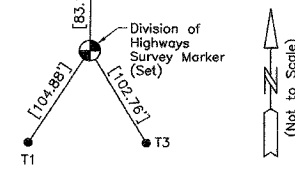
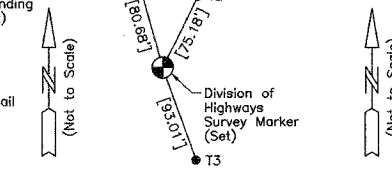
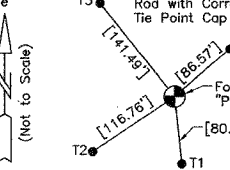
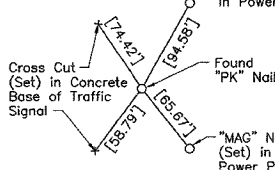
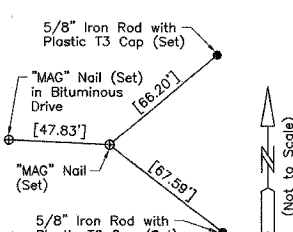
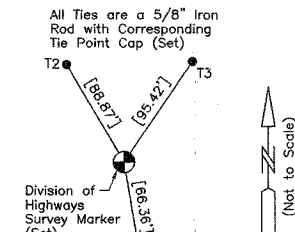
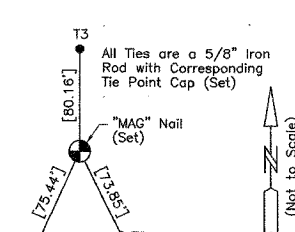
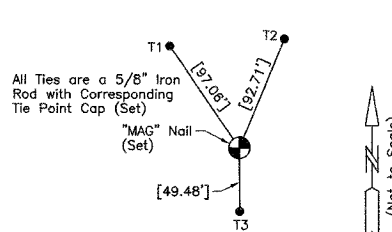
P.I.	= Sta. 11+403.577
Δ	= 3'44.12"
R	= 2000.109m [6562.02']
T	= 65.245m [214.06']
L	= 130.444m [427.97']
E	= 1.064m [3.49']
P.R.C.	= Sta. 11+338.332
P.T.	= Sta. 11+468.776

**Proposed Pavement Illinois Route 22 Curve #25**

P.I.	= Sta. 12+644.693
Δ	= 3'11.00"
R	= 2666.828m [8749.42']
T	= 74.105m [243.13']
L	= 148.172m [486.13']
E	= 1.029m [3.38']
P.C.	= Sta. 12+570.588
P.R.C.	= Sta. 12+718.760

**Proposed Pavement Illinois Route 22 Curve #26**

P.I.	= Sta. 12+792.865
Δ	= 3'11.00"
R	= 2666.828m [8749.42']
T	= 74.105m [243.13']
L	= 148.172m [486.13']
E	= 1.029m [3.38']
P.R.C.	= Sta. 12+718.760
P.T.	= Sta. 12+866.932



**Existing P.O.T. Illinois Route 22**  
Sta. 10+027.522  
N.614,100.0686-E.320,750.5804

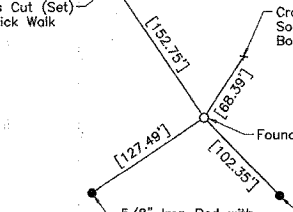
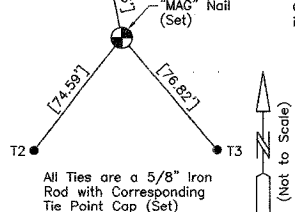
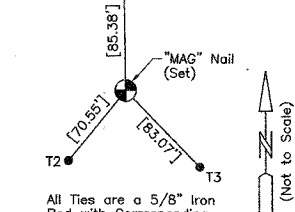
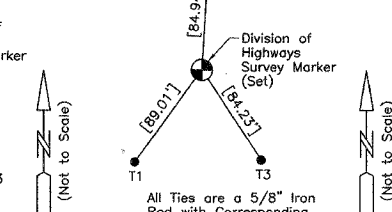
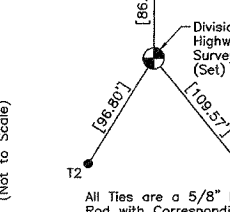
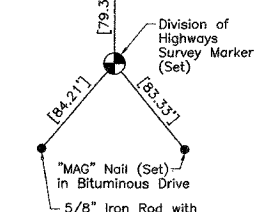
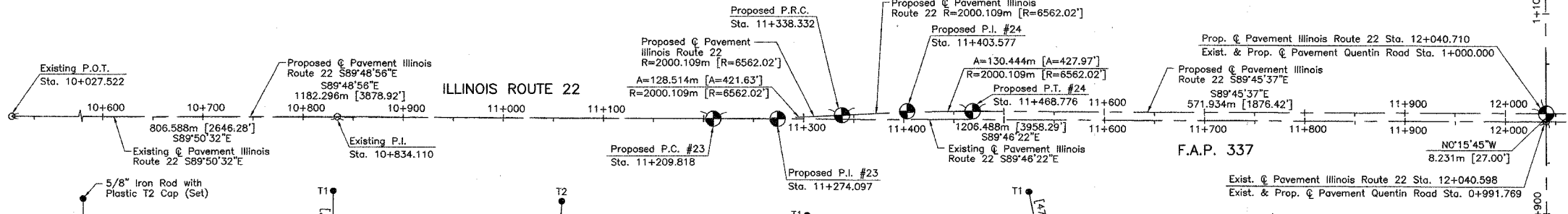
**Existing P.I. Illinois Route 22**  
Sta. 10+834.110  
N.614,097.8474-E.321,557.1650

**Proposed P.I. #24 Illinois Route 22**  
Sta. 11+209.818  
N.614,096.2643-E.321,932.8705

**Proposed P.T. #24 Illinois Route 22**  
Sta. 11+468.776  
N.614,103.6853-E.322,191.6770

**Proposed P.R.C. Illinois Route 22**  
Sta. 11+338.332  
N.614,099.9784-E.322,061.3087

**Existing P.O.T. Quentin Road**  
Sta. 1+550.000  
N.614,651.2863-E.322,760.8696



**Proposed P.C. #25 Illinois Route 22**  
Sta. 12+570.588  
N.614,099.5771-E.323,293.4817

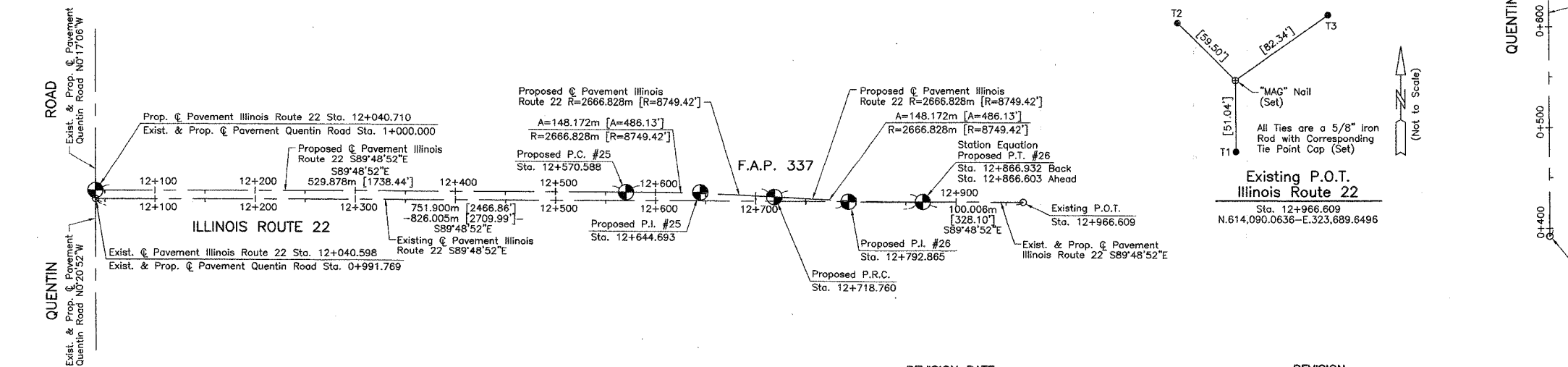
**Proposed P.I. #25 Illinois Route 22**  
Sta. 12+644.693  
N.614,094.9822-E.323,441.5632

**Proposed P.R.C. Illinois Route 22**  
Sta. 12+718.760  
N.614,094.9822-E.323,441.5632

**Proposed P.I. #26 Illinois Route 22**  
Sta. 12+792.865  
N.614,090.6274-E.323,515.5400

**Station Equation Proposed P.T. #26 Illinois Route 22**  
Sta. 12+866.932 Back  
Sta. 12+866.603 Ahead  
N.614,090.3874-E.323,589.6445

**Existing Illinois Route 22 Existing & Proposed Quentin Road**  
Sta. 12+040.598  
Sta. 0+991.769  
N.614,093.0625-E.322,763.6439



DATE AT LAKE VILLA, ILLINOIS THIS 21st DAY OF November 2002 A.D.  
 Christian H. Jorgensen, PRESIDENT  
 ILLINOIS PROFESSIONAL LAND SURVEYOR NO. 35-2797  
 LICENSE EXPIRATION DATE: NOVEMBER 30, 2002  
 NOTE: COORDINATES ARE GROUND VALUES AND CAN BE CONVERTED TO GRID VALUES BY MULTIPLYING THE PUBLISHED GROUND COORDINATES BY AN AVERAGE COMBINED SCALE FACTOR OF 0.9999454, AS PROVIDED BY THE ILLINOIS DEPARTMENT OF TRANSPORTATION.

JORGENSEN & ASSOCIATES, INC.  
 120 PARK AVENUE  
 LAKE VILLA, ILLINOIS 60046  
 (847) 356-3371 SHEET 1 IS A COVER SHEET AND IS NOT RECORDED.

**PLAT OF HIGHWAYS**  
 STATE OF ILLINOIS  
 DEPARTMENT OF TRANSPORTATION  
 F.A.P. 337 (ILLINOIS ROUTE 22)  
 SECTION LAKE COUNTY  
 PROJECT JOB NO. R-91-009-01  
 STATION 0+391.769 TO STATION 1+550.000  
 STATION 10+027.522 TO STATION 12+966.609  
 SCALE: 1:2500/1"=63.5 SHEET 26 OF 26

BUREAU OF LAND ACQUISITION  
 201 WEST CENTER COURT  
 SCHAUMBURG, ILLINOIS 60196