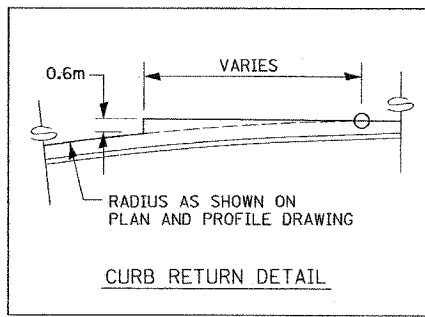
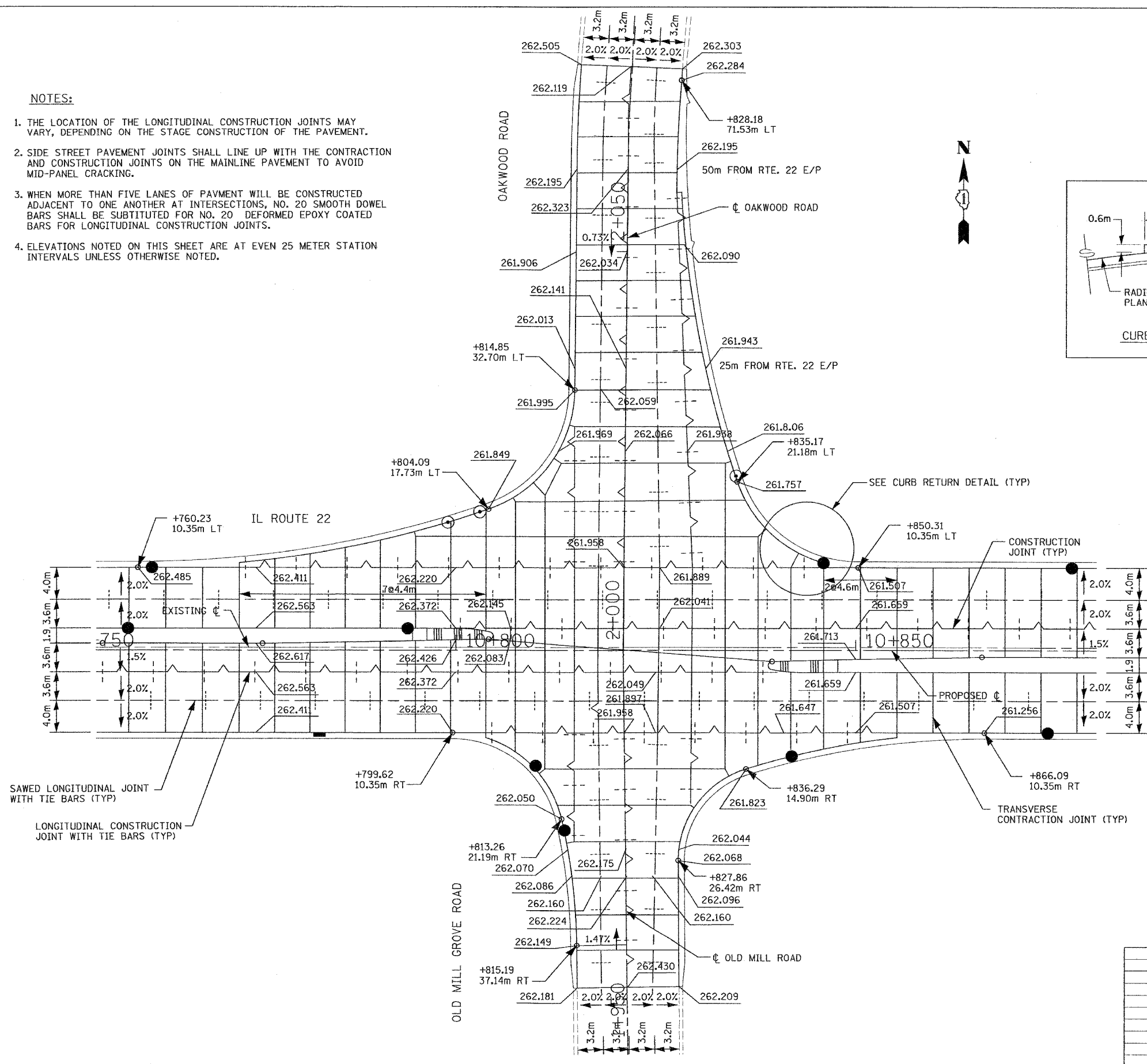


F.A.P. RTE.	SECTION	COUNTY	TOTAL SHEETS	SHEET NO.
337	20 WRS-6	LAKE	318	144
STA.	TO STA.			
FED. ROAD DIST. NO.		ILLINOIS FED. AID PROJECT		
CONTRACT NO. 62030				

**NOTES:**

1. THE LOCATION OF THE LONGITUDINAL CONSTRUCTION JOINTS MAY VARY, DEPENDING ON THE STAGE CONSTRUCTION OF THE PAVEMENT.
2. SIDE STREET PAVEMENT JOINTS SHALL LINE UP WITH THE CONTRACTION AND CONSTRUCTION JOINTS ON THE MAINLINE PAVEMENT TO AVOID MID-PANEL CRACKING.
3. WHEN MORE THAN FIVE LANES OF PAVEMENT WILL BE CONSTRUCTED ADJACENT TO ONE ANOTHER AT INTERSECTIONS, NO. 20 SMOOTH DOWEL BARS SHALL BE SUBSTITUTED FOR NO. 20 DEFORMED EPOXY COATED BARS FOR LONGITUDINAL CONSTRUCTION JOINTS.
4. ELEVATIONS NOTED ON THIS SHEET ARE AT EVEN 25 METER STATION INTERVALS UNLESS OTHERWISE NOTED.



REVISIONS		ILLINOIS DEPARTMENT OF TRANSPORTATION ILLINOIS ROUTE 22 INTERSECTION PAVEMENT JOINT LOCATION AND ELEVATIONS ILLINOIS ROUTE 22 AT OAKWOOD ROAD/OLD MILL GROVE ROAD
NAME	DATE	
		SCALE IN METERS HORIZ. (1:250)  DRAWN BY SMP DATE 03/11/05 CHECKED BY BOH