

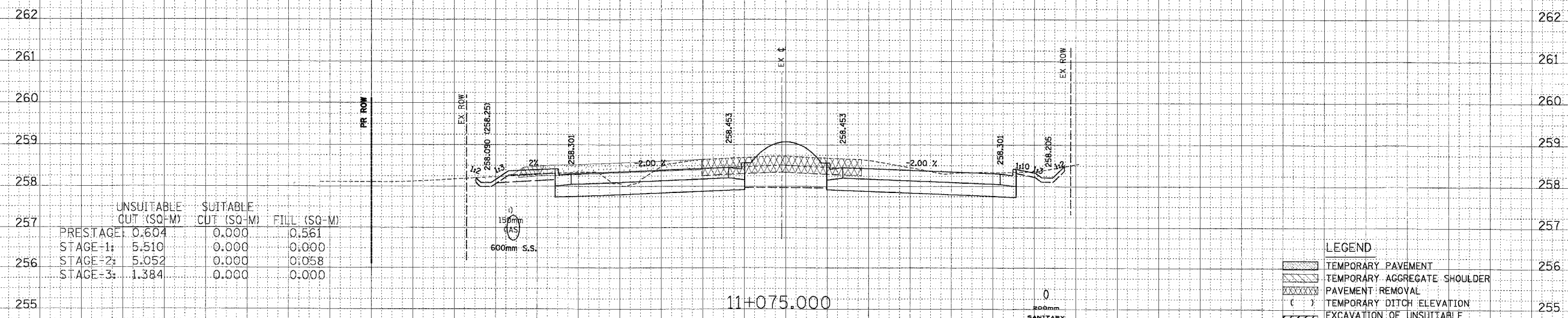
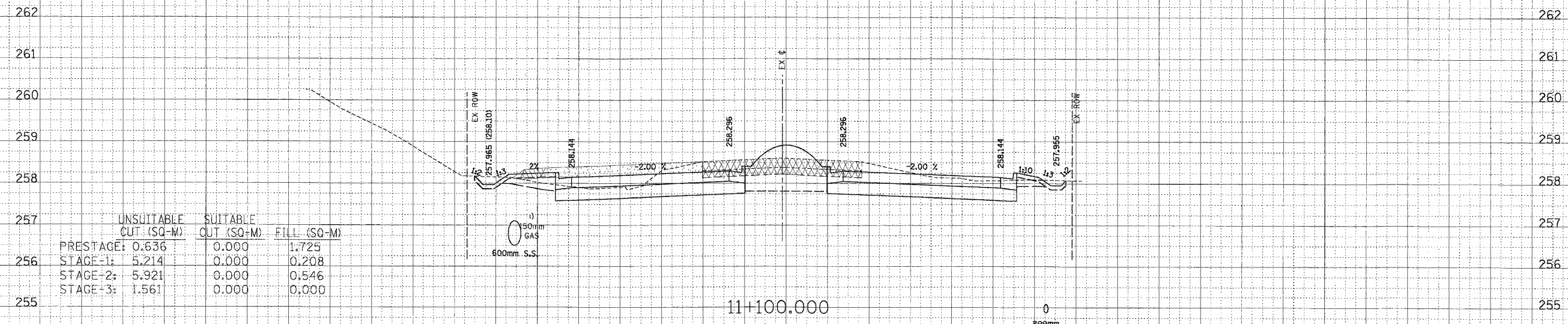
34 32 30 28 26 24 22 20 18 16 14 12 10 8 6 4 2 0 2 4 6 8 10 12 14 16 18 20 22 24 26

IL ROUTE 22

F.A.P. RTE.	SECTION	COUNTY	TOTAL SHEETS	SHEET NO.
337	20 WRS-6	LAKE	3/8	243
STA. 11+075		TO STA. 11+100		
FED. ROAD DIST. NO.		ILLINOIS FED. AID PROJECT		
CONTRACT NO. 62030				

FINAL SURVEY	DATE
BY	
NOTED	
NO.	

ORIGINAL SURVEY	DATE
BY	
NOTED	
NO.	



LEGEND	
[Pattern]	TEMPORARY PAVEMENT
[Pattern]	TEMPORARY AGGREGATE SHOULDER
[Pattern]	PAVEMENT REMOVAL
[Symbol]	TEMPORARY DITCH ELEVATION
[Pattern]	EXCAVATION OF UNSUITABLE SOIL FOR UNDERCUTS
[Pattern]	POROUS GRANULAR EMBANKMENT, SUBGRADE

34 32 30 28 26 24 22 20 18 16 14 12 10 8 6 4 2 0 2 4 6 8 10 12 14 16 18 20 22 24 26 28 30 32 34