

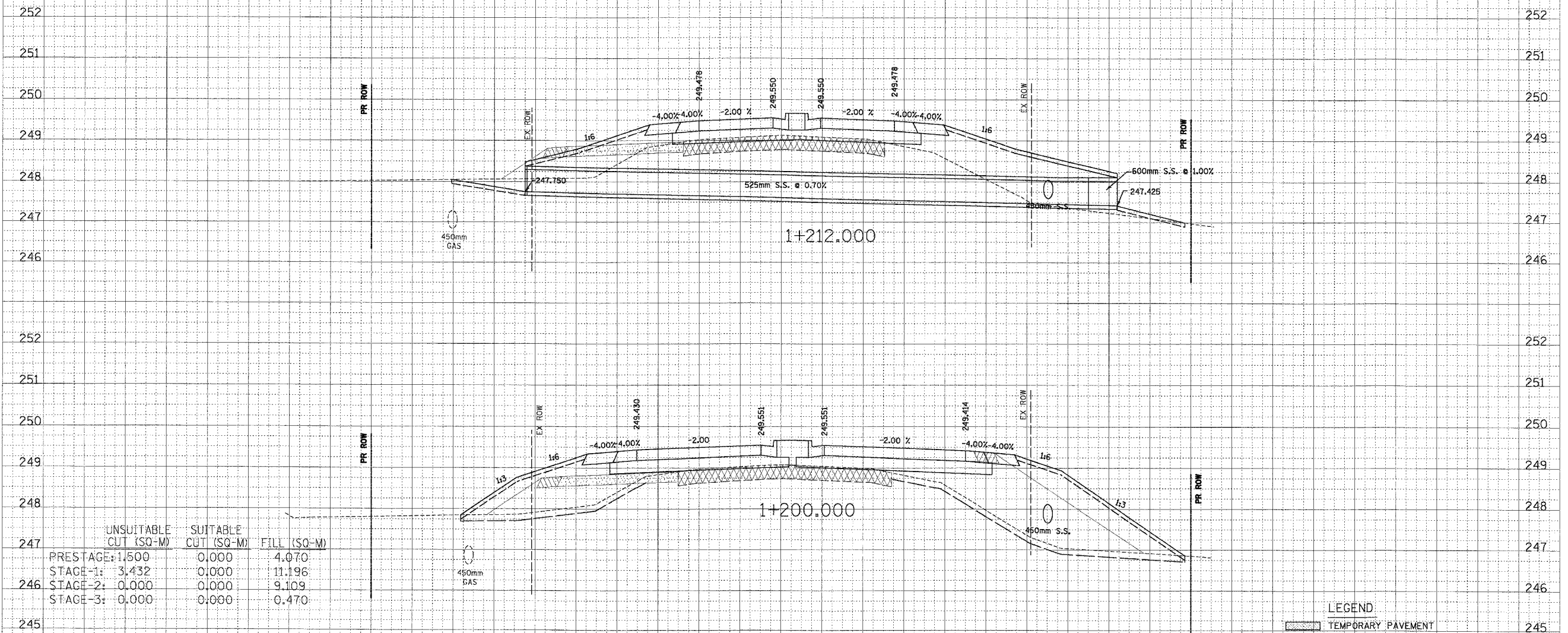
34 32 30 28 26 24 22 20 18 16 14 12 10 8 6 4 2 0 2 4 6 8 10 12 14 16 18 20 22 24 26

QUENTIN ROAD

F.A.P. RTE. 337	SECTION 20 WRS-6	COUNTY LAKE	TOTAL SHEETS 3/8	SHEET NO. 309
STA. 1+200		TO STA. 1+212		
FED. ROAD DIST. NO.		ILLINOIS FED. AID PROJECT		
CONTRACT NO. 62030				

FINAL SURVEY	DATE
BY	
REVISIONS	
NO. DATE	
BY	
REVISIONS	
NO. DATE	
BY	
REVISIONS	
NO. DATE	
BY	
REVISIONS	
NO. DATE	

ORIGINAL SURVEY	DATE
BY	
REVISIONS	
NO. DATE	
BY	
REVISIONS	
NO. DATE	
BY	
REVISIONS	
NO. DATE	
BY	
REVISIONS	
NO. DATE	



	UNSUITABLE CUT (SQ-M)	SUITABLE CUT (SQ-M)	FILL (SQ-M)
PRESTAGE:	1.500	0.000	4.070
STAGE-1:	3.432	0.000	11.196
STAGE-2:	0.000	0.000	9.109
STAGE-3:	0.000	0.000	0.470

- LEGEND:**
- TEMPORARY PAVEMENT
  - TEMPORARY AGGREGATE SHOULDER
  - PAVEMENT REMOVAL
  - TEMPORARY DITCH ELEVATION
  - EXCAVATION OF UNSUITABLE SOIL FOR UNDERCUTS
  - POROUS GRANULAR EMBANKMENT, SUBGRADE

34 32 30 28 26 24 22 20 18 16 14 12 10 8 6 4 2 0 2 4 6 8 10 12 14 16 18 20 22 24 26 28 30 32 34