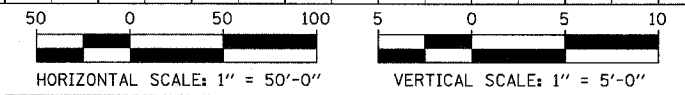
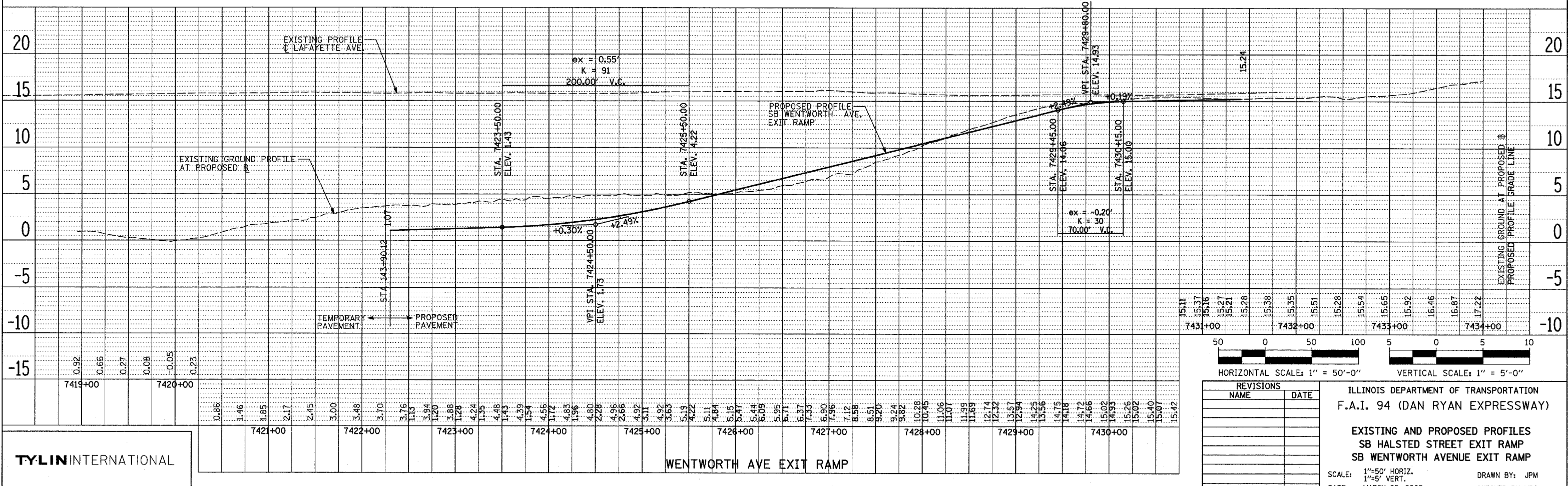
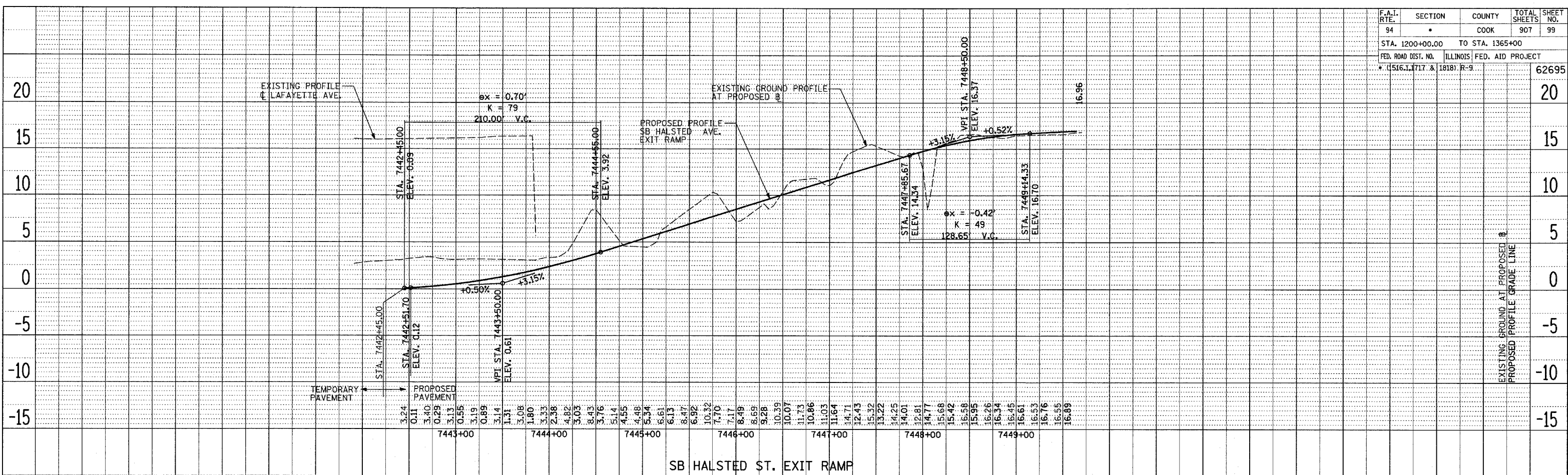


F.A.I. RTE.	SECTION	COUNTY	TOTAL SHEETS	SHEET NO.
94	•	COOK	907	99
STA. 1200+00.00		TO STA. 1365+00		
FED. ROAD DIST. NO.	ILLINOIS	FED. AID PROJECT		
• (1516.1, 1717 & 1818) R-9			62695	



REVISIONS	
NAME	DATE

ILLINOIS DEPARTMENT OF TRANSPORTATION
 F.A.I. 94 (DAN RYAN EXPRESSWAY)

**EXISTING AND PROPOSED PROFILES
 SB HALSTED STREET EXIT RAMP
 SB WENTWORTH AVENUE EXIT RAMP**

SCALE: 1"=50' HORIZ.
 1"=5' VERT.
 DATE: MARCH 25, 2005

DRAWN BY: JPM
 CHECKED BY: MFG

TYLIN INTERNATIONAL

PLAN SURVEYED, PLOTTED, CHECKED, REVISIONS, DATE, BY, DATE, NOTE BOOK NO., CAD FILE NAME

PLAN SURVEYED, PLOTTED, CHECKED, REVISIONS, DATE, BY, DATE, NOTE BOOK NO., CAD FILE NAME

03/30/2005 01:46:27 PM