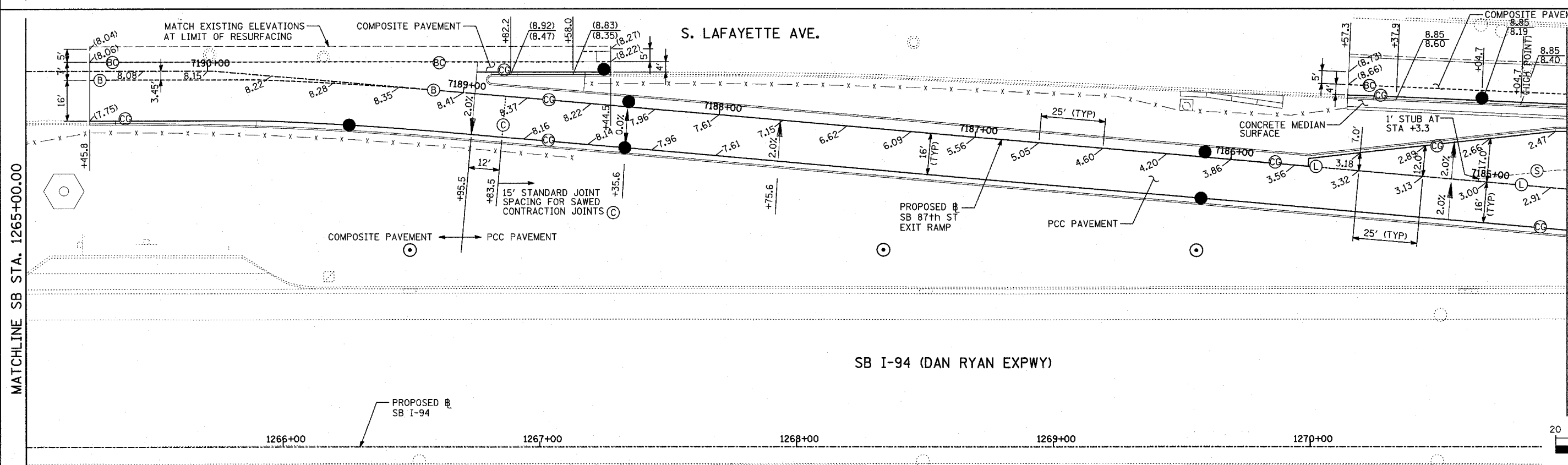
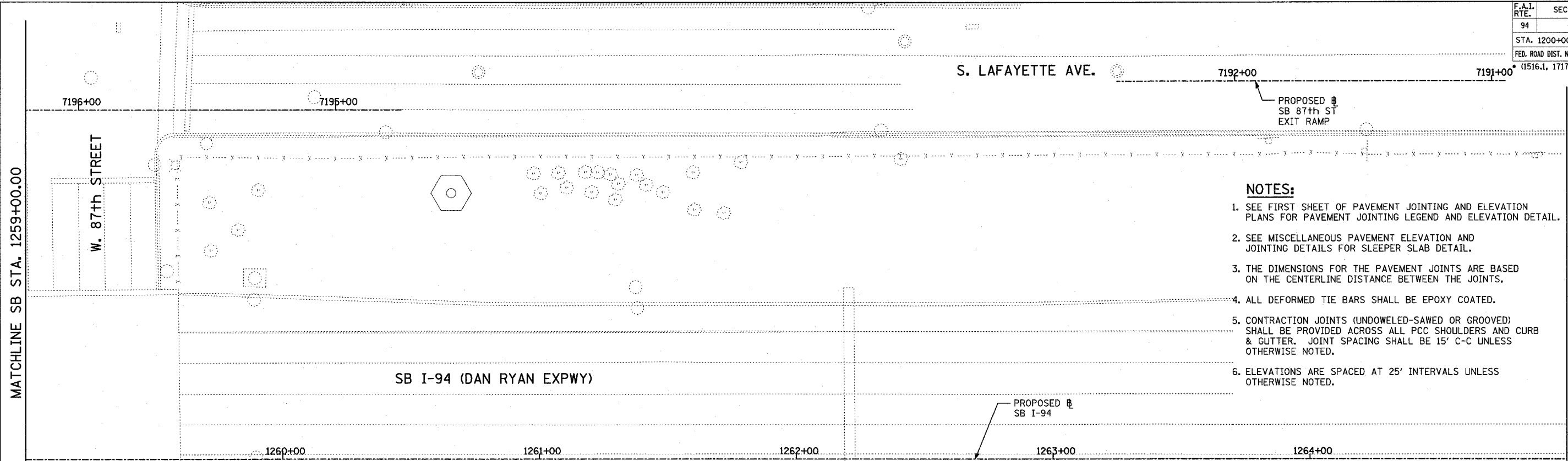
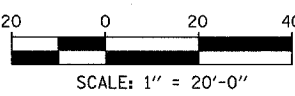
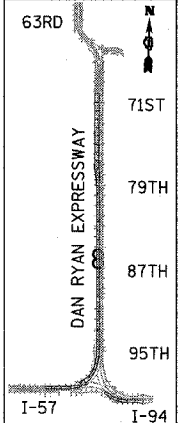


F.A.I. RTE.	SECTION	COUNTY	TOTAL SHEETS	SHEET NO.
94		COOK	907	120
STA. 1200+00.00 TO STA. 1365+00				
FED. ROAD DIST. NO. ILLINOIS			FED. AID PROJECT	
(1516.1, 1717 & 1818) R-9			62695	



MATCHLINE SB STA. 1265+00.00

MATCHLINE SB STA. 1271+00.00



REVISIONS		ILLINOIS DEPARTMENT OF TRANSPORTATION	
NAME	DATE	F.A.I. 94 (DAN RYAN EXPRESSWAY)	
		PAVEMENT JOINTING AND ELEVATION PLAN	
		SB 87th STREET EXIT RAMP	
		SB I-94 STA. 1259+00.00 TO 1271+00.00	
		SCALE: 1"=20'	DRAWN BY: JPM
		DATE: MARCH 25, 2005	CHECKED BY: JPM, MAG
REVISED	04/15/05		

TYLIN INTERNATIONAL

P:\02313\road\1717\1717\1717.dwg

04/14/2005 10:45:09 AM