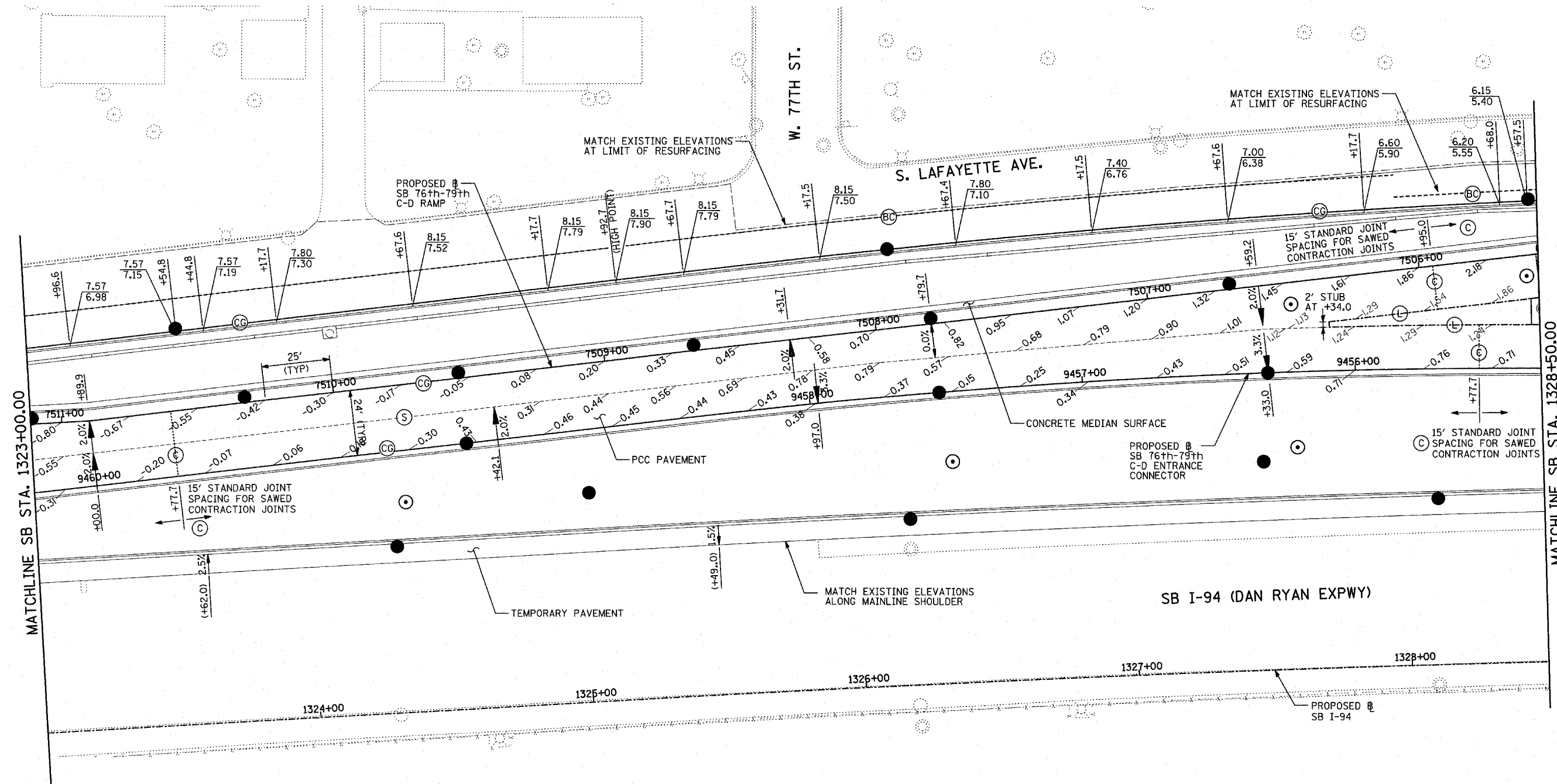
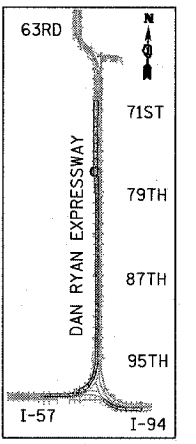


F.A.I. RTE.	SECTION	COUNTY	TOTAL SHEETS	SHEET NO.
94		COOK	907	124
STA. 1200+00.00		TO STA. 1365+00		
FED. ROAD DIST. NO.	ILLINOIS	FED. AID PROJECT		
(1516.1, 1717 & 1818) R-9		62695		



MATCHLINE SB STA. 1328+50.00

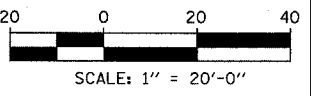
MATCHLINE SB STA. 1323+00.00



LOCATION MAP

- NOTES:**
- SEE FIRST SHEET OF PAVEMENT JOINTING AND ELEVATION PLANS FOR PAVEMENT JOINTING LEGEND AND ELEVATION DETAIL.
  - SEE MISCELLANEOUS PAVEMENT ELEVATION AND JOINTING DETAILS FOR SLEEPER SLAB DETAIL.
  - THE DIMENSIONS FOR THE PAVEMENT JOINTS ARE BASED ON THE CENTERLINE DISTANCE BETWEEN THE JOINTS.
  - ALL DEFORMED TIE BARS SHALL BE EPOXY COATED.
  - CONTRACTION JOINTS (UNDOWELED-SAWED OR GROOVED) SHALL BE PROVIDED ACROSS ALL PCC SHOULDERS AND CURB & GUTTER. JOINT SPACING SHALL BE 15' C-C UNLESS OTHERWISE NOTED.
  - ELEVATIONS ARE SPACED AT 25' INTERVALS UNLESS OTHERWISE NOTED.

**LEGEND:**  
 (+XX.X) MAINLINE # STATION  
 +XX.X RAMP # STATION



REVISIONS		ILLINOIS DEPARTMENT OF TRANSPORTATION	
NAME	DATE	F.A.I. 94 (DAN RYAN EXPRESSWAY)	
		PAVEMENT JOINTING AND ELEVATION PLAN	
		SB I-94 STA. 1323+00.00 TO 1328+50.00	
		SCALE: 1"=20'	DRAWN BY: JPM
		DATE: MARCH 25, 2005	CHECKED BY: JPM, MAG
REVISED	04/15/05		

**TYLIN** INTERNATIONAL

04/15/2005 06:24:45 AM