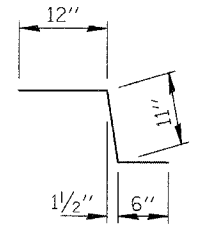


F.A.I. RTE.	SECTION	COUNTY	TOTAL SHEETS	SHEET NO.
94	*	COOK	907	130
STA.	TO STA.			
FED. ROAD DIST. NO.	ILLINOIS	FED. AID PROJECT		
*(1516.1, 1717 & 1818) R-9			62695	

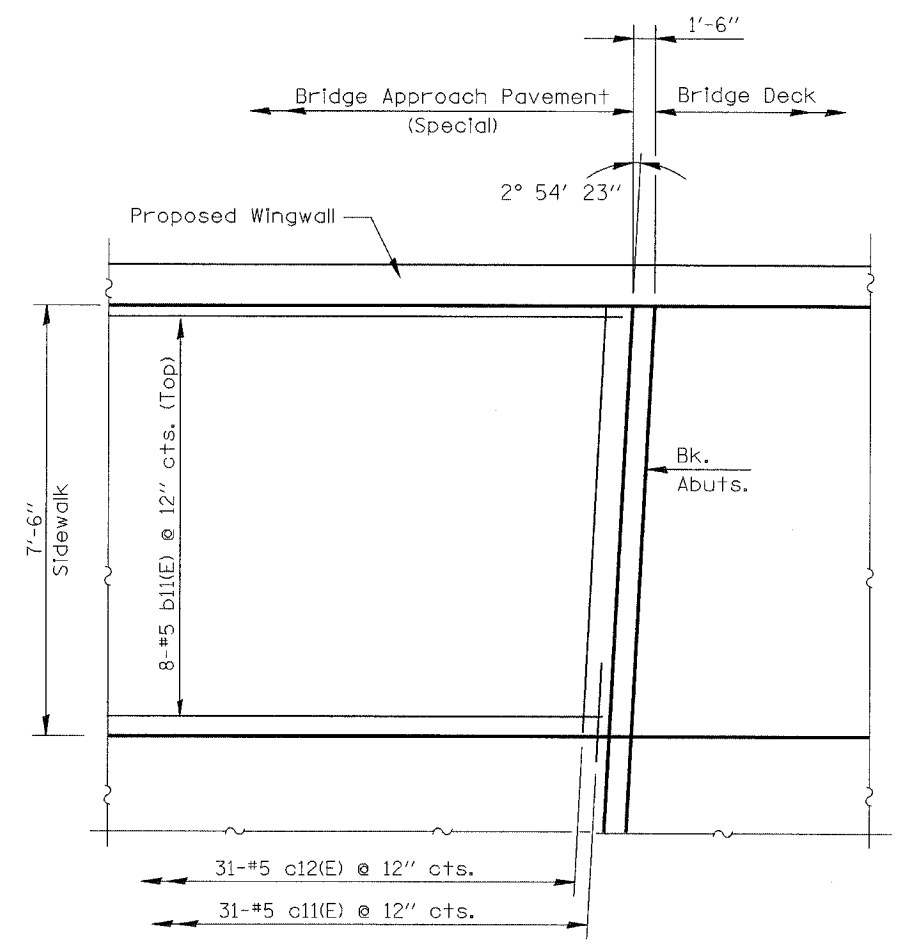


BAR c11(E)

**TWO SIDEWALK ON APPROACH PAV'TS
BILL OF MATERIALS**

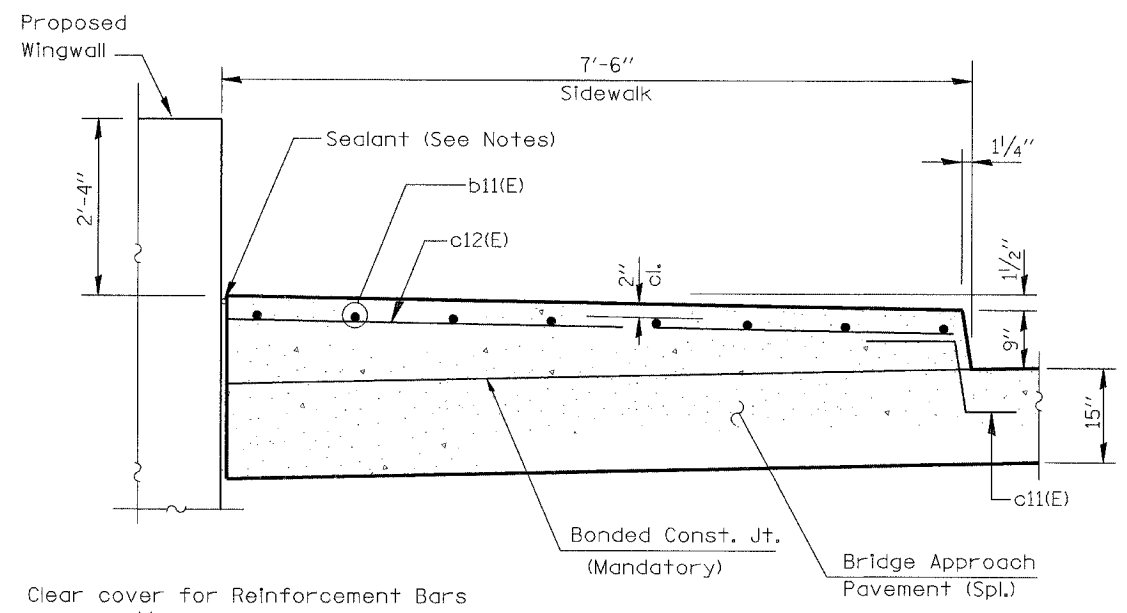
Bar	No.	Size	Length	Shape
b11(E)	32	#5	29'-8"	
c11(E)	124	#5	2'-5"	
c12(E)	124	#5	7'-2"	
Reinforcement Bars Epoxy Coated			Pound	2,240
Concrete Superstructure			Cu. Yd.	30.0

QUANTITIES ARE SHOWN FOR INFORMATION ONLY. COST IS INCLUDED WITH BRIDGE APPROACH PAVEMENT (SPECIAL).



PLAN - SIDEWALK & WINGWALL

(North - West as shown, other corners similar)



SECTION THRU SIDEWALK & WINGWALL

Clear cover for Reinforcement Bars shall be 1/2" except as noted.

NOTES:

Work this Sheet with Sheets 1 & 2 of "Bridge Approach Pavement (Special)" Sheets.

Reinforcement Bars designated (E) shall be epoxy coated.

Sealant shall be non-staining gray one component non-sag elastomeric gun grade polyurethane meeting the requirements of ASTM C-920, Type S, Grade NS, Class 25, Use T.

REVISIONS	
NAME	DATE

ILLINOIS DEPARTMENT OF TRANSPORTATION
F.A.I. 94 (DAN RYAN EXPRESSWAY)
BRIDGE APPROACH PAVEMENT (SPECIAL)
SCALE: NONE
DATE: MARCH 25, 2005
DRAWN BY:
CHECKED BY:

FILE: L:\62695\02\Drawn\Drawings\Proposed\Drawings\62695\02\Drawn\02.dwg

