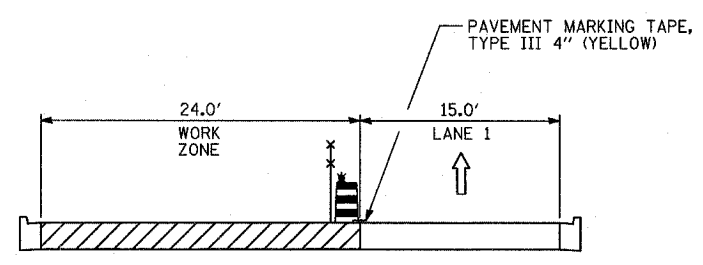
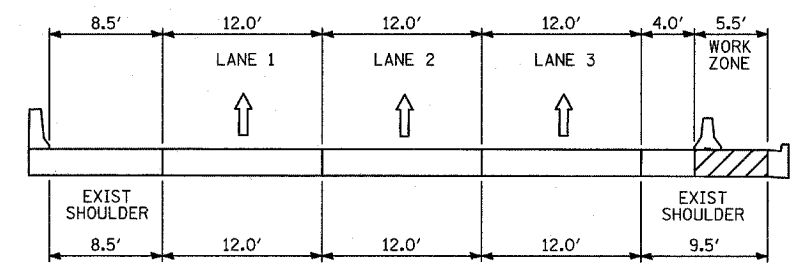


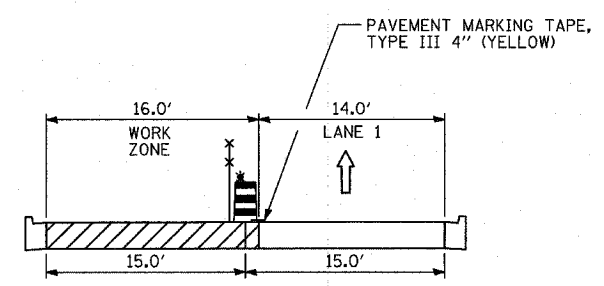
SECTION E-E



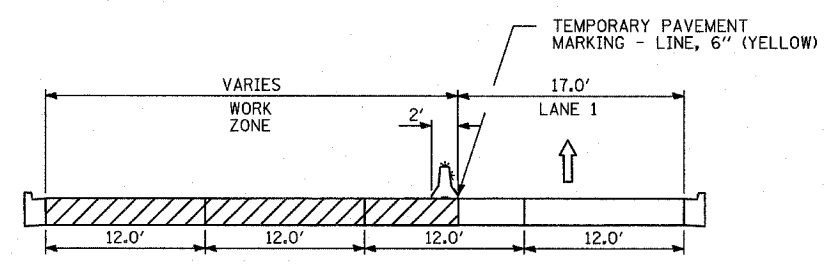
SECTION H-H



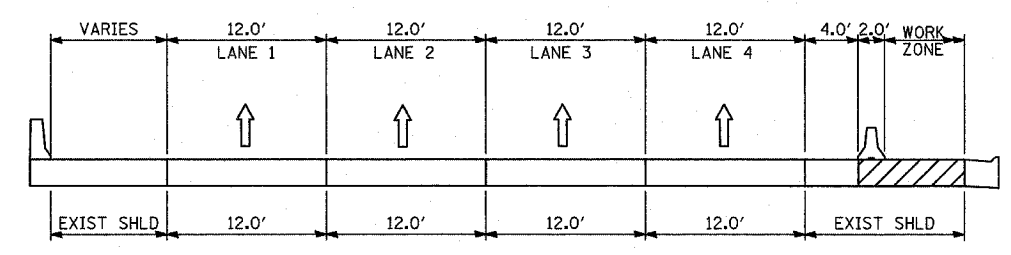
SECTION K-K



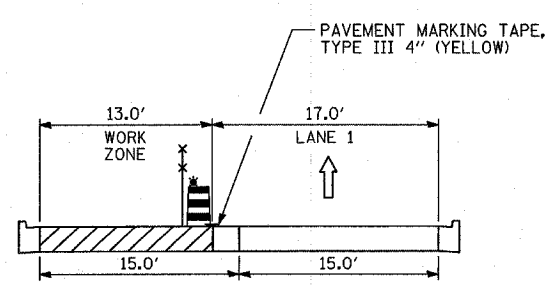
SECTION F-F



SECTION I-I

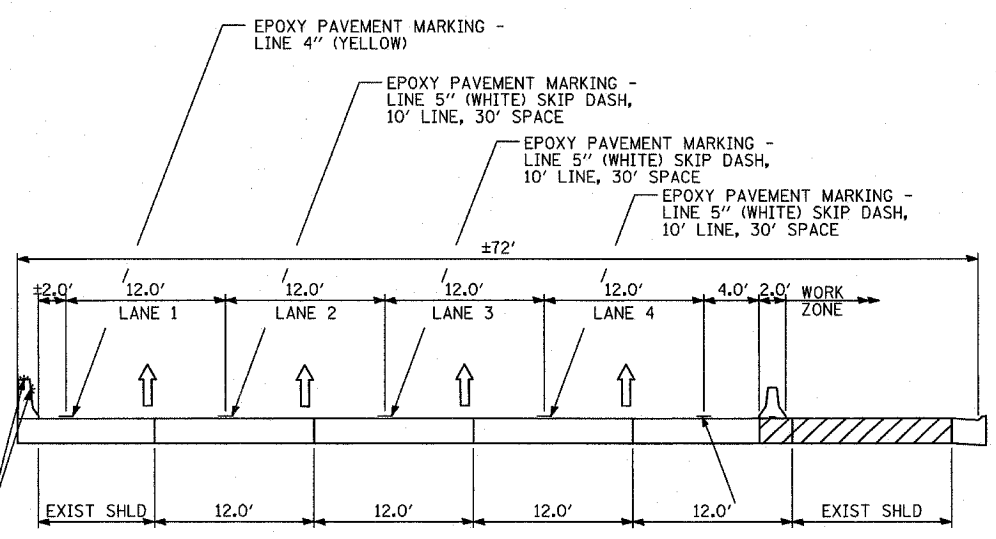


SECTION L-L



SECTION G-G

ADDITIONAL MONODIRECTIONAL PRISMATIC BARRIER REFLECTORS MOUNTED ON TOP AND SIDE OF EXISTING BARRIER WALL (50' C-C)



SECTION J-J

- LEGEND:**
- TEMPORARY CONCRETE BARRIER (WITH REFLECTORS ON TOP AND SIDE FACING TRAFFIC)
  - TRAFFIC MOVEMENT
  - DRUM WITH MONO-DIRECTIONAL STEADY BURNING LIGHT
  - SINGLE-FACE CONCRETE BARRIER, 32"
  - TEMPORARY CHAIN LINK FENCE (PORTABLE)
  - WORK ZONE
- REFER TO MOT PLAN SHEETS FOR LOCATIONS OF TYPICAL SECTIONS

REVISIONS	
NAME	DATE

ILLINOIS DEPARTMENT OF TRANSPORTATION  
 F.A.I. 94 (DAN RYAN EXPRESSWAY)  
 GENERAL NOTES  
 CONSTRUCTION STAGING NOTES  
 MAINTENANCE OF TRAFFIC DETAILS  
 SHEET 2 OF 3

SCALE: NO SCALE  
 DATE: MARCH 25, 2005  
 DRAWN BY: JPA, RTM  
 CHECKED BY: MAG, JPM