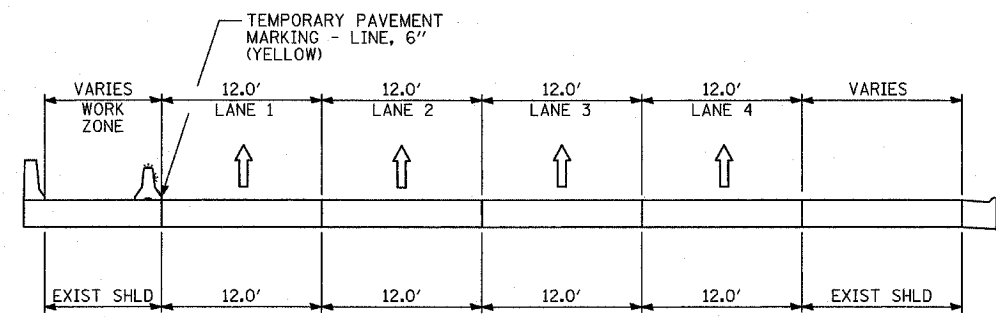
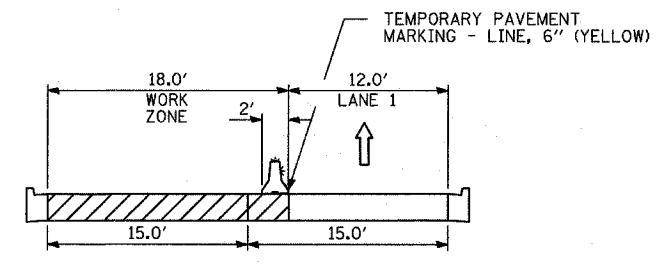


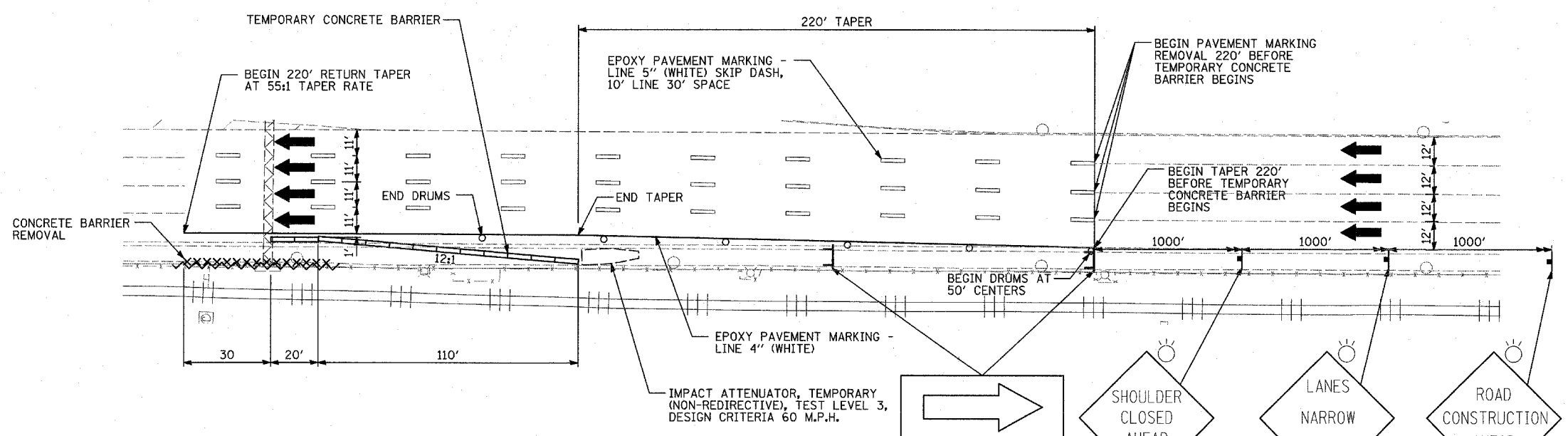
F.A.I. RTE.	SECTION	COUNTY	TOTAL SHEETS	SHEET NO.
94	•	COOK	905	139
STA. 1200+00.00		TO STA. 1365+00		
FED. ROAD DIST. NO.		ILLINOIS FED. AID PROJECT		
(1516.1, 1717 & 1818) R-9		62695		



SECTION M-M



SECTION N-N



- LEGEND:**
- TEMPORARY CONCRETE BARRIER (WITH REFLECTORS ON TOP AND SIDE FACING TRAFFIC)
  - TRAFFIC MOVEMENT
  - DRUM WITH MONO-DIRECTIONAL STEADY BURNING LIGHT
  - SINGLE-FACE CONCRETE BARRIER, 32"
  - TEMPORARY CHAIN LINK FENCE (PORTABLE)
  - WORK ZONE
- REFER TO MOT PLAN SHEETS FOR LOCATIONS OF TYPICAL SECTIONS

W1-6R(0)-6030

SHOULDER CLOSED AHEAD

LANES NARROW AHEAD

ROAD CONSTRUCTION AHEAD

W20-1(0)-48

**TYPICAL MAINTENANCE OF TRAFFIC FOR OVERHEAD SIGN TRUSS FOUNDATION IN CTA MEDIAN**

QUANTITIES FOR EACH SIGN TRUSS LOCATION HAVE BEEN ADDED INTO THE FINAL SUMMARY OF QUANTITIES BASED ON THIS DETAIL

REVISIONS	
NAME	DATE

ILLINOIS DEPARTMENT OF TRANSPORTATION  
 F.A.I. 94 (DAN RYAN EXPRESSWAY)  
 GENERAL NOTES  
 CONSTRUCTION STAGING NOTES  
 MAINTENANCE OF TRAFFIC DETAILS  
 SHEET 3 OF 3

SCALE: NO SCALE  
 DATE: MARCH 25, 2005  
 DRAWN BY: JPA, RTM  
 CHECKED BY: MAG, JPM

**TYLIN**INTERNATIONAL