

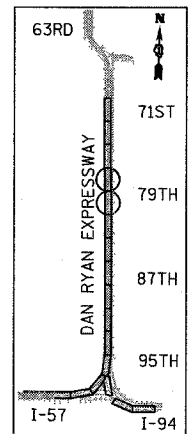
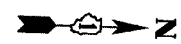
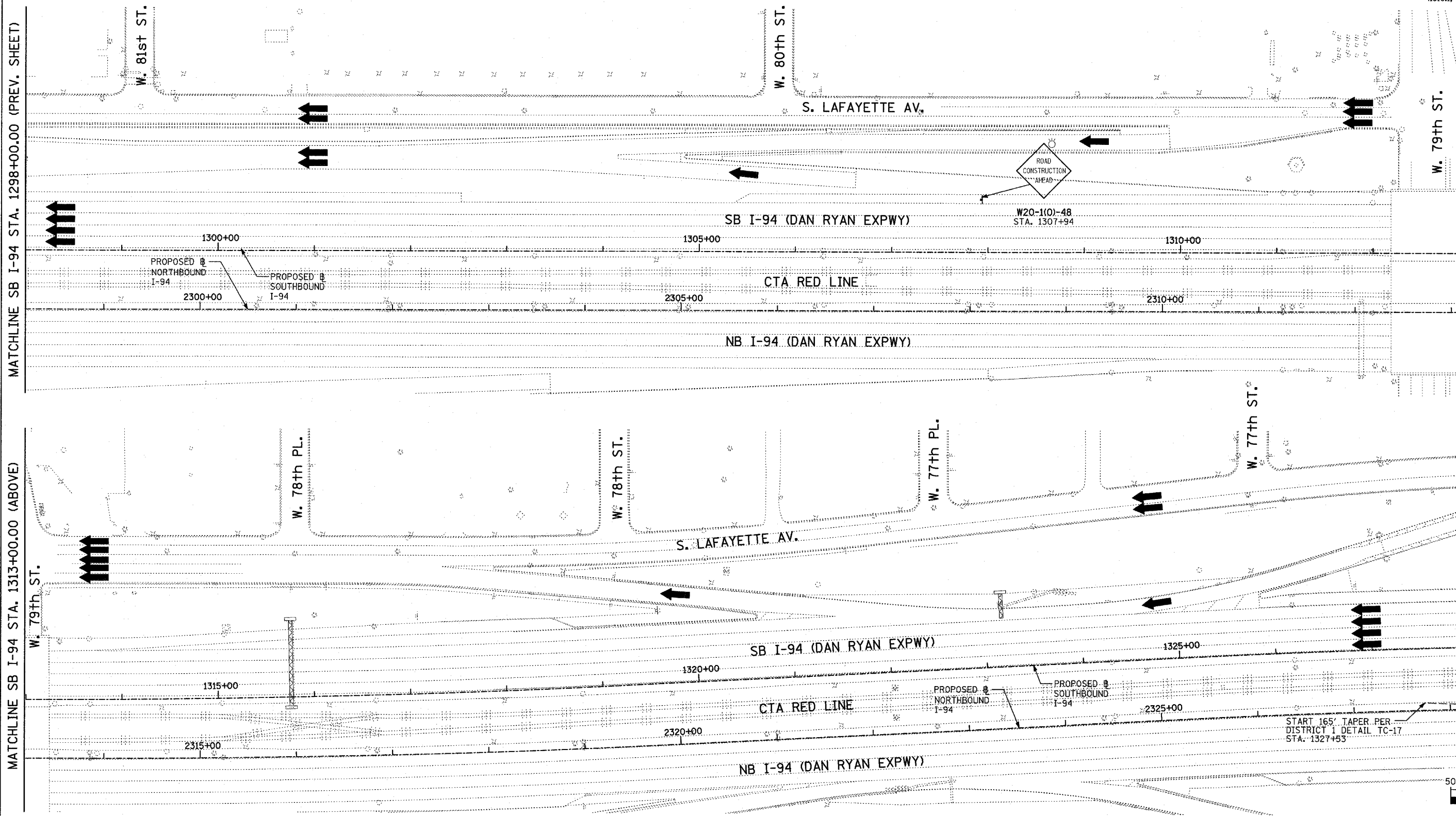
F.A.I. RTE.	SECTION	COUNTY	TOTAL SHEETS	SHEET NO.
94		COOK	905	146
STA. 1200+00.00 TO STA. 1365+00				
FED. ROAD DIST. NO.	ILLINOIS	FED. AID PROJECT		
• (1516.1, 1717 & 1818) R-9		62695		

MATCHLINE SB I-94 STA. 1298+00.00 (PREV. SHEET)

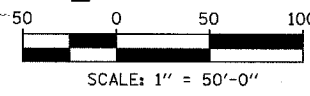
MATCHLINE SB I-94 STA. 1313+00.00 (ABOVE)

MATCHLINE SB I-94 STA. 1313+00.00 (BELOW)

MATCHLINE SB I-94 STA. 1328+00.00 (NEXT SHEET)



LOCATION MAP



**LEGEND:**

- TEMPORARY CONCRETE BARRIER
- TRAFFIC LANE
- WORK ZONE
- BARRICADE, TYPE III
- DRUM WITH MONO-DIRECTIONAL STEADY BURNING LIGHT
- ARROW BOARD

REVISIONS	
NAME	DATE

ILLINOIS DEPARTMENT OF TRANSPORTATION  
 F.A.I. 94 (DAN RYAN EXPRESSWAY)  
 MAINTENANCE OF TRAFFIC PLAN  
 SB I-94 - STAGE 1  
 SB I-94 STA. 1298+000 TO 1328+00  
 SHEET 7 OF 9

SCALE: 1"=50'-0"  
 DATE: MARCH 25, 2005  
 DRAWN BY: JPA, RTM  
 CHECKED BY: MAG, JPM

TYLIN INTERNATIONAL

03/29/2005 02:26:28 PM