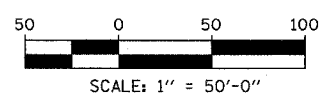
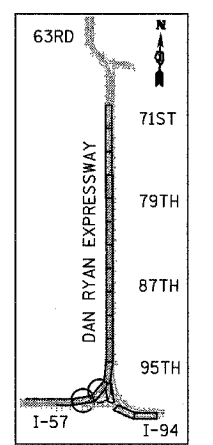
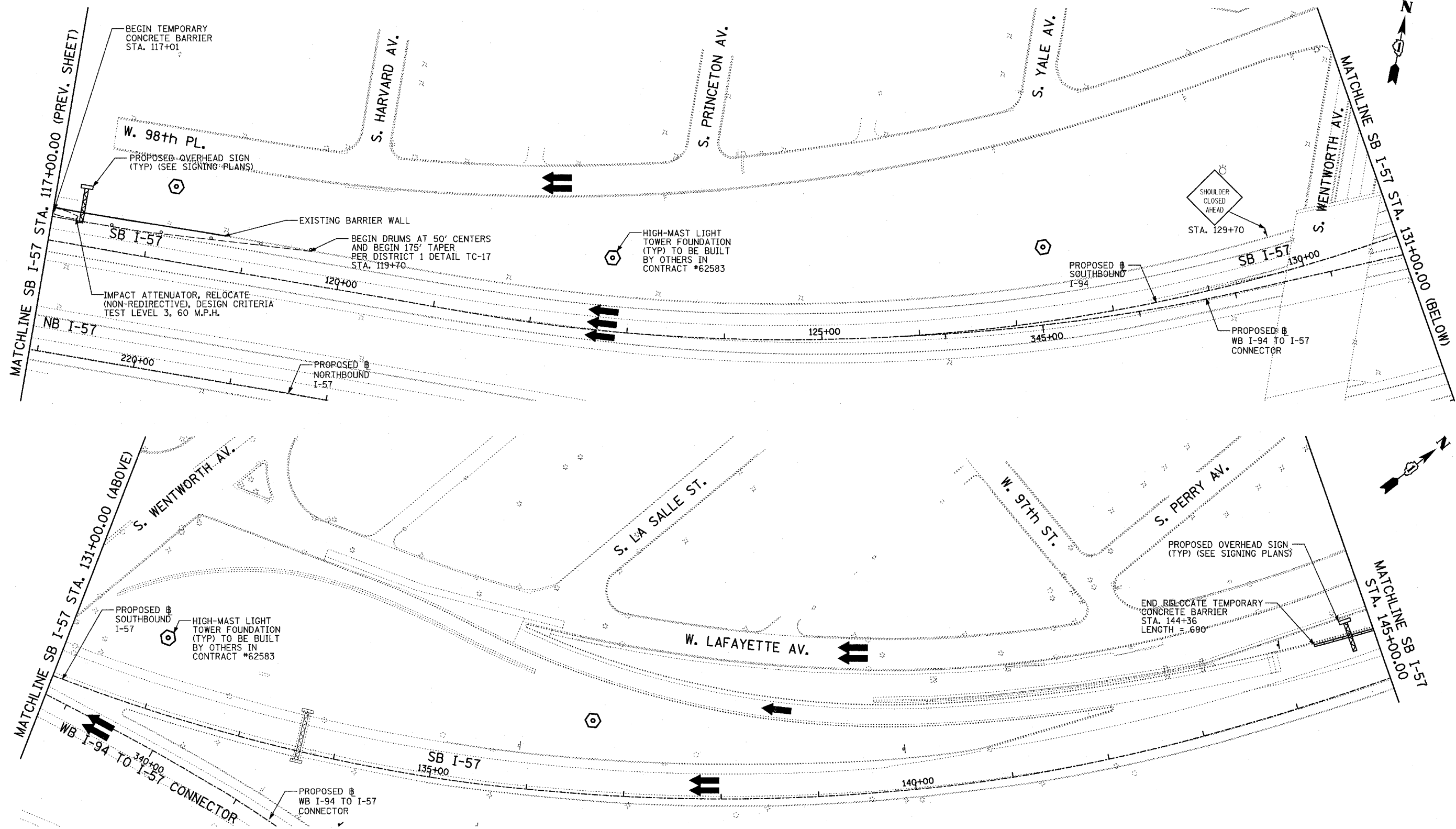


F.A.I. RTE.	SECTION	COUNTY	TOTAL SHEETS	SHEET NO.
94		COOK	905	150
STA. 1200+00.00		TO STA. 1365+00		
FED. ROAD DIST. NO.		ILLINOIS FED. AID PROJECT		
(1516.1, 1717 & 1818) R-9		62695		



LEGEND:

	TEMPORARY CONCRETE BARRIER		DRUM WITH MONO-DIRECTIONAL STEADY BURNING LIGHT
	TRAFFIC LANE		ARROW BOARD
	WORK ZONE		
	BARRICADE, TYPE III		

REVISIONS	
NAME	DATE

ILLINOIS DEPARTMENT OF TRANSPORTATION
 F.A.I. 94 (DAN RYAN EXPRESSWAY)
 MAINTENANCE OF TRAFFIC PLAN
 SB I-94 - STAGE 2
 SB I-57 STA. 117+00 TO 145+00
 SHEET 2 OF 9

SCALE: 1"=50'-0"
 DATE: MARCH 25, 2005
 DRAWN BY: JPA, RTM
 CHECKED BY: MAG, JPM

TYLIN INTERNATIONAL