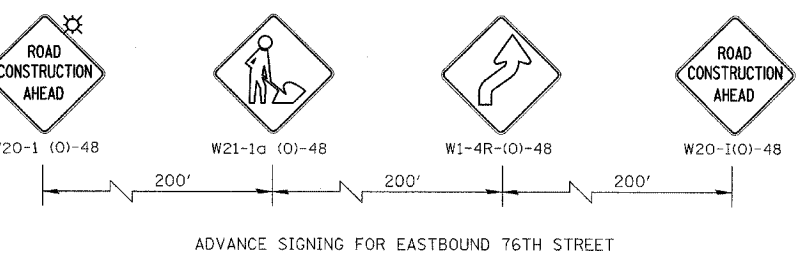
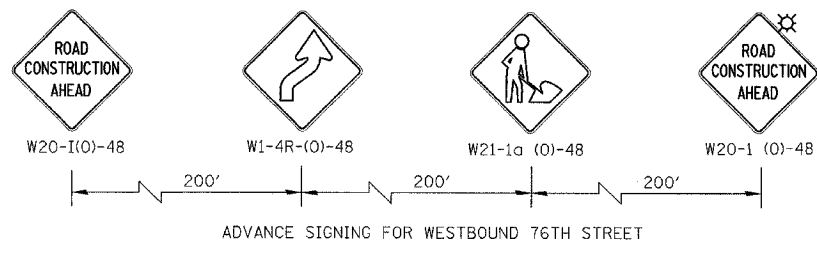
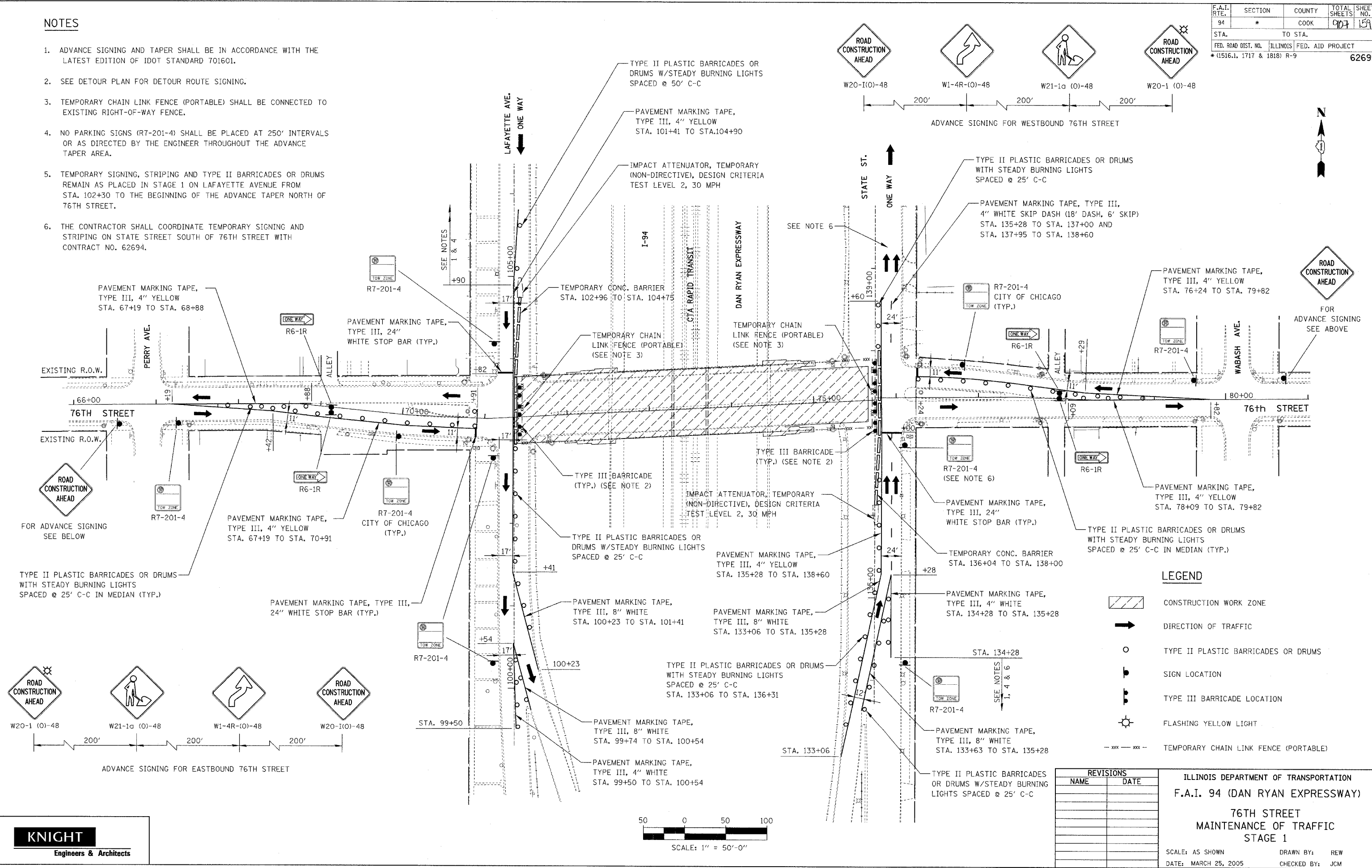


F.A.I. RTE.	SECTION	COUNTY	TOTAL SHEETS	SHEET NO.
94	*	COOK	017	159
STA.	TO STA.			
FED. ROAD DIST. NO.	ILLINOIS	FED. AID PROJECT		
*(1516.1, 1717 & 1818) R-9			62695	

NOTES

1. ADVANCE SIGNING AND TAPER SHALL BE IN ACCORDANCE WITH THE LATEST EDITION OF IDOT STANDARD 701601.
2. SEE DETOUR PLAN FOR DETOUR ROUTE SIGNING.
3. TEMPORARY CHAIN LINK FENCE (PORTABLE) SHALL BE CONNECTED TO EXISTING RIGHT-OF-WAY FENCE.
4. NO PARKING SIGNS (R7-201-4) SHALL BE PLACED AT 250' INTERVALS OR AS DIRECTED BY THE ENGINEER THROUGHOUT THE ADVANCE TAPER AREA.
5. TEMPORARY SIGNING, STRIPING AND TYPE II BARRICADES OR DRUMS REMAIN AS PLACED IN STAGE 1 ON LAFAYETTE AVENUE FROM STA. 102+30 TO THE BEGINNING OF THE ADVANCE TAPER NORTH OF 76TH STREET.
6. THE CONTRACTOR SHALL COORDINATE TEMPORARY SIGNING AND STRIPING ON STATE STREET SOUTH OF 76TH STREET WITH CONTRACT NO. 62694.



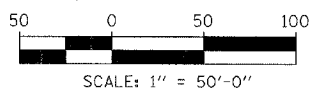
LEGEND

- CONSTRUCTION WORK ZONE
- DIRECTION OF TRAFFIC
- TYPE II PLASTIC BARRICADES OR DRUMS
- SIGN LOCATION
- TYPE III BARRICADE LOCATION
- FLASHING YELLOW LIGHT
- TEMPORARY CHAIN LINK FENCE (PORTABLE)

REVISIONS

NAME	DATE

ILLINOIS DEPARTMENT OF TRANSPORTATION
 F.A.I. 94 (DAN RYAN EXPRESSWAY)
 76TH STREET
 MAINTENANCE OF TRAFFIC
 STAGE 1
 SCALE: AS SHOWN DRAWN BY: REW
 DATE: MARCH 25, 2005 CHECKED BY: JCM



KNIGHT
 Engineers & Architects

FILE: I:\16992\02\Cad\UShighways\roadway\MO71\659202MOT01.dwg