

F.A.I. RTE.	SECTION	COUNTY	TOTAL SHEETS	SHEET NO.
94		COOK	907	165
STA. 1200+00.00		TO STA. 1365+00		
FED. ROAD DIST. NO.	ILLINOIS	FED. AID PROJECT		
• (1516.1, 1717 & 1818) R-9		62695		

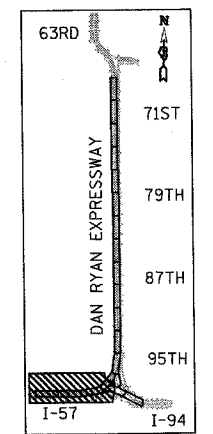


SIGNING LEGEND:

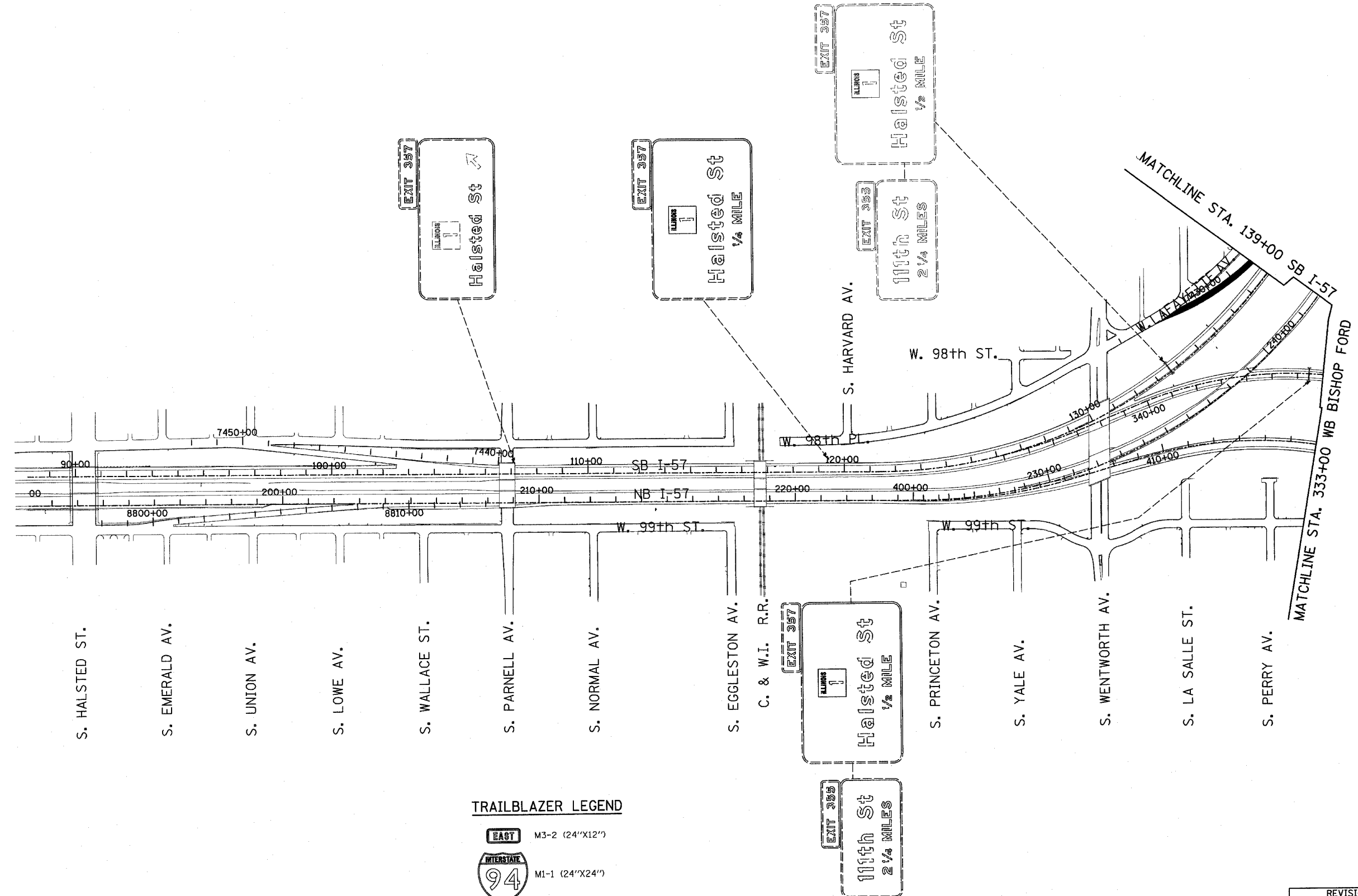
- EXISTING GROUND MOUNTED SIGN
- EXISTING OVERHEAD TRUSS MOUNTED SIGN
- EXISTING OVERHEAD CANTILEVER MOUNTED SIGN
- PROPOSED GROUND MOUNTED SIGN
- PROPOSED OVERHEAD SIGN STRUCTURE - TRUSS
- PROPOSED OVERHEAD SIGN STRUCTURE - BRIDGE MOUNTED
- PROPOSED OVERHEAD SIGN STRUCTURE - CANTILEVER
- CONSTRUCTION ZONE-RAMP CLOSED
- CONSTRUCTION ZONE
- TEMPORARY TRAILBLAZER
- EXISTING SIGN
- EXISTING SIGN TO BE REMOVED
- PROPOSED SIGN

TRAILBLAZER LEGEND

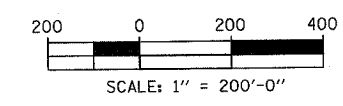
- M3-2 (24"X12")
- M1-1 (24"X24")
- M6-3 (21"X15")
- M4-8 (24"X12")



LOCATION MAP



TYLIN INTERNATIONAL



REVISIONS	
NAME	DATE

ILLINOIS DEPARTMENT OF TRANSPORTATION
F.A.I. 94 (DAN RYAN EXPRESSWAY)
CONSTRUCTION SIGNING-STAGE 1
STA. 100+00 TO STA 139+00
SHEET 1 OF 6

SCALE: 1" = 200'
DATE: MARCH 25, 2005
DRAWN BY: AMB
CHECKED BY: TGB

5/30/2005 12:42:43 PM