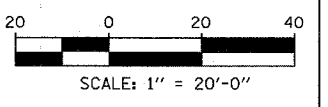
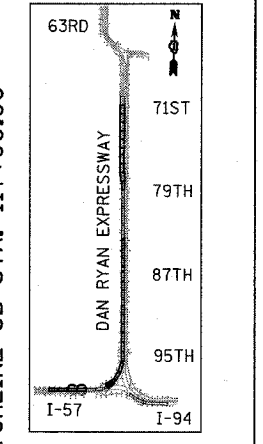
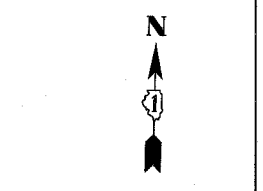
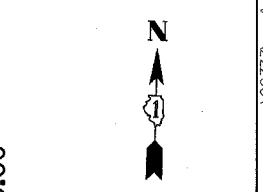
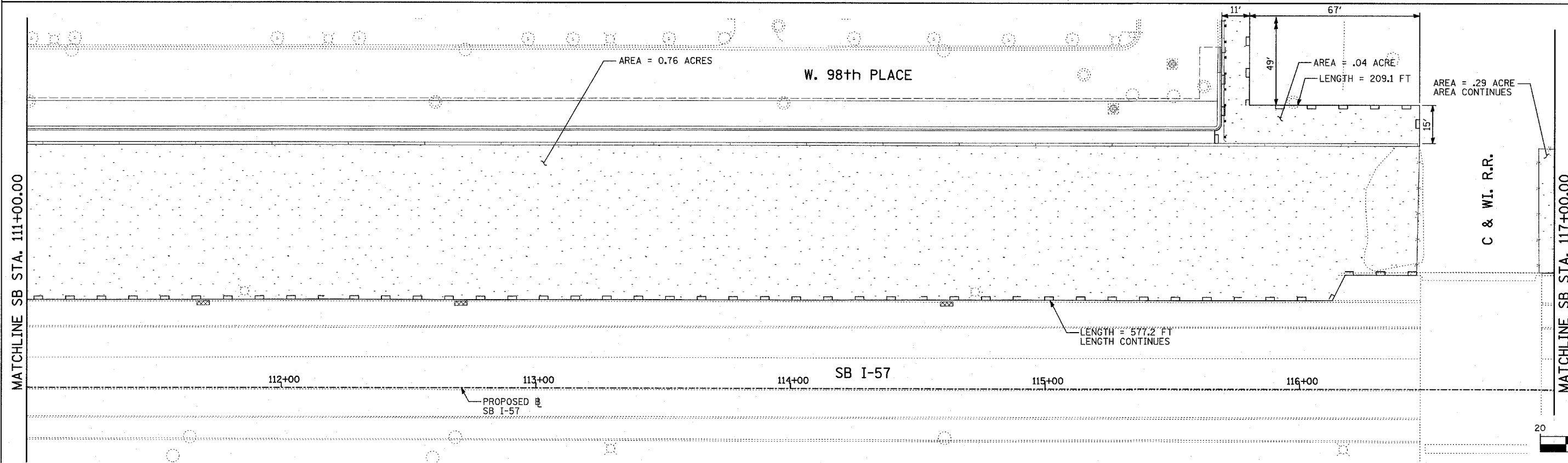
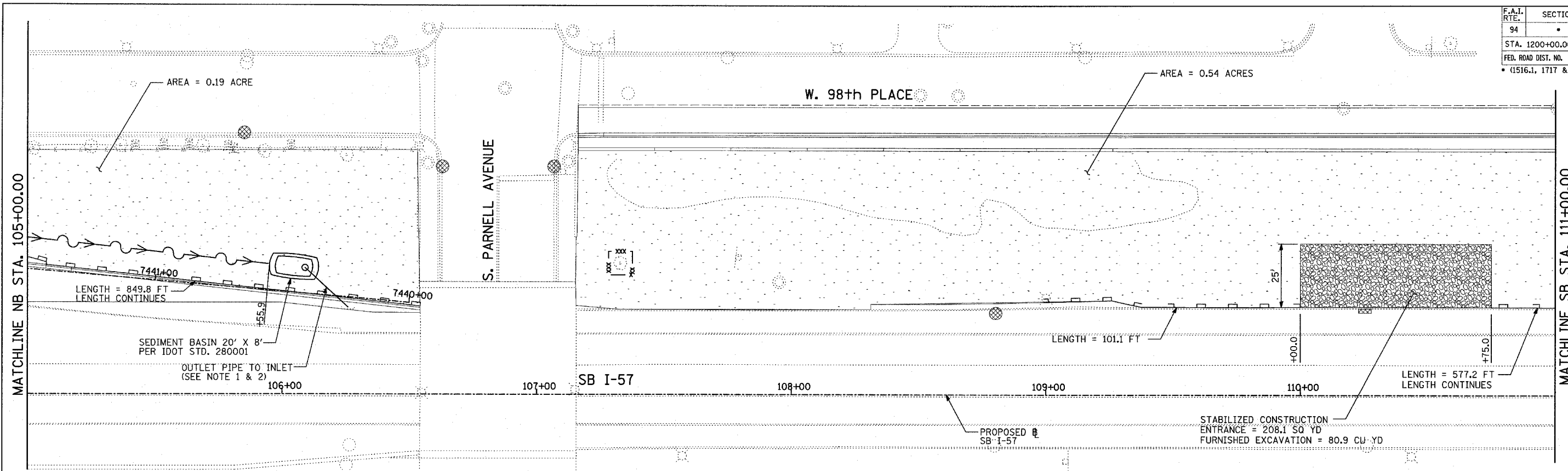


|                                 |          |                  |              |           |
|---------------------------------|----------|------------------|--------------|-----------|
| F.A.I. RTE.                     | SECTION  | COUNTY           | TOTAL SHEETS | SHEET NO. |
| 94                              |          | COOK             | 907          | 178       |
| STA. 1200+00.00 TO STA. 1365+00 |          |                  |              |           |
| FED. ROAD DIST. NO.             | ILLINOIS | FED. AID PROJECT |              |           |
| * (1516.1, 1717 & 1818) R-9     |          | 62695            |              |           |



**NOTES:**

- UPON COMPLETION OF PROPOSED DRAINAGE SYSTEM, CONNECT OUTLET TO PROPOSED DRAINAGE STRUCTURE #31 (SEE DRAINAGE AND UTILITY PLAN).
- DURING CONSTRUCTION OF DRAINAGE SYSTEM, ALL OVERFLOW MUST BE FILTERED PER IDOT STD. 280001.

**TYLIN** INTERNATIONAL

**LEGEND:**

- TEMPORARY EROSION CONTROL SEEDING
- PERIMETER EROSION BARRIER
- INLET FILTER, TO BE INSTALLED IN OFF PROJECT DRAINAGE STRUCTURES ACCEPTING STORMWATER RUNOFF
- TEMPORARY FENCE
- TEMPORARY DITCH
- TEMPORARY DITCH CHECK
- TEMPORARY FENCE FOR TREE PROTECTION (15 FEET PER SIDE = 60 FEET TOTAL)

| REVISIONS |      |
|-----------|------|
| NAME      | DATE |
|           |      |
|           |      |
|           |      |
|           |      |
|           |      |
|           |      |
|           |      |
|           |      |
|           |      |
|           |      |

ILLINOIS DEPARTMENT OF TRANSPORTATION  
 F.A.I. 94 (DAN RYAN EXPRESSWAY)  
 EROSION CONTROL PLAN  
 SB HALSTED STREET EXIT RAMP  
 SB I-57 STA. 105+00.00 TO 117+00.00  
 SHEET 2 OF 27

SCALE: 1"=20'  
 DATE: MARCH 25, 2005

DRAWN BY: JPA, AH  
 CHECKED BY: JPM, MAG

03/20/2005 04:39 PM