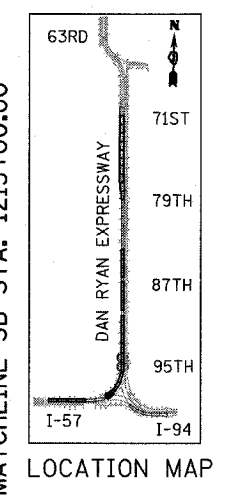
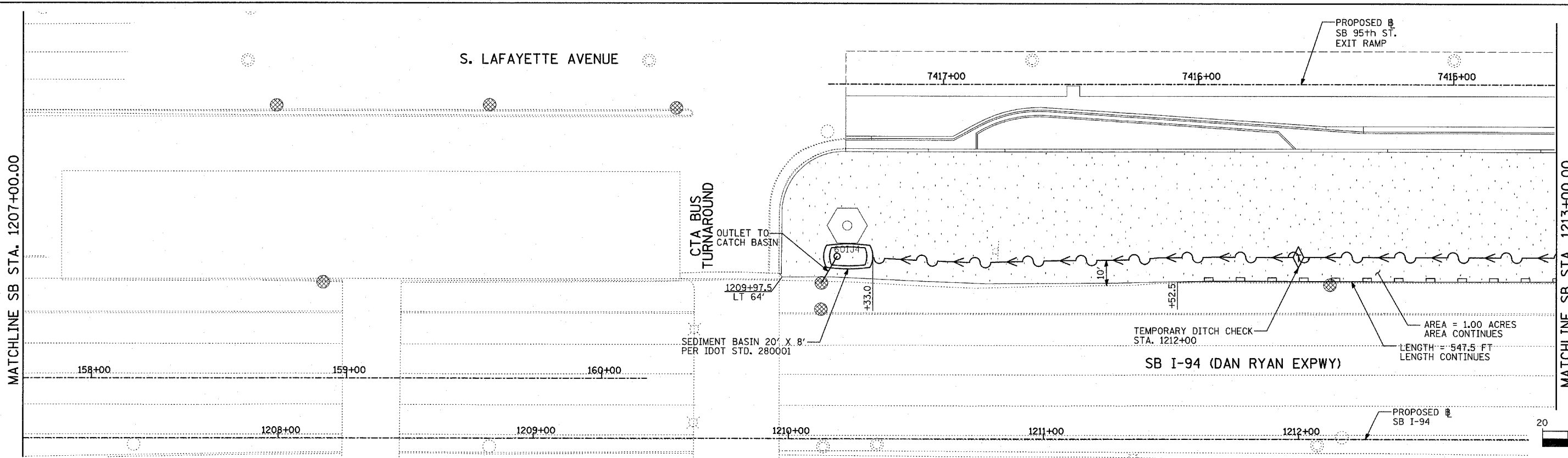
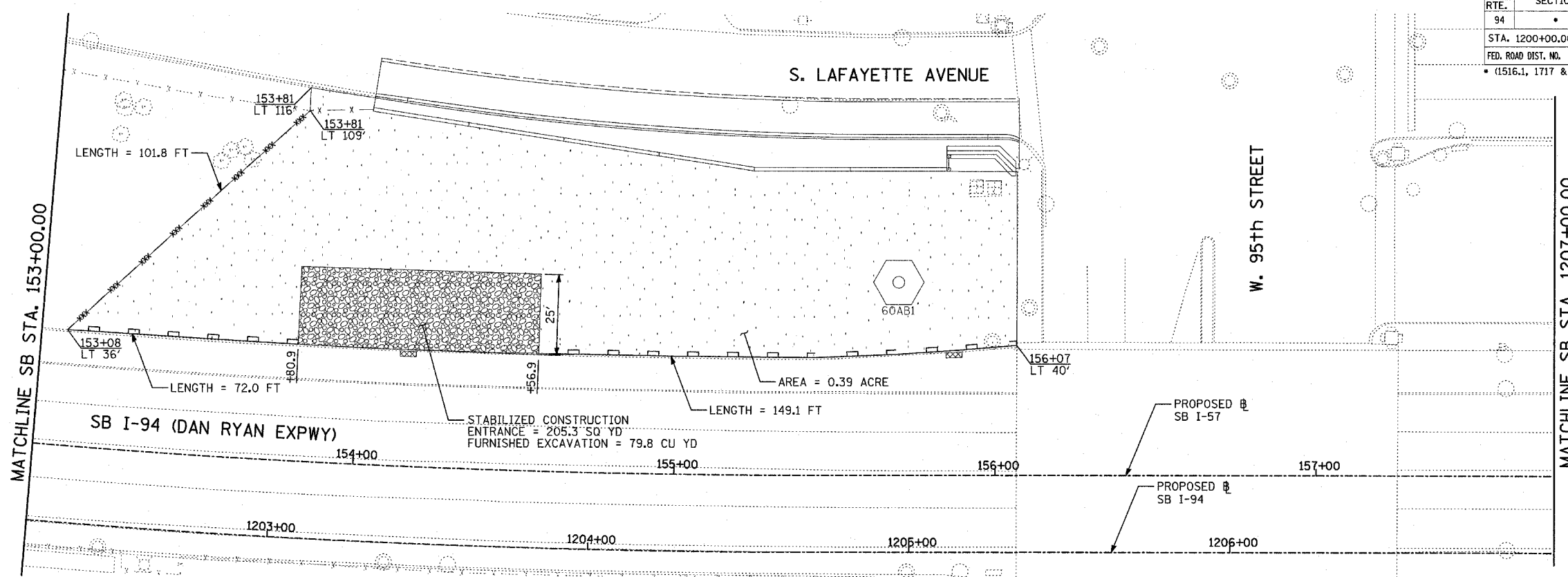


F.A.I. RTE.	SECTION	COUNTY	TOTAL SHEETS	SHEET NO.
94		COOK	907	184
STA. 1200+00.00 TO STA. 1365+00				
FED. ROAD DIST. NO.	ILLINOIS	FED. AID PROJECT		
• (1516.1, 1717 & 1818) R-9		62695		



MATCHLINE SB STA. 1207+00.00

MATCHLINE SB STA. 1213+00.00

**TYLIN** INTERNATIONAL

- LEGEND:**
- TEMPORARY EROSION CONTROL SEEDING
  - PERIMETER EROSION BARRIER
  - INLET FILTER, TO BE INSTALLED IN OFF PROJECT DRAINAGE STRUCTURES ACCEPTING STORMWATER RUNOFF
  - TEMPORARY FENCE
  - TEMPORARY DITCH
  - TEMPORARY DITCH CHECK
  - TEMPORARY FENCE FOR TREE PROTECTION (15 FEET PER SIDE = 60 FEET TOTAL)

REVISIONS	
NAME	DATE

ILLINOIS DEPARTMENT OF TRANSPORTATION  
**F.A.I. 94 (DAN RYAN EXPRESSWAY)**  
**EROSION CONTROL PLAN**  
**SB 95th STREET EXIT RAMP**  
**SB I-94 STA. 1201+00.00 TO 1213+00.00**  
**SHEET 8 OF 27**

SCALE: 1"=20'  
DATE: MARCH 25, 2005

DRAWN BY: JPA, AH  
CHECKED BY: JPM, MAG

P:\02313\road\eroc\plan\eroc1207-1213.dwg

03/30/2005 01:46:49 P.M.